



Chipsmall Limited consists of a professional team with an average of over 10 year of expertise in the distribution of electronic components. Based in Hongkong, we have already established firm and mutual-benefit business relationships with customers from,Europe,America and south Asia,supplying obsolete and hard-to-find components to meet their specific needs.

With the principle of “Quality Parts,Customers Priority,Honest Operation,and Considerate Service”,our business mainly focus on the distribution of electronic components. Line cards we deal with include Microchip,ALPS,ROHM,Xilinx,Pulse,ON,Everlight and Freescale. Main products comprise IC,Modules,Potentiometer,IC Socket,Relay,Connector.Our parts cover such applications as commercial,industrial, and automotives areas.

We are looking forward to setting up business relationship with you and hope to provide you with the best service and solution. Let us make a better world for our industry!



Contact us

Tel: +86-755-8981 8866 Fax: +86-755-8427 6832

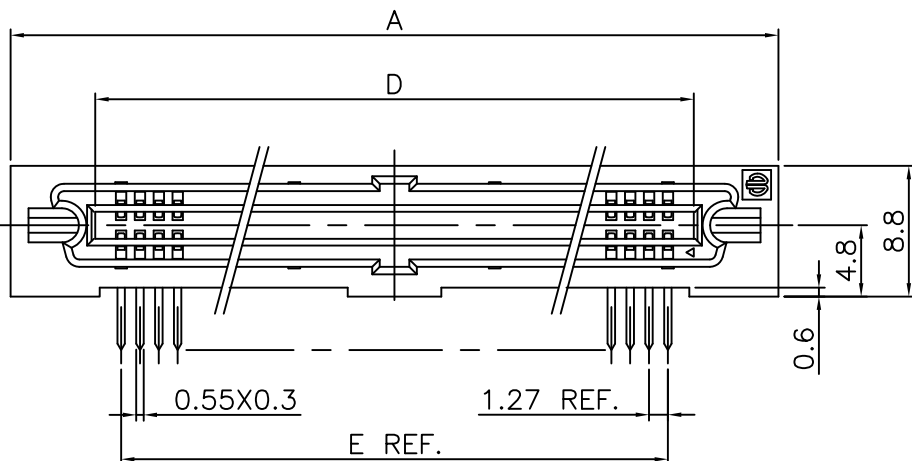
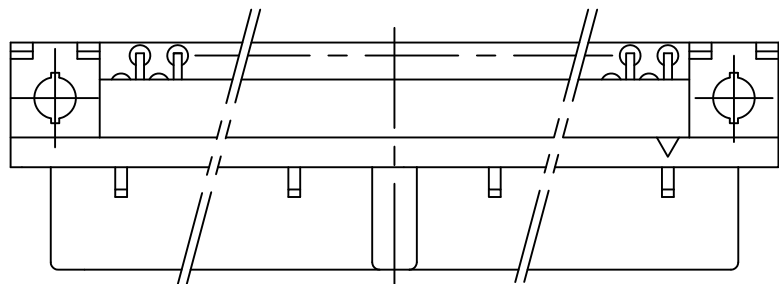
Email & Skype: info@chipsmall.com Web: www.chipsmall.com

Address: A1208, Overseas Decoration Building, #122 Zhenhua RD., Futian, Shenzhen, China

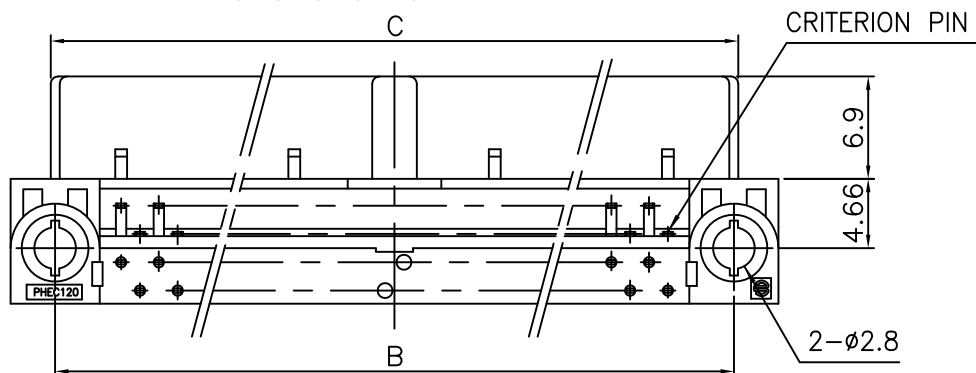


PRODUCT NO.

JSC 96359



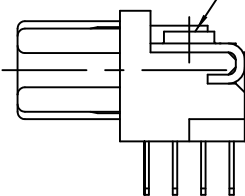
NO. OF CONTACTS:40,60,68,80,100,120



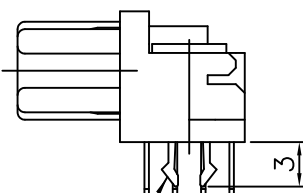
NOTES

- 1.BODY, LOCATOR MATERIAL : PBT GLASS FILLED (UL94V-0), COLOR BLACK
- 2.TERMINAL MATERIAL : PHOSPHOR BRONZE
- 3.MOUNTING LATCH MATERIAL : PHOSPHOR BRONZE
- 4.SCREW NUT : STEEL
- 5.TERMINAL FINISH
CONTACT AREA : GOLD FLASH 0.1μm min. OVER NICKEL UNDERLAYER
SOLDER TAILS : PURE Sn 2μm min. OVER NICKEL UNDERLAYER
- 6.MOUNTING LATCH FINISH : PURE Sn 2μm min. OVER NICKEL UNDERLAYER
- 7.SCREW NUT FINISH : NICKEL
- 8.THIS PRODUCT MEETS EUROPEAN UNION DIRECTIVES AND OTHER COUNTRY REGULATIONS AS DESCRIBED IN GS-22-008
- 9.THE HOUSING WILL WITHSTAND EXPOSURE TO 260 DEGREE PEAK TEMPERATURE FOR 10 SECONDS IN A WAVE SOLDER APPLICATION WITH A 1.6mm MINIMUM THICK CIRCUIT BOARD.

SCREW NUT
M2.6

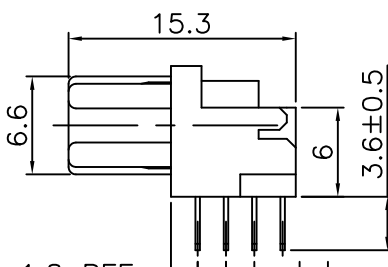


PHEC___R-R112 Obsolete



MOUNTING LATCH

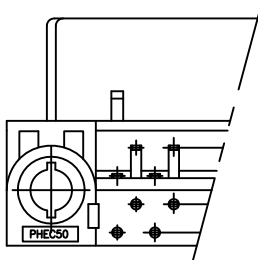
PHEC___R-R111



1.8 REF.
1.905 REF.
1.905 REF.

PHEC___R-R110

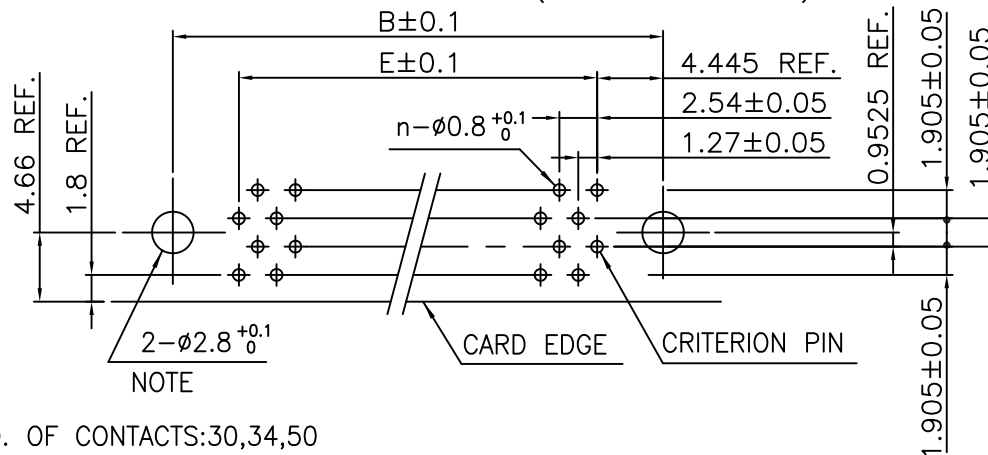
NO. OF CONTACTS:30,34,50



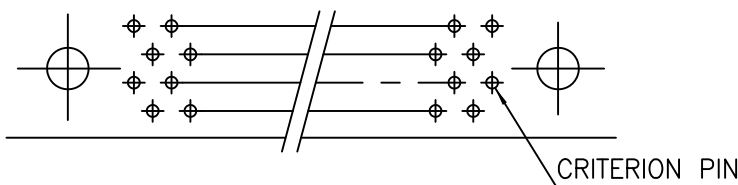
RECOMMENDED PC BOARD

THICKNESS:1.6 ±0.2
HOLE PATTERN (COMPONENT SIDE)

NO. OF CONTACTS:40,60,68,80,100,120 (n:NO. OF CONTACTS)



NO. OF CONTACTS:30,34,50



NOTE : THROUGH-HOLES FOR MOUNTING LATCHES ALSO SHOULD BE PLATED.

CAT. NO.	NO. OF CONTACTS (MATING SIDE)	DIMENSIONS				
		A	B	C	D	E
PHEC30R-R11_LF	15/ROW X 2 ROWS	32.67	26.67	27.26	21.26	17.78
PHEC34R-R11_LF	17/ROW X 2 ROWS	35.21	29.21	29.80	23.80	20.32
PHEC40R-R11_LF	20/ROW X 2 ROWS	39.02	33.02	33.61	27.61	24.13
PHEC50R-R11_LF	25/ROW X 2 ROWS	45.37	39.37	39.96	33.96	30.48
PHEC60R-R11_LF	30/ROW X 2 ROWS	51.72	45.72	46.31	40.31	36.83
PHEC68R-R11_LF	34/ROW X 2 ROWS	56.80	50.80	51.39	45.39	41.91
PHEC80R-R11_LF	40/ROW X 2 ROWS	64.42	58.42	59.01	53.01	49.53
PHEC100R-R11_LF	50/ROW X 2 ROWS	77.12	71.12	71.71	65.71	62.23
PHEC120R-R11_LF	60/ROW X 2 ROWS	89.82	83.82	84.41	78.41	74.93

mat'l. code					surface			tolerance		projection		product family					CODE	
---					ISO 1302			ISO 406 ISO 1101				PHEC					JP	
ltr	description	ecn no	dr	date	tolerances unless otherwise specified							title						
A	RELEASED	J05-0186	S.O	3/29/'05	angles	linear	0.X		±0.3			PRINTED CIRCUIT CONNECTOR						
B	REVISED	J07-0047	S.O	1/25/'07			0.XX		±0.3			(CAT.NO.PHEC _ _ _ R-R11_LF)						
C	REVISED	J07-0458	S.O	9/11/'07			0.XXX		±0.3			scale N/A						
D	EOL of R112LF	ELX-J-17067	S.W	2/27/'14	dr	S.Watanabe		2/27/'14			dwg no					sheet 1 of 1		size
					enr	S.Watanabe		2/27/'14			JSC 96359					A3		
					chr	K.Ito		2/27/'14										
					appd	Y.Kameda		2/27/'14			type					Customer Drawing		
sheet index	revision	D															Rev.	
	sheet	1															D	