



Chipsmall Limited consists of a professional team with an average of over 10 year of expertise in the distribution of electronic components. Based in Hongkong, we have already established firm and mutual-benefit business relationships with customers from,Europe,America and south Asia,supplying obsolete and hard-to-find components to meet their specific needs.

With the principle of “Quality Parts,Customers Priority,Honest Operation,and Considerate Service”,our business mainly focus on the distribution of electronic components. Line cards we deal with include Microchip,ALPS,ROHM,Xilinx,Pulse,ON,Everlight and Freescale. Main products comprise IC,Modules,Potentiometer,IC Socket,Relay,Connector.Our parts cover such applications as commercial,industrial, and automotives areas.

We are looking forward to setting up business relationship with you and hope to provide you with the best service and solution. Let us make a better world for our industry!



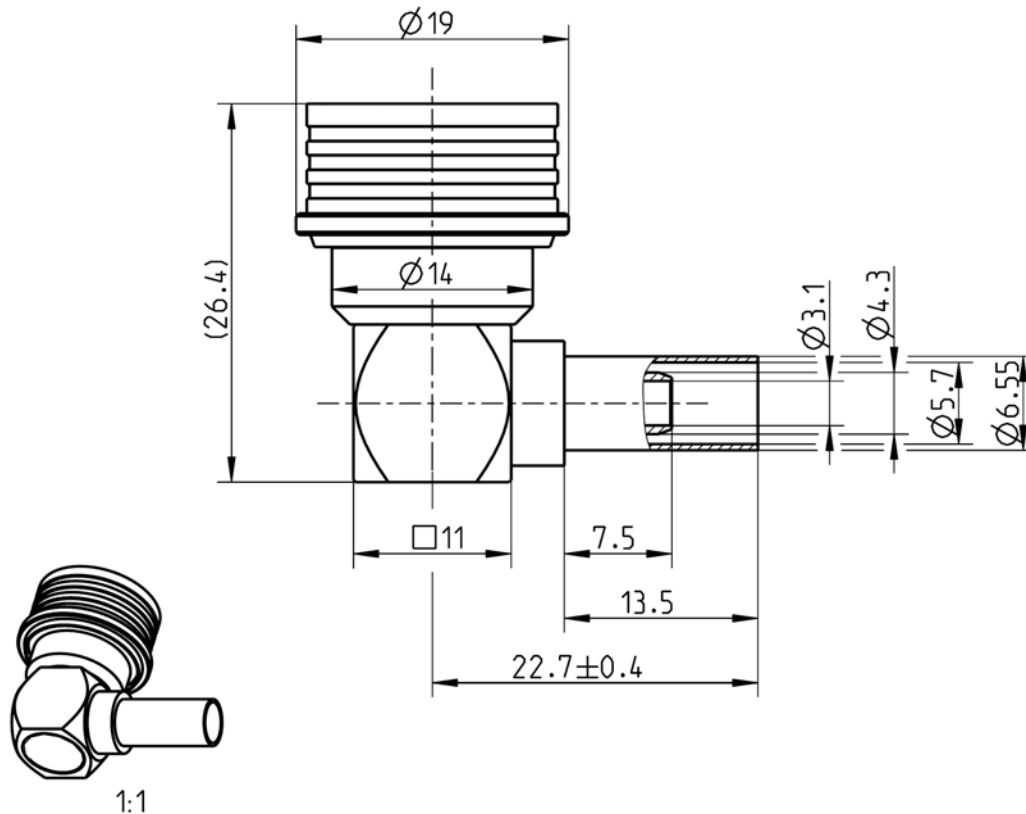
## Contact us

Tel: +86-755-8981 8866 Fax: +86-755-8427 6832

Email & Skype: [info@chipsmall.com](mailto:info@chipsmall.com) Web: [www.chipsmall.com](http://www.chipsmall.com)

Address: A1208, Overseas Decoration Building, #122 Zhenhua RD., Futian, Shenzhen, China





All dimensions are in mm; tolerances according to ISO 2768 m-H

#### Interface

According to 153QS000-000, DCA-00067913

#### Documents

Assembly instruction 53 S1

#### Material and plating

##### Connector parts

Center contact  
Outer contact  
Contact spring  
Body  
Dielectric  
Unlocking sleeve  
Crimping ferrule

##### Material

Brass  
Brass  
Beryllium copper  
Brass  
PTFE  
Brass  
Copper

##### Plating

AuroDur®, gold plated  
Flash white bronze over silver(e.g. Optargen®)  
AuroDur®, gold plated  
Flash white bronze over silver(e.g. Optargen®)  
White bronze(e.g. Optalloy®)  
Flash white bronze over silver(e.g. Optargen®)

**Electrical data**

Impedance	50 $\Omega$
Frequency	DC to 11 GHz
Return loss	$\geq 32$ dB, DC to 2.5 GHz $\geq 23$ dB, 2.5 to 4 GHz $\geq 20$ dB, 4 to 6 GHz
Insertion loss	$\leq 0.05$ dB $\times \sqrt{f}$ [GHz]
Insulation resistance	$\geq 5 \times 10^3$ M $\Omega$
Center contact resistance	$\leq 1.5$ m $\Omega$
Outer contact resistance	$\leq 1.5$ m $\Omega$
Test voltage	2500 V rms
Working voltage	1000 V rms
RF-leakage	$\leq -90$ dB @ 3 GHz

- Limitations are possible due to the used cable type -

**Mechanical data**

Mating cycles	min. 100
Center contact captivation: axial	$\geq 28$ N
radial	$\geq 1$ Ncm
Engagement force	30 N (typ.)
Disengagement force	30 N (typ.)

**Environmental data**

Temperature range	-40°C to +125°C
Thermal shock	MIL-STD-202, Meth. 107 D, Cond. B
Corrosion	MIL-STD-202, Meth. 101 D, Cond. B
Vibration	MIL-STD-202, Meth. 204 D, Cond. A
Shock	MIL-STD-202, Meth. 213, Cond. I
Moisture resistance	MIL-STD-202, Meth. 106
Degree of protection (mated pair)	IEC 60529, IP68 0.3 bar (interface only)
RoHS	compliant

**Tooling**

Crimping tool	11W150-000
Crimp insert	11W150-108

**Suitable cables**

RG 223 / RG 142 / RG 400

**Weight**

Weight	26 g/pce
--------	----------

While the information has been carefully compiled to the best of our knowledge, nothing is intended as representation or warranty on our part and no statement herein shall be construed as recommendation to infringe existing patents. In the effort to improve our products, we reserve the right to make changes judged to be necessary.

Draft	Date	Approved	Date	Rev.	Engineering change number	Name	Date
A. Fellner	20/1/06	Sa. Krautenbacher	11.03.14	b00	14-0352	T. Krojer	11.03.14

Rosenberger Hochfrequenztechnik GmbH & Co. KG  
P.O.Box 1260 D-84526 Tittmoning Germany  
[www.rosenberger.de](http://www.rosenberger.de)

Tel.: +49 8684 18-0  
Fax: +49 8684 18-499  
email: [info@rosenberger.de](mailto:info@rosenberger.de)

Page  
2 / 2