



Chipsmall Limited consists of a professional team with an average of over 10 year of expertise in the distribution of electronic components. Based in Hongkong, we have already established firm and mutual-benefit business relationships with customers from,Europe,America and south Asia,supplying obsolete and hard-to-find components to meet their specific needs.

With the principle of “Quality Parts,Customers Priority,Honest Operation,and Considerate Service”,our business mainly focus on the distribution of electronic components. Line cards we deal with include Microchip,ALPS,ROHM,Xilinx,Pulse,ON,Everlight and Freescale. Main products comprise IC,Modules,Potentiometer,IC Socket,Relay,Connector.Our parts cover such applications as commercial,industrial, and automotives areas.

We are looking forward to setting up business relationship with you and hope to provide you with the best service and solution. Let us make a better world for our industry!



Contact us

Tel: +86-755-8981 8866 Fax: +86-755-8427 6832

Email & Skype: info@chipsmall.com Web: www.chipsmall.com

Address: A1208, Overseas Decoration Building, #122 Zhenhua RD., Futian, Shenzhen, China



LOC	DIST	REVISIONS					
		P	LTR	DESCRIPTION	DATE	DWN	APVD
CE	16		A	RELEASED	23FEB07	JWD	DLF

D

C

B

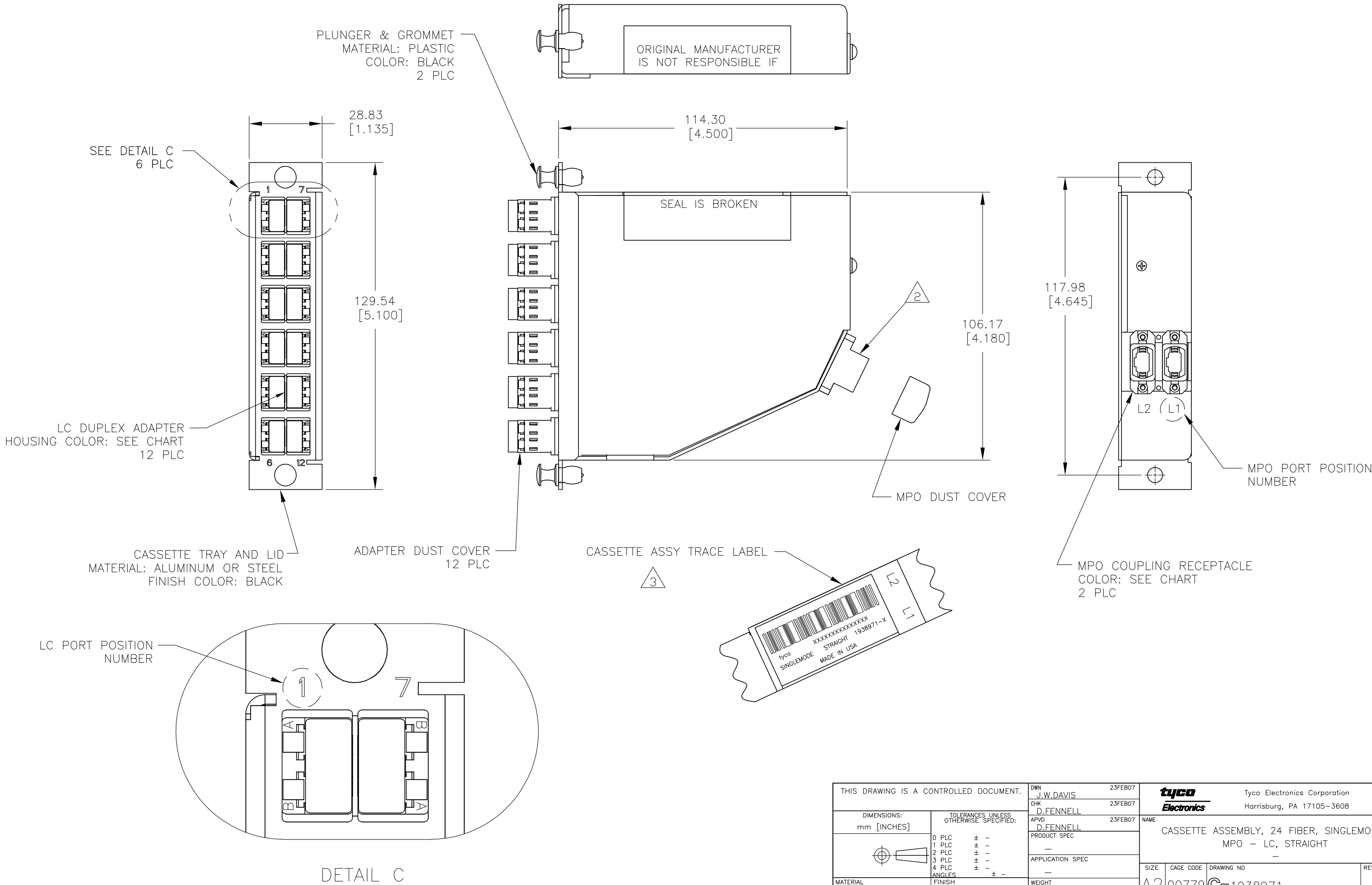
A

D

C

B

A



THIS DRAWING IS A CONTROLLED DOCUMENT.		DWN J.W.DAVIS	23FEB07	tyco Electronics Tyco Electronics Corporation Harrisburg, PA 17105-3608						
DIMENSIONS: mm [INCHES]		CHK D.FENNELL	23FEB07							
	TOLERANCES UNLESS OTHERWISE SPECIFIED:		APVD D.FENNELL	23FEB07	NAME CASSETTE ASSEMBLY, 24 FIBER, SINGLEMODE MPO - LC, STRAIGHT					
			PRODUCT SPEC —							
			APPLICATION SPEC —		SIZE		CAGE CODE	DRAWING NO	RESTRICTED TO	
	MATERIAL —	FINISH —	WEIGHT —		A2	00779	C=1938971		—	
CUSTOMER DRAWING					SCALE	NTS	SHEET	1 of 2	REV	A

LOC	DIST	REVISIONS					
CE	16	P	LTR	DESCRIPTION	DATE	DWN	APVD
			—	SEE SHEET 1	—	—	—

1. MAXIMUM CASSETTE ASSEMBLY LOSS: 1.25dB.

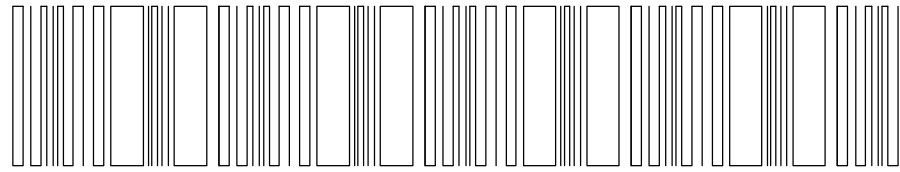
2 WHITE MARKING ON MPO TO BE FACING TOWARD TOP OF CONNECTOR MODULE.
WHITE MARK INDICATES FIBER 1 SIDE

3 SEE TRACE LABEL DETAIL

4. A COPY OF CASSETTE ASSEMBLY LOSS TEST DATA WILL BE PLACED INSIDE OR WITH THE UNIT PACKAGE.
CASSETTES WILL BE TESTED AT 1310nm & 1550nm WAVELENGTH.

5. PRODUCT AND PROCESSING MUST MEET REQUIREMENTS OF TYCO ELECTRONICS STANDARD 230—702

3



tycoXXXXXXXXXXXXX
SINGLEMODE STRAIGHT 1938971—X
MADE IN USA

FIBER PATH — STRAIGHT

MPO L1 PORT POSITION NO	MPO L2 PORT POSITION NO	LC PORT POSITION NO
1	—	1B
2	—	1A
3	—	2B
4	—	2A
5	—	3B
6	—	3A
7	—	4B
8	—	4A
9	—	5B
10	—	5A
11	—	6B
12	—	6A
—	1	7B
—	2	7A
—	3	8B
—	4	8A
—	5	9B
—	6	9A
—	7	10B
—	8	10A
—	9	11B
—	10	11A
—	11	12B
—	12	12A

AQUA SECURE	AQUA SECURE	1—1938971—1
SLATE SECURE	SLATE SECURE	1—1938971—0
ROSE SECURE	ROSE SECURE	1938971—9
VIOLET SECURE	VIOLET SECURE	1938971—8
BROWN SECURE	BROWN SECURE	1938971—7
ORANGE SECURE	ORANGE SECURE	1938971—6
YELLOW SECURE	YELLOW SECURE	1938971—5
BLUE SECURE	BLUE SECURE	1938971—4
GREEN SECURE	GREEN SECURE	1938971—3
RED SECURE	RED SECURE	1938971—2
BLACK STANDARD	BLUE STANDARD	1938971—1
MPO COUPLING BUSHING COLOR & TYPE	LC ADAPTER COLOR & TYPE	PART NUMBER

THIS DRAWING IS A CONTROLLED DOCUMENT.		DWN J.W.DAVIS 23FEB07		tyco Electronics Tyco Electronics Corporation Harrisburg, PA 17105-3608							
		CHK D.FENNELL 23FEB07									
DIMENSIONS: mm [INCHES]		TOLERANCES UNLESS OTHERWISE SPECIFIED:		NAME							
		APVD D.FENNELL 23FEB07		CASSETTE ASSEMBLY, 24 FIBER, SINGLEMODE							
		PRODUCT SPEC		MPO - LC, STRAIGHT							
		—		—							
		APPLICATION SPEC		—							
MATERIAL —		FINISH —		SIZE	CAGE CODE	DRAWING NO	RESTRICTED TO				
		WEIGHT —		A2	00779	C=1938971	—				
CUSTOMER DRAWING						SCALE	NTS	SHEET	2 of 2	REV	A