



Chipsmall Limited consists of a professional team with an average of over 10 year of expertise in the distribution of electronic components. Based in Hongkong, we have already established firm and mutual-benefit business relationships with customers from,Europe,America and south Asia,supplying obsolete and hard-to-find components to meet their specific needs.

With the principle of “Quality Parts,Customers Priority,Honest Operation,and Considerate Service”,our business mainly focus on the distribution of electronic components. Line cards we deal with include Microchip,ALPS,ROHM,Xilinx,Pulse,ON,Everlight and Freescale. Main products comprise IC,Modules,Potentiometer,IC Socket,Relay,Connector.Our parts cover such applications as commercial,industrial, and automotives areas.

We are looking forward to setting up business relationship with you and hope to provide you with the best service and solution. Let us make a better world for our industry!



Contact us

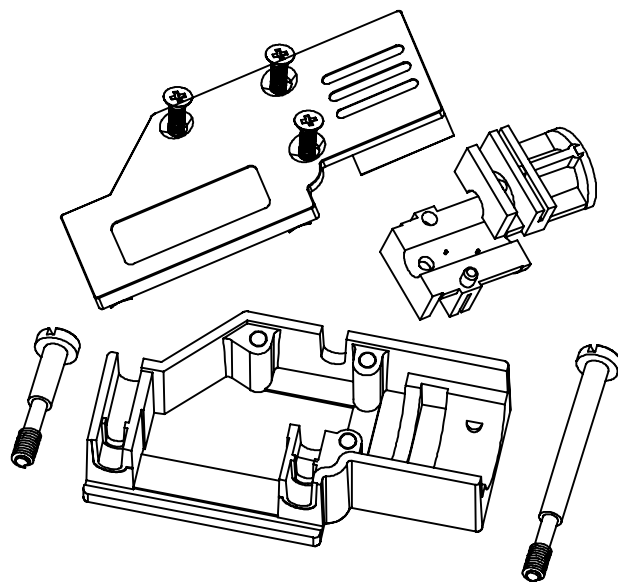
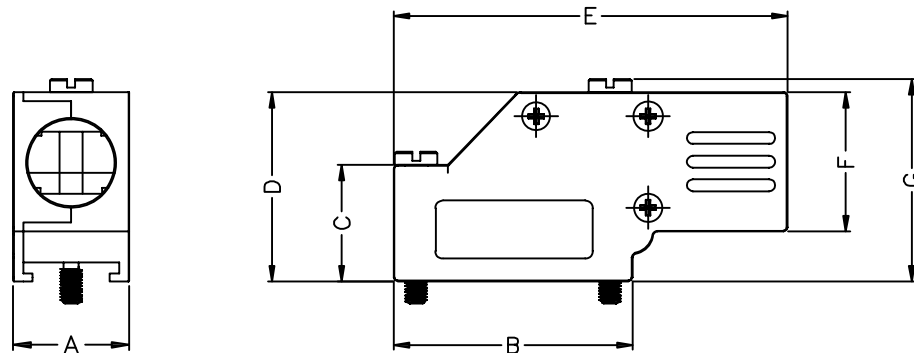
Tel: +86-755-8981 8866 Fax: +86-755-8427 6832

Email & Skype: info@chipsmall.com Web: www.chipsmall.com

Address: A1208, Overseas Decoration Building, #122 Zhenhua RD., Futian, Shenzhen, China



DESCRIPTION: D-SUB BACKSHELL - RIGHT ANGLE - 9 & 25 POSITION



DIMENSIONS(mm/in)							
SIZE	A ± 1.20 ± 0.047	B ± 1.20 ± 0.047	C ± 0.80 ± 0.031	D ± 0.80 ± 0.031	E ± 0.80 ± 0.031	F ± 0.80 ± 0.031	G ± 0.80 ± 0.031
9	15.0	30.8	15.0	24.4	50.8	18.0	26.2
	0.59	1.21	0.59	0.96	2.0	0.71	1.03
25	15.8	53.3	23.1	34.5	72.4	24.3	36.6
	0.62	2.10	0.91	1.36	2.85	0.96	1.44

BACKSHELL KIT INCLUDES:

(2) BACKSHELL HALVES

(3) HOUSING SCREWS

(1) 4-40 LONG THUMBSCREWS

(1) 4-40 SHORT THUMBSCREWS

(1) SET OF COMPRESSION INSERTS-VARIOUS SIZES

DIAMETERS 0.157"(<4mm), 0.167"(<5mm), 0.276"(<7mm), 0.354"(<9mm)

BACKSHELL MATERIAL: DIE CAST ZINC ALLOY, NICKEL PLATED

4-40 THUMBSCREWS: STEEL, ZINC PLATED

HOUSING SCREWS: STEEL, ZINC PLATED

COMPRESSION INSERT: ABS, UL RECOGNIZED

OPERATING TEMP: -40°C TO +120°C

DO NOT SCALE FROM DRAWING

RoHS COMPLIANT



THESE DRAWINGS AND SPECIFICATIONS ARE THE PROPERTY OF NorComp AND SHALL NOT BE REPRODUCED, COPIED OR USED AS THE BASIS FOR THE MANUFACTURE OF SALE OF APPARATUS WITHOUT WRITTEN PERMISSION.

NorComp

DRAWN:

B. BRIDGES

DATE:

02-14-18

CHECKED:

DATE:

SCALE:

NTS

SHEET

OF

1

1

REV

0

DWG NO.

962-YYY-030R121