



Chipsmall Limited consists of a professional team with an average of over 10 year of expertise in the distribution of electronic components. Based in Hongkong, we have already established firm and mutual-benefit business relationships with customers from,Europe,America and south Asia,supplying obsolete and hard-to-find components to meet their specific needs.

With the principle of "Quality Parts,Customers Priority,Honest Operation,and Considerate Service",our business mainly focus on the distribution of electronic components. Line cards we deal with include Microchip,ALPS,ROHM,Xilinx,Pulse,ON,Everlight and Freescale. Main products comprise IC,Modules,Potentiometer,IC Socket,Relay,Connector.Our parts cover such applications as commercial,industrial, and automotives areas.

We are looking forward to setting up business relationship with you and hope to provide you with the best service and solution. Let us make a better world for our industry!



Contact us

Tel: +86-755-8981 8866 Fax: +86-755-8427 6832

Email & Skype: info@chipsmall.com Web: www.chipsmall.com

Address: A1208, Overseas Decoration Building, #122 Zhenhua RD., Futian, Shenzhen, China

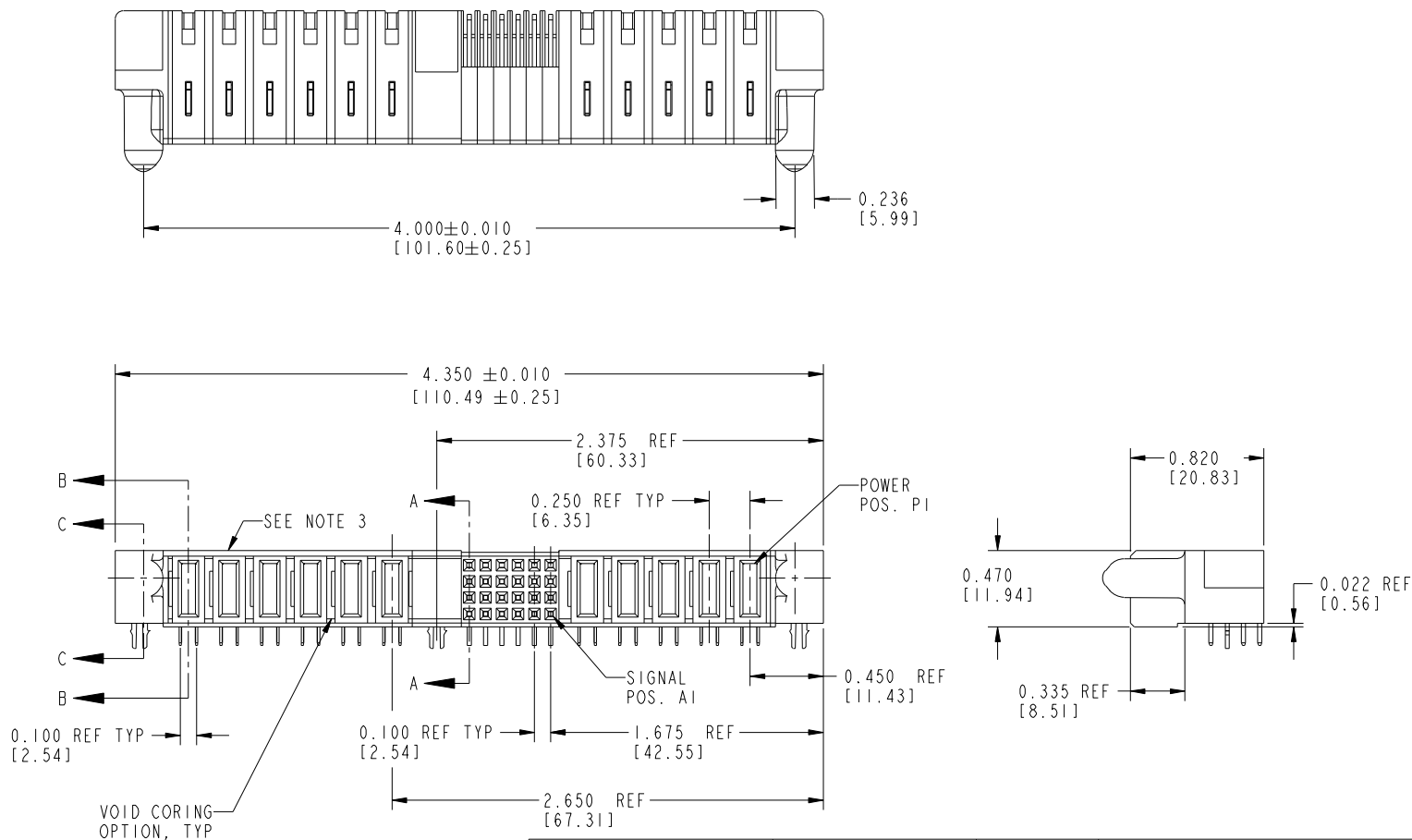




All rights strictly reserved. Reproduction or issue to third parties in any form whatever is not permitted without written authority from the proprietor. Property of FCI. Copyright FCI.

Tous droits strictement réservés. Reproduction ou communication à des tiers interdite sous quelque forme que ce soit sans autorisation écrite du propriétaire. Propriété de c FCI. Droits de reproduction FCI.

PRODUCT NUMBER
SEE SHEET 3



mat'l code				NOTE 1		tolerances unless otherwise specified		CUSTOMER		FCI	
litr	ecn no.	dr	date			.XX±.01/.X±.3		COPY		www.fciconnect.com	
N	DG05-0242	SJ	07/25/05	linear		.XXX±.005/.XX±.13		projection		title 5P + 24S + 1M + 6P	
P	DG05-0313	SJ	09/05/05			.XXXX±.0020/.XX±.051				R/A SOLDER RECEPT.	
R	DG05-0338	SW	09/19/05	angles		0° ± 2°				product family PwrBlade	
S	DG05-0550	GuoJM	12/16/05	dr	D. WOLFORD	01/21/99		INCH/MM		size	code
T	DG08-0239	JC	09/12/08	enrg	J. BROWN	01/21/99		scale		dwg no	213
				chr	J. BROWN	01/21/99		1:1	A	51625	sheet
				appd	J. BROWN	01/21/99					1 of 4
sheet index	revision sheet	T	T	T	T						
		1	2	3	4						

Pro/E

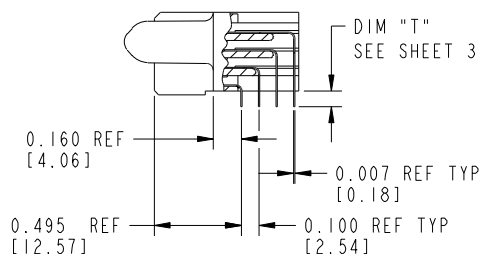
cage code 22526

Tous droits strictement réservés. Reproduction ou communication à des tiers interdite sous quelque forme que ce soit sans autorisation écrite du propriétaire. Propriété de c FCI. Droits de reproduction FCI.

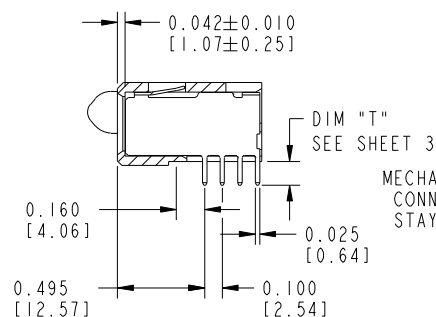


All rights strictly reserved. Reproduction or issue to third parties in any form whatever is not permitted without written authority from the proprietor. Property of FCI. Copyright FCI.

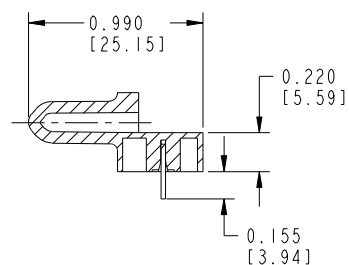
PRODUCT NUMBER
SEE SHEET 3



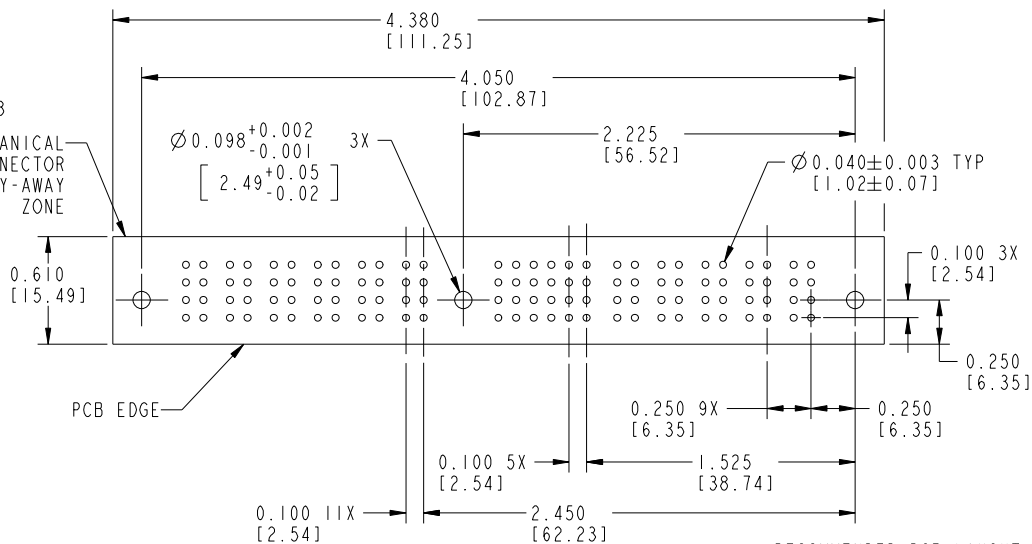
SECTION A-A




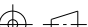
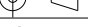
SECTION B-B



SECTION C-C



RECOMMENDED PCB LAYOUT

mat'l code				NOTE 1		tolerances unless otherwise specified		CUSTOMER		 www.fciconnect.com	
litr	ecn no.	dr	date	linear	.XX±.01/.X±.3		projection		title	5P + 24S + 1M + 6P	
T					.XXX±.005/.XX±.13					R/A SOLDER RECEPT.	
				angles	.XXXX±.0020/.XXX±.051			INCH/MM	product family	PwrBlade	
					0° ± 2°					scale	size
				dr	D. WOLFORD 01/21/99		A	51625	sheet		
				enr	J. BROWN 01/21/99					1:1	
				chr	J. BROWN 01/21/99						
				appd	J. BROWN 01/21/99						
sheet index	revision sheet										

Pro/E

cage code 22526

Tous droits strictement reserves. Reproduction ou communication a des tiers interdite sous quelque forme que ce soit sans autorisation écrite du propriétaire. Propriete de c FCI. Droits de reproduction FCI.



All rights strictly reserved. Reproduction or issue to third parties in any form whatever is not permitted without written authority from the proprietor. Property of FCI. Copyright FCI.

PRODUCT NUMBER
SEE TABLE

1 | 2

3 |

4

CODE	DIM "T"		DIM "T"		CONTACT TYPE
	+0.005 [0.12]	-0.010 [0.25]	± 0.010 [0.25]		
E	-	-	0.135 [3.43]		SIGNAL
F	-	-	0.135 [3.43]		SIGNAL
G	-	-	0.135 [3.43]		SIGNAL
H	-	-	0.135 [3.43]		SIGNAL
J	0.090 [2.29]		-	-	SIGNAL
K	0.090 [2.29]		-	-	SIGNAL
L	0.090 [2.29]		-	-	SIGNAL
M	0.090 [2.29]		-	-	SIGNAL
PA	-	-	0.135 [3.43]		POWER
PB	0.090 [2.29]		-	-	POWER
HA	N/A [N/A]		-	-	HOLD-DOWN

PRODUCT No.	ROWS	POWER										SIGNAL					POWER				
		E2	P11	P10	P9	P8	P7	P6	M1	6	5	4	3	2	1	P5	P4	P3	P2	P1	E1
51625-XX001-- NOTE: 2	D C B A																				

PRODUCT No.	ROWS	POWER										SIGNAL					POWER				
		E2	P11	P10	P9	P8	P7	P6	M1	6	5	4	3	2	1	P5	P4	P3	P2	P1	E1
51625-XX002-- NOTE: 2	D C B A																				

mat'l code				NOTE 1		tolerances unless otherwise specified		CUSTOMER		FCI	
litr	ecn no.	dr	date					COPY		www.fciconnect.com	
T						linear	.XX \pm .01/.X \pm .3	projection		title 5P + 24S + 1M + 6P R/A SOLDER RECEPT.	
							.XXX \pm .005/.XX \pm .13			product family PwrBlade	
						angles	.XXX \pm .0020/.XX \pm .051	INCH/MM		code 213	
						dr	D. WOLFORD 01/21/99	scale		size 51625	
						enrg	J. BROWN 01/21/99	1:1		sheet 3	
						chr	J. BROWN 01/21/99				
						appd	J. BROWN 01/21/99				
sheet index	revision sheet										

1 | 2

Pro/E

3 |

cage code 22526

4



All rights strictly reserved. Reproduction or issue to third parties in any form whatever is not permitted without written authority from the proprietor.
Property of FCI. Copyright FCI.

Tous droits strictement reserves. Reproduction ou communication a des tiers interdite sous quelque forme que ce soit sans autorisation écrite du propriétaire.
Propriete de c FCI. Droits de reproduction FCI.

A

B

1 | 2

3 |

4

PRODUCT NUMBER
SEE SHEET 3

CONNECTOR NOTES:

- HOUSING MATERIAL: UL 94 V-0 GLASS FILLED HIGH TEMP THERMOPLASTIC
POWER CONTACT MATERIAL: COPPER ALLOY
SIGNAL CONTACT MATERIAL: COPPER ALLOY

- PLATING: (51625-XX00X STAND OFF 51625-XX001 AND 51625-XX002)
SEE ITEM 5 & 6 IN PRINT 10064183 FOR PLATING SPEC OF 51625-XX00X AND 51625-XX00XLF RESPECTIVELY

- MANUFACTURER'S NAME, P/N, AND DATE CODE TO APPEAR ON THIS SURFACE
- PRODUCT SPECIFICATION GS-12-149

PCB NOTES:

- ALL DIMENSIONS ARE BASIC UNLESS OTHERWISE SPECIFIED.
- ALL THROUGH HOLES ARE LOCATED WITH A TRUE POSITION OF 0.004 [0.10]
- ALL HOLE DIAMETERS ARE FINISHED HOLE SIZE
- $\varnothing 0.098 [2.49]$ THROUGH HOLES ARE UNPLATED.
- $\varnothing 0.0453 \pm 0.0010 [1.151 \pm 0.025]$ DRILLED HOLES PLATED WITH 0.0003 [0.008] MIN SnPb OVER 0.001 [0.03] TO 0.003 [0.08] Cu PLATING TO ACHIEVE A $\varnothing 0.040 \pm 0.003 [1.02 \pm 0.07]$ HOLE.
- A \triangle SYMBOL WILL BE NEXT TO ANY DIMENSION, VIEW, OR NOTE WHICH HAS BEEN MODIFIED WITH THE CURRENT DRAWING REVISION.

A

CONFIDENTIAL

mat'l code				NOTE 1		tolerances unless otherwise specified		CUSTOMER		FCI			
litr	ecn no.	dr	date	linear	angles	.XX±.01/.X±.3		COPY		www.fciconnect.com			
T						.XXX±.005/.XX±.13		projection		title 5P + 24S + 1M + 6P			
						.XXX±.0020/.XX±.051				R/A SOLDER RECEPT.			
				dr		0° ± 2°				product family: 3			
				enrg		D. WOLFORD 01/21/99		INCH/MM		code 213			
				chr		J. BROWN 01/21/99		scale		size dwg no			
				appd		J. BROWN 01/21/99		1:1		A 51625			
sheet index		revision sheet											

B

1 | 2

Pro/E

3 |

cage code 22526

4