



Chipsmall Limited consists of a professional team with an average of over 10 year of expertise in the distribution of electronic components. Based in Hongkong, we have already established firm and mutual-benefit business relationships with customers from,Europe,America and south Asia,supplying obsolete and hard-to-find components to meet their specific needs.

With the principle of “Quality Parts,Customers Priority,Honest Operation,and Considerate Service”,our business mainly focus on the distribution of electronic components. Line cards we deal with include Microchip,ALPS,ROHM,Xilinx,Pulse,ON,Everlight and Freescale. Main products comprise IC,Modules,Potentiometer,IC Socket,Relay,Connector.Our parts cover such applications as commercial,industrial, and automotives areas.

We are looking forward to setting up business relationship with you and hope to provide you with the best service and solution. Let us make a better world for our industry!



## Contact us

Tel: +86-755-8981 8866 Fax: +86-755-8427 6832

Email & Skype: [info@chipsmall.com](mailto:info@chipsmall.com) Web: [www.chipsmall.com](http://www.chipsmall.com)

Address: A1208, Overseas Decoration Building, #122 Zhenhua RD., Futian, Shenzhen, China



# Customer Information Sheet

DRAWING No.: KF-460/461/4620006 SHEET 2 OF 2

IF IN DOUBT - ASK

(C)

NOT TO SCALE

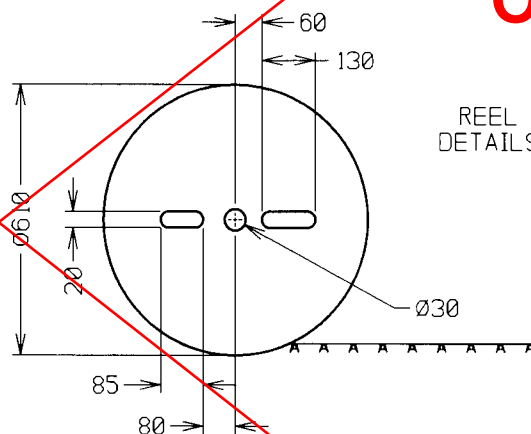
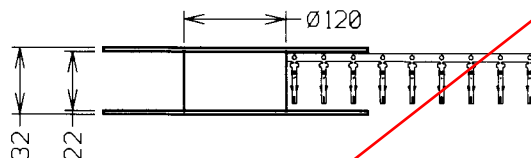
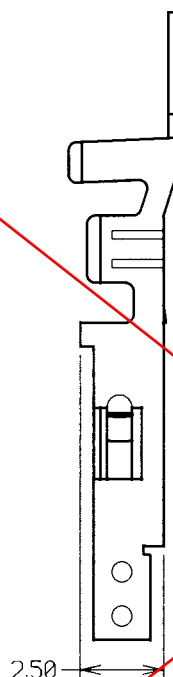
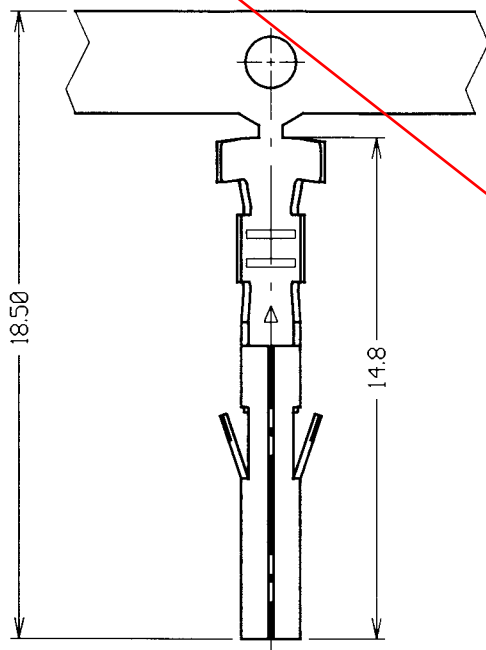
THIRD ANGLE PROJECTION

ALL DIMENSIONS IN mm

ORDER CODE:

KF-46X0006

SERIES CODE  
(SEE TABLE)



**OBSOLETE**

REEL  
DETAILS

HARWIN PART NUMBER	CRIMP PULL-OFF FORCE	WIRE SIZE
KF-4600006	88N MIN	16-20 AWG
KF-4610006	39N MIN	22-24 AWG
KF-4620006	9N MIN	26-28 AWG

## NOTES:

- FOR USE WITH CRIMP HOUSING KF-470XX00. RELEVANT SPECIFICATIONS ARE QUOTED ON THE CRIMP HOUSING DRAWING. FOR COMPLETE SPECIFICATION, SEE COMPONENT SPECIFICATION C033XX (LATEST ISSUE).
- QUANTITY PER REEL = 5,000. PITCH OF CONTACTS ON CARRIER = 11mm.

JAE	2	0108.03	7538
NAME	ISS.	DATE	C/NOTE
APPROVED:			
CHECKED:			
DRAWN:			W. J. BOURNE
CUSTOMER REF.:			
ASSEMBLY DRG:			

# HARWIN

HARWIN INC  
U.S.A.  
TEL: (812) 542 2546  
FAX: (812) 542 2541

HARWIN PLC  
U.K.  
TEL: 023 9237 0451  
FAX: 023 9231 4590

HARWIN PTE  
SINGAPORE  
TEL: 65 6779 4909  
FAX: 65 6779 3868

THIS DRAWING AND ANY  
INFORMATION OR DESCRIPTIVE  
MATTER SET OUT HEREON ARE  
CONFIDENTIAL AND COPYRIGHT  
PROPERTY OF THE HARWIN  
GROUP AND MUST NOT BE  
DISCLOSED, LOANED, COPIED  
OR USED FOR MANUFACTURING,  
TENDERING OR FOR ANY  
OTHER PURPOSE WITHOUT  
THEIR WRITTEN PERMISSION.

## TOLERANCES

X. - ±1mm  
X.X - ±0.25mm  
X.XX - ±0.10mm  
X.XXX - ±0.01mm  
ANGLES - ±5°  
UNLESS STATED

## MATERIAL:

BRASS

FINISH: 0.5μ NICKEL, 2.0μ TIN

S/AREA: mm²

## TITLE:

POWERFIT®  
4.2mm PITCH FEMALE  
CRIMP SOCKET (REELED)

## DRAWING NUMBER:

KF-460/461/4620006

SHT  
2  
OF  
2

# Customer Information Sheet

DRAWING No.: KF-4600046

SHEET 2 OF 2

IF IN DOUBT - ASK

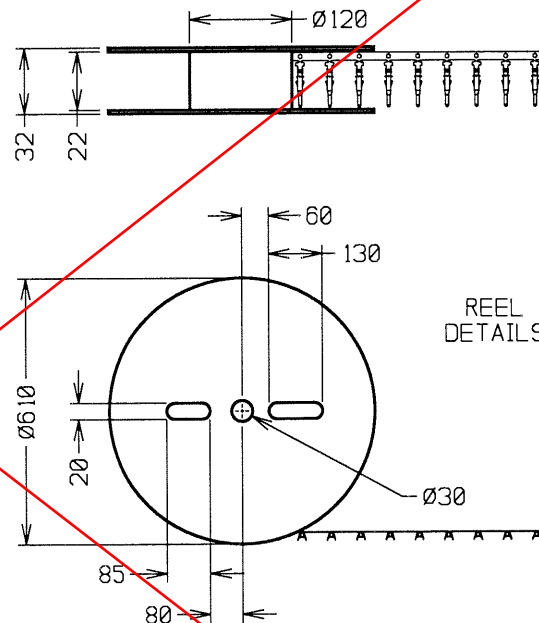
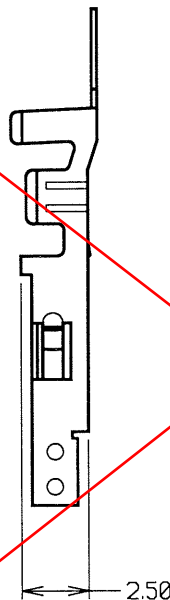
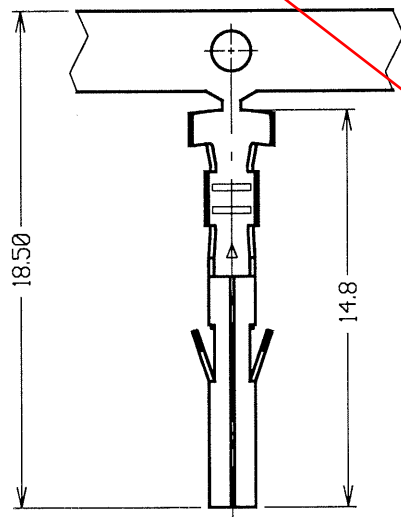
(C)

NOT TO SCALE

THIRD ANGLE PROJECTION

ALL DIMENSIONS IN mm

**OBSOLETE**



REEL  
DETAILS

## NOTES:

1. FOR USE WITH WIRE SIZE 18-20 AWG.
2. CRIMP PULL-OFF FORCE = 88N MIN.
3. USE WITH CRIMP HOUSING KF-4700200 & KF-4700300. FOR COMPLETE SPECIFICATION SEE COMPONENT SPEC. C033XX (LATEST ISSUE).
4. FINISH: 2.0µ 100% TIN OVER 0.5µ NICKEL.
5. QUANTITY PER REEL = 5,000. PITCH OF CONTACTS ON CARRIER = 11mm.

JMB	1	28.06.06	----
NAME	ISS.	DATE	C/NOTE
APPROVED:			
CHECKED:			
DRAWN:	JM BROOKES		
CUSTOMER REF.:			
ASSEMBLY DRG:			

**HARWIN**

HARWIN USA TEL: 603 893 5376 FAX: 603 893 5396 mis@harwin.com	HARWIN Europe (UK) TEL: 023 9231 4545 FAX: 023 9231 4590 mis@harwin.co.uk	HARWIN Asia TEL: +65 6 779 4909 FAX: +65 6 779 3868 mis@harwin.com.sg
--	--	--

THIS DRAWING AND ANY  
INFORMATION OR DESCRIPTIVE  
MATTER SET OUT HEREON ARE  
CONFIDENTIAL AND COPYRIGHT  
PROPERTY OF THE HARWIN  
GROUP AND MUST NOT BE  
DISCLOSED, LOANED, COPIED  
OR USED FOR MANUFACTURING,  
TENDERING OR FOR ANY  
OTHER PURPOSE WITHOUT  
THEIR WRITTEN PERMISSION.

TOLERANCES  
X. = ±1mm  
X.X = ±0.25mm  
X.XX = ±0.10mm  
X.XXX = ±0.01mm  
ANGLES = ±5°  
UNLESS STATED

MATERIAL:

BRASS

FINISH: SEE NOTE 4

S/AREA:

mm<sup>2</sup>

TITLE: POWERFIT®  
4.2mm PITCH FEMALE  
CRIMP CONTACT (REELED)

DRAWING NUMBER:

KF-4600046

SHT  
2  
OF  
2