



Chipsmall Limited consists of a professional team with an average of over 10 year of expertise in the distribution of electronic components. Based in Hongkong, we have already established firm and mutual-benefit business relationships with customers from,Europe,America and south Asia,supplying obsolete and hard-to-find components to meet their specific needs.

With the principle of “Quality Parts,Customers Priority,Honest Operation,and Considerate Service”,our business mainly focus on the distribution of electronic components. Line cards we deal with include Microchip,ALPS,ROHM,Xilinx,Pulse,ON,Everlight and Freescale. Main products comprise IC,Modules,Potentiometer,IC Socket,Relay,Connector.Our parts cover such applications as commercial,industrial, and automotives areas.

We are looking forward to setting up business relationship with you and hope to provide you with the best service and solution. Let us make a better world for our industry!



Contact us

Tel: +86-755-8981 8866 Fax: +86-755-8427 6832

Email & Skype: info@chipsmall.com Web: www.chipsmall.com

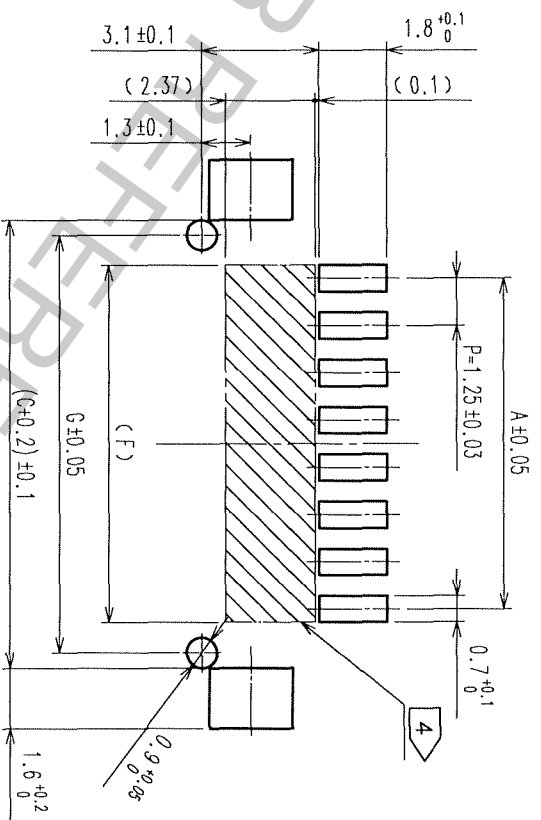
Address: A1208, Overseas Decoration Building, #122 Zhenhua RD., Futian, Shenzhen, China



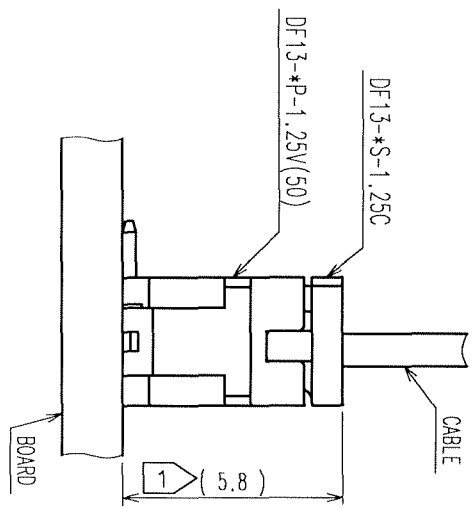
| COUNT | DESCRIPTION OF REVISIONS | BY | CHKD | DATE | COUNT | DESCRIPTION OF REVISIONS | BY | CHKD | DATE |
|-------|--------------------------|---------|------|----------|-------|--------------------------|----|------|------|
| 1 | DIS-H-001907 | T.K.H.U | | 07.04.02 | | | | | |
| | | | | | | | | | |
| | | | | | | | | | |

| CODE No. | PART No. | NUMBER OF CONTACT | A | B | C | D | E | F | G |
|-----------------|--------------------|-------------------|-------|-------|-------|-------|-------|-------|-------|
| CL536-0201-3-50 | DF13- 2P-1.25V(50) | 2 | 1.25 | 3.15 | 4.15 | 7.15 | 5.65 | 1.95 | 3.35 |
| CL536-0202-6-50 | DF13- 3P-1.25V(50) | 3 | 2.50 | 4.40 | 5.40 | 8.40 | 6.90 | 3.20 | 4.60 |
| CL536-0203-9-50 | DF13- 4P-1.25V(50) | 4 | 3.75 | 5.65 | 6.65 | 9.65 | 8.15 | 4.45 | 5.85 |
| CL536-0204-1-50 | DF13- 5P-1.25V(50) | 5 | 5.00 | 6.90 | 7.90 | 10.90 | 9.40 | 5.70 | 7.10 |
| CL536-0205-4-50 | DF13- 6P-1.25V(50) | 6 | 6.25 | 8.15 | 9.15 | 12.15 | 10.65 | 6.95 | 8.35 |
| CL536-0206-7-50 | DF13- 7P-1.25V(50) | 7 | 7.50 | 9.40 | 10.40 | 13.40 | 11.90 | 8.20 | 9.60 |
| CL536-0207-0-50 | DF13- 8P-1.25V(50) | 8 | 8.75 | 10.65 | 11.65 | 14.65 | 13.15 | 9.45 | 10.85 |
| CL536-0208-2-50 | DF13- 9P-1.25V(50) | 9 | 10.00 | 11.90 | 12.90 | 15.90 | 14.40 | 10.70 | 12.10 |
| CL536-0209-5-50 | DF13-10P-1.25V(50) | 10 | 11.25 | 13.15 | 14.15 | 17.15 | 15.65 | 11.95 | 13.35 |
| CL536-0210-4-50 | DF13-11P-1.25V(50) | 11 | 12.50 | 14.40 | 15.40 | 18.40 | 16.90 | 13.20 | 14.60 |
| CL536-0211-7-50 | DF13-12P-1.25V(50) | 12 | 13.75 | 15.65 | 16.65 | 19.65 | 18.15 | 14.45 | 15.85 |
| CL536-0213-2-50 | DF13-14P-1.25V(50) | 14 | 16.25 | 18.15 | 19.15 | 22.15 | 20.65 | 16.95 | 18.35 |
| CL536-0214-5-50 | DF13-15P-1.25V(50) | 15 | 17.50 | 19.40 | 20.40 | 23.40 | 21.90 | 18.20 | 19.60 |

RECOMMENDED PATTERN



APPLICATION DRAWING



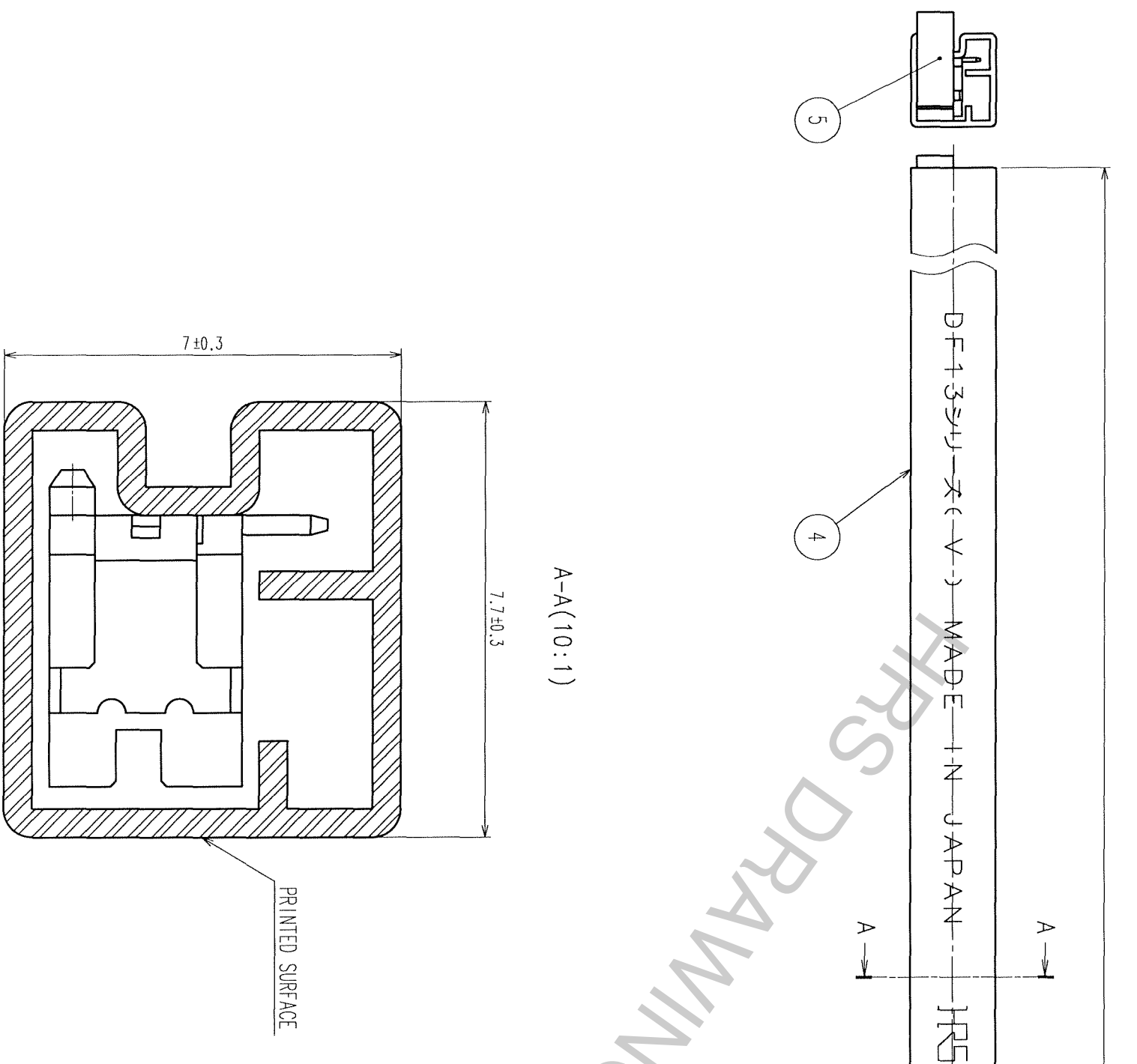
- NOTES
- 1 WHEN THIS CONNECTOR MATES WITH DF13-*S-1.25C, THE MATING HEIGHT IS 5.8mm.
 - 2 WHEN THIS CONNECTOR HAS TWO OR THREE CONTACTS, THE LOCK SHALL BE SET AT THE CENTER OF HOUSING. IF MORE THAN FOUR, THE TWO LOCKS SHALL BE SET AS SHOWN ON THIS DRAWING.
 - 3 LEAD CO-PLANARITY INCLUDING REINFORCED METAL FITTINGS SHALL BE WITHIN 0.1mm.
 - 4 PROHIBITED AREA OF PATTERN WITHOUT RESIST COATING.

| | | | | | |
|-----|-----------|--|-----|----------|-----------------------------------|
| 2 | BRASS | SURFACE:GOLD PLATED 0.2 μ m min UNDER PLATING:NICKEL PLATED 0.5 μ m min | 5 | S.PVC | GRAY, STOPPER |
| 1 | POLYAMIDE | UL94V-0, BEIGE | 4 | R.PVC | ANTI-ELECTRIFICATION, CLEAR, STOP |
| NO. | MATERIAL | FINISH, REMARKS | NO. | MATERIAL | FINISH, REMARKS |

| | | | | | |
|----------------|-----------|------------|-----------|-----------|----------|
| CODE NO. (OLD) | DRAWN | DESIGNED | CHECKED | APPROVED | RELEASED |
| | A.Miura | T.Kumazawa | H.Umehara | T.Oma | |
| | '06.05.09 | '06.05.10 | '06.05.11 | '06.05.11 | |

| | |
|--------------------------|-------------------|
| DRAWING NO. | PART NO. |
| EDC3-083664-02 | DF13-*P-1.25V(50) |
| SCALE 5 : 1 | CODE NO. |
| UNITS mm | CL536- |
| HRS | |
| HIROSE ELECTRIC CO., LTD | |

| |
|----|
| TO |
| |
| |
| |



| 5 | | | | | 6 | | | 7 | | | 8 | | |
|-------|--------------------------|----|------|------|---|-------|--------------------------|----|------|------|---|--|--|
| COUNT | DESCRIPTION OF REVISIONS | BY | CHKD | DATE | | COUNT | DESCRIPTION OF REVISIONS | BY | CHKD | DATE | | | |
| △ | | | | • • | | △ | | | | • • | | | |
| △ | | | | • • | | △ | | | | • • | | | |
| △ | | | | • • | | △ | | | | • • | | | |



| CODE No. | PART No. | PACKING AMOUNT |
|-----------------|--------------------|----------------|
| CL536-0201-3-50 | DF13- 2P-1.25V(50) | 67 |
| CL536-0202-6-50 | DF13- 3P-1.25V(50) | 57 |
| CL536-0203-9-50 | DF13- 4P-1.25V(50) | 49 |
| CL536-0204-1-50 | DF13- 5P-1.25V(50) | 44 |
| CL536-0205-4-50 | DF13- 6P-1.25V(50) | 39 |
| CL536-0206-7-50 | DF13- 7P-1.25V(50) | 36 |
| CL536-0207-0-50 | DF13- 8P-1.25V(50) | 33 |
| CL536-0208-2-50 | DF13- 9P-1.25V(50) | 30 |
| CL536-0209-5-50 | DF13-10P-1.25V(50) | 28 |
| CL536-0210-4-50 | DF13-11P-1.25V(50) | 26 |
| CL536-0211-7-50 | DF13-12P-1.25V(50) | 24 |
| CL536-0213-2-50 | DF13-14P-1.25V(50) | 21 |
| CL536-0214-5-50 | DF13-15P-1.25V(50) | 20 |

NOTES

5 :MAGAZINE CASE HAS ONE STOPPER AT EACH END.

6 :WARPAGE, BENT OF THE MAGAZINE CASE SHALL BE ALLOWED $\pm 2\text{mm}$ PER 510mm.

7 : THESE CONNECTORS SHALL BE ON SALED IN ACCORDANCE WITH THE MULTIPLE QUANTITY OF PACKING AMOUNT.

| | | | | | | | | | | | |
|---|--|---|--|-------------------|--|------------|--|-----------|--|----------|--|
| CODE NO. (CLD) | | DRAWN | | DESIGNED | | CHECKED | | APPROVED | | RELEASED | |
| | | A. Miura | | T. Kumazawa | | H. Umehara | | T. Oma | | | |
| | | '06.05.09 | | '06.05.10 | | '06.05.11 | | '06.05.11 | | . | |
|  | | DRAWING NO. | | PART NO. | | | | | | | |
| SCALE FREE | | EDC3-083664-02 | | DF13-*P-1.25V(50) | | | | | | | |
| UNITS mm | |  | | CODE NO. | | CL536- | | | | 2 | |
| | | HIROSE ELECTRIC CO., LTD | | | | | | | | | |