



Chipsmall Limited consists of a professional team with an average of over 10 year of expertise in the distribution of electronic components. Based in Hongkong, we have already established firm and mutual-benefit business relationships with customers from,Europe,America and south Asia,supplying obsolete and hard-to-find components to meet their specific needs.

With the principle of “Quality Parts,Customers Priority,Honest Operation,and Considerate Service”,our business mainly focus on the distribution of electronic components. Line cards we deal with include Microchip,ALPS,ROHM,Xilinx,Pulse,ON,Everlight and Freescale. Main products comprise IC,Modules,Potentiometer,IC Socket,Relay,Connector.Our parts cover such applications as commercial,industrial, and automotives areas.

We are looking forward to setting up business relationship with you and hope to provide you with the best service and solution. Let us make a better world for our industry!



Contact us

Tel: +86-755-8981 8866 Fax: +86-755-8427 6832

Email & Skype: info@chipsmall.com Web: www.chipsmall.com

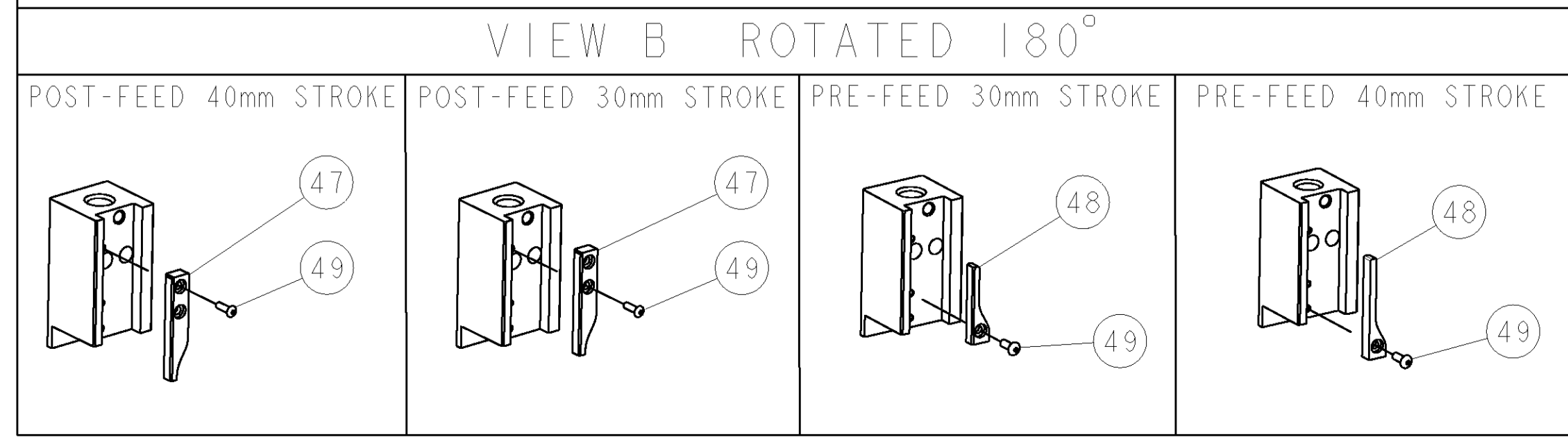
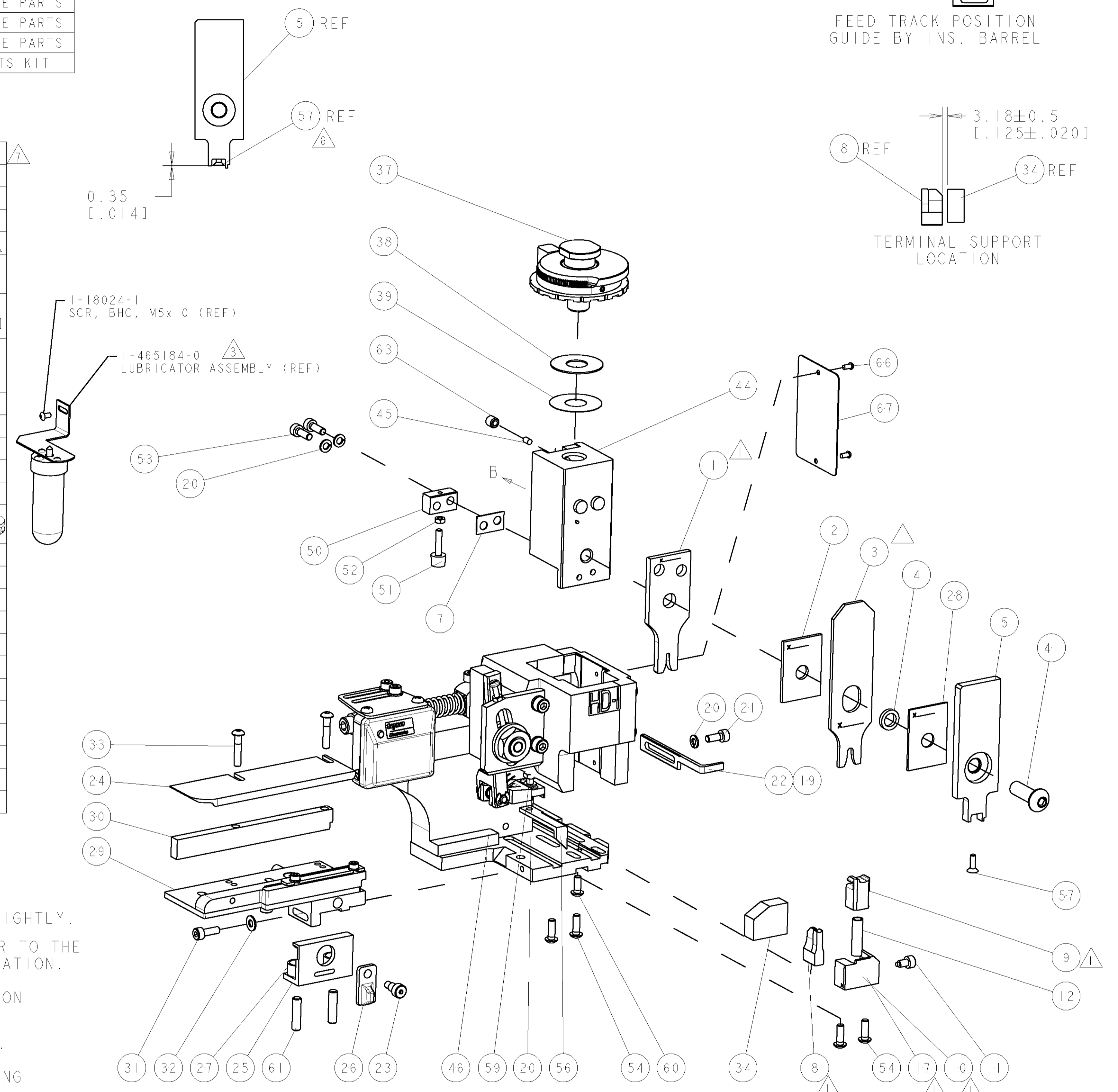
Address: A1208, Overseas Decoration Building, #122 Zhenhua RD., Futian, Shenzhen, China



PART NUMBER	REV	TERMINATOR	FEED TYPE	DESCRIPTION
1528923-1	A	LEADMAKER	MECH POST FEED	CUTS CARRIER
1528923-2	A	BENCH	MECH PRE FEED	CUTS CARRIER
1528923-6	A	LEADMAKER	MECH POST FEED	CONTINUOUS CARRIER
7-1528923-1	A	LEADMAKER	MECH POST FEED	-1 AND SPARE PARTS
7-1528923-2	A	BENCH	MECH PRE FEED	-2 AND SPARE PARTS
7-1528923-6	A	LEADMAKER	MECH POST FEED	-6 AND SPARE PARTS
7-1528923-7	A	-	-	SPARE PARTS KIT

CRIMP DATA		DELPHI TERMINAL		DELPHI CRIMP SPECS	
TERMINAL NAME: TAXI TERMINAL F M/P 150 TANG					
CRIMP	SIZE	TYPE	RANGE		
WIRE	1.78 [1.070 IN]	F	0.35-0.50mm ²		
INSUL	4.06 [1.160 IN]	O	1.30-2.20 [1.051-.087 IN]		
WIRE STRIP LENGTH		APPL INSTRUCTIONS			
5.60 [1.220 IN]		408-8322 & 408-8490			
TERMINAL DELPHI CRIMP DATA SHTS.			FEED		
APPL SPEC 12084200, 12160222 & 15326396			12.27 [1.483 IN]		
TERMINALS APPLIED					
TE TERM PN	MANUF TERM PN	TE SEAL PN	MANUF SEAL PN		
286933-1	12084200	286934-1	12052925		
286933-2	12160222	286934-2	15324974		
286933-3	15326396	1572277-1	12048087		
WIRE SIZE	CRIMP HEIGHT	REF SETTING			
0.50mm ²	0.95 ± 0.05 [1.037 ± .002 IN]	C 8			
0.35mm ²	0.85 ± 0.05 [1.033 ± .002 IN]	D 5			

- △ RECOMMENDED SPARE PARTS.
- 2. GREASE RAM, CAM, CAM FOLLOWER AND FEED ROD LIGHTLY.
- △ CERTAIN TERMINALS REQUIRE LUBRICATION. REFER TO THE APPLICATOR INSTRUCTION SHEET FOR MORE INFORMATION.
- 4. LUBRICATE DAILY PER THE APPLICATOR INSTRUCTION SHEET SUPPLIED WITH THE APPLICATOR.
- △ THIS APPLICATOR APPLIES TERMINAL WITH A SEAL. INSULATION DIA QUOTED IS RANGE OF TERMINAL. WIRE INSULATION DIA IS DEPENDENT ON SEAL BEING APPLIED. SEAL PMS AS SHOWN ABOVE, INS. DIA RANGE IS 1.29-1.70.
- △ APPLY TORQ-SEAL IN ALLEN SOCKET TO FILL HOLE AFTER FLAT HD HAS BEEN ADJUSTED TO CORRECT HEIGHT AT QUALIFICATION. APPLY #1-23419-5 LOC-TITE TO THREADS.
- △ CRIMP DATA SUPPLIED BY THE TERMINAL MANUFACTURER.
- △ SEE DELPHI DATA SHEET FOR SPECIFIC WIRE DETAILS.



-77	-76	-72	-71	-6	-2	-1	PART NO	DESCRIPTION	ITEM NO
-	-	-	-	-	-	-	-	-	84
-	-	-	-	-	-	-	-	-	83
-	-	-	-	-	-	-	-	-	82
-	-	-	-	-	-	-	-	-	81
-	-	-	-	-	-	-	-	-	80
-	-	-	-	-	-	-	-	-	79
-	-	-	-	-	-	-	-	-	78
-	-	-	-	-	-	-	-	-	77
-	-	-	-	-	-	-	-	-	76
-	-	-	-	-	-	-	-	-	75
-	-	-	-	-	-	-	-	-	74

SET UP GAGE
458637-3

LOC	DIST	REV	DATE	BY	APPV
A	66		25SEP2008	LJL	MC

REVISIONS						
REV	DATE	BY	APPV	DESCRIPTION	DATE	BY
A	25SEP2008	LJL	MC	SEE ECO-08-023914		

ITEM NO	DESCRIPTION	QTY	UNIT	REMARKS
73				
72				
71	DOCUMENTATION PACKAGE	1		
70				
69				
68				
67	PLATE, IDENTIFICATION	1		
66	SCREW, DRIVE	2		
65				
64				
63	SCR, SET, CUP POINT M6 X 6.0	1		
62				
61	SCR, SET, FLT POINT M5 X 20.0	2		
60	SCR, BTN SKT HD CAP (M4 X 10.0)	1		
59	SCR, HEX HD CAP M4 X 8.0	1		
58				
57	SCR, FLT SKT HD CAP M3 X 10.0	1		
56	PAWL, FEED	1		
55				
54	SCR, BTN SKT HD CAP (M4 X 12.0)	4		
53	SCR, SKT HD CAP M4 X 12.0	2		
52	NUT, HEX, REG M3	1		
51	BUMPER, HOLD DOWN	1		
50	SPACER, TONKER	1		
49	SCR, BTN SKT HD CAP (M3 X 10.0)	1		
48	CAM, UNIVERSAL PRE FEED	1		
47	CAM, UNIVERSAL POST-FEED	1		
46	APPLICATOR SUBASSEMBLY, HDI	1		
45	PLUG, NYLON	1		
44	RAM	1		
43				
42				
41	SCR, BTN SKT HD CAP (M8 X 25.0)	1		
40				
39	SHIM SUB-ASSY	1		
38	SHIM	1		
37	FINE ADJUST HEAD ASSEMBLY	1		
36				
35				
34	SUPPORT, TERMINAL	1		
33	SCR, BTN SKT HD CAP (M4 X 20.0)	2		
32	WASHER, FLAT, REG M4	1		
31	SCR, SKT HD CAP M4 X 12.0	1		
30	SPACER, STRIP GUIDE	1		
29	STRIP GUIDE ASSEMBLY	1		
28	SPACER, CRIMPER	1		
27	SPRING, COMPRESSION	2		
26	LEVER, DRAG RELEASE	1		
25	DRAG, TERMINAL	1		
24	PLATE, STRIP GUIDE	1		
23	SCR, SKT HD SHLDR 5.0 DIA X 6.0	1		
22	STRIPPER	1		
21	SCR, SKT HD CAP M4 X 10.0	1		
20	WASHER, SPRG LOCK, REG M4	4		
19	STRIPPER	1		
18				
17	SHEAR HOLDER, FRONT	1		
16				
15				
14				
13				
12	SPRING, COMPRESSION	1		
11	STOP, SHEAR	1		
10	SHEAR HOLDER, FRONT, CUT	1		
9	FLOATING SHEAR, FRONT	1		
8	ANVIL, COMBINATION .070	2		
7	SPACER	1		
6				
5	DEPRESSOR, SHEAR	1		
4	BLOCK, CRIMPER SPACER	1		
3	CRIMPER, INSUL O PREMIUM	2		
2	SPACER, CRIMPER	1		
1	CRIMPER, WIRE PREMIUM	2		

DIMENSIONS: mm [IN]		TOLERANCES UNLESS OTHERWISE SPECIFIED: 0 PLC ± 1 PLC ± 2 PLC ± 3 PLC ± 4 PLC ± ANGLES ±		DWN JL LOETHOUSE CHK M CLIFFORD APVD M CLIFFORD PRODUCT SPEC APPLICATION SPEC See Table WEIGHT CUSTOMER DRAWING	28JUL2008 28JUL2008 NAME FINE ADJUST SIDE FEED HDI APPLICATOR SIZE CAGE CODE DRAWING NO A1 00779 C-1528923 SCALE 3:5 SHEET 1 OF 1 REV A
------------------------	--	---	--	--	---