



Chipsmall Limited consists of a professional team with an average of over 10 year of expertise in the distribution of electronic components. Based in Hongkong, we have already established firm and mutual-benefit business relationships with customers from,Europe,America and south Asia,supplying obsolete and hard-to-find components to meet their specific needs.

With the principle of “Quality Parts,Customers Priority,Honest Operation,and Considerate Service”,our business mainly focus on the distribution of electronic components. Line cards we deal with include Microchip,ALPS,ROHM,Xilinx,Pulse,ON,Everlight and Freescale. Main products comprise IC,Modules,Potentiometer,IC Socket,Relay,Connector.Our parts cover such applications as commercial,industrial, and automotives areas.

We are looking forward to setting up business relationship with you and hope to provide you with the best service and solution. Let us make a better world for our industry!



## Contact us

Tel: +86-755-8981 8866 Fax: +86-755-8427 6832

Email & Skype: [info@chipsmall.com](mailto:info@chipsmall.com) Web: [www.chipsmall.com](http://www.chipsmall.com)

Address: A1208, Overseas Decoration Building, #122 Zhenhua RD., Futian, Shenzhen, China

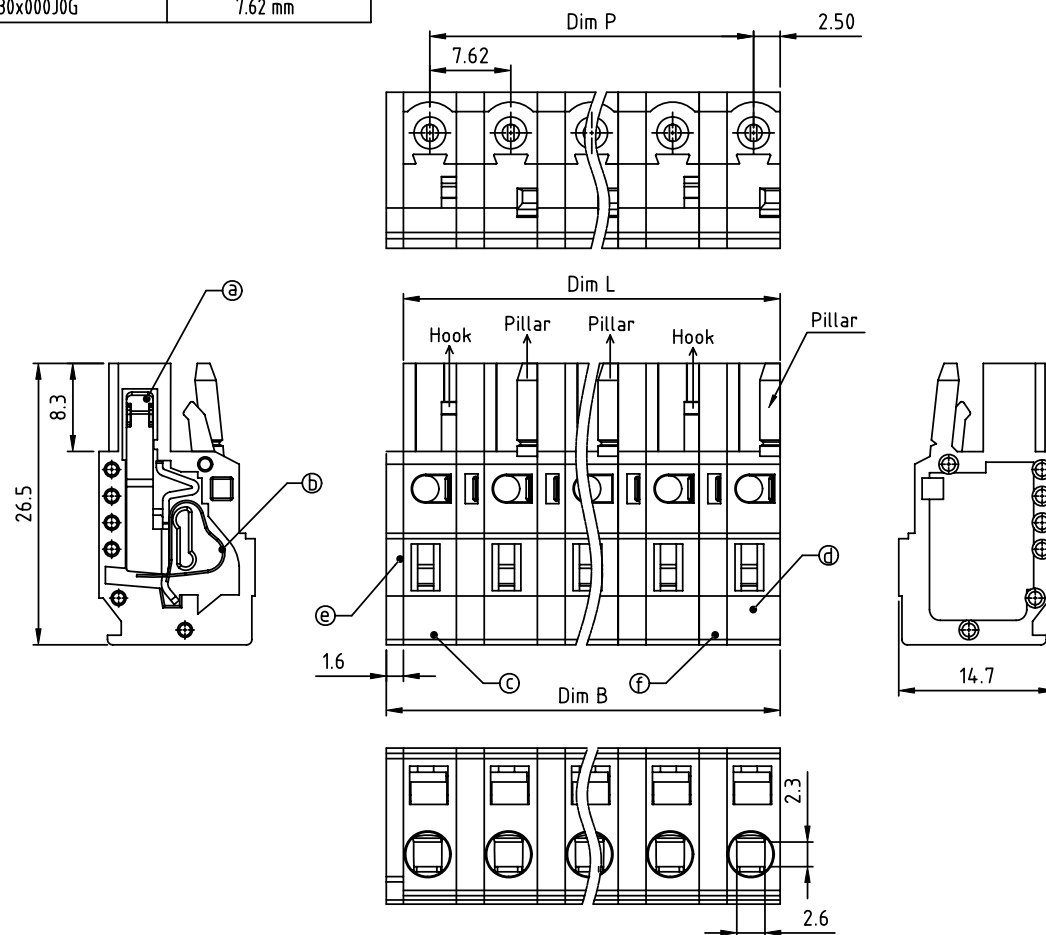


PRODUCT NUMBER

PITCH

Hlxx30x000J0G

7.62 mm



## Material:

- Item ① Female contact: PhBz Tin plated
- Item ② Spring Clamp: Stainless steel
- Item ③ Terminal housing (With hook): Thermoplastic (UL94V-0)
- Item ④ Terminal housing (With Pillar): Thermoplastic (UL94V-0)
- Item ⑤ Terminal (cover): Thermoplastic (UL94V-0)
- Item ⑥ Pad board: Thermoplastic (UL94V-0)

## Electrical:

- Voltage rating: 300 V
- Current rating: 15 A (mated with OQ series)
- Wire range:
- Solid wire(AWG): 12-28
- Stranded wire(AWG): 12-28
- Wire strip length: 8-9mm
- Withstanding Voltage: 1.6KV
- Operating temperature: -40°C to +115°C
- Safety Approval: cULus

## Layout of Hook and Pillar:

2P	Hook+Pillar
3P	Hook+Hook+Pillar
4P	Hook+Pillar+Hook+Pillar
5P	Hook+Pillar+Pillar+Hook+Pillar
5P over	Hook+Pillar+...+Pillar+Hook+Pillar

## DIMENSION

Dim L=N×7.62-2.62
Dim P=(N-1)×7.62
Dim B=N×7.62-1.02

N=Number of poles

Poles	Tolerance
2P-4P	±0.15
5P-8P	±0.25
9P-12P	±0.30
13P-16P	±0.40

PART NO.: HI xx 30 x 0 00J0 G

End stackable	No. of poles	Color	RoHS compliant
0	2	Black (RAL9005)	(lead<4%)
02	2 poles	Red (RAL3001/D)	In copper Alloy
03	3 poles	Orange(RAL2011/P)	
...	...	Yellow(RAL1018/A)	
16	16 poles	Green(RAL6018/T)	
		Blue (RAL5015/A)	
		Grey(RAL7035/D)	
		White(RAL1102)	
		Green(RAL6018/U)	

mat'l. code				surface	tolerance	projection	product family		
ltr	ecn	no	dr	date	ASME Y14.5	ASME Y14.5	TERMINAL BLOCK		
					tolerances unless otherwise specified		title		
					angles	X.±0.5	TERMINAL BLOCK		
					dim	X.X±0.3	SPRING CLAMP, PLUGGABLE PLUG		
					X'±1"	X.XX±0.1	scale		
					dr	EVIN ZHONG 051414	dwg no		
					enr	EVIN ZHONG 051414	sheet 1 of 1		
					chr	HANKE FENG 051414	Hlxx30x000J0G		
					appd	SHI JUN 051414	type		
							CUSTOMER Drawing		
sheet	revision	A					size		
index	sheet	1					A4		