



Chipsmall Limited consists of a professional team with an average of over 10 year of expertise in the distribution of electronic components. Based in Hongkong, we have already established firm and mutual-benefit business relationships with customers from,Europe,America and south Asia,supplying obsolete and hard-to-find components to meet their specific needs.

With the principle of “Quality Parts,Customers Priority,Honest Operation,and Considerate Service”,our business mainly focus on the distribution of electronic components. Line cards we deal with include Microchip,ALPS,ROHM,Xilinx,Pulse,ON,Everlight and Freescale. Main products comprise IC,Modules,Potentiometer,IC Socket,Relay,Connector.Our parts cover such applications as commercial,industrial, and automotives areas.

We are looking forward to setting up business relationship with you and hope to provide you with the best service and solution. Let us make a better world for our industry!



## Contact us

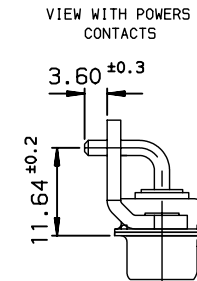
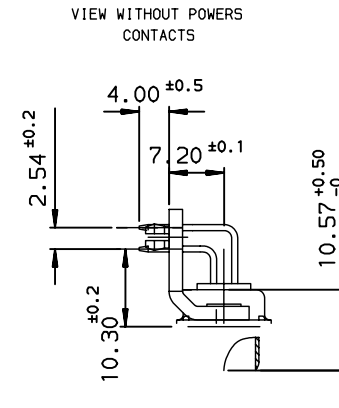
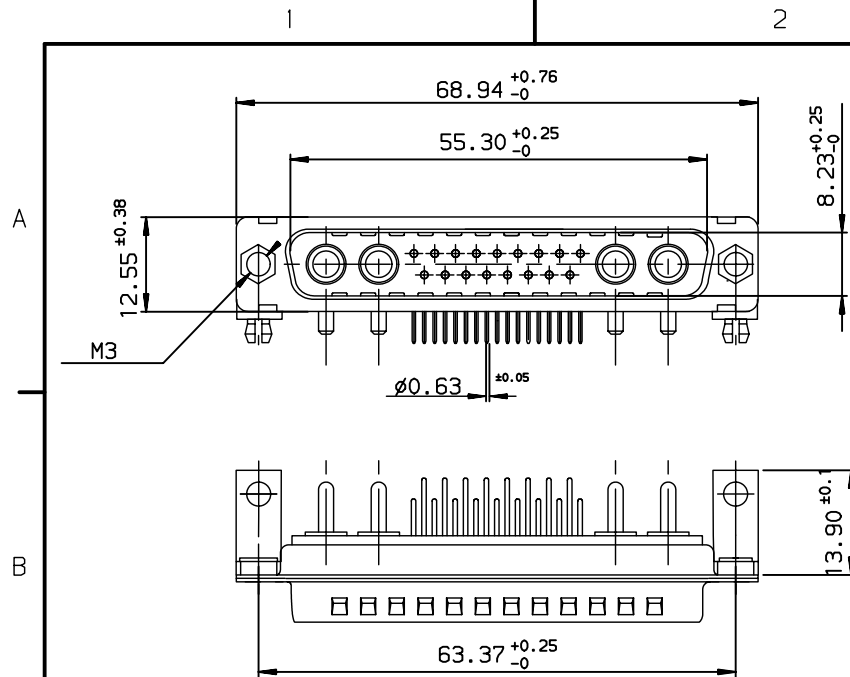
Tel: +86-755-8981 8866 Fax: +86-755-8427 6832

Email & Skype: [info@chipsmall.com](mailto:info@chipsmall.com) Web: [www.chipsmall.com](http://www.chipsmall.com)

Address: A1208, Overseas Decoration Building, #122 Zhenhua RD., Futian, Shenzhen, China



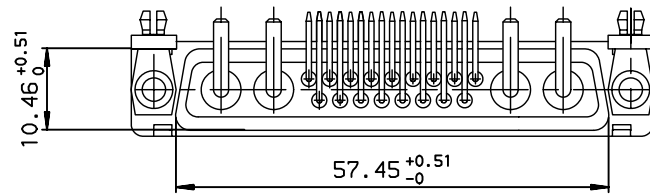
GENERAL CHARACTERISTICS : SEE DRAWING C01-8639-0000



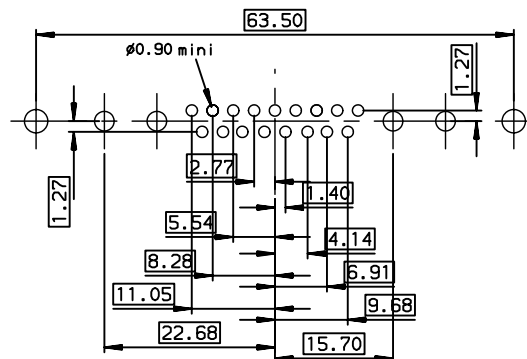
DCL21WA4P500G30

DCL21WA4P500G40




PART NUMBER



LAYOUT DIMENSIONS (after plating)  
CONNECTOR SIDE VIEW



rev	ecn no	dr	date
B	-	CJA	2003/10/16
C	LS07-0250	MPE	2007/10/04
-	-	-	-
-	-	-	-
-	-	-	-
-	-	-	-

www.fciconnect.com			surface ISO 1302 ✓		tolerance std ISO 406 ISO 1101		projection 		mm 		
			TOLERANCES UNLESS OTHERWISE SPECIFIED								
Dr	JARRY	2003/10/16	ANGULAR	LINEAR	0.X	±0.1	size A3	Scale 1.5	ECN LS07-0250		
Eng	JARRY	2003/10/16			0.XX	±0.1					
Chr	LEGARE	2003/10/16			0.XXX	±0.1					
Appr	LEGARE	2003/10/16	Product family				SUB	Spec ref -			
			PINS CRS RIGHT ANGLED WITH POWERS CONTACTS				dwg no C01-8639-0460		Rev. C		
catalog no			-				CUSTOMER		sheet 1 of 1		

REV F - 2006-04-17