



Chipsmall Limited consists of a professional team with an average of over 10 year of expertise in the distribution of electronic components. Based in Hongkong, we have already established firm and mutual-benefit business relationships with customers from,Europe,America and south Asia,supplying obsolete and hard-to-find components to meet their specific needs.

With the principle of “Quality Parts,Customers Priority,Honest Operation,and Considerate Service”,our business mainly focus on the distribution of electronic components. Line cards we deal with include Microchip,ALPS,ROHM,Xilinx,Pulse,ON,Everlight and Freescale. Main products comprise IC,Modules,Potentiometer,IC Socket,Relay,Connector.Our parts cover such applications as commercial,industrial, and automotives areas.

We are looking forward to setting up business relationship with you and hope to provide you with the best service and solution. Let us make a better world for our industry!



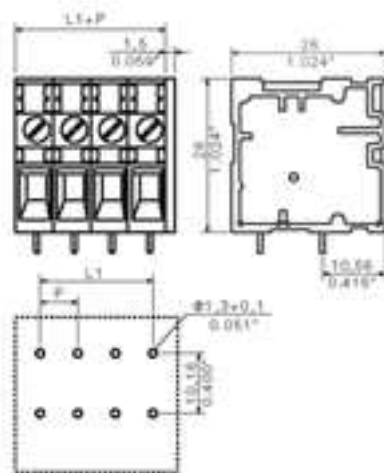
## Contact us

Tel: +86-755-8981 8866 Fax: +86-755-8427 6832

Email & Skype: [info@chipsmall.com](mailto:info@chipsmall.com) Web: [www.chipsmall.com](http://www.chipsmall.com)

Address: A1208, Overseas Decoration Building, #122 Zhenhua RD., Futian, Shenzhen, China





#### General ordering data

Order No.	1786080000
Part designation	TOP4GS10/90 6.35 OR
Version	PCB terminal, TOP connection, Soldered connection, Clamping range, max.: 6 mm <sup>2</sup> , Pitch: 6.35 mm, No. of poles: 10, 90°, Box
EAN	4032248200719
Qty.	50 pc(s).

#### System parameters

Product family	System TOP4GS
Conductor connection system	TOP connection
Fitted to PCB	Soldered connection
Outgoing direction of conductor	90°
Pitch	6.35 mm
Pitch in inch	0.25 inch
No. of poles	10
Fitted by customer	no
No. of rows	1
Solder pin length	3.5 mm
Dia. of fitting hole	1.3 mm
Fitting hole tolerance	+ 0.1 mm
No. of solder pins per pole	2
Screwdriver blade	0.6 x 3.5
Tightening torque, min.	0.5 Nm
Tightening torque, max.	0.6 Nm
Clamping screw	M 3
Stripping length	13 mm
L1 in mm	57.15 mm
L1 in inch	2.25 inch

#### Material data

Insulating material	PA
Colour	orange
colour chart	Similar to RAL 2000

#### Material data

Insulating material group	I
Flammability class UL 94	V-2
CTI	$\geq 600$
Contact base material	E-Cu
Contact surface	tinned
Storage temperature, min.	-25 °C
Storage temperature, max.	55 °C

#### Connectable conductors

Clamping range, min.	0.13 mm <sup>2</sup>
Clamping range, max.	6 mm <sup>2</sup>
AWG, min.	26
AWG, max.	10
Solid, min. H05(07) V-U	0.5 mm <sup>2</sup>
Solid, max. H05(07) V-U	6 mm <sup>2</sup>
Flexible, min. H05(07) V-K	0.5 mm <sup>2</sup>
Flexible, max. H05(07) V-K	4 mm <sup>2</sup>
With wire end ferrule, acc. to DIN 46 228/1, min.	0.5 mm <sup>2</sup>
With wire end ferrule, acc. to DIN 46 228/1, max.	4 mm <sup>2</sup>
w. plastic collar ferrule, DIN 46228 pt 4, min.	0.5 mm <sup>2</sup>
w. plastic collar ferrule, DIN 46228 pt 4, max.	4 mm <sup>2</sup>
Gauge to EN 60999 a x b; ø	2.8 mm x 2.4 mm;

#### DIN IEC rating data

Rated current, min. No. pins (Tu=20°C)	32 A
Rated current, min. No. pins (Tu=40°C)	32 A
Rated voltage for overvoltage class/pollution severity II/2	320 V
Rated voltage for overvoltage class/pollution severity III/2	320 V
Rated voltage for overvoltage class/pollution severity III/3	320 V
Rated impulse withstand voltage for overvoltage class/pollution severity II/2	2.5 kV
Rated impulse withstand voltage for overvoltage class/pollution severity III/2	2.5 kV
Rated impulse withstand voltage for overvoltage class/pollution severity III/3	2.5 kV

#### CSA rating data

Rated voltage (Use group D)	300 V
Rated current (Use group D)	10 A
AWG conductor (field wiring), min.	26
AWG conductor (field wiring), max.	10

#### UL 1059 rating data

Rated voltage (Use group D)	300 V
Rated current (Use group D)	10 A
AWG conductor, min.	26
AWG conductor, max.	10



## Approvals

Approvals institutes



## Downloads

CAD Library (P-CAD Format - Standard) TOP 4GS.LIB

## Classifications

ETIM 2.0	NK
ETIM 3.0	EC001284
eClass 4.1	NK
eClass 5.0	NK
eClass 5.1	NK

## Similar products

Order No.	Part designation	Version
1401760000	TOP4GS2/90 6.35 OR	PCB terminal, TOP connection, Soldered connection, Clamping range, max.: 6 mm <sup>2</sup> , Pitch: 6.35 mm, No. of poles: 2, 90°, Box
1650300000	TOP4GS3/90 6.35 OR	PCB terminal, TOP connection, Soldered connection, Clamping range, max.: 6 mm <sup>2</sup> , Pitch: 6.35 mm, No. of poles: 3, 90°, Box
1786030000	TOP4GS4/90 6.35 OR	PCB terminal, TOP connection, Soldered connection, Clamping range, max.: 6 mm <sup>2</sup> , Pitch: 6.35 mm, No. of poles: 4, 90°, Box
1786040000	TOP4GS5/90 6.35 OR	PCB terminal, TOP connection, Soldered connection, Clamping range, max.: 6 mm <sup>2</sup> , Pitch: 6.35 mm, No. of poles: 5, 90°, Box
1786050000	TOP4GS6/90 6.35 OR	PCB terminal, TOP connection, Soldered connection, Clamping range, max.: 6 mm <sup>2</sup> , Pitch: 6.35 mm, No. of poles: 6, 90°, Box
1786060000	TOP4GS7/90 6.35 OR	PCB terminal, TOP connection, Soldered connection, Clamping range, max.: 6 mm <sup>2</sup> , Pitch: 6.35 mm, No. of poles: 7, 90°, Box
1667910000	TOP4GS8/90 6.35 OR	PCB terminal, TOP connection, Soldered connection, Clamping range, max.: 6 mm <sup>2</sup> , Pitch: 6.35 mm, No. of poles: 8, 90°, Box
1786070000	TOP4GS9/90 6.35 OR	PCB terminal, TOP connection, Soldered connection, Clamping range, max.: 6 mm <sup>2</sup> , Pitch: 6.35 mm, No. of poles: 9, 90°, Box
1786090000	TOP4GS11/90 6.35 OR	PCB terminal, TOP connection, Soldered connection, Clamping range, max.: 6 mm <sup>2</sup> , Pitch: 6.35 mm, No. of poles: 11, 90°, Box
1786100000	TOP4GS12/90 6.35 OR	PCB terminal, TOP connection, Soldered connection, Clamping range, max.: 6 mm <sup>2</sup> , Pitch: 6.35 mm, No. of poles: 12, 90°, Box