



Chipsmall Limited consists of a professional team with an average of over 10 year of expertise in the distribution of electronic components. Based in Hongkong, we have already established firm and mutual-benefit business relationships with customers from,Europe,America and south Asia,supplying obsolete and hard-to-find components to meet their specific needs.

With the principle of “Quality Parts,Customers Priority,Honest Operation,and Considerate Service”,our business mainly focus on the distribution of electronic components. Line cards we deal with include Microchip,ALPS,ROHM,Xilinx,Pulse,ON,Everlight and Freescale. Main products comprise IC,Modules,Potentiometer,IC Socket,Relay,Connector.Our parts cover such applications as commercial,industrial, and automotives areas.

We are looking forward to setting up business relationship with you and hope to provide you with the best service and solution. Let us make a better world for our industry!



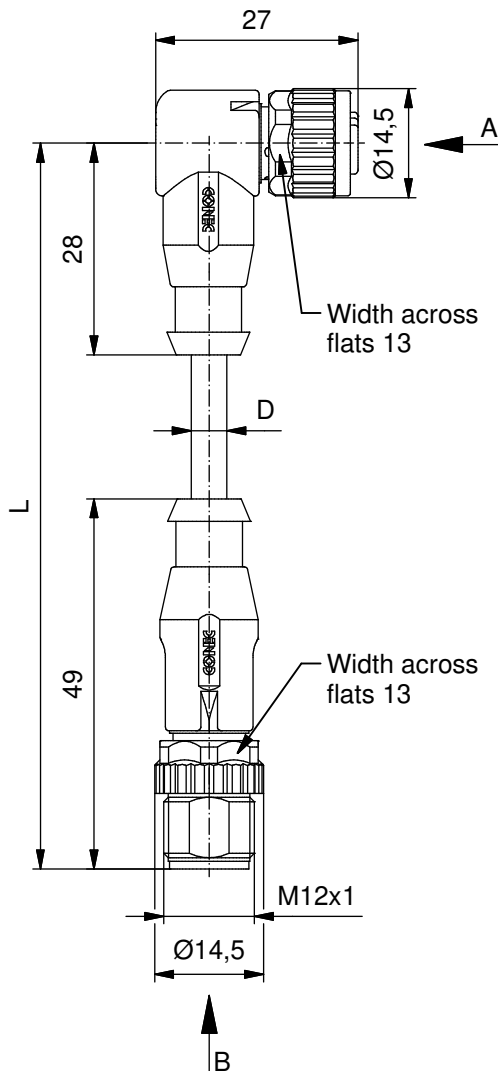
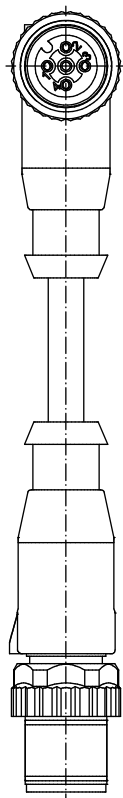
Contact us

Tel: +86-755-8981 8866 Fax: +86-755-8427 6832

Email & Skype: info@chipsmall.com Web: www.chipsmall.com

Address: A1208, Overseas Decoration Building, #122 Zhenhua RD., Futian, Shenzhen, China





Technical specification:

Rated voltage:	4pos
IEC 61076-2-101	30 V
Current rating:	4 A at 40°C
IEC 61076-2-101	
Insulation resistance:	>=100 MΩ
IEC 60512	
Pollution degree:	3/2
IEC 60664-1	
Degree of protection:	IP 67, in mated condition
IEC 60529	
Temperature range:	-30°C ... +80°C
IEC 60664-1	
Mating cycles:	>=100
IEC 60512-9a	

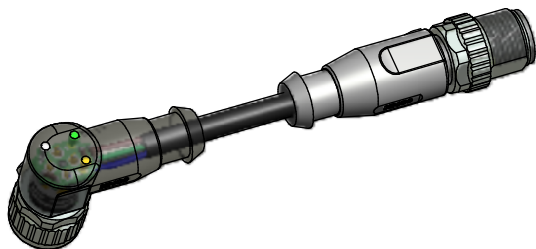
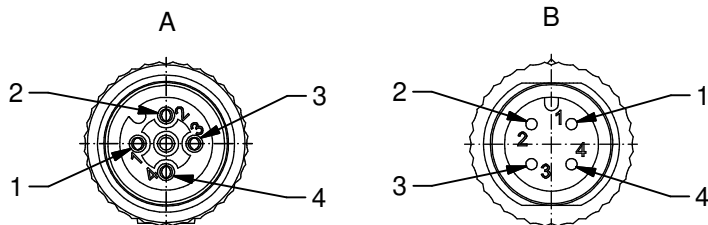
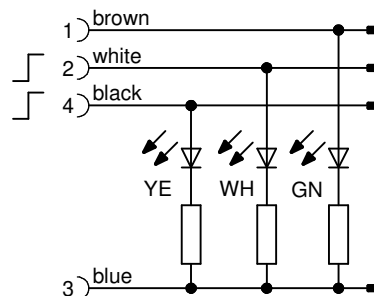
Materials:

Contact:	CuZn
Contact plating:	Nickel, gold plated
Contact carrier:	TPU GF, UL 94
Sealing:	FPM
Coupling nut/ screw:	GD-Zn, nickel plated
Moulding body axial:	TPU, UL 94, grey
Moulding body angled:	TPU, UL 94, translucent

Installation specification:

Recommended torque:	0,6 Nm
Conec installation tool:	Torque wrench: 36-000200 Insert across flats 13: 36-000220

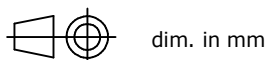
Contact assignment:



Part no:	Description:	Length L:	Cable:
43-10840	SAL - 12 - RKW4 - RS4 - 3L - 0,3 / K1	0,3m	TPU, UL 20549, black, 4x0,34mm² Cable: 781-K13400
43-10841	SAL - 12 - RKW4 - RS4 - 3L - 0,6 / K1	0,6m	
43-10842	SAL - 12 - RKW4 - RS4 - 3L - 1,5 / K1	1,5m	
43-10843	SAL - 12 - RKW4 - RS4 - 3L - 3 / K1	3m	
43-xxxxx	SAL - 12 - RKW4 - RS4 - 3L - ... / K1	x	

D see data sheet cable

DO NOT ALTER CAD DRAWING BY HAND	Directive 2002/95/EC RoHS compliant	Index: a 01.02.11 VF Ä3767 Coupling nut/ screw modified, spanner flats added, data sheet modified
		tolerance of cable: L ≤ 4m: L + 40mm L > 4m: L + 1%
		THIS DRAWING MAY NOT BE COPIED OR REPRODUCED IN ANY WAY, AND MAY NOT BE PASSED ON TO A THIRD PARTY WITHOUT WRITTEN PERMISSION. OWNERSHIP AND COPYRIGHT OF CONEC GmbH



	date	name
drawn	14.03.07	Fromm
appd.	14.03.07	Mankopf



title:
Connecting cable M12x1, female connector angled with LED - male connector axial

dwg no:

43K1A463

part no:

see table