



Chipsmall Limited consists of a professional team with an average of over 10 year of expertise in the distribution of electronic components. Based in Hongkong, we have already established firm and mutual-benefit business relationships with customers from,Europe,America and south Asia,supplying obsolete and hard-to-find components to meet their specific needs.

With the principle of “Quality Parts,Customers Priority,Honest Operation,and Considerate Service”,our business mainly focus on the distribution of electronic components. Line cards we deal with include Microchip,ALPS,ROHM,Xilinx,Pulse,ON,Everlight and Freescale. Main products comprise IC,Modules,Potentiometer,IC Socket,Relay,Connector.Our parts cover such applications as commercial,industrial, and automotives areas.

We are looking forward to setting up business relationship with you and hope to provide you with the best service and solution. Let us make a better world for our industry!



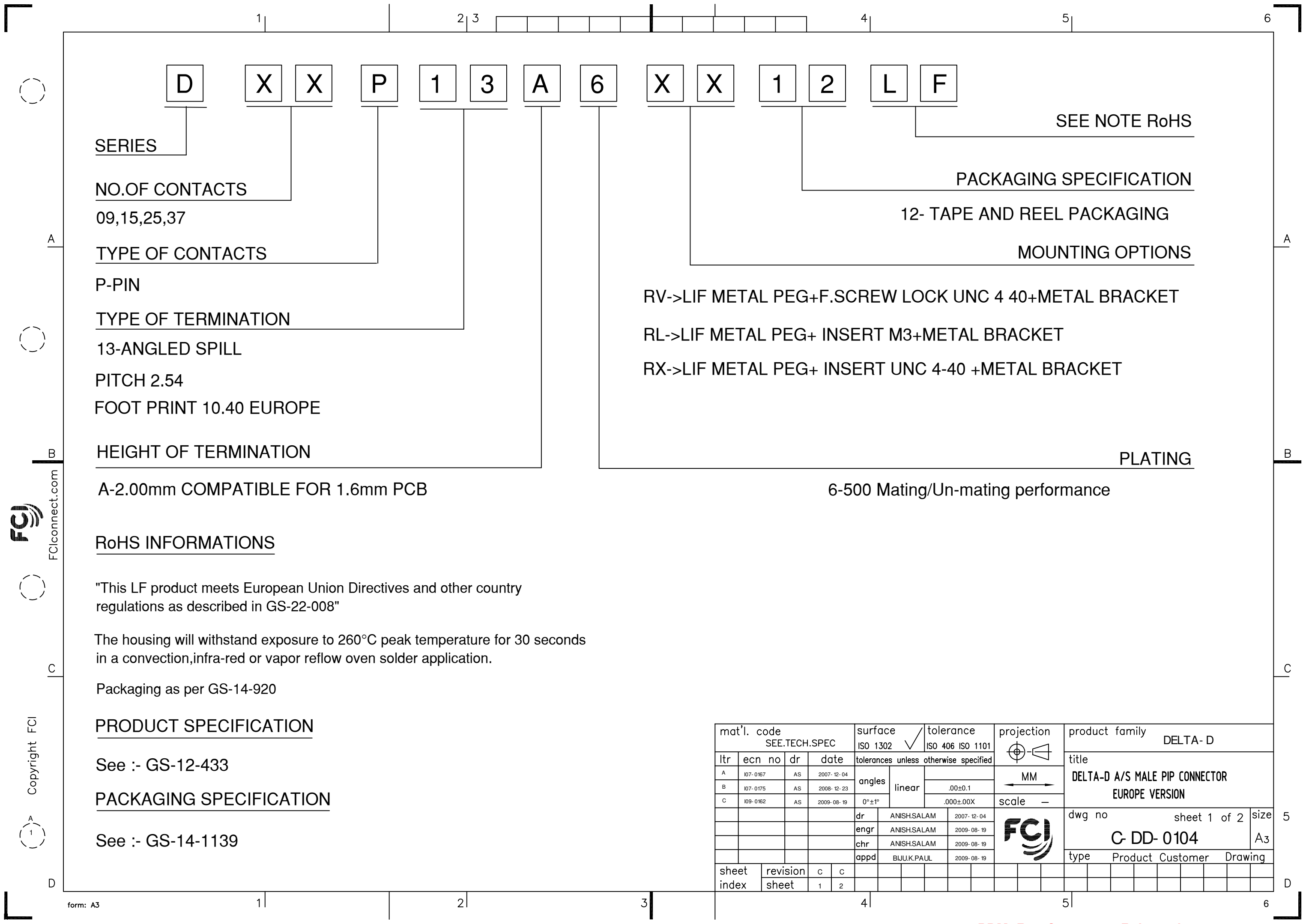
Contact us

Tel: +86-755-8981 8866 Fax: +86-755-8427 6832

Email & Skype: info@chipsmall.com Web: www.chipsmall.com

Address: A1208, Overseas Decoration Building, #122 Zhenhua RD., Futian, Shenzhen, China





D

X

X

P

1

3

A

6

X

X

1

2

L

F

SERIES

NO.OF CONTACTS

09,15,25,37

TYPE OF CONTACTS

P-PIN

TYPE OF TERMINATION

13-ANGLED SPILL

PITCH 2.54

FOOT PRINT 10.40 EUROPE

HEIGHT OF TERMINATION

A-2.00mm COMPATIBLE FOR 1.6mm PCB

RoHS INFORMATIONS

"This LF product meets European Union Directives and other country regulations as described in GS-22-008"

The housing will withstand exposure to 260°C peak temperature for 30 seconds in a convection,infra-red or vapor reflow oven solder application.

Packaging as per GS-14-920

PRODUCT SPECIFICATION

See :- GS-12-433

PACKAGING SPECIFICATION

See :- GS-14-1139

SEE NOTE RoHS

PACKAGING SPECIFICATION

12- TAPE AND REEL PACKAGING

MOUNTING OPTIONS

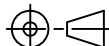


RV->LIF METAL PEG+F.SCREW LOCK UNC 4 40+METAL BRACKET

RL->LIF METAL PEG+ INSERT M3+METAL BRACKET

RX->LIF METAL PEG+ INSERT UNC 4-40 +METAL BRACKET

PLATING

6-500 Mating/Un-mating performance

mat'l. code SEE.TECH.SPEC				surface ISO 1302 ✓			tolerance ISO 406 ISO 1101			projection 			product family DELTA- D					
ltr	ecn no	dr	date	tolerances unless otherwise specified									title DELTA-D A/S MALE PIP CONNECTOR EUROPE VERSION					
A	107- 0167	AS	2007- 12- 04	angles	linear													
B	107- 0175	AS	2008- 12- 23			.00±0.1												
C	109- 0162	AS	2009- 08- 19			.000±.00X												
				0°±1°					scale —			dwg no G- DD- 0104 sheet 1 of 2 size A3						
				dr		ANISH.SALAM		2007- 12- 04										
				engr		ANISH.SALAM		2009- 08- 19										
				chr		ANISH.SALAM		2009- 08- 19										
				appd		BIJU.K.PAUL		2009- 08- 19					type Product Customer Drawing					
sheet index		revision sheet		c	c													
				1	2													

FCI
FCIconnect.com
Copyright FCI
A
1
D

