



Chipsmall Limited consists of a professional team with an average of over 10 year of expertise in the distribution of electronic components. Based in Hongkong, we have already established firm and mutual-benefit business relationships with customers from,Europe,America and south Asia,supplying obsolete and hard-to-find components to meet their specific needs.

With the principle of “Quality Parts,Customers Priority,Honest Operation,and Considerate Service”,our business mainly focus on the distribution of electronic components. Line cards we deal with include Microchip,ALPS,ROHM,Xilinx,Pulse,ON,Everlight and Freescale. Main products comprise IC,Modules,Potentiometer,IC Socket,Relay,Connector.Our parts cover such applications as commercial,industrial, and automotives areas.

We are looking forward to setting up business relationship with you and hope to provide you with the best service and solution. Let us make a better world for our industry!



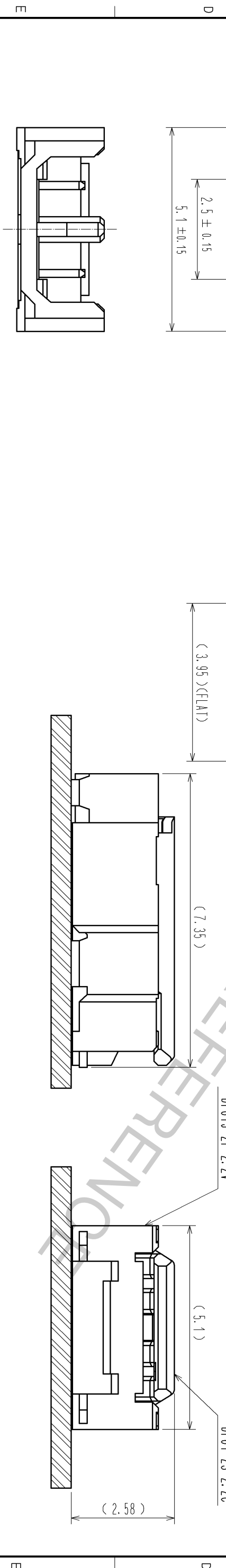
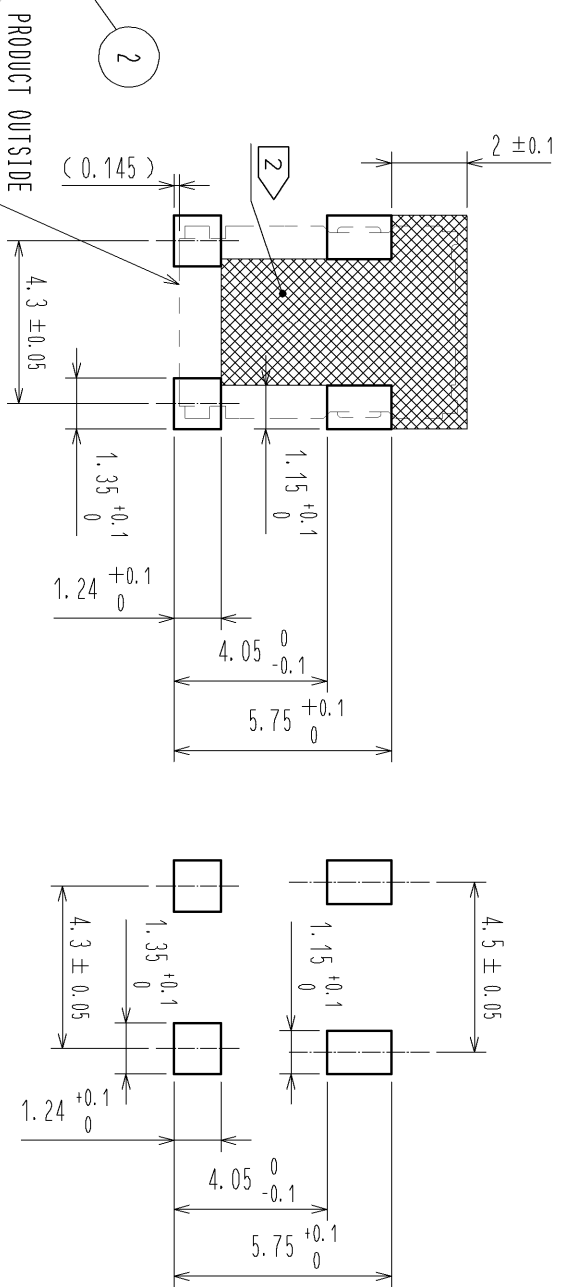
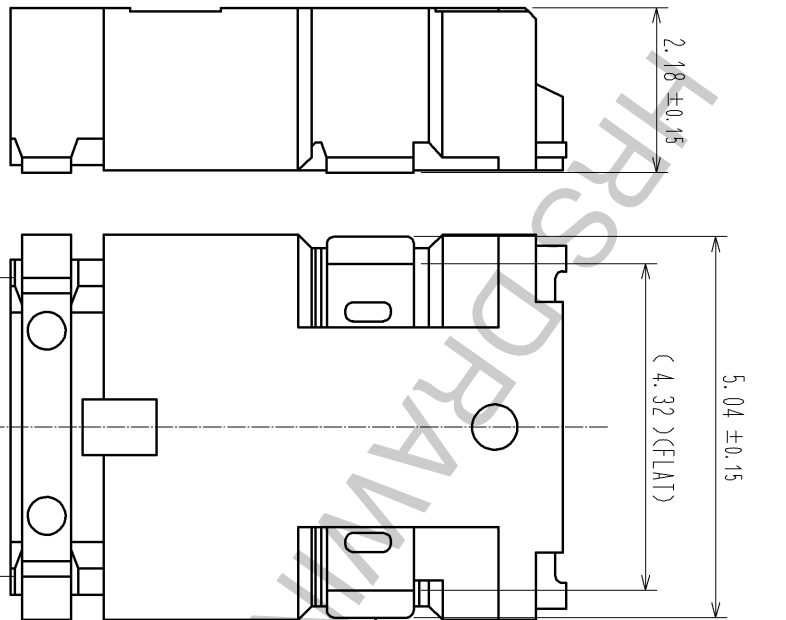
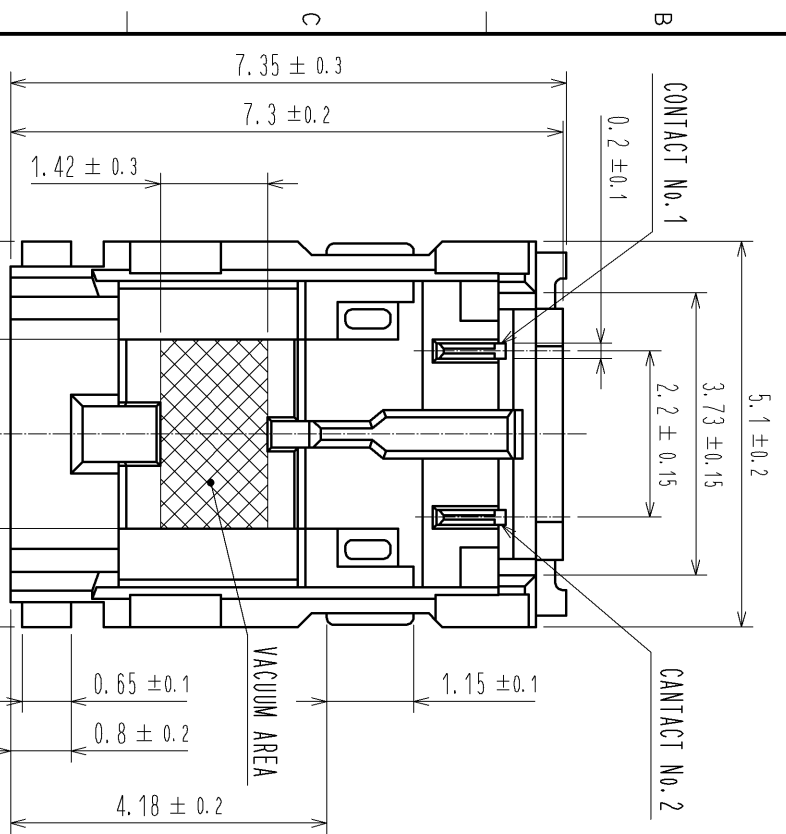
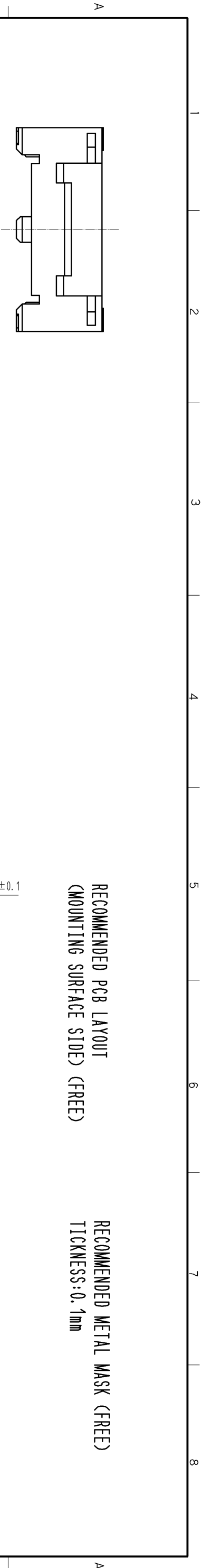
Contact us

Tel: +86-755-8981 8866 Fax: +86-755-8427 6832

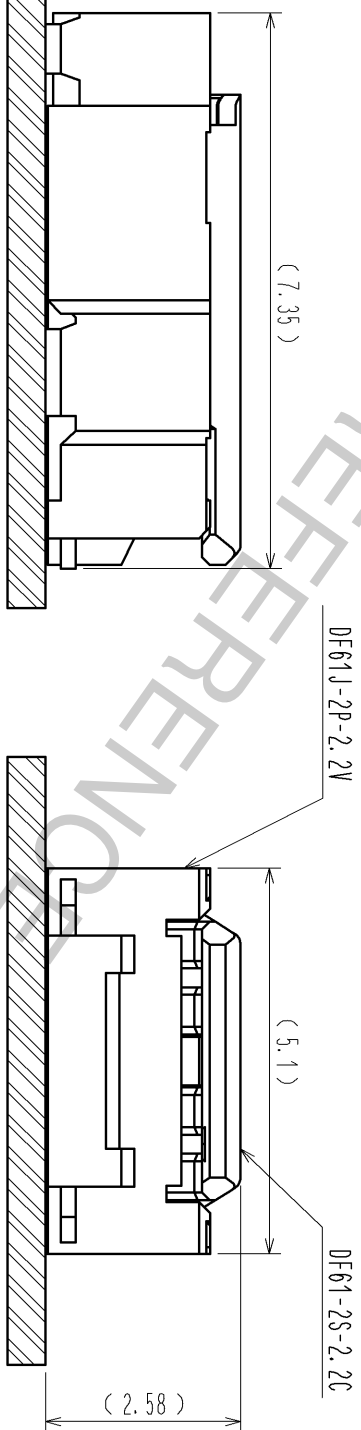
Email & Skype: info@chipsmall.com Web: www.chipsmall.com

Address: A1208, Overseas Decoration Building, #122 Zhenhua RD., Futian, Shenzhen, China



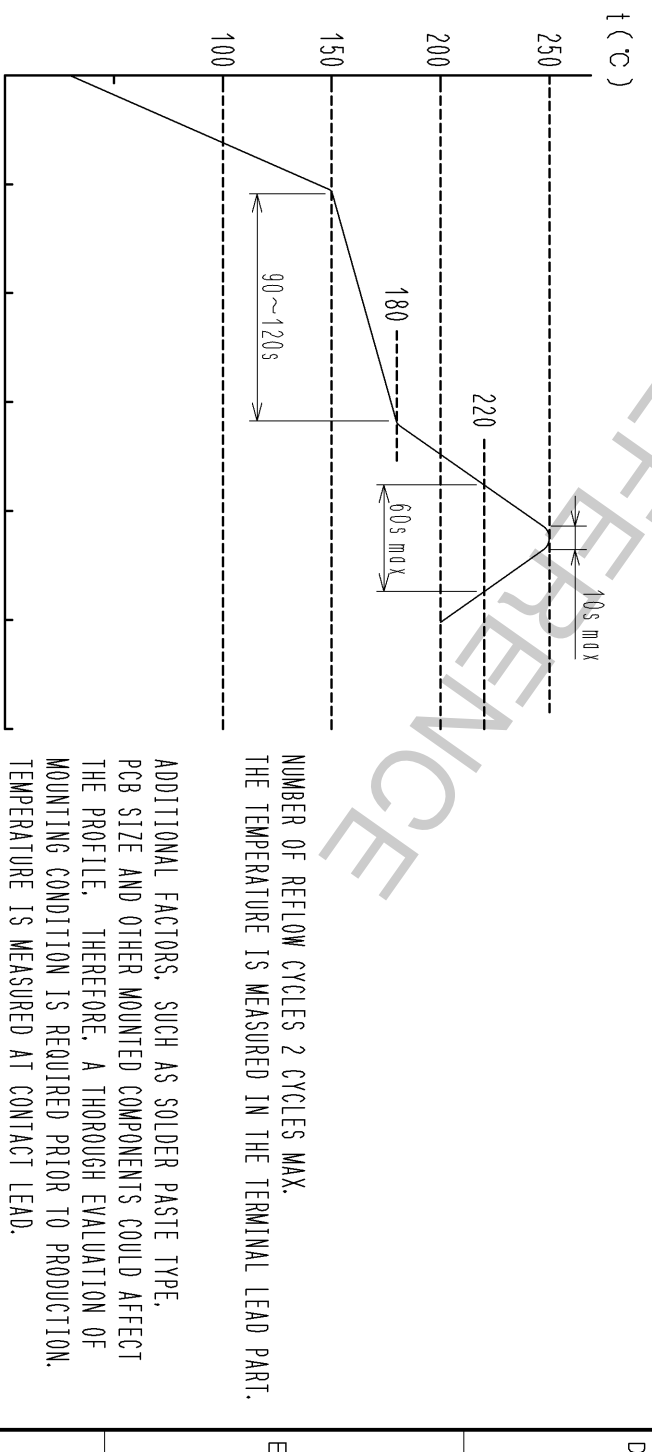
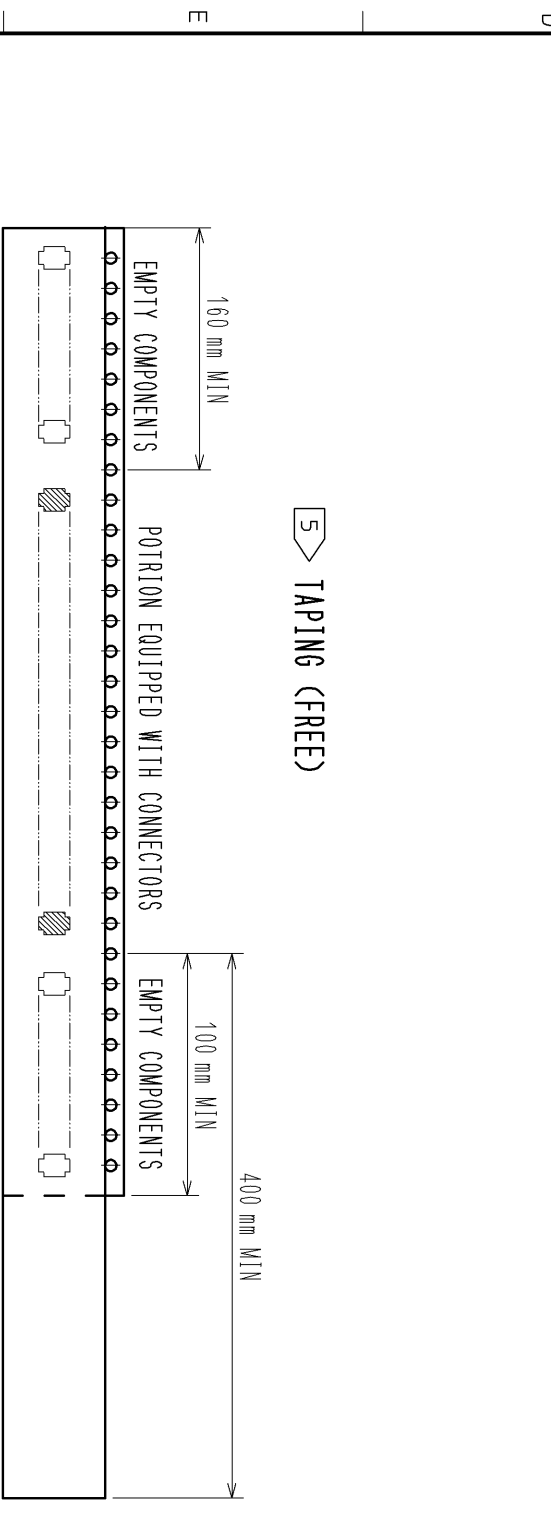
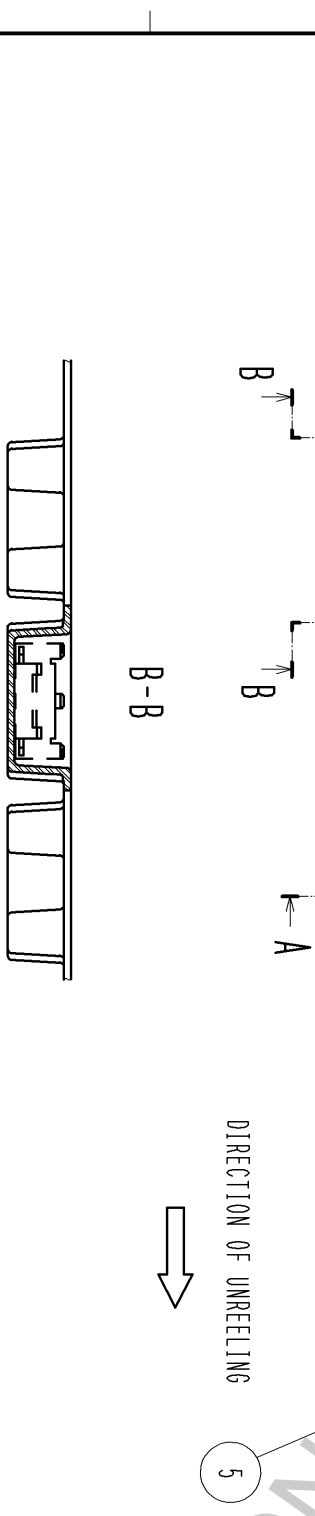
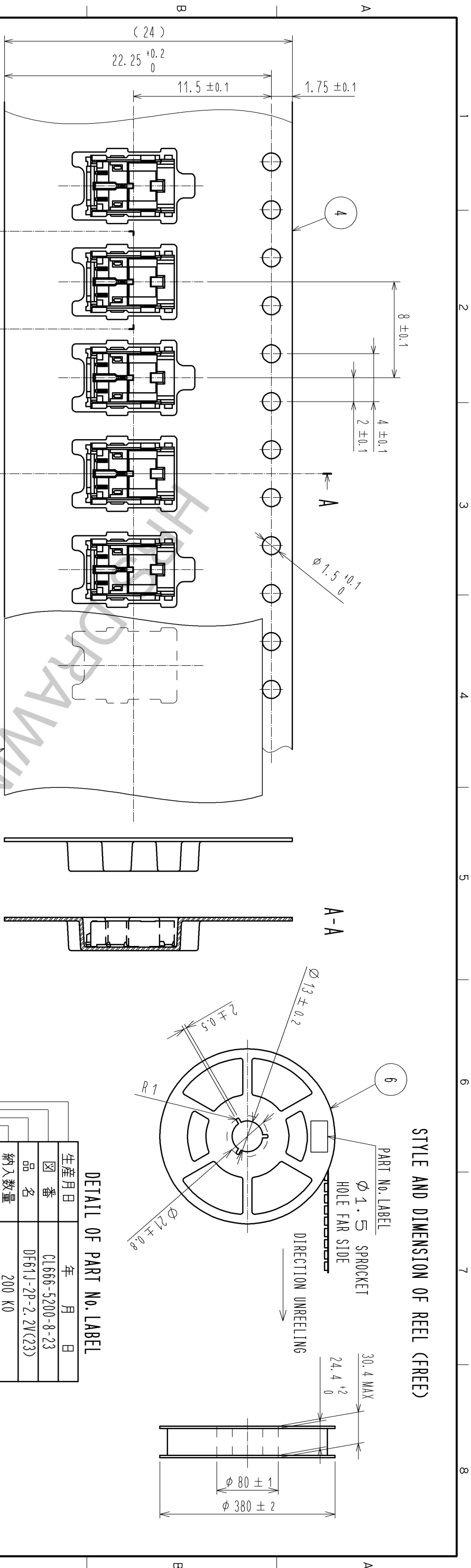


MATING FIGURE (FREE)



NOTE1. LEAD CO-PLANARITY SHALL BE 0.1mmMAX
AND ARRANGE NO CONDUCTIVE TRACE OR RESIST COVERAGE IF NECESSARY.
3. PLEASE CONSULT HIROSE WHEN THE PRODUCT IS MOUNTED TO FPC.

3	BRASS	SURFACE:TIN PLATING 1μmMIN UNDER PLATING:NICKEL PLATING 0.5μmMIN	6	PS	REEL, BLACK		
2	BRASS	SURFACE:TIN PLATING 1μmMIN UNDER PLATING:NICKEL PLATING 0.5μmMIN	5	POLYESTER	CLEARCOVER TAPE)		
1	LCP	UP94V-0, BEIGE	4	PS	CLEARCROSSSED CARRIER TAPE)		
NO.	MATERIAL	FINISH .	REMARKS	NO.	MATERIAL	FINISH .	REMARKS
UNITS	mm	SCALE	COUNT	DESCRIPTION OF REVISIONS	DESIGNED	CHECKED	DATE
10 : 1							
APPROVED : K.I. AKIYAMA	13. 04. 22	DRAWING	EDC3-350856-01				
CHECKED : HK. UMEHARA	13. 04. 22	PART	DF61J-2P-2. 2V(23)				
DESIGNED : ST. SATO	13. 04. 19	CODE	CL666-5200-8-23				
DRAWN : ST. SATO	13. 04. 19	NO.					



NOTE4. 1 REEL : 200 CONNECTORS

5 REEL TO JIS C 0806. (PACKAGING OF COMPONENTS FOR AUTOMATIC HANDLING)

6. THE DIMENSIONS IN PARENTHESES ARE FOR REFERENCE.

DETAIL OF PART No. LABEL

生産月日	年	月	日
図 番	CL666-5200-8-23		
品 名	DF61J-2P-2.2V(23)		
納入数量	200 K0		
納入者	ヒロセ電機 (株)		

SUPPLIER

QUANTITY

PART No.

CODE No.

DATE OF MANUFACTURED

NUMBER OF REFLOW CYCLES 2 CYCLES MAX.

THE TEMPERATURE IS MEASURED IN THE TERMINAL LEAD PART.

ADDITIONAL FACTORS, SUCH AS SOLDER PASTE TYPE, PCB SIZE AND OTHER MOUNTED COMPONENTS COULD AFFECT THE PROFILE. THEREFORE, A THOROUGH EVALUATION OF MOUNTING CONDITION IS REQUIRED PRIOR TO PRODUCTION. TEMPERATURE IS MEASURED AT CONTACT LEAD.

FORM HC0011-5-8-AN

1 2 3 4 5 6 7 8

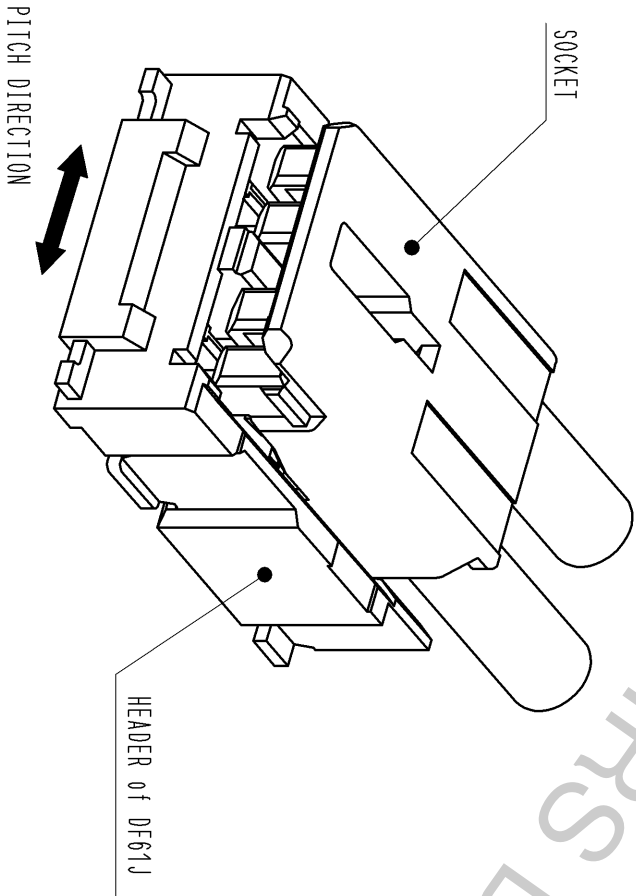
HR5

DRAWING NO.	EDC3-350856-01
PART NO.	DF61J-2P-2.2V(23)
CODE	CL666-5200-8-23

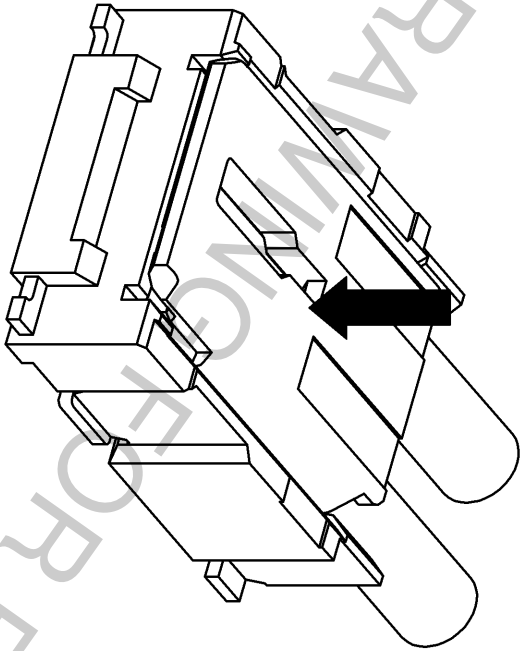
2/3

Test Instruction by DF61J Series

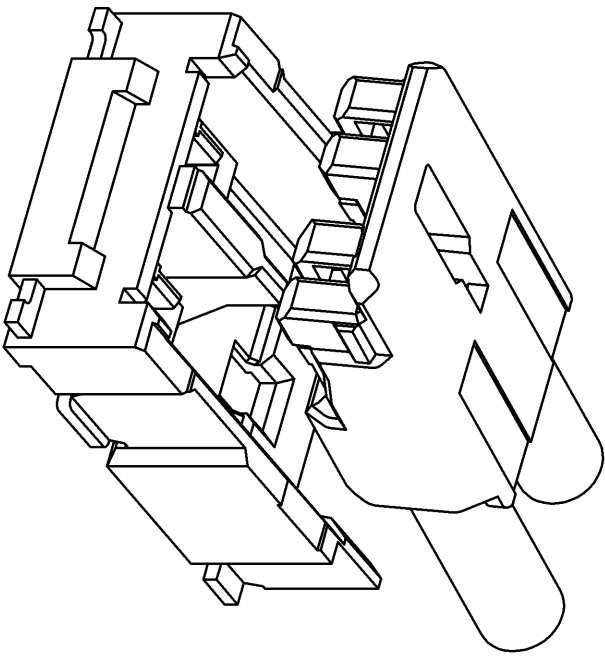
① By positioning the convexity of the socket sides to the header concavity, align the centers of the socket and the header in pitch direction.



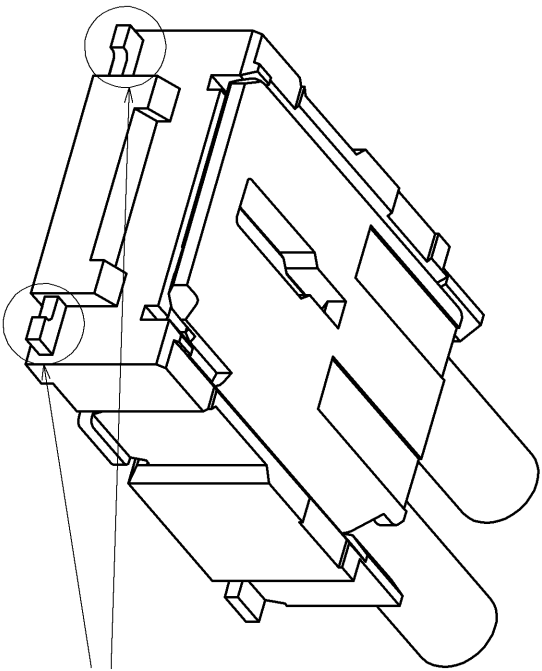
② Press the socket down for mating. Keep pressing the socket to avoid unmating while testing.



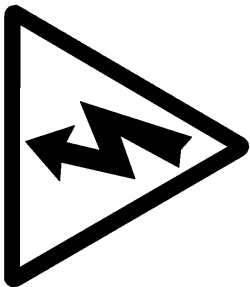
③ Remove the socket.



ELECTRICAL SHOCK HAZARD



DO NOT TOUCH THIS PART !



DRAWING NO.		EDC3-350856-01
PART NO.		DF61J-2P-2.2V(23)
CODE NO.		CL666-5200-8-23
		△ 3/3