



Chipsmall Limited consists of a professional team with an average of over 10 year of expertise in the distribution of electronic components. Based in Hongkong, we have already established firm and mutual-benefit business relationships with customers from,Europe,America and south Asia,supplying obsolete and hard-to-find components to meet their specific needs.

With the principle of “Quality Parts,Customers Priority,Honest Operation,and Considerate Service”,our business mainly focus on the distribution of electronic components. Line cards we deal with include Microchip,ALPS,ROHM,Xilinx,Pulse,ON,Everlight and Freescale. Main products comprise IC,Modules,Potentiometer,IC Socket,Relay,Connector.Our parts cover such applications as commercial,industrial, and automotives areas.

We are looking forward to setting up business relationship with you and hope to provide you with the best service and solution. Let us make a better world for our industry!



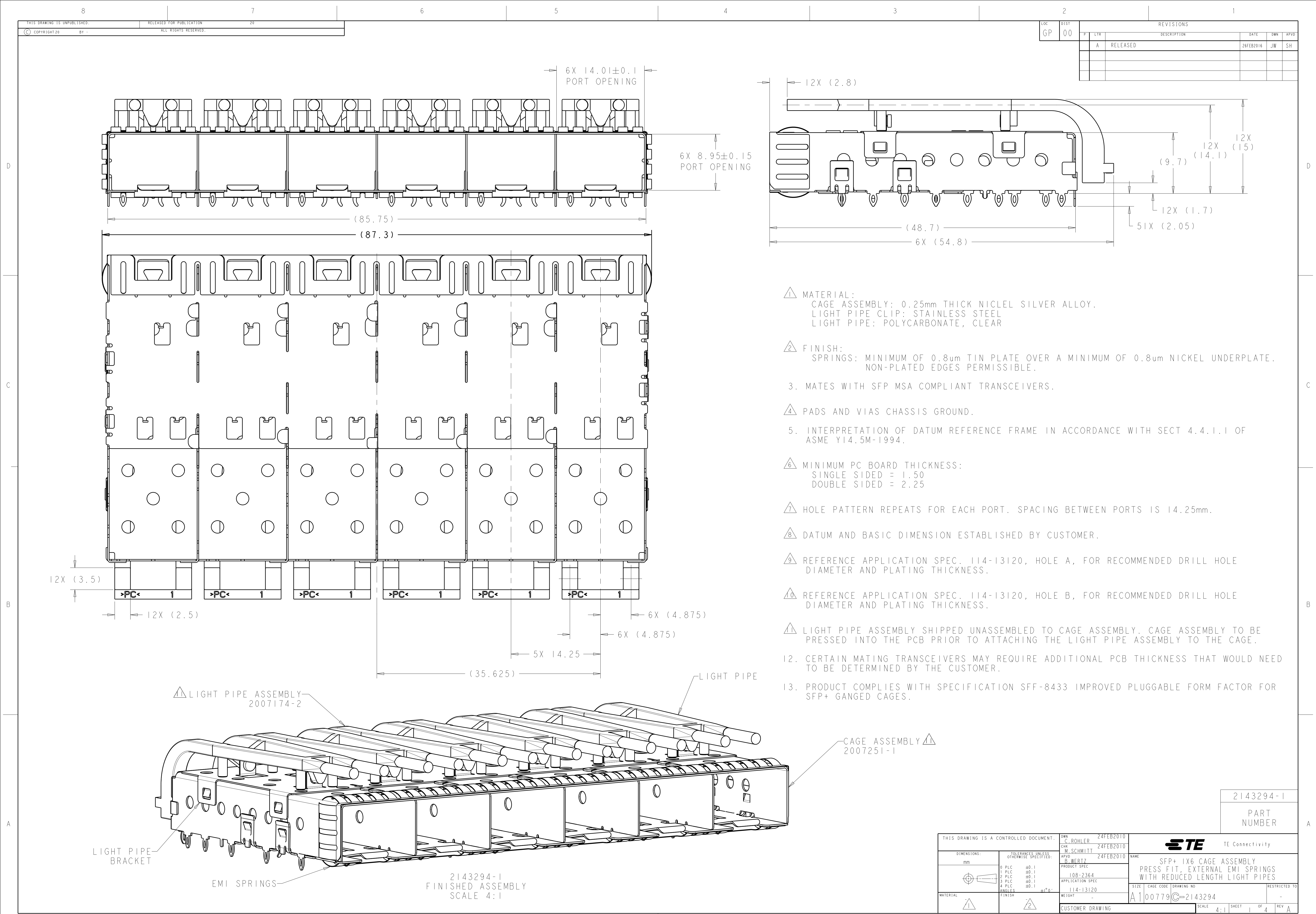
Contact us

Tel: +86-755-8981 8866 Fax: +86-755-8427 6832

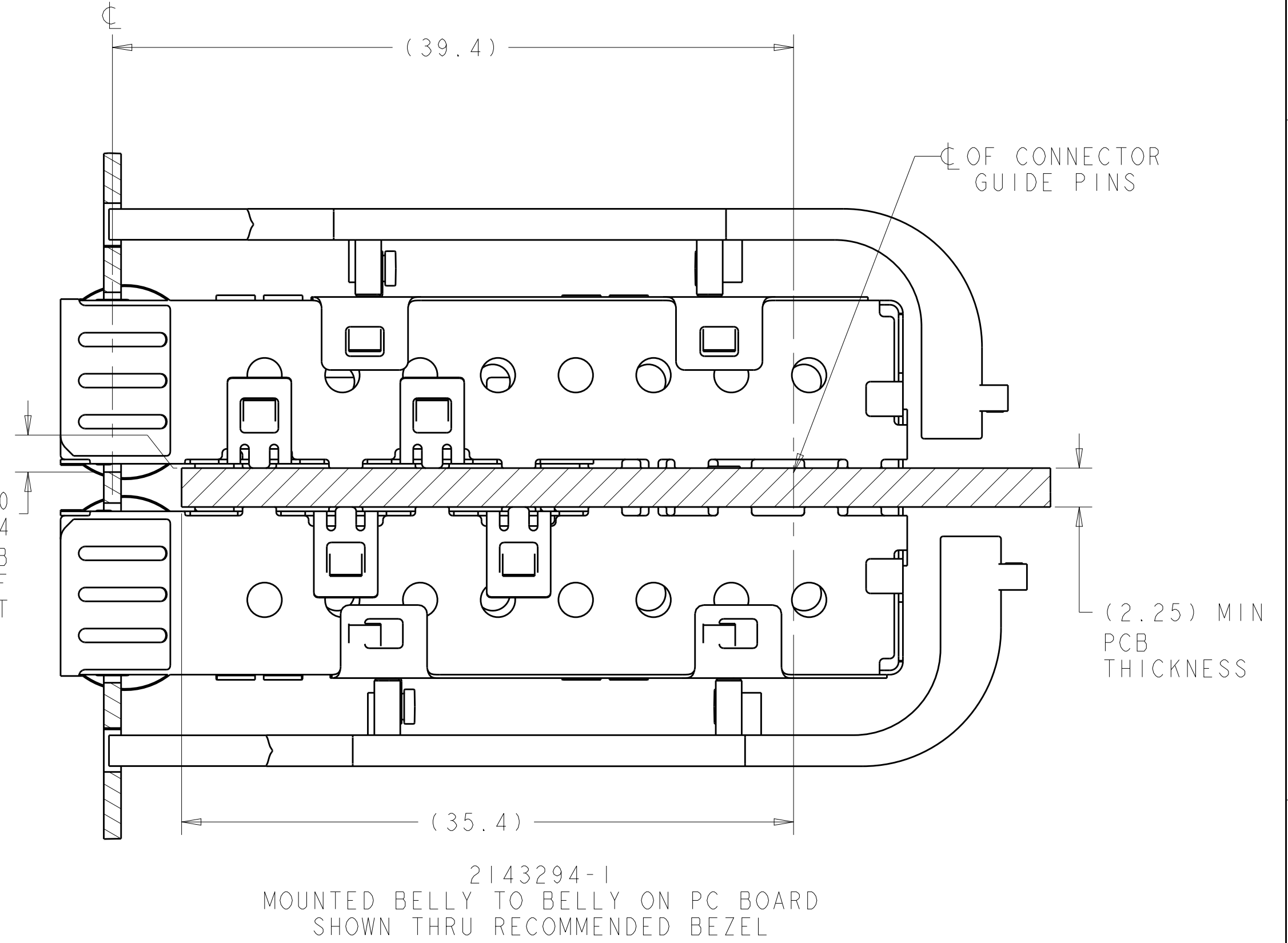
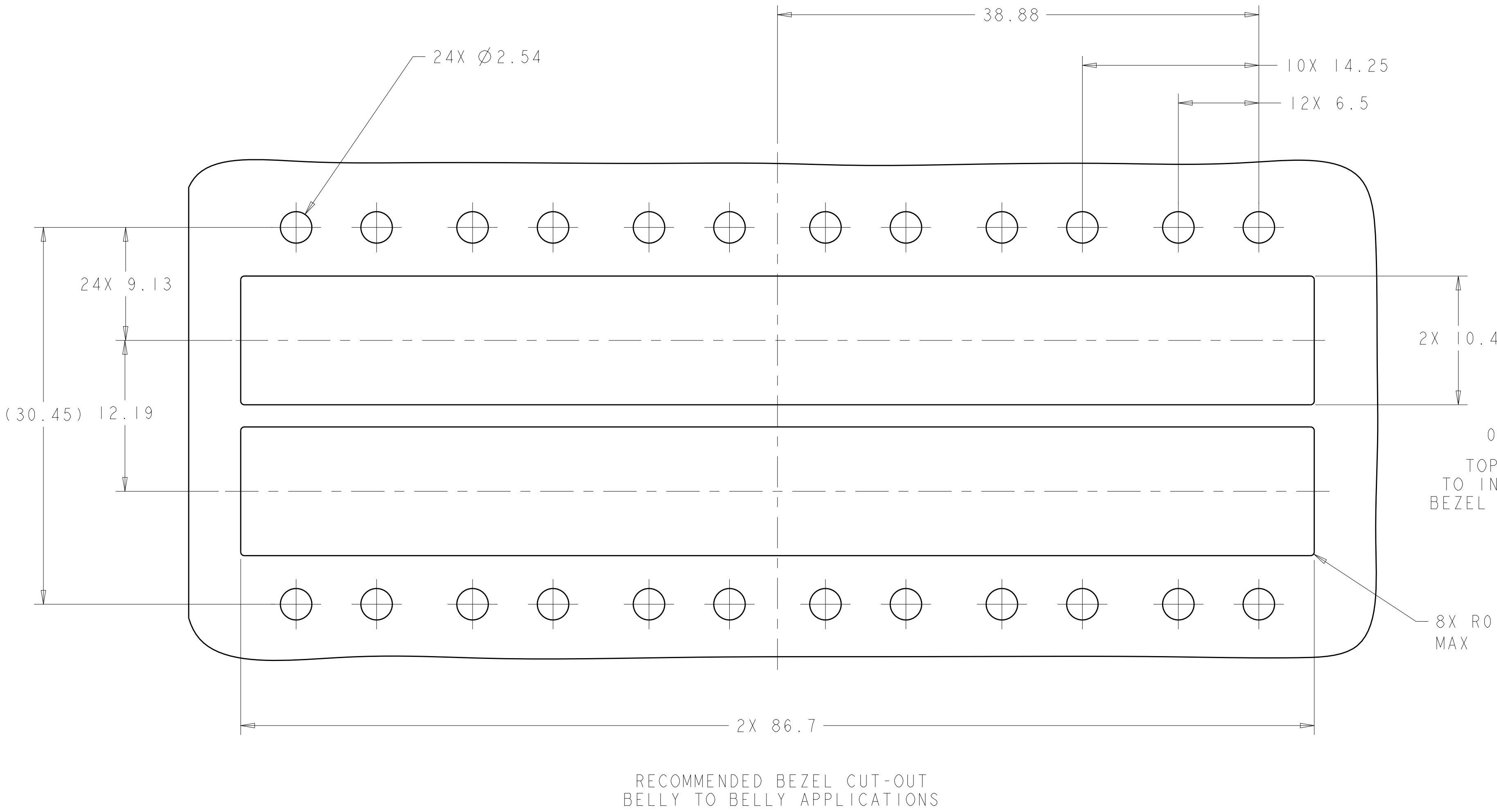
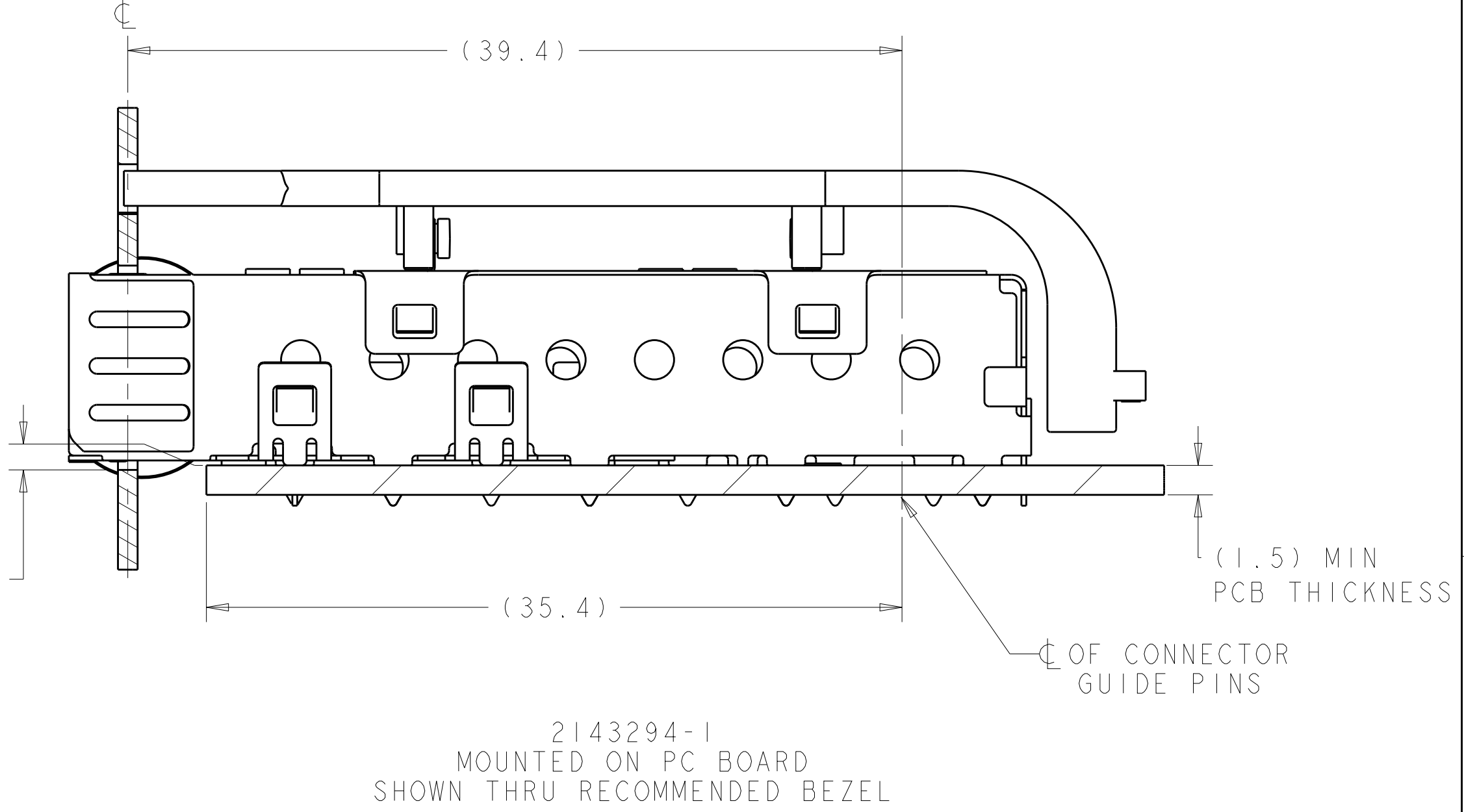
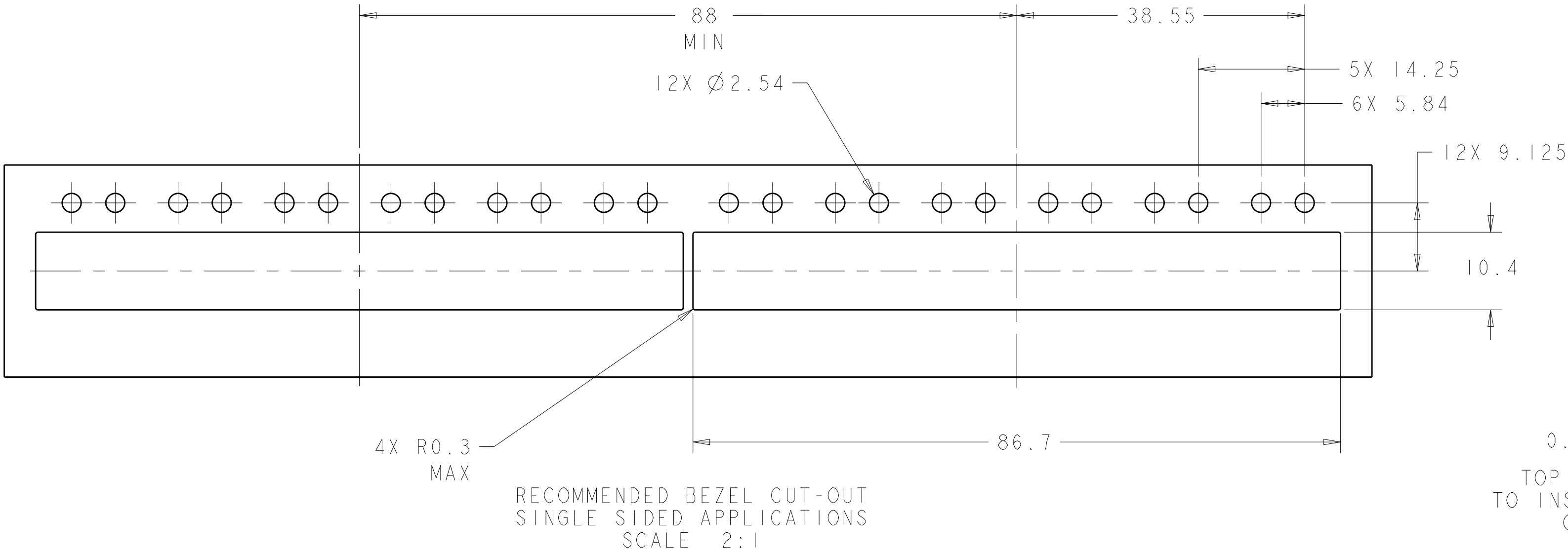
Email & Skype: info@chipsmall.com Web: www.chipsmall.com



Address: A1208, Overseas Decoration Building, #122 Zhenhua RD., Futian, Shenzhen, China

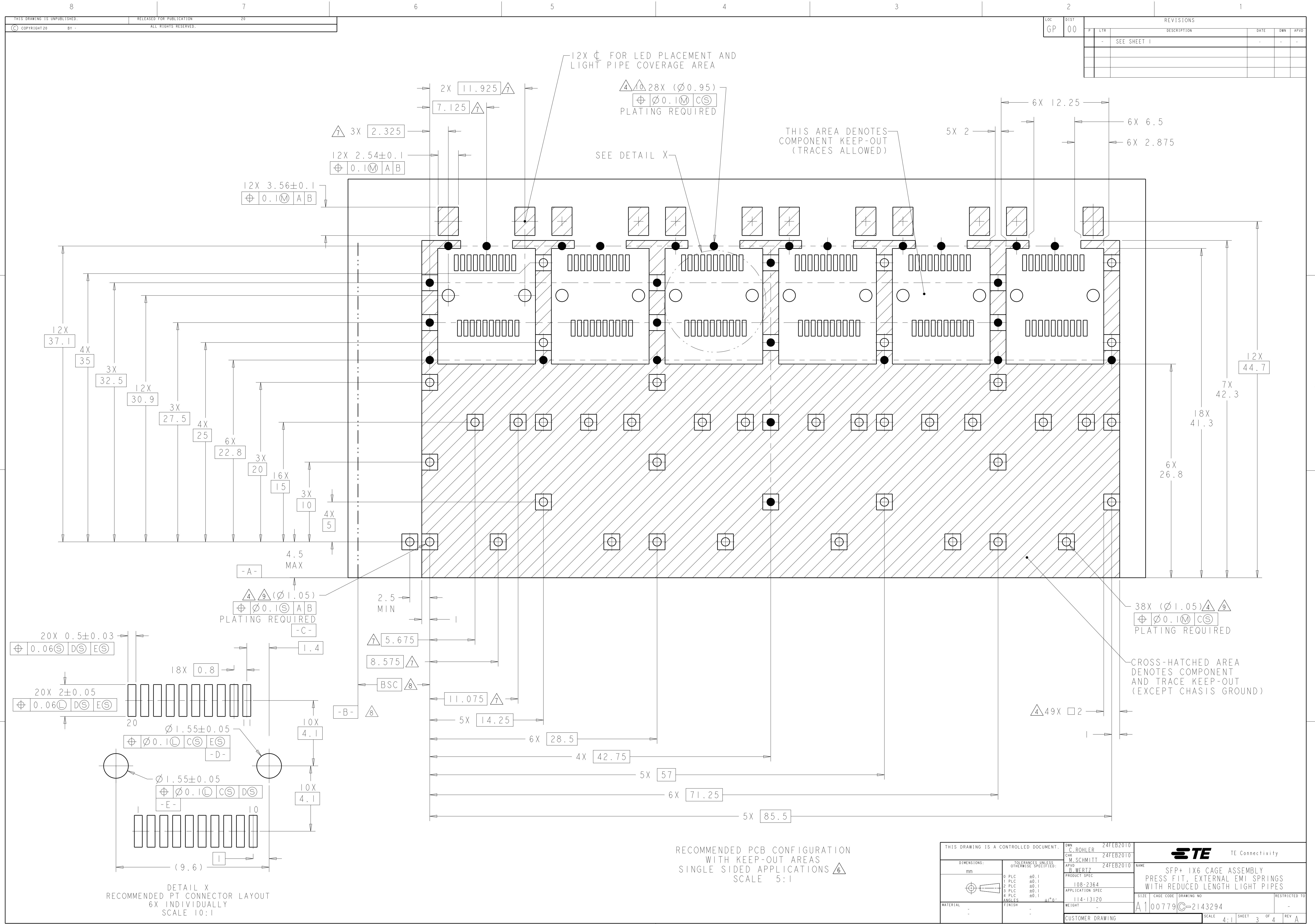




LOC		DIST		REVISIONS			
GP				P	LTR	DESCRIPTION	DATE
				-		SEE SHEET 1	-



THIS DRAWING IS A CONTROLLED DOCUMENT.		DWN C. ROHLER	24FEB2010	 TE Connectivity	
DIMENSIONS:		CHK M. SCHMITT	24FEB2010		
mm	TOLERANCES UNLESS OTHERWISE SPECIFIED:	APVD B. WERTZ	24FEB2010	NAME	
	0 PLC	±0.1	PRODUCT SPEC	SFP+ 1X6 CAGE ASSEMBLY PRESS FIT, EXTERNAL EMI SPRINGS WITH REDUCED LENGTH LIGHT PIPES	
	1 PLC	±0.1	108-2364		
	2 PLC	±0.1	APPLICATION SPEC		
	3 PLC	±0.1	114-13120		
MATERIAL		FINISH	WEIGHT	SIZE	CAGE CODE
				A1	00779
				C=2143294	
				CUSTOMER DRAWING	
				SCALE	4:1
				SHEET	2
				OF	4
				REV	A



LOC	DIST	REVISIONS					
		P	LTR	DESCRIPTION	DATE	DWN	APVD
GP	00	-	-	SEE SHEET 1	-	-	-

