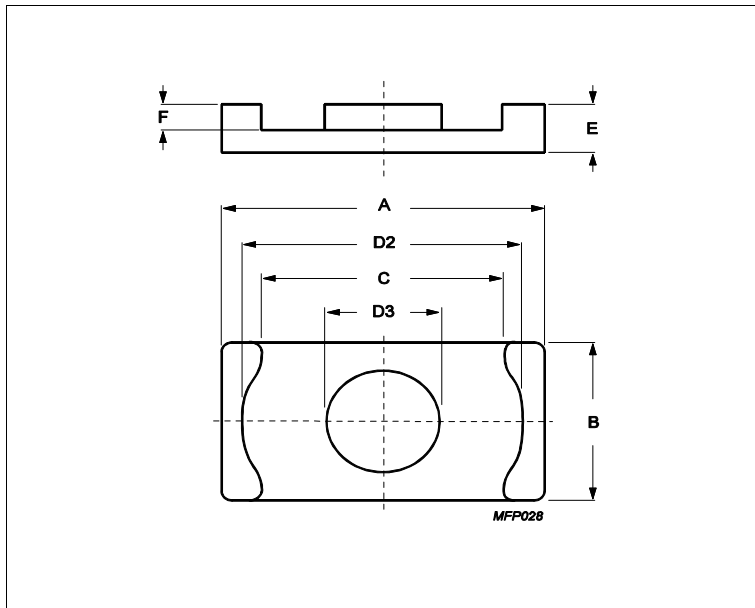


## Core **ER11/2.5/6**



Effective parameters			
	Parameter	Value	Unit
$\Sigma(I/A)$	core factor (C1)	1.23	mm <sup>-1</sup>
<b>Ve</b>	effective volume	174	mm <sup>3</sup>
<b>Le</b>	effective length	14.7	mm
<b>Ae</b>	effective area	11.9	mm <sup>2</sup>
<b>Amin</b>	minimum area	10.3	mm <sup>2</sup>
<b>m</b>	ER11/2.5/6	≈ 0.5	g/pcs

**Dimensions for product: ER11/2.5/6**

	Nom	Tol +	Tol -	Max	Min	Unit
<b>A</b>	11.00	0.00	0.35	11.00	10.65	mm
<b>B</b>	6.00	0.00	0.20	6.00	5.80	mm
<b>C</b>	8.00	0.20	0.00	8.20	8.00	mm
<b>D2</b>	8.70	0.30	0.00	9.00	8.70	mm
<b>D3</b>	4.25	0.00	0.25	4.25	4.00	mm
<b>E</b>	2.45	0.05	0.05	2.50	2.40	mm
<b>F</b>	1.50	0.15	0.00	1.65	1.50	mm

**Inductance factor**

Material	Value	Tol +	Tol -	Unit
3C92	1050	25%	25%	nH/turns <sup>2</sup>
3C95	1620	25%	25%	nH/turns <sup>2</sup>
3C96	1250	25%	25%	nH/turns <sup>2</sup>
3C97	1620	25%	25%	nH/turns <sup>2</sup>
3F36	920	25%	25%	nH/turns <sup>2</sup>
3F46	610	25%	25%	nH/turns <sup>2</sup>

**Power loss: 3C92**

Measuring conditions			Max	Unit
100 kHz	200 mT	100 °C	0.087	W/set

**Power loss: 3C95**

Measuring conditions			Max	Unit
100 kHz	200 mT	100 °C	0.084	W/set
100 kHz	200 mT	25 °C	0.090	W/set

## Core **ER11/2.5/6**

Power loss: 3C96				
Measuring conditions			Max	Unit
100 kHz	200 mT	100 °C	0.078	W/set
400 kHz	50 mT	100 °C	0.031	W/set
Power loss: 3C97				
Measuring conditions			Max	Unit
100 kHz	200 mT	60 °C	0.087	W/set
100 kHz	200 mT	120 °C	0.084	W/set
100 kHz	200 mT	140 °C	0.100	W/set
Power loss: 3F36				
Measuring conditions			Max	Unit
500 kHz	50 mT	100 °C	0.026	W/set
500 kHz	100 mT	100 °C	0.200	W/set
Power loss: 3F46				
Measuring conditions			Max	Unit
1000 kHz	50 mT	100 °C	0.070	W/set
3000 kHz	10 mT	100 °C	0.015	W/set

Bsat					
Measuring conditions			Material	Min	Unit
25 kHz	250 A/m	100 °C	3C92	370	mT
25 kHz	250 A/m	100 °C	3C95	330	mT
25 kHz	250 A/m	100 °C	3C96	340	mT
25 kHz	250 A/m	100 °C	3C97	330	mT
25 kHz	250 A/m	100 °C	3F36	340	mT
25 kHz	250 A/m	100 °C	3F46	330	mT

Accessories		
Ordering name	Description	Ordering code
CLM-ER11	Clamp	432202101531
CPVS-ER11-1S-10P-Z	Coil former, termoplastic, vertical, SMD	432202106141
CPVS-ER11-1S-12P-Z	Coil former, termoplastic, vertical, SMD	432202107261