



Chipsmall Limited consists of a professional team with an average of over 10 year of expertise in the distribution of electronic components. Based in Hongkong, we have already established firm and mutual-benefit business relationships with customers from,Europe,America and south Asia,supplying obsolete and hard-to-find components to meet their specific needs.

With the principle of “Quality Parts,Customers Priority,Honest Operation,and Considerate Service”,our business mainly focus on the distribution of electronic components. Line cards we deal with include Microchip,ALPS,ROHM,Xilinx,Pulse,ON,Everlight and Freescale. Main products comprise IC,Modules,Potentiometer,IC Socket,Relay,Connector.Our parts cover such applications as commercial,industrial, and automotives areas.

We are looking forward to setting up business relationship with you and hope to provide you with the best service and solution. Let us make a better world for our industry!



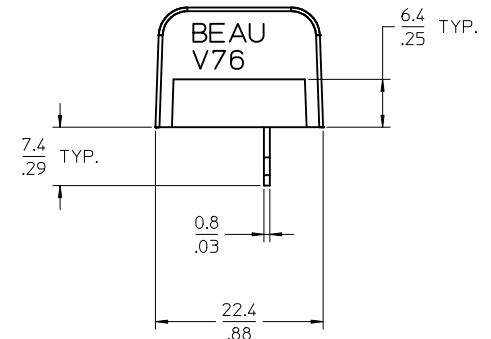
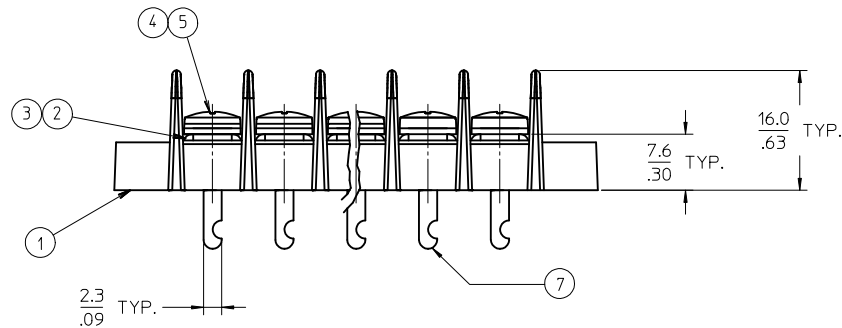
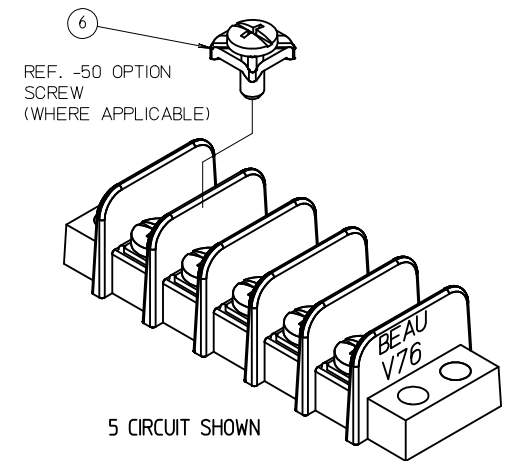
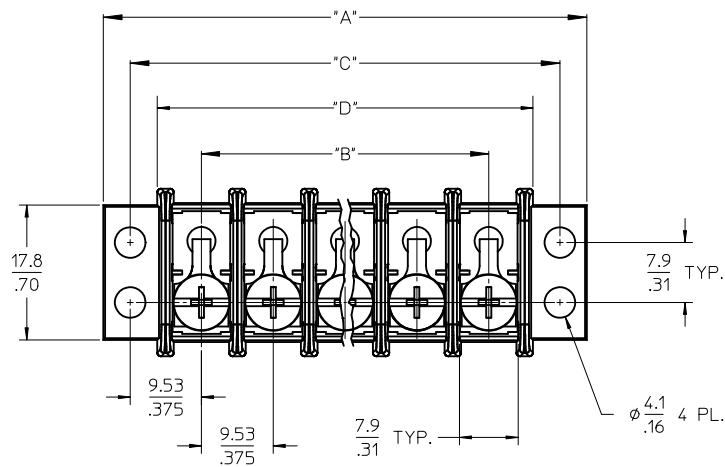
Contact us

Tel: +86-755-8981 8866 Fax: +86-755-8427 6832

Email & Skype: info@chipsmall.com Web: www.chipsmall.com

Address: A1208, Overseas Decoration Building, #122 Zhenhua RD., Futian, Shenzhen, China





- NOTES:
1. MATERIAL: SEE TABLE
 2. FINISHES: SEE TABLE
 3. DIMS SHOWN ARE FOR REFERENCE ONLY.
 4. *XX* REFERS TO THE QUANTITY OF CIRCUITS.
 5. ASSEMBLY IS RoHS COMPLIANT

7	XX	TERMINAL, SDR Y SN	BRASS	TIN
6	XX	SCREW, #6-32X.250, PAN HD, PHIL-SLOT W/WSHR (-50 OPT)	STEEL	CLEAR CHROMATE
5	XX	SCREW, #6-32X.250, BGHD, PHIL-SLOT (-49 OPTION)	BRASS	NICKEL
4	XX	SCREW, #6-32X.250, BGHD, PHIL-SLOT (STANDARD)	STEEL	CLEAR CHROMATE
3	XX	TERMINAL PLATE (-49 OPTION)	BRASS	TIN
2	XX	TERMINAL PLATE	BRASS	NICKEL
1	1	INSULATOR	PBT	BLACK
ITEM	QTY.	DESCRIPTION	MATERIAL	FINISH

RELEASED
IEC NO: JFG2012-0506
2012/03/12
DRWR:RSTONE
CHKD:B.RUPERT
APPR:DTITUS
2012/03/15
2012/03/16

QUALITY SYMBOLS
▽=0
▽=0

GENERAL TOLERANCES (UNLESS SPECIFIED)

	mm	INCH
4 PLACES	± .005	± .0005
3 PLACES	± .005	± .0005
2 PLACES	± .013	± .001
1 PLACE	± 0.3	± .01
0 PLACE	±	±

ANGULAR ± 2 °

DRAFT WHERE APPLICABLE MUST REMAIN WITHIN DIMENSIONS

DIMENSION STYLE
MM/IN

DRAWN BY
RSTONE

DATE
2012/03/12

CHECKED BY
B.RUPERT

APPROVED BY
DTITUS

DATE
2012/03/16

SCALE
1:1

DESIGN UNITS
INCH

THIRD ANGLE PROJECTION

TITLE
9.53MM [.375] DOUBLE ROW
BTS ASSEMBLY

molex

MATERIAL NO.
SEE SHT-2

DOCUMENT NO.
SD-38760-003

SHEET NO.
1 OF 2