



Chipsmall Limited consists of a professional team with an average of over 10 year of expertise in the distribution of electronic components. Based in Hongkong, we have already established firm and mutual-benefit business relationships with customers from,Europe,America and south Asia,supplying obsolete and hard-to-find components to meet their specific needs.

With the principle of “Quality Parts,Customers Priority,Honest Operation,and Considerate Service”,our business mainly focus on the distribution of electronic components. Line cards we deal with include Microchip,ALPS,ROHM,Xilinx,Pulse,ON,Everlight and Freescale. Main products comprise IC,Modules,Potentiometer,IC Socket,Relay,Connector.Our parts cover such applications as commercial,industrial, and automotives areas.

We are looking forward to setting up business relationship with you and hope to provide you with the best service and solution. Let us make a better world for our industry!



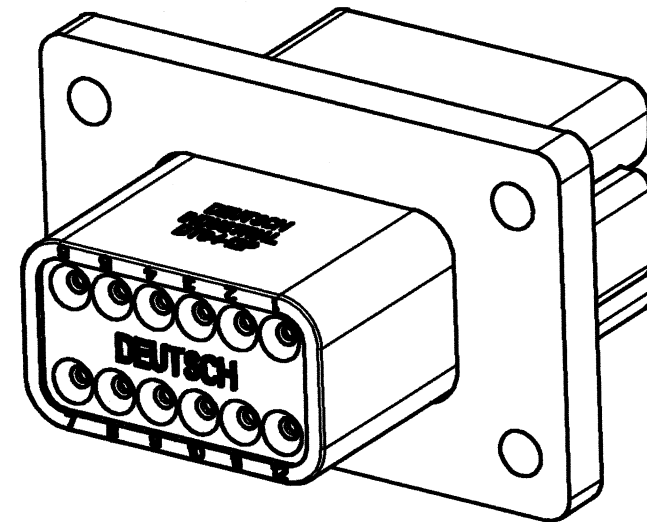
Contact us

Tel: +86-755-8981 8866 Fax: +86-755-8427 6832

Email & Skype: info@chipsmall.com Web: www.chipsmall.com

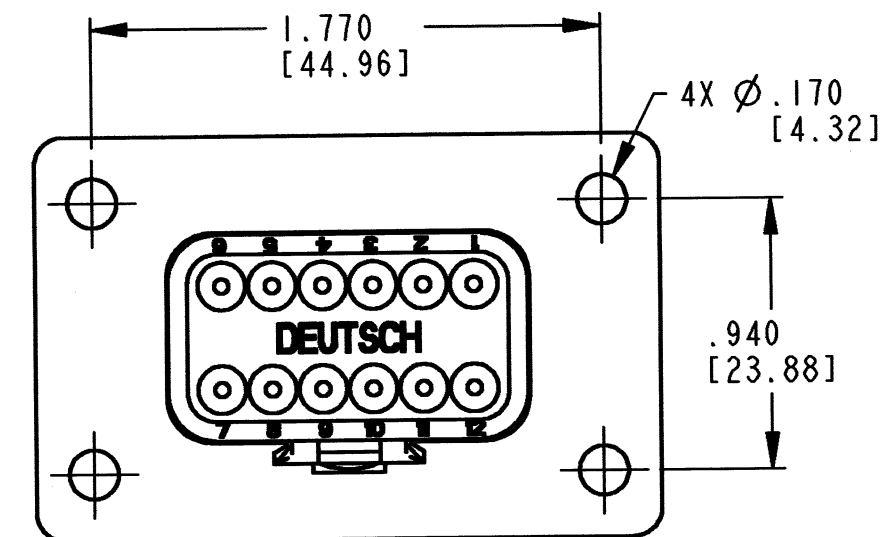
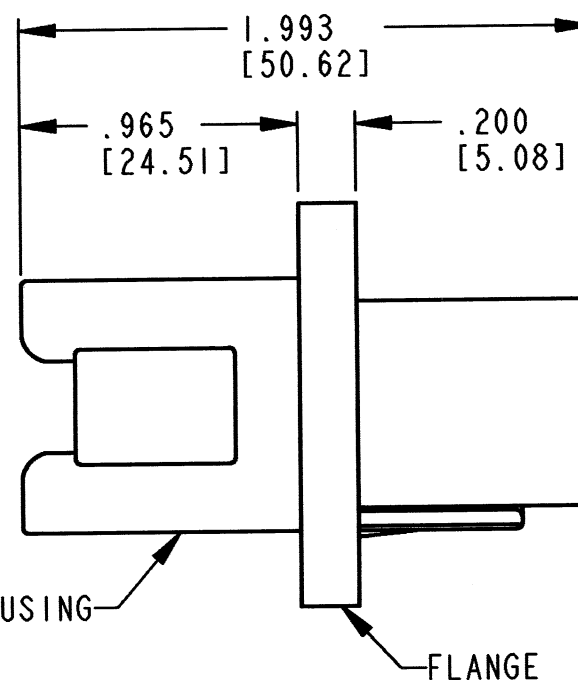
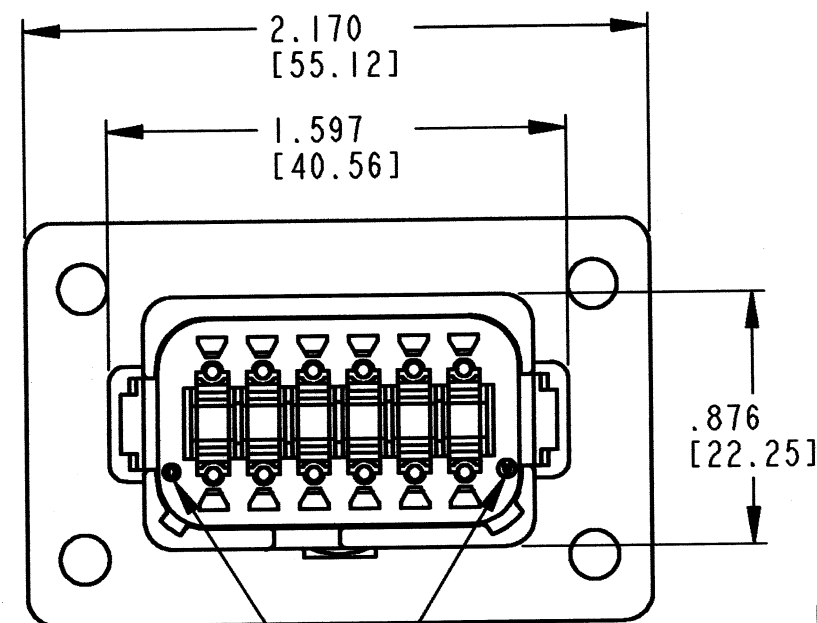
Address: A1208, Overseas Decoration Building, #122 Zhenhua RD., Futian, Shenzhen, China





REV
A DT04-12P*-BL04

REVISIONS			
SYM	DESCRIPTION	DATE	APPROVED
NC	NEW RELEASE/REPLACES PREVIOUS		
	RELEASE PER E.O. P20101	4/15/09	R.D.R.
A	REVISED PER E.O. P20438	5-10-10	RDR



DATE CODE: MONTH IS REPRESENTED BY SEQUENTIAL ALPHA CHARACTERS. EX: A = JANUARY
YEAR IS REPRESENTED BY LAST DIGIT. EX. 0 = 2000.

CONTACT SIZE	MIN. INSUL. O.D.	MAX. INSUL. O.D.	WIRE RANGE [mm ²]
16	.088 [2.24]	.145 [3.68]	14-20 AWG [2.0-0.5]

5. MATERIAL - SHELL: PLASTIC
SEAL: RUBBER

4. THIS RECEPTACLE MATES WITH DT06-12S*-*****. (* = KEY ARR. A,B,C,D, *****=ALL MODIFICATIONS.) CONSULT FACTORY FOR MODIFICATIONS.

3. FOR CONTACTS AND WIRE PERFORMANCE AND APPLICATION CHARACTERISTICS SEE ENVELOPE DRAWING 0425-015-0000 AND 0425-017-0000.

2. DIMENSIONS ARE ±.025[0.63] UNLESS OTHERWISE SPECIFIED.

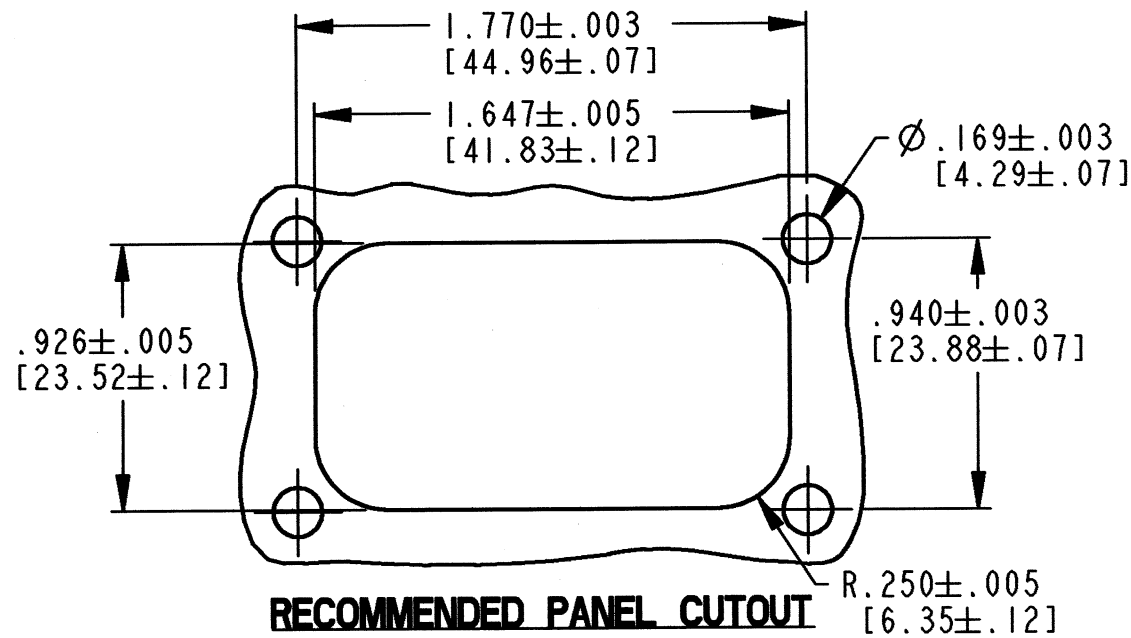
NOTES: 1. DIMENSIONS ARE IN INCHES [MILLIMETERS].

SIGNATURE & DATE	
DR	R.MESSENGER 1/6/09
CHK	P.M. 5/14/10
PE	K. Messenger 2/22/10
APPD	S. Bounds 5-4-10
SCALE	NONE
WT	

12 WAY RECEPTACLE
WITH ENHANCED KEY
AND FLANGE
DT SERIES

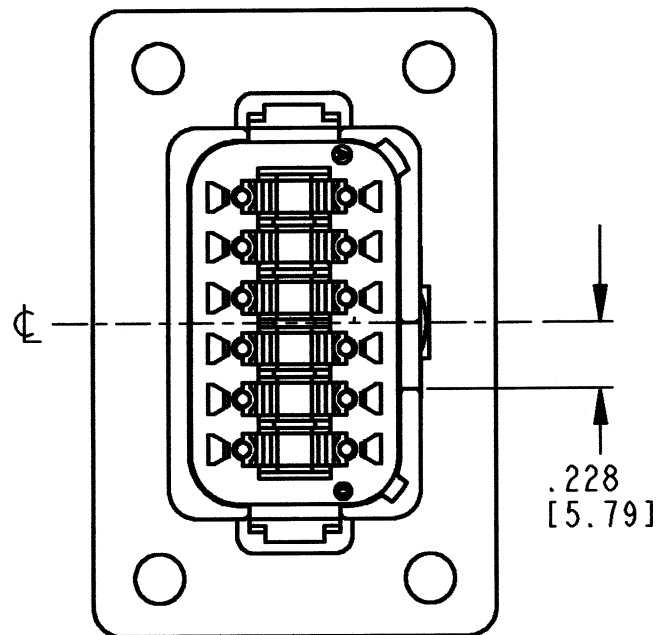
ENVELOPE

EP	MATL. CODE
3850 INDUSTRIAL AVE. HEMET, CA 92545	
B	DT04-12P*-BL04
DWG SIZE	CODE 11139 SHEET 1 OF 2

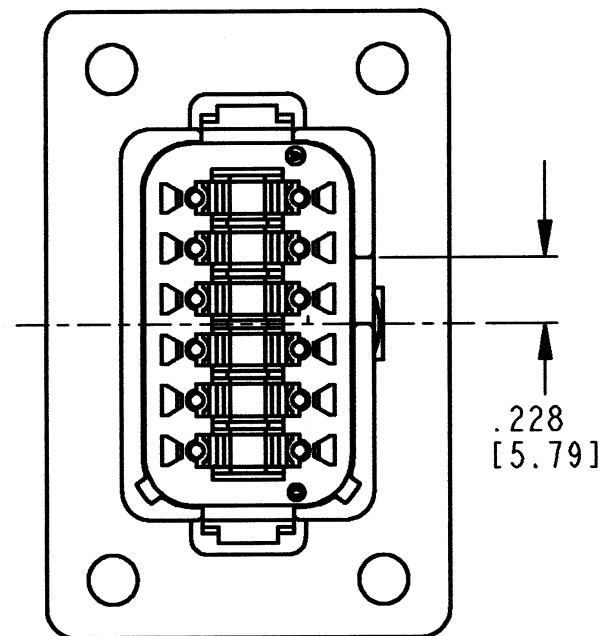


REV A	DT04-12P*-BL04	REVISIONS			
		SYM	DESCRIPTION	DATE	APPROVED
		A	SEE SHEET I	5-18-10	MR

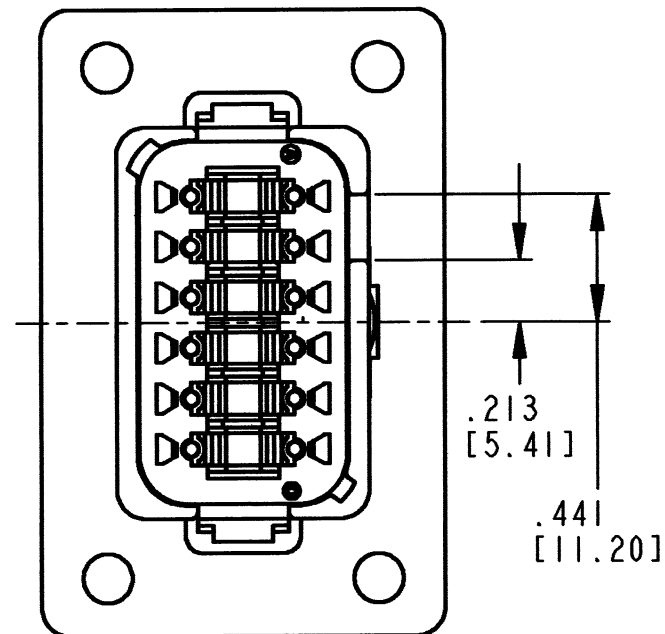
DT04-12PA-BL04
KEY -A-
COLOR: GRAY



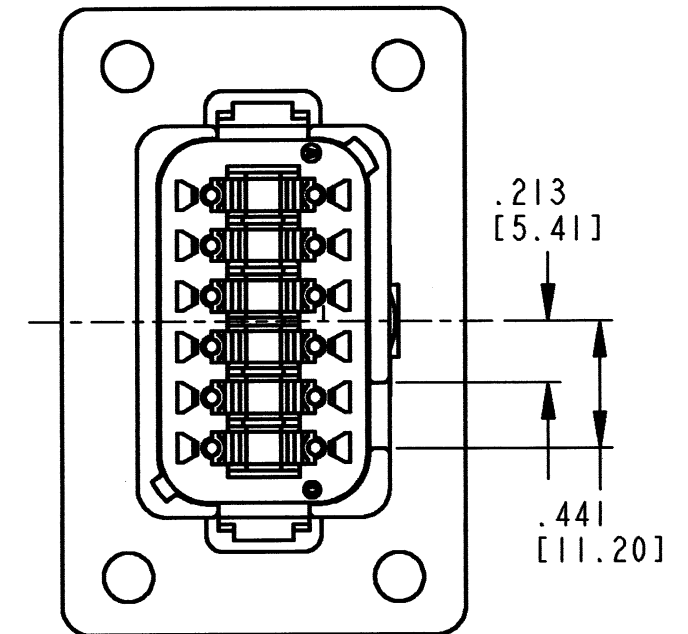
DT04-12PB-BL04
KEY -B-
COLOR: BLACK



DT04-12PC-BL04
KEY -C-
COLOR: GREEN



DT04-12PD-BL04
KEY -D-
COLOR: BROWN



NOTES:

SIGNATURE & DATE		12 WAY RECEPTACLE WITH ENHANCED KEY AND FLANGE DT SERIES		EP	MATL. CODE
DR	R. MESSENGER 1/6/09			 3850 INDUSTRIAL AVE. HEMET, CA 92545 DEUSCH INDUSTRIAL	
CHK	<i>R. Messenger</i> 5/14/10				
PE	<i>R. Messenger</i> 2/22/10				
APPD	<i>S. Bump</i> 5-4-10				
SCALE	NONE	WT	ENVELOPE	B	DT04-12P*-BL04
				DWG SIZE	CODE 11139
					SHEET 2 OF 2