



Chipsmall Limited consists of a professional team with an average of over 10 year of expertise in the distribution of electronic components. Based in Hongkong, we have already established firm and mutual-benefit business relationships with customers from,Europe,America and south Asia,supplying obsolete and hard-to-find components to meet their specific needs.

With the principle of “Quality Parts,Customers Priority,Honest Operation,and Considerate Service”,our business mainly focus on the distribution of electronic components. Line cards we deal with include Microchip,ALPS,ROHM,Xilinx,Pulse,ON,Everlight and Freescale. Main products comprise IC,Modules,Potentiometer,IC Socket,Relay,Connector.Our parts cover such applications as commercial,industrial, and automotives areas.

We are looking forward to setting up business relationship with you and hope to provide you with the best service and solution. Let us make a better world for our industry!



Contact us

Tel: +86-755-8981 8866 Fax: +86-755-8427 6832

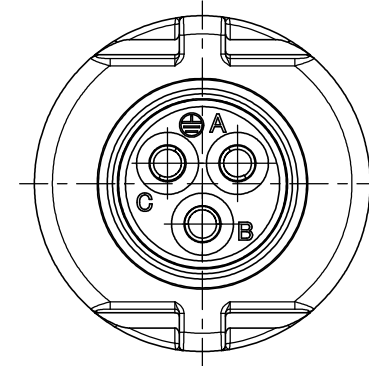
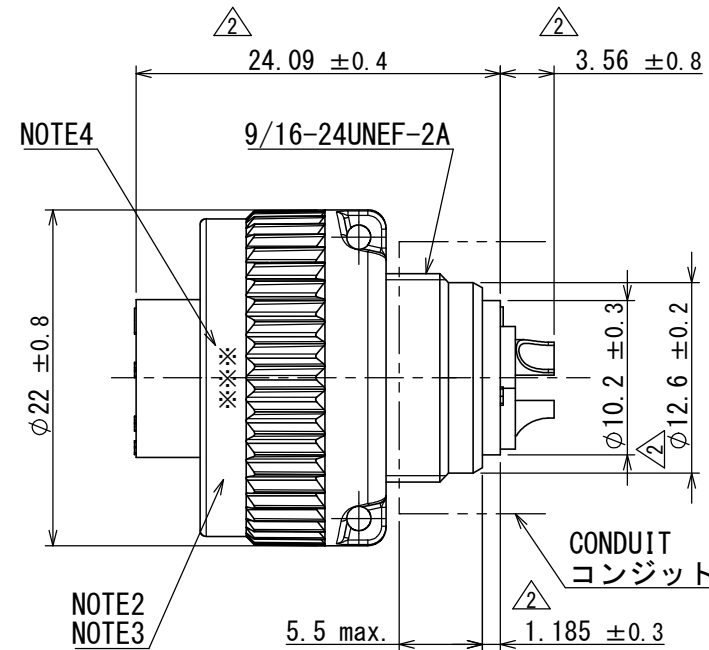
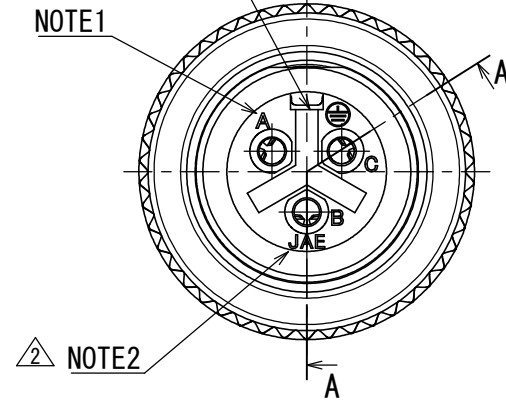
Email & Skype: info@chipsmall.com Web: www.chipsmall.com

Address: A1208, Overseas Decoration Building, #122 Zhenhua RD., Futian, Shenzhen, China



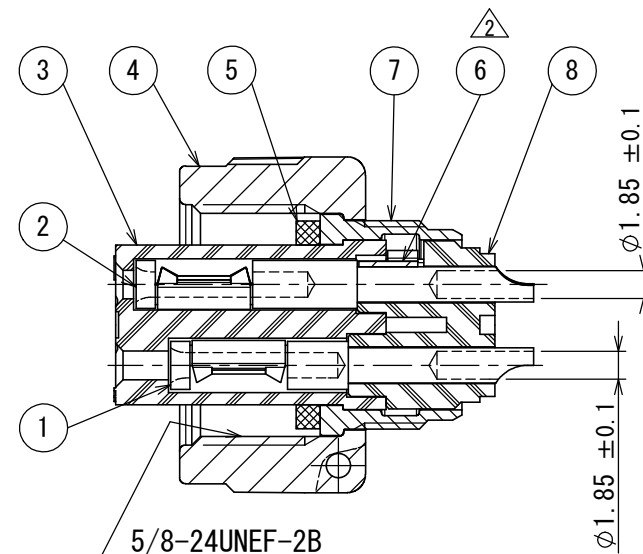
版数 VER.	年月日 DATE	CN NO.	変更内容 DESCRIPTION	製図 DR.	担当 CHK.	査閲 APPD.	承認 APPD.
2	08/FEB/2016	015591	CHANGING FIXING METHOD OF EARTH CONTACT	—	T. NAKAMURA	T. SUZUKI	H. EBIHARA

POLARIZING GROOVE
位置決めキイ溝



DESIGNATION
命名法

J L 0 4 V - 6 A 1 0 S L - 3 S E - R
SERIES
シリーズ名
PLUG
プラグ
CLASS
防水構造
SHELL SIZE
シェルサイズ
CONTACT ARRANGEMENT
インサート名
SOCKET CONTACT
ソケットコンタクト
WITH PROTECTIVE EARTH CONTACT
保護回路接続構造有
SUFFIX
特殊記号



断面図 A-A

- NOTE 1. CONTACT POSITION NUMBER IS MARKED IN THE AREA SHOWN.
EARTH MARK (⊕) IS MARKED NEAR BY CONTACT No. "C".
2. COMPANY LOGO "JAE" APPEARS IN THE AREA SHOWN.
3. PART NUMBER IS MARKED IN THE AREA SHOWN.
"R" IS NOT MARKED.
4. PRODUCTION LOT NUMBER ARE MARKED AS INDICATED.

- 注1. 図示の位置に端子番号を表示する。
又、保護回路接続 (C端子) は ⊕ で表わす。
2. 図示の位置に社名を表示する。【JAE】
3. 図示の位置に品名を表示する。但し、-Rは表示しない。
【JL04V-6A10SL-3SE】
4. 図示の位置に製造ロットNo. を表示する。

※※※
MANUFACTURER MONTH (1 ~ 9 , X , Y , Z)
(JAN. ~ SEP. , OCT. , NOV. , DEC.)
MANUFACTURER YEAR (' 15 , ' 16 , ' 17 , . . .)

※※※
製造月 (1 ~ 9 月、X : 10 月、Y : 11 月、Z : 12 月)
製造年 (' 15 , ' 16 , ' 17 , . . .)

特別管理品目
SPECIAL CONTROL ITEM
TÜV


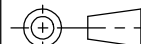
SPECIFICATION

NUMBER OF CONTACT : 3 × #16
RATED VOLTAGE : 200VAC
RATED CURRENT : 13A MAX. / ONE CONTACT
DIELECTRIC
WITHSTANDING VOLTAGE: 2000VAC (ONE MINUTE)
INSULATION RESISTANCE: 5000MΩ MIN. (AT 500VDC)
(NOT MATED CONDITION)
APPLICABLE WIRE : 1.25mm² MAX.

仕様

コンタクト: #16コンタクト 3本
定格電圧: 200VAC
定格電流: 13A以下/1芯
耐電圧: 2000VAC(1分)
絶縁抵抗: 5000MΩ以上 (500VDCにて)
適用電線: 1.25mm²以下

8	REAR INSULATOR	1	SYNTHETIC RESIN	—	COLOR:BLACK
7	BARREL	1	ALUMINUM ALLOY	ZINC PLATING	COLOR:BLACK SYSTEM INTERFERENCE COLOR
6	EARTH LUG	1	COPPER ALLOY	SILVER PLATING	—
5	GASKET	1	SYNTHETIC RUBBER	—	COLOR:BLACK
4	COUPLING NUT	1	ALUMINUM ALLOY	ZINC PLATING	COLOR:BLACK SYSTEM INTERFERENCE COLOR
3	FRONT INSULATOR	1	SYNTHETIC RESIN	—	COLOR:BLACK
2	EARTH CONTACT	1	COPPER ALLOY	SILVER PLATING	CONTACT NO. : C
1	POWER CONTACT	2	COPPER ALLOY	SILVER PLATING	CONTACT NO. : A, B
符号 NO.	名 称 DESCRIPTION	個 数 QTY.	材 料 MATERIAL	仕 上 FINISH	備 考 REMARKS

仕様書 (SPECIFICATION) JACS-5080		第1版 (ORIGINAL DATE) 14/DEC/2005		尺度 (SCALE) 2:1		シリーズ (SERIES) JL04V		日本航空電子工業株式会社	
一般公差 (GENERAL TOLERANCE) 寸法 (DIMENSION) ±0.8 × ±0.4 ×× ±0.1 ××× ± 単位 (UNIT) : mm		製図 DR.		名称 (TITLE) JL04V-6A10SL -3SE-R		 JAPAN AVIATION ELECTRONICS INDUSTRY, LTD.		図面番号 (DRAWING NO.) SJ105364	
		担当 CHK.		質量 (MASS) —					
		査閲 APPD.							
		承認 APPD.				版数 (VER.)		2	