



Chipsmall Limited consists of a professional team with an average of over 10 year of expertise in the distribution of electronic components. Based in Hongkong, we have already established firm and mutual-benefit business relationships with customers from,Europe,America and south Asia,supplying obsolete and hard-to-find components to meet their specific needs.

With the principle of “Quality Parts,Customers Priority,Honest Operation,and Considerate Service”,our business mainly focus on the distribution of electronic components. Line cards we deal with include Microchip,ALPS,ROHM,Xilinx,Pulse,ON,Everlight and Freescale. Main products comprise IC,Modules,Potentiometer,IC Socket,Relay,Connector.Our parts cover such applications as commercial,industrial, and automotives areas.

We are looking forward to setting up business relationship with you and hope to provide you with the best service and solution. Let us make a better world for our industry!



Contact us

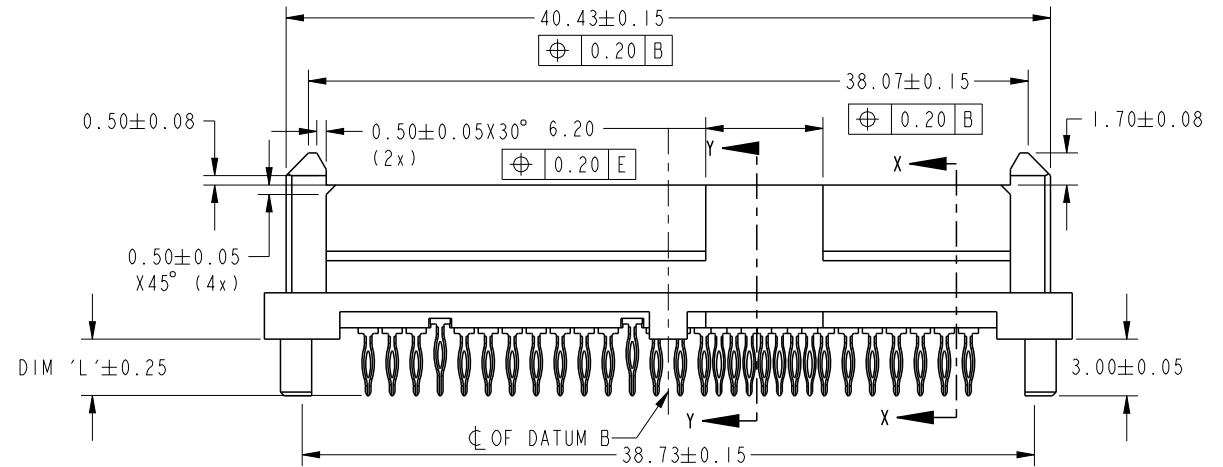
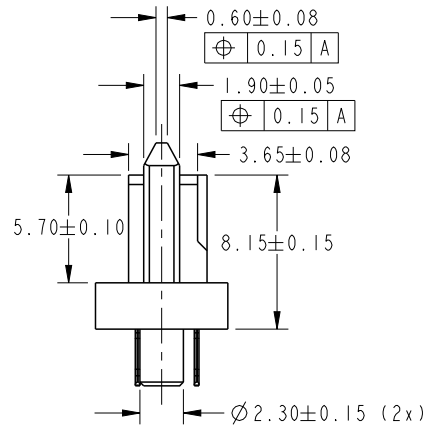
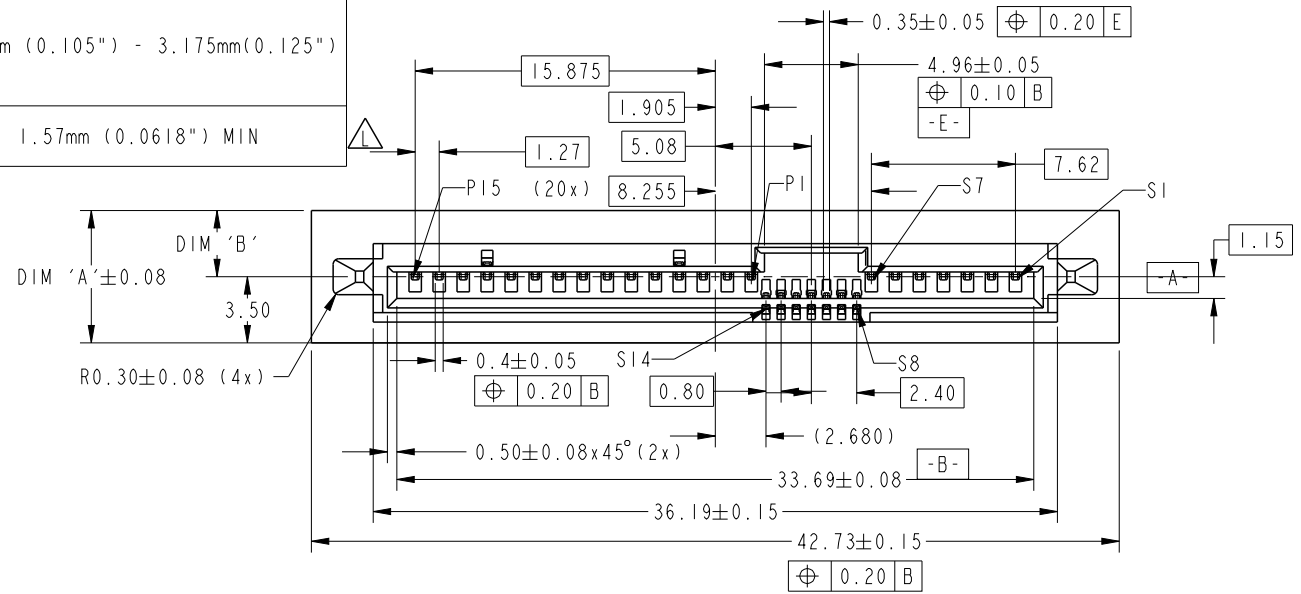
Tel: +86-755-8981 8866 Fax: +86-755-8427 6832

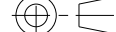


Email & Skype: info@chipsmall.com Web: www.chipsmall.com

Address: A1208, Overseas Decoration Building, #122 Zhenhua RD., Futian, Shenzhen, China



PRODUCT NO	DIM 'A'	DIM 'B'	DIM 'L'	PLATING	RECOMMENDED P.C. BOARD THICKNESS
10045782-001LF	7.00	3.50	3.50	NOTE 2	2.67mm (0.105") - 3.175mm(0.125")
10045782-011LF	6.00	2.50		NOTE 3	
10045782-001	7.00	3.50			
10045782-011	6.00	2.50			
10045782-002LF	7.00	3.50	2.70	NOTE 2	1.57mm (0.0618") MIN
10045782-012LF	6.00	2.50			



spec ref		SEE NOTES		dr	w wadmin	2005/10/11	projection 	MM 	size	A4	scale	3:1
tolerance std ASME Y14.5	TOLERANCES UNLESS OTHERWISE SPECIFIED			eng	Noorhazelinda	2016/07/12			ecn no	ELX-M-24482-1		
				chr	-	-						
				appr	Koon-Poh Tay	2016/07/18	product family		SAS	rel level		Released
surface 	linear	0.X	±0.2	Amphenol FCI	title	SAS RECEPTACLE PF STAGGER			dwg no	10045782		rev L
		0.XX	±0.2									
		0.XXX	±0									
		angular	0°	±2°		cat. no.	Product - Customer Drw			sheet 1 of 3		

PRODUCT NO	SEE TABLE	
HOLE	A	REMARK
HOLE DIAMETER AFTER PLATING	0.45-0.55 mm	FOR -XXX & -XXXLF
DRILLED HOLE	0.58-0.62 mm	
COPPER PLATING	25-50 µm	
Sn PLATING	5-15 µm	FOR -XXXLF ONLY
Sn-Pb PLATING	5-15 µm	FOR -XXX ONLY

NOTE:

1. MATERIAL:

A) HOUSING: HIGH TEMPERATURE THERMOPLASTIC, UL 94V-0
COLOUR: BLACK

B) TERMINAL: COPPER ALLOY

C) HOLD DOWN: COPPER ALLOY

2. FINISH (LEAD-FREE):

A) TERMINAL: 30µ" Au PLATING (CONTACT POINT) OVER 50µ" NICKEL

B) PRESSFIT TAIL: 20µ" MIN - 60µ" MAX Sn OVER 50µ" NICKEL

C) HOLD DOWN: 50µ" min Sn OVER 50µ" NICKEL

3. FINISH (TIN LEAD):

A) TERMINAL: 30µ" Au PLATING (CONTACT POINT) OVER 50µ" NICKEL

B) PRESSFIT TAIL: 20µ" MIN - 60µ" MAX Sn-Pb OVER 50µ" NICKEL

C) HOLD DOWN: 50µ" min Sn-Pb OVER 50µ" NICKEL

4. PER SFF REV 1.4 EXCEPT 0.8mm PITCH BUMP AREA.

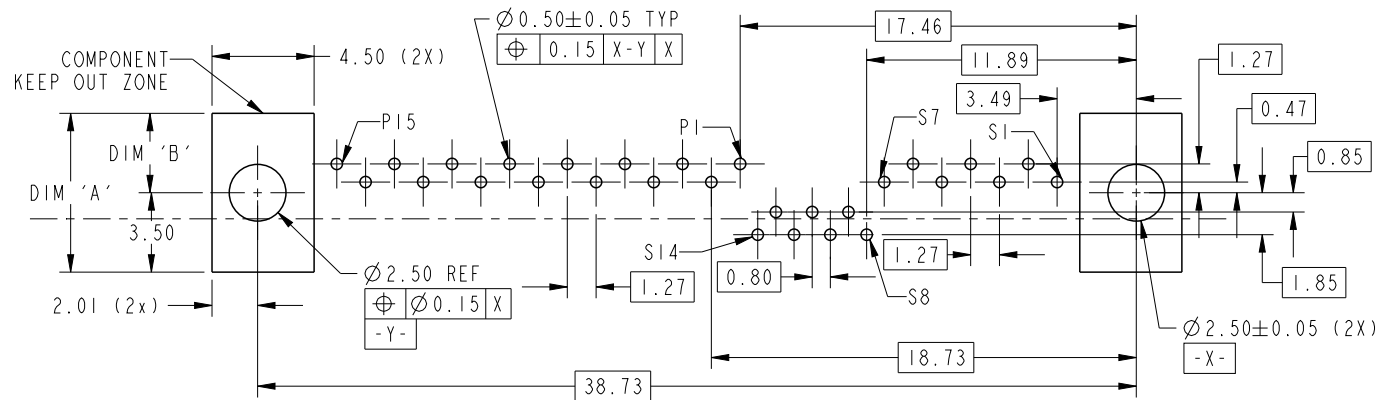
5. THE HOUSING WILL WITHSTAND EXPOSURE TO 260°C PEAK TEMPERATURE FOR 10 SECONDS IN A CONVECTION, INFRA-RED OR VAPOR PHASE REFLOW OVEN.

6. THIS PRODUCT MEETS EUROPE UNION DIRECTIVES AND OTHER COUNTRY REGULATIONS AS DESCRIBED IN GS-22-008.

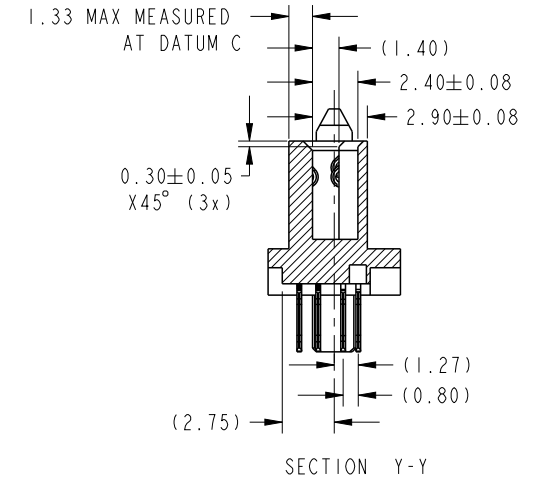
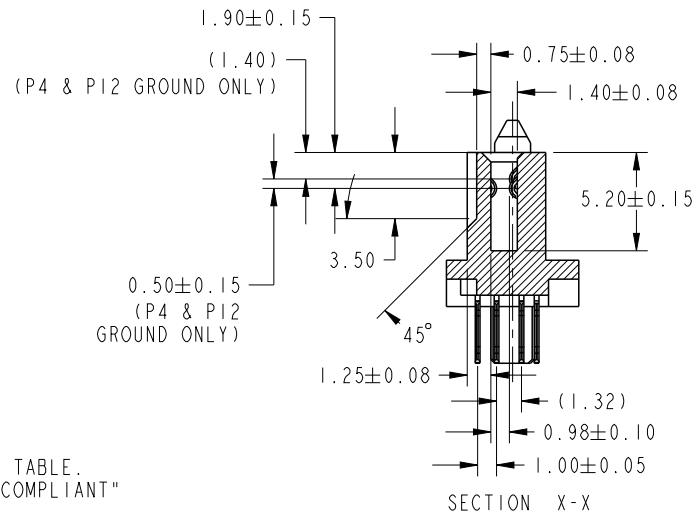
7. A \triangle SYMBOL WILL BE NEXT TO ANY DIMENSION, VIEW, OR NOTE WHICH HAS BEEN MODIFIED WITH THE CURRENT DRAWING REVISION.

8. NOTE 6 NOT APPLICABLE TO TIN LEAD PLATING P/N XXXXXXXX-XXX IN TABLE.

9. TIN/LEAD PLATED PRESS-FIT CONNECTORS ARE CONSIDERED EU "ROHS COMPLIANT" WITH THE EXEMPTION ALLOWED FOR COMPLIANT PIN CONNECTORS.

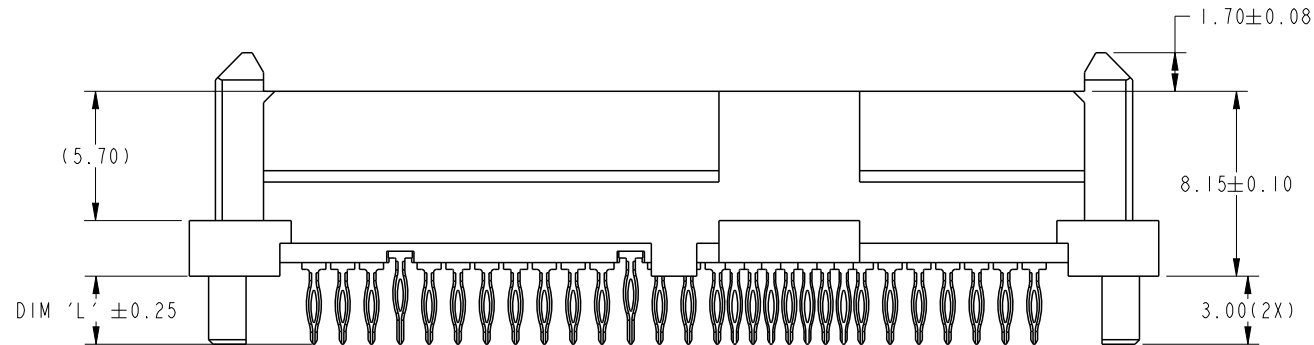
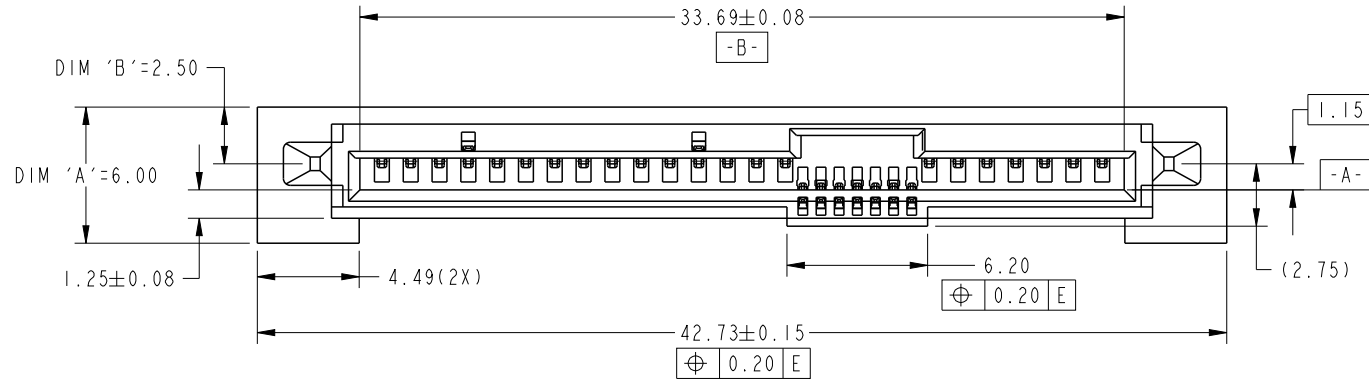


RECOMMENDED PCB LAYOUT



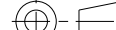


spec ref		SEE NOTES			dr		w wadmin	2005/10/11	<div>projection</div> <div></div>	<div>MM</div> <div></div>	size	A4	scale	1:1		
tolerance std	ASME Y14.5	TOLERANCES UNLESS OTHERWISE SPECIFIED			eng		Noorhazelinda	2016/07/12			ecn no	ELX-M-24482-1				
					chr		-	-				rel level	Released			
					appr		Koon-Poh Tay	2016/07/18					product family			
surface	<div>✓</div>	linear	0.X	±0.2	Amphenol	FCI	title	SAS RECEPTACLE PF STAGGER				dwg no	10045782		rev	L
			0.XX	±0.2												
			0.XXX	±0												
		angular	0°	±2°												

PRODUCT NO	DIM 'A'	DIM 'B'	DIM 'L'	PLATING	RECOMMENDED P.C. BOARD THICKNESS
10045782-021LF	6.00	2.50	3.50	NOTE 2	2.67mm (0.105") - 3.175mm(0.125")
10045782-021				NOTE 3	



NOTES:
ALL OTHER UNSPECIFIED DIMENSIONS, REFER TO SHEET 1 & 2

SCALE 3:1

spec ref		SEE NOTES			dr		w wadmin	2005/10/11	projection 	MM 	size	A4	scale	1:1		
tolerance std ASME Y14.5	TOLERANCES UNLESS OTHERWISE SPECIFIED			eng		Noorhazinda	2016/07/12	ecn no			ELX-M-24482-1					
				chr		-	-				rel level	Released				
					appr		Koon-Poh Tay	2016/07/18	product family			SAS				
surface 	linear	0.X	±0.2		Amphenol FCI	title	SAS RECEPTACLE PF STAGGER					dwg no	10045782		rev	L
		0.XX	±0.2													
		0.XXX	±0													
	angular	0°	±2°													