



Chipsmall Limited consists of a professional team with an average of over 10 year of expertise in the distribution of electronic components. Based in Hongkong, we have already established firm and mutual-benefit business relationships with customers from,Europe,America and south Asia,supplying obsolete and hard-to-find components to meet their specific needs.

With the principle of “Quality Parts,Customers Priority,Honest Operation,and Considerate Service”,our business mainly focus on the distribution of electronic components. Line cards we deal with include Microchip,ALPS,ROHM,Xilinx,Pulse,ON,Everlight and Freescale. Main products comprise IC,Modules,Potentiometer,IC Socket,Relay,Connector.Our parts cover such applications as commercial,industrial, and automotives areas.

We are looking forward to setting up business relationship with you and hope to provide you with the best service and solution. Let us make a better world for our industry!



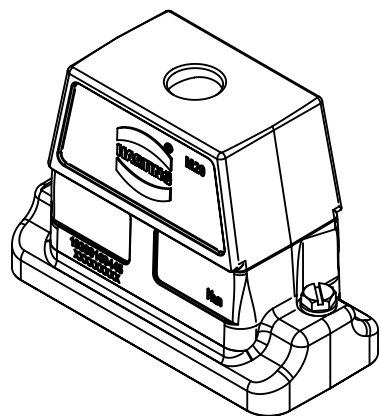
Contact us

Tel: +86-755-8981 8866 Fax: +86-755-8427 6832

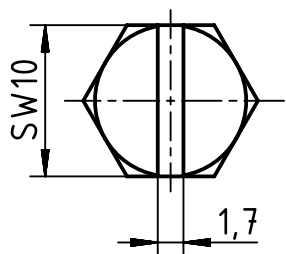
Email & Skype: info@chipsmall.com Web: www.chipsmall.com

Address: A1208, Overseas Decoration Building, #122 Zhenhua RD., Futian, Shenzhen, China

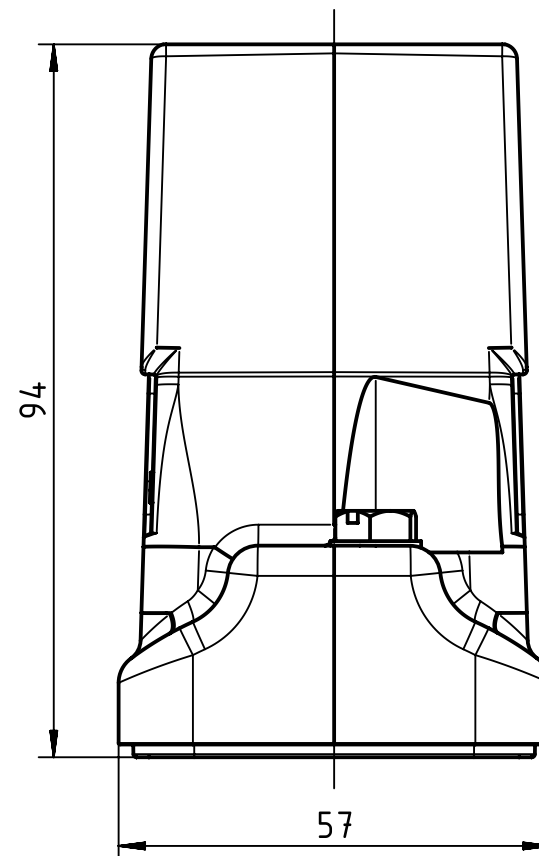
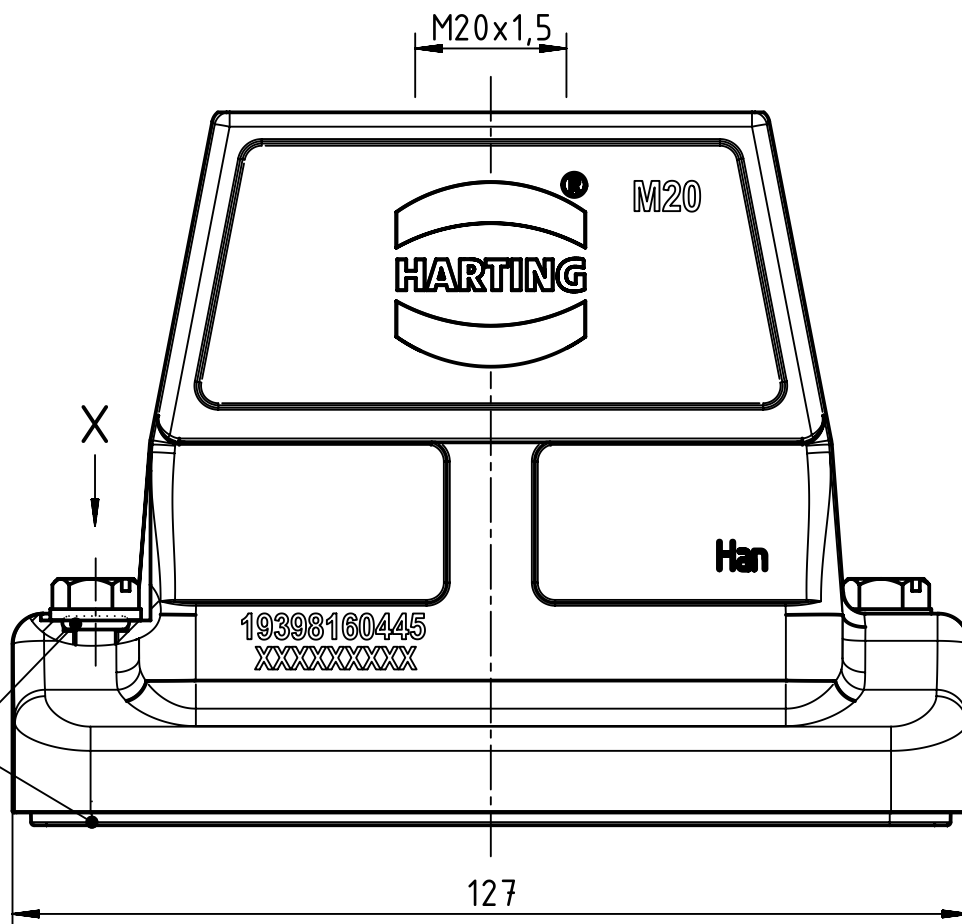




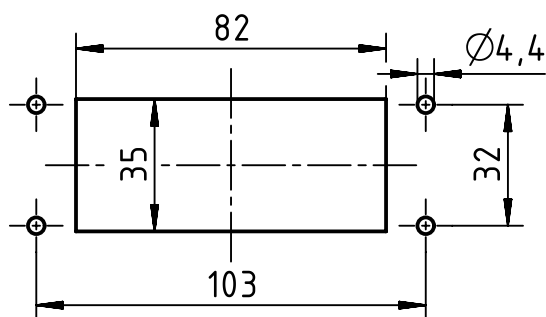
X (2:1)



Seal



Panel cut out (1:2)



All Dimensions in mm
Original Size DIN A4



All rights reserved
Department EL PD - CN

HARTING (Zhuhai) Manufacturing Co., Ltd.
519085 Zhuhai, China

Scale
1:1

Free size tol.

Created by
LONGL

Inspected by
WENE

Standardisation
SCHMIDTM

Ref.

Sub.

Date
2017-03-20

State
Final Release

Title
Han 16HP Direct/EMV-HTE-M20

Doc-Key / ECM-Nr.
100665112/UGD/002/C
500000116966

Type
TB

Number
19 39 816 0445

Rev.
C

Page
1/1