



Chipsmall Limited consists of a professional team with an average of over 10 year of expertise in the distribution of electronic components. Based in Hongkong, we have already established firm and mutual-benefit business relationships with customers from,Europe,America and south Asia,supplying obsolete and hard-to-find components to meet their specific needs.

With the principle of “Quality Parts,Customers Priority,Honest Operation,and Considerate Service”,our business mainly focus on the distribution of electronic components. Line cards we deal with include Microchip,ALPS,ROHM,Xilinx,Pulse,ON,Everlight and Freescale. Main products comprise IC,Modules,Potentiometer,IC Socket,Relay,Connector.Our parts cover such applications as commercial,industrial, and automotives areas.

We are looking forward to setting up business relationship with you and hope to provide you with the best service and solution. Let us make a better world for our industry!



## Contact us

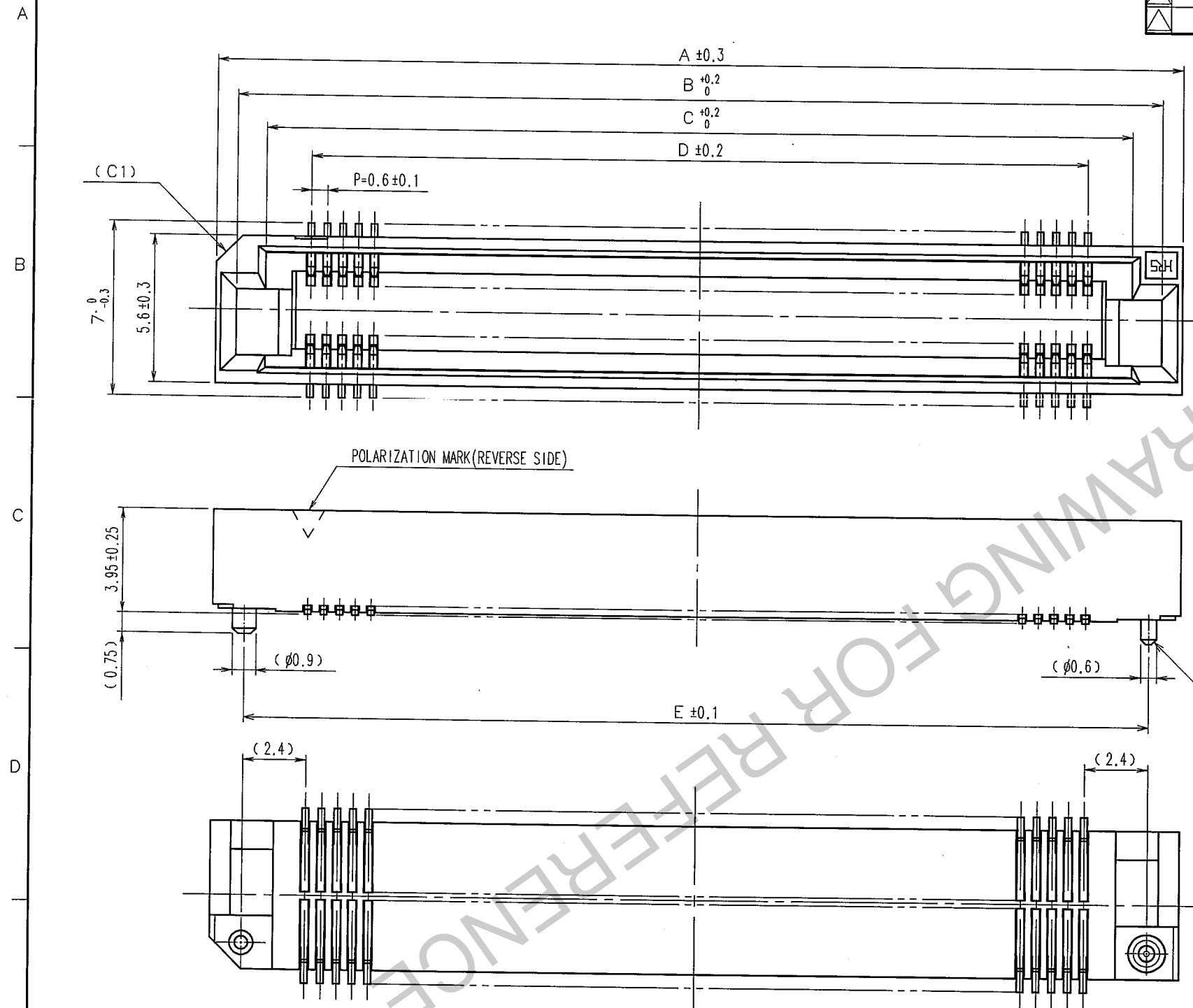
Tel: +86-755-8981 8866 Fax: +86-755-8427 6832

Email & Skype: [info@chipsmall.com](mailto:info@chipsmall.com) Web: [www.chipsmall.com](http://www.chipsmall.com)

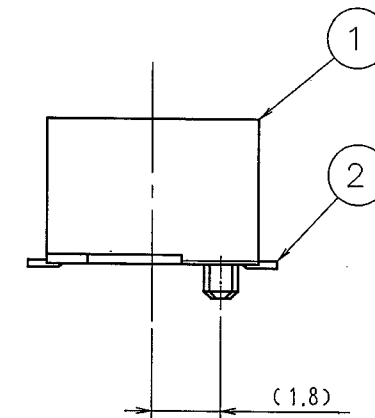
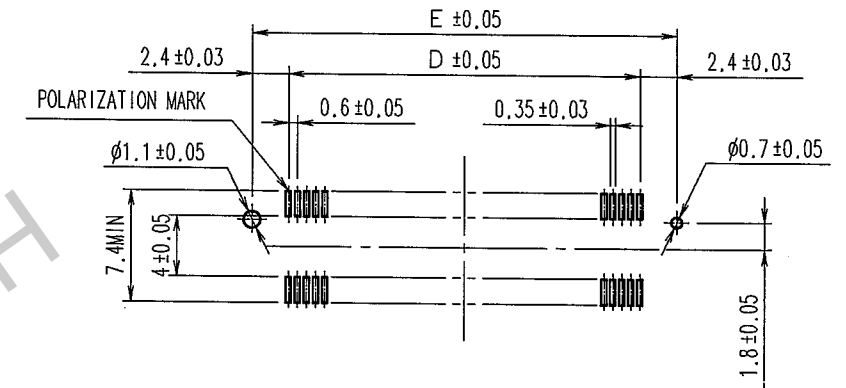
Address: A1208, Overseas Decoration Building, #122 Zhenhua RD., Futian, Shenzhen, China



COUNT	DESCRIPTION OF REVISIONS	BY	CHKD	DATE	COUNT	DESCRIPTION OF REVISIONS	BY	CHKD	DATE
△					△				
△					△				
△					△				

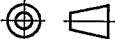


RECOMMENDED LAND PATTERN DIMENSION OF PCB(MOUNTING SIDE) (2:1)



CL No.	PART No.	A	B	C	D	E
CL578-0801-2-91	FX8C- 60S-SV(91)	24.6	23.05	20.8	17.4	22.2
CL578-0803-8-91	FX8C- 80S-SV(91)	30.6	29.05	26.8	23.4	28.2
CL578-0805-3-91	FX8C-100S-SV(91)	36.6	35.05	32.8	29.4	34.2
CL578-0806-6-91	FX8C-120S-SV(91)	42.6	41.05	38.8	35.4	40.2
CL578-0807-9-91	FX8C-140S-SV(91)	48.6	47.05	44.8	41.4	46.2

- NOTE 1 LEAD CO-PLANARITY SHALL BE 0.1 mm MAX.  
2 FOR DETAILS,SEE THE SECTION CONCERNING THE DELIVERY FORM ON NEXT PAGE.  
3 FOR MODIFICATION,ETC.,PREVENTIVE HOLE FOR SINK MARK MAY BE ADDED DEPENDS ON CIRCUMSTANCES.  
4 THE DIMENSIONS IN PARENTHESES ARE FOR REFERENCE.

1	POLYPHENYLENE SULFIDE	LIGHT BROWN	UL94V-0	2	PHOSPHOR BRONZE	CONTACT AREA : GOLD 0.1μm min.		
						MOUNTING AREA : GOLD FLASH		
						UNDER PLATING : NICKEL 1.5μm min.		
NO.	MATERIAL	FINISH, REMARKS		NO.	MATERIAL	FINISH, REMARKS		
CODE NO. (OLD)			DRAWN		DESIGNED	CHECKED	APPROVED	RELEASED
			T. Noda		K. Doi	H. Okawa	H. Okawa	
			'05.03.16		'05.03.16	'05.03.16	'05.03.16	
		DRAWING NO.			PART NO.			
SCALE		EDC3-151022-21			FX8C-***S-SV(91)			
5 : 1								
UNITS		HRS			CODE NO.			
mm		HIROSE ELECTRIC CO., LTD			CL578			
					1/2			

TO  
PCK

1

2

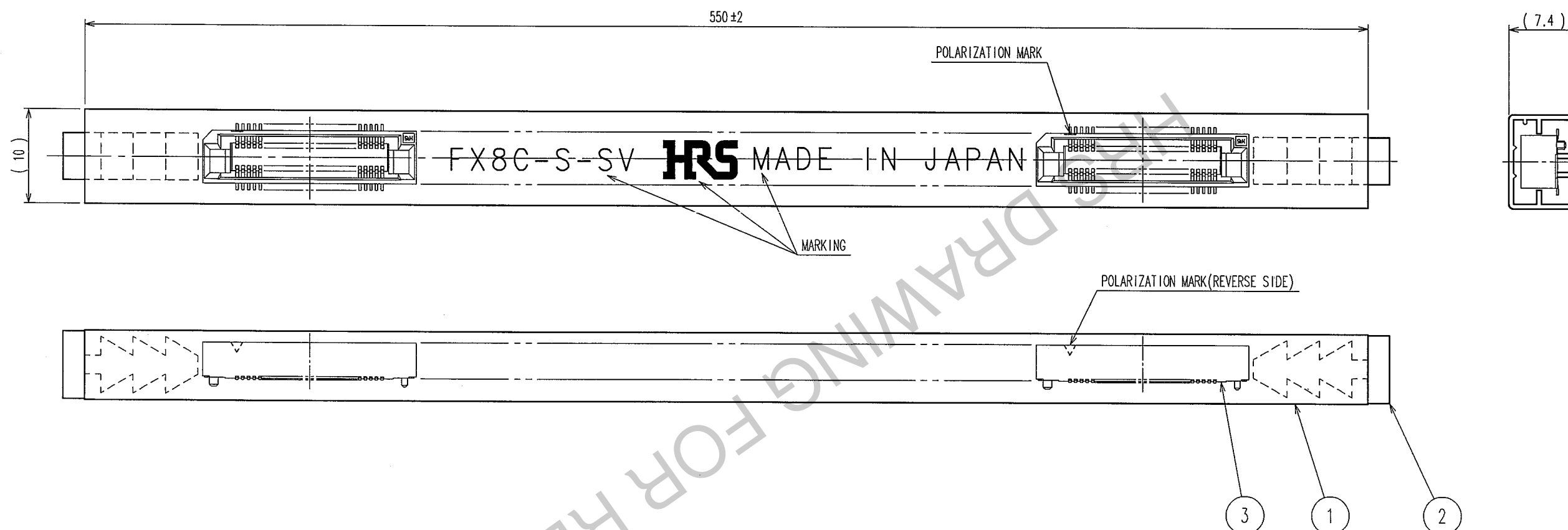
3

May.1.2017 Copyright 2017 HIROSE ELECTRIC CO., LTD. All Rights Reserved. 6

7

8

COUNT	DESCRIPTION OF REVISIONS	BY	CHKD	DATE	COUNT	DESCRIPTION OF REVISIONS	BY	CHKD	DATE
△				..	△				..
△				..	△				..
△				..	△				..



## DELIVERY FORM(TUBE PACKAGING)

NUMBER OF CONTACTS (CONTACTS)	60	80	100	120	140
PRODUCT CONTENT(PCS)	21	17	14	12	10

NOTE. THE DIMENSIONS IN PARENTHESES ARE FOR PREFERENCE.

2	POLYVINYL CHLORIDE	STOPPER	3	(CONNECTOR)	
1	POLYVINYL CHLORIDE	TUBE			
NO.	MATERIAL	FINISH, REMARKS	NO.	MATERIAL	FINISH, REMARKS
CODE NO. (OLD)			DRAWN	DESIGNED	CHECKED
			T.Noda	K. Doi	H. Okawa
			'05.03.16	'05.03.16	'05.03.16
DRAWING NO.			PART NO.		
EDC3-151022-21			FX8C-**-S-SV(91)		
UNITS			CODE NO.		
mm			CL578		

TO  
PCK

HIF