



Chipsmall Limited consists of a professional team with an average of over 10 year of expertise in the distribution of electronic components. Based in Hongkong, we have already established firm and mutual-benefit business relationships with customers from,Europe,America and south Asia,supplying obsolete and hard-to-find components to meet their specific needs.

With the principle of “Quality Parts,Customers Priority,Honest Operation,and Considerate Service”,our business mainly focus on the distribution of electronic components. Line cards we deal with include Microchip,ALPS,ROHM,Xilinx,Pulse,ON,Everlight and Freescale. Main products comprise IC,Modules,Potentiometer,IC Socket,Relay,Connector.Our parts cover such applications as commercial,industrial, and automotives areas.

We are looking forward to setting up business relationship with you and hope to provide you with the best service and solution. Let us make a better world for our industry!



Contact us

Tel: +86-755-8981 8866 Fax: +86-755-8427 6832

Email & Skype: info@chipsmall.com Web: www.chipsmall.com

Address: A1208, Overseas Decoration Building, #122 Zhenhua RD., Futian, Shenzhen, China



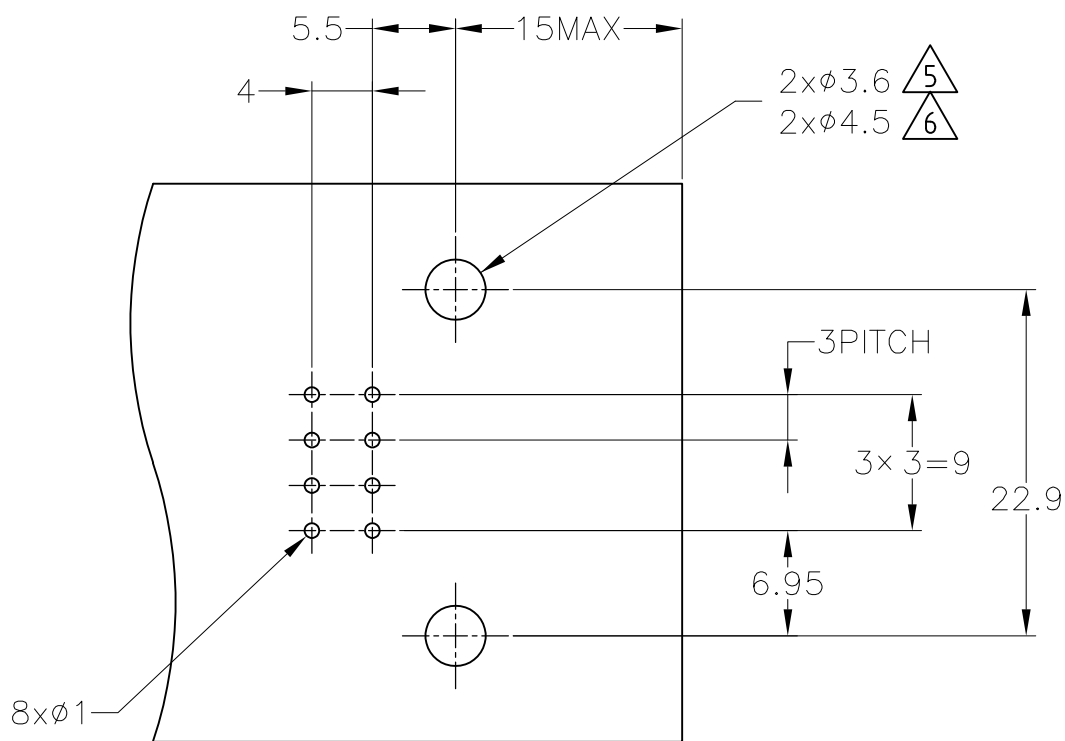
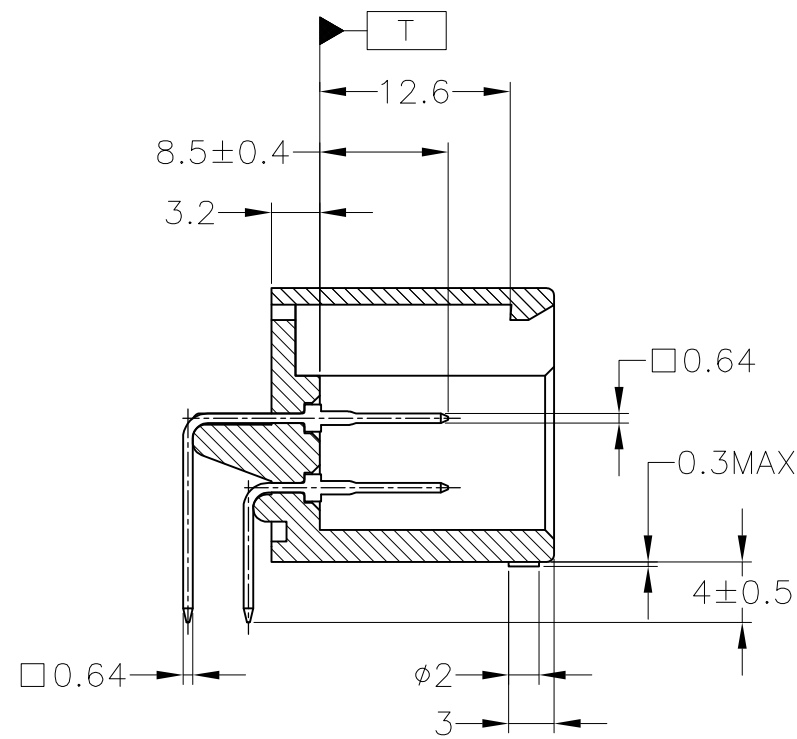
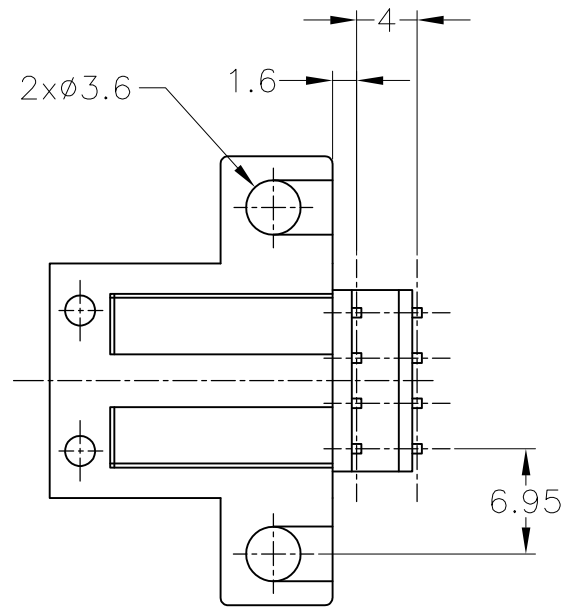
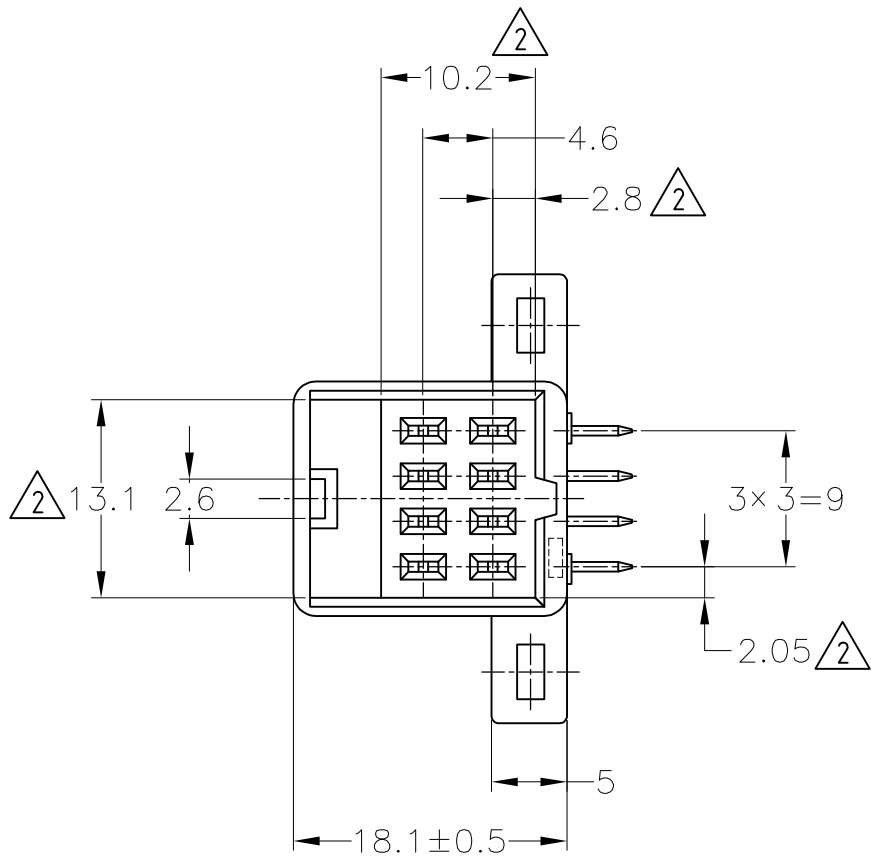
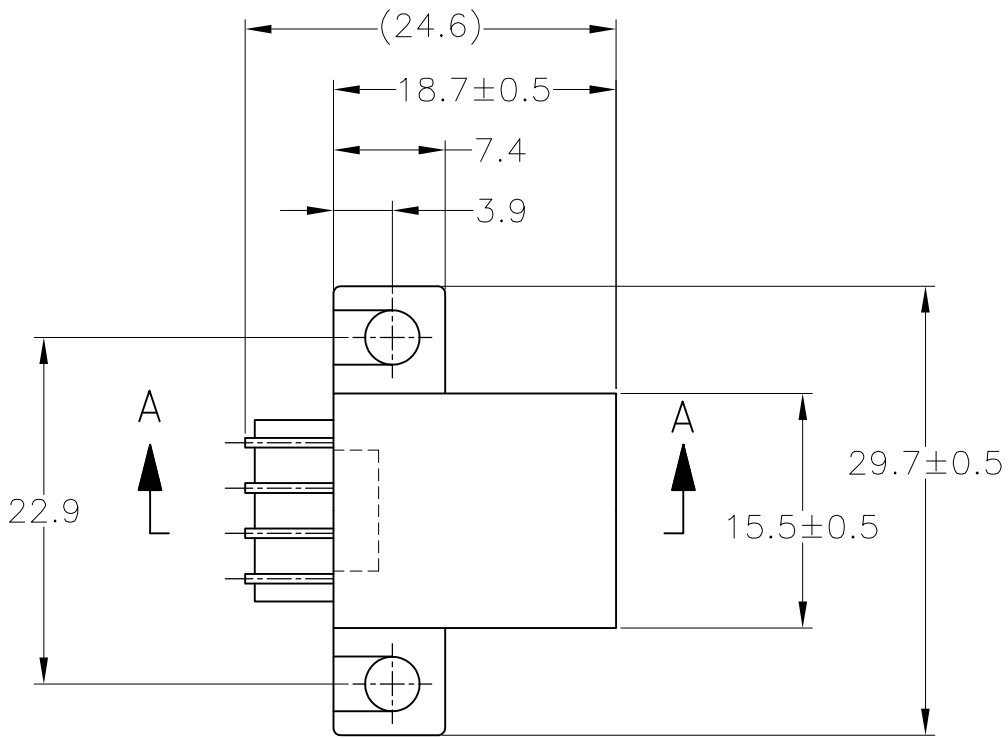
REVISIONS					
P	LTR	DESCRIPTION		DATE	OWN
	D3	OBSOLETE -3	ECR-16-003021	16AUG16	KF
					HY

D

C

B

A


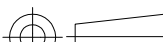
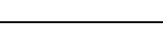


プリント基板取付穴寸法 ; 公差±0.1
(MOUNTING DIMENSIONS FOR P.C.B. ; TOLERANCE ±0.1)

- プリント基板にポストの変形なく挿入可能なこと。
- △ T 面より 2mm の範囲で測定
- 嵌合する相手ハウジング型番 172246, 172856
- 適用製品規格 ; 108-5124
- △ プリント基板の取付は呼び径 3 のねじを使用する。
- △ タッピンねじでプリント基板に固定する場合は、JIS B1115, B1122
タッピンねじ なべ 1 種又は 4 種 呼び径 4 の長さ 8mm 以上による。

- MUST BE INSERTED TO P.C.B. WITHOUT POST DEFORMATION.
- △ MUST BE KEPT BETWEEN T AND 2.
- MATING PLUG HOUSING ; 172246, 172856
- PRODUCT SPECIFICATION ; 108-5124
- △ RECOMMENDED MOUNTING SCREW ; DIAMETER 3.
- △ RECOMMENDED MOUNTING SCREW ; JIS B1115 OR B1122
PAN HEAD TAPPING SCREW, CLASS 1 OR 4, DIAMETER 4, LENGTH 8.

OBSOLETE	SELECTIVE-TIN (MATTE)	SELECTIVE GOLD	BLACK	5172244-3
	TIN-LEAD	SELECTIVE GOLD	BLACK	172244-3
	SELECTIVE-TIN	PRE-TIN	BLACK	172244-2
	SELECTIVE-TIN (MATTE)	SELECTIVE-TIN (BRIGHT)	BLACK	172244-1
	SOLDERING SIDE 半田付け部	CONTACT SIDE 接触部側	COLOR 色	PART NUMBER 製品型番
CONTACT FINISH コンタクト仕上				

THIS DRAWING IS A CONTROLLED DOCUMENT.		DWN T.SHINOHARA	10FEB06	 TE Connectivity				
DIMENSIONS: 単位 : 耗 mm		CHK K.BETSUI	10FEB06					
		TOLERANCES UNLESS OTHERWISE SPECIFIED: 一般公差	APVD K.BETSUI	10FEB06	NAME 名称			
		0 PLC ± 1 PLC ± - 2 PLC ± - 3 PLC ± - 4 PLC ± - ANGLES ± -	PRODUCT SPEC 製品規格 SEE NOTE 4					
		MATERIAL 材料 HOUSING: 66NYLON POST : COPPER ALLOY	APPLICATION SPEC 取付適用規格 —	SIZE A2	CAGE CODE 00779	DRAWING NO 番号 C-172244	RESTRICTED TO —	
			WEIGHT 6.5 g					
一般公差 (GENERAL TOLERANCE) 10% 超入 10%以下 : ±0.2 30% 超入 100%以下 : ±0.25 角 度 : ±3°		SEE TABLE		CUSTOMER DRAWING		SCALE 尺度 2:1	SHEET 1 of 1	REV D3

172244

A