



Chipsmall Limited consists of a professional team with an average of over 10 year of expertise in the distribution of electronic components. Based in Hongkong, we have already established firm and mutual-benefit business relationships with customers from,Europe,America and south Asia,supplying obsolete and hard-to-find components to meet their specific needs.

With the principle of “Quality Parts,Customers Priority,Honest Operation,and Considerate Service”,our business mainly focus on the distribution of electronic components. Line cards we deal with include Microchip,ALPS,ROHM,Xilinx,Pulse,ON,Everlight and Freescale. Main products comprise IC,Modules,Potentiometer,IC Socket,Relay,Connector.Our parts cover such applications as commercial,industrial, and automotives areas.

We are looking forward to setting up business relationship with you and hope to provide you with the best service and solution. Let us make a better world for our industry!



Contact us

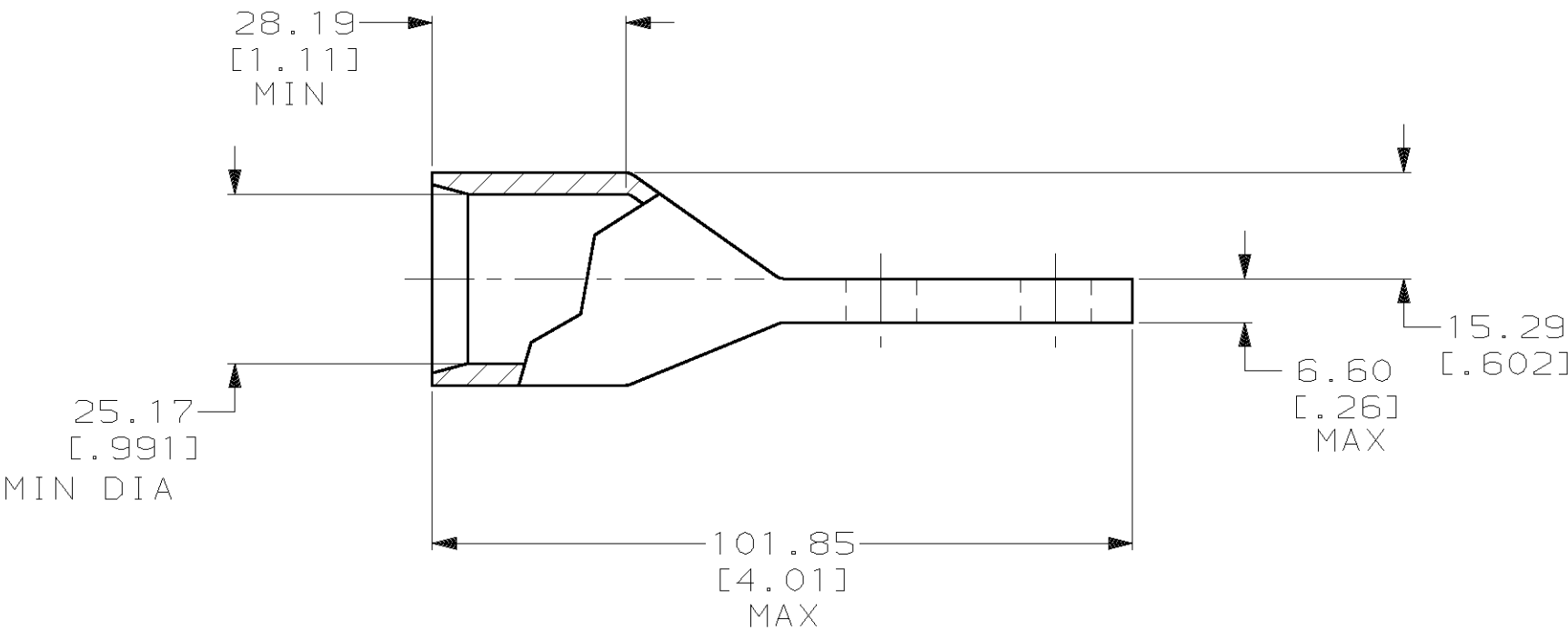
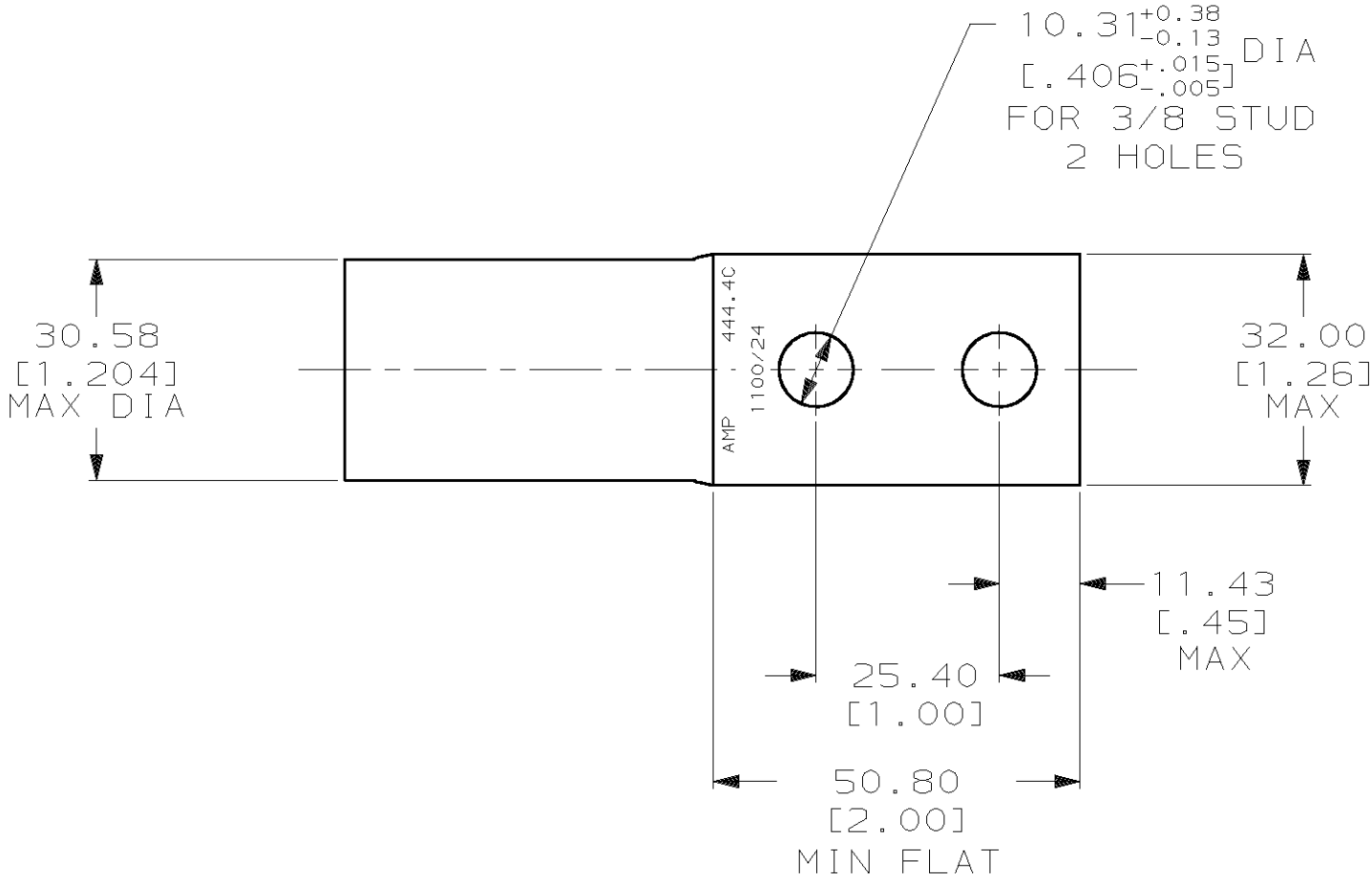
Tel: +86-755-8981 8866 Fax: +86-755-8427 6832

Email & Skype: info@chipsmall.com Web: www.chipsmall.com

Address: A1208, Overseas Decoration Building, #122 Zhenhua RD., Futian, Shenzhen, China



LOC	DIST	P	F	REVISIONS				
				ZONE	LTR	DESCRIPTION	DATE	APPD
G	86				C	REV PER 0G3A-0561-01	08OCT02	JR



- 1 TIN PL 0.00381 [.000150] MIN THK PER MIL-T-10727
- 2 CRIMP DIES: P/N 46755-2 (500 MCM)
HYDRAULIC HEAD: P/N 69082

						326151-1	
						PART NO	
DO NOT SCALE PRINT. UNLESS SPECIFIED DIMENSIONS IN mm [INCHES] TOLERANCES ON : 2 PLC DEC ± 0.51[.020] 3 PLC DEC ± - ANGLES ± - MATERIAL ANNEALED COPPER ASTM B-75		DR 03/09/90 DK SCHRUM		<div>AMP</div> AMP INCORPORATED Harrisburg, Pa. 17105			
		CHK 24JAN95 MS FEHER					
		APPD 24JAN95 WJ VOCKROTH		NAME TERMINAL, CENTERLINE TONGUE, AMPPOWER TM WIRE SIZE: 444.4 MCM			
		APPD 24JAN95 TL SHUTTER					
		PRODUCT SPEC 108-30200					
FINISH		APPLICATION SPEC		SIZE	CAGE CODE	DRAWING NO	
<div>1</div>		-		C	00779	326151	
		WEIGHT -		SCALE	1:1		SHEET 1 OF 1

