



Chipsmall Limited consists of a professional team with an average of over 10 year of expertise in the distribution of electronic components. Based in Hongkong, we have already established firm and mutual-benefit business relationships with customers from,Europe,America and south Asia,supplying obsolete and hard-to-find components to meet their specific needs.

With the principle of “Quality Parts,Customers Priority,Honest Operation,and Considerate Service”,our business mainly focus on the distribution of electronic components. Line cards we deal with include Microchip,ALPS,ROHM,Xilinx,Pulse,ON,Everlight and Freescale. Main products comprise IC,Modules,Potentiometer,IC Socket,Relay,Connector.Our parts cover such applications as commercial,industrial, and automotives areas.

We are looking forward to setting up business relationship with you and hope to provide you with the best service and solution. Let us make a better world for our industry!



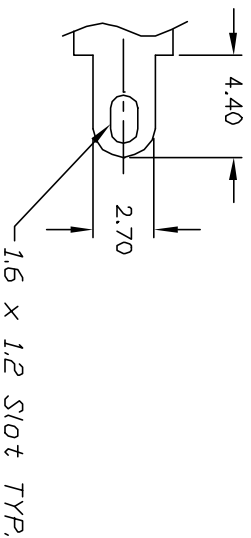
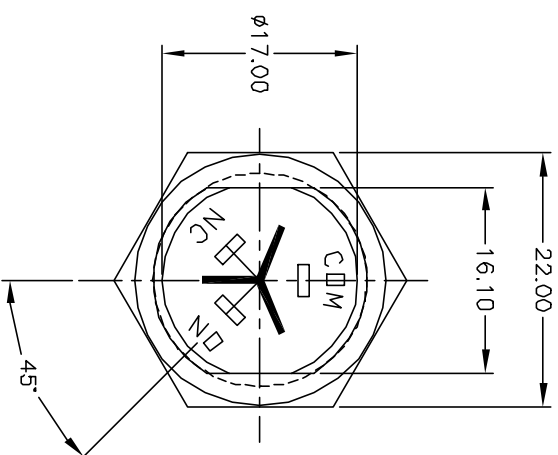
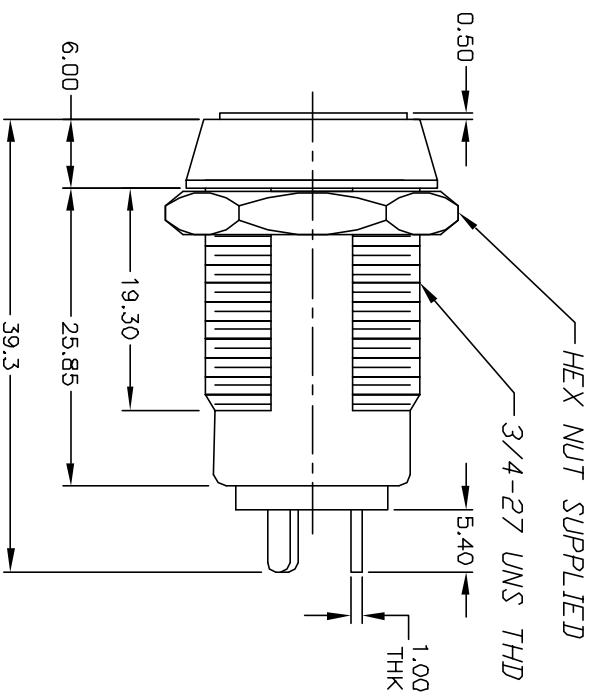
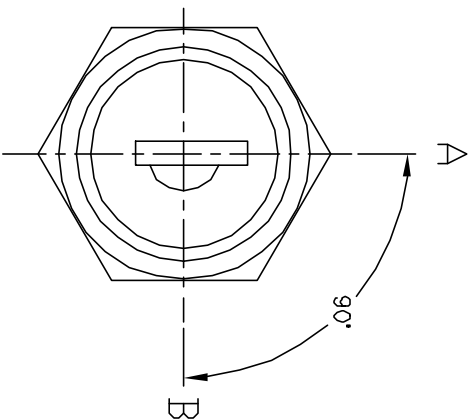
## Contact us

Tel: +86-755-8981 8866 Fax: +86-755-8427 6832

Email & Skype: [info@chipsmall.com](mailto:info@chipsmall.com) Web: [www.chipsmall.com](http://www.chipsmall.com)

Address: A1208, Overseas Decoration Building, #122 Zhenhua RD., Futian, Shenzhen, China



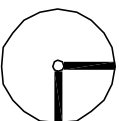


TERMINAL DETAIL  
SCALE 2X

NOTES:

1. ALL DIMENSIONS IN MM
2. GENERAL TOLERANCE: X.X=±0.4  
X.XX=±0.25
3. TERM. NOS. FOR REFERENCE ONLY.
4. RATING: 4A @125VAC, 2A @250VAC
5. CONTACT RESISTANCE: 10mILLI-OHMS
6. DIELECTRIC STRENGTH: 1500 VAC-1Minute
7. MATERIALS:

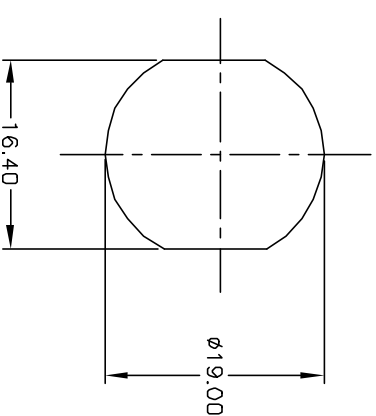
HOUSING: ZINC ALLOY DIE CAST  
CYLINDER: ZINC ALLOY W/CHROME PLATING  
TERMINAL AND CONTACTS: SILVER PLATING  
KEYS 125 (2): BRASS W/NICKEL PLATING  
DOUBLE CUT REVERSIBLE



CIRCUIT: SPDT  
CONTACT CONFIGURATION

SWITCH FUNCTION	
A	B
↕	→
DN	DN

- LEGEND
- = OFF POSITION
  - = INDICATES KEY PULL
  - ⊗ = INDICATES NO KEY PULL



RECOMMENDED PANEL CUTOUT

KEYS 125 (2): BRASS W/NICKEL PLATING DOUBLE CUT REVERSIBLE					<b>E-SWITCH®</b>				
					TITLE  K0118A-125				
A	11376	RELEASED FOR PRODUCTION	4/4/01	CJB	SCALE 1.5:1	DATE 4/4/01	DR CJB	DWG K200117	REV A
REV.	ECN No.	DESCRIPTION	DATE	CHKD					
THE INFORMATION CONTAINED IN THIS DOCUMENT IS PROPRIETARY TO E-SWITCH AND IS NOT TO BE COPIED OR TRANSFERRED									

**E-SWITCH®**

K01184-125