



Chipsmall Limited consists of a professional team with an average of over 10 year of expertise in the distribution of electronic components. Based in Hongkong, we have already established firm and mutual-benefit business relationships with customers from,Europe,America and south Asia,supplying obsolete and hard-to-find components to meet their specific needs.

With the principle of “Quality Parts,Customers Priority,Honest Operation,and Considerate Service”,our business mainly focus on the distribution of electronic components. Line cards we deal with include Microchip,ALPS,ROHM,Xilinx,Pulse,ON,Everlight and Freescale. Main products comprise IC,Modules,Potentiometer,IC Socket,Relay,Connector.Our parts cover such applications as commercial,industrial, and automotives areas.

We are looking forward to setting up business relationship with you and hope to provide you with the best service and solution. Let us make a better world for our industry!



Contact us

Tel: +86-755-8981 8866 Fax: +86-755-8427 6832

Email & Skype: info@chipsmall.com Web: www.chipsmall.com

Address: A1208, Overseas Decoration Building, #122 Zhenhua RD., Futian, Shenzhen, China



Flange - SACC-MSQ-M12MS-25-3,2 SCO - 1419959

Please be informed that the data shown in this PDF Document is generated from our Online Catalog. Please find the complete data in the user's documentation. Our General Terms of Use for Downloads are valid (<http://download.phoenixcontact.com>)

Flange housing, 25 mm x 25 mm



Key commercial data

Packing unit	1 PCE
Weight per Piece (excluding packing)	20.0 GRM
Custom tariff number	85389099
Country of origin	Germany

Technical data

Ambient conditions

Ambient temperature (operation)	-25 °C ... 85 °C (Plug / socket)
---------------------------------	----------------------------------

General

Standards/regulations	M12 connector IEC 61076-2-101
Mounting type	Front mounting, square flange 25 mm side length Square flange

Material

Material, knurls	Zinc die-cast, nickel-plated
Sealing material	NBR

Classifications

eCl@ss

eCl@ss 4.0	27250313
eCl@ss 4.1	27250313
eCl@ss 5.0	27143423

Flange - SACC-MSQ-M12MS-25-3,2 SCO - 1419959

Classifications

eCl@ss

eCl@ss 5.1	27143423
eCl@ss 6.0	27143423
eCl@ss 7.0	27449001
eCl@ss 8.0	27449001

ETIM

ETIM 4.0	EC002608
ETIM 5.0	EC002608

UNSPSC

UNSPSC 6.01	31251501
UNSPSC 7.0901	31251501
UNSPSC 11	31251501
UNSPSC 12.01	31251501
UNSPSC 13.2	31251501

Approvals

Approvals


Approvals

GOST / GOST

Ex Approvals

Approvals submitted

Approval details

GOST 
--

GOST 
--

Flange - SACC-MSQ-M12MS-25-3,2 SCO - 1419959

Accessories

Accessories

Circular connectors (device side)

Contact carriers - SACC-MCI-M12MSD-4CON/0,5 - 1440821



Assembled contact carrier and insulating body with 0.5 m litz wires and crimp contacts

Contact carriers - SACC-MCI-M12MS-4CON - 1440931



4-pos. contact carrier, with splice ring, A-coded

Contact carriers - SACC-MCI-M12MSD-4CON - 1440944



4-pos. contact carrier, with splice ring, D-coded

Contact carriers - SACC-MCI-M12MS-5CON - 1419988



5-pos. contact carrier, with splice ring, A-coded

Contact carriers - SACC-MCI-M12MSB-5CON - 1440915



5-pos. contact carrier, with splice ring, B-coded

Flange - SACC-MSQ-M12MS-25-3,2 SCO - 1419959

Accessories

Contact carriers - SACC-MCI-M12MS-8CON - 1440928



8-pos. contact carrier, with splice ring

Contact insert

Contact carriers - SACC-MCI-M12MS-4CON/0,5 - 1440805



Assembled contact carrier and insulating body with 0.5 m litz wires and crimp contacts

Contact carriers - SACC-MCI-M12MS-5CON/0,5 - 1440818



Assembled contact carrier and insulating body with 0.5 m litz wires and crimp contacts

Contact carriers - SACC-MCI-M12MSB-5CON/0,5 - 1440759



Assembled contact carrier and insulating body with 0.5 m litz wires and crimp contacts

Contact carriers - SACC-MCI-M12MS-8CON/0,5 - 1457827

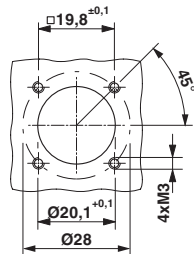


Assembled contact carrier and insulating body with 0.5 m litz wires and crimp contacts

Flange - SACC-MSQ-M12MS-25-3,2 SCO - 1419959

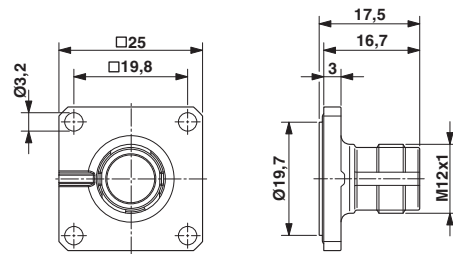
Drawings

Dimensioned drawing



Installation dimensions

Dimensioned drawing



M12 flush-type plug, square flange