



Chipsmall Limited consists of a professional team with an average of over 10 year of expertise in the distribution of electronic components. Based in Hongkong, we have already established firm and mutual-benefit business relationships with customers from,Europe,America and south Asia,supplying obsolete and hard-to-find components to meet their specific needs.

With the principle of “Quality Parts,Customers Priority,Honest Operation,and Considerate Service”,our business mainly focus on the distribution of electronic components. Line cards we deal with include Microchip,ALPS,ROHM,Xilinx,Pulse,ON,Everlight and Freescale. Main products comprise IC,Modules,Potentiometer,IC Socket,Relay,Connector.Our parts cover such applications as commercial,industrial, and automotives areas.

We are looking forward to setting up business relationship with you and hope to provide you with the best service and solution. Let us make a better world for our industry!



Contact us

Tel: +86-755-8981 8866 Fax: +86-755-8427 6832

Email & Skype: info@chipsmall.com Web: www.chipsmall.com

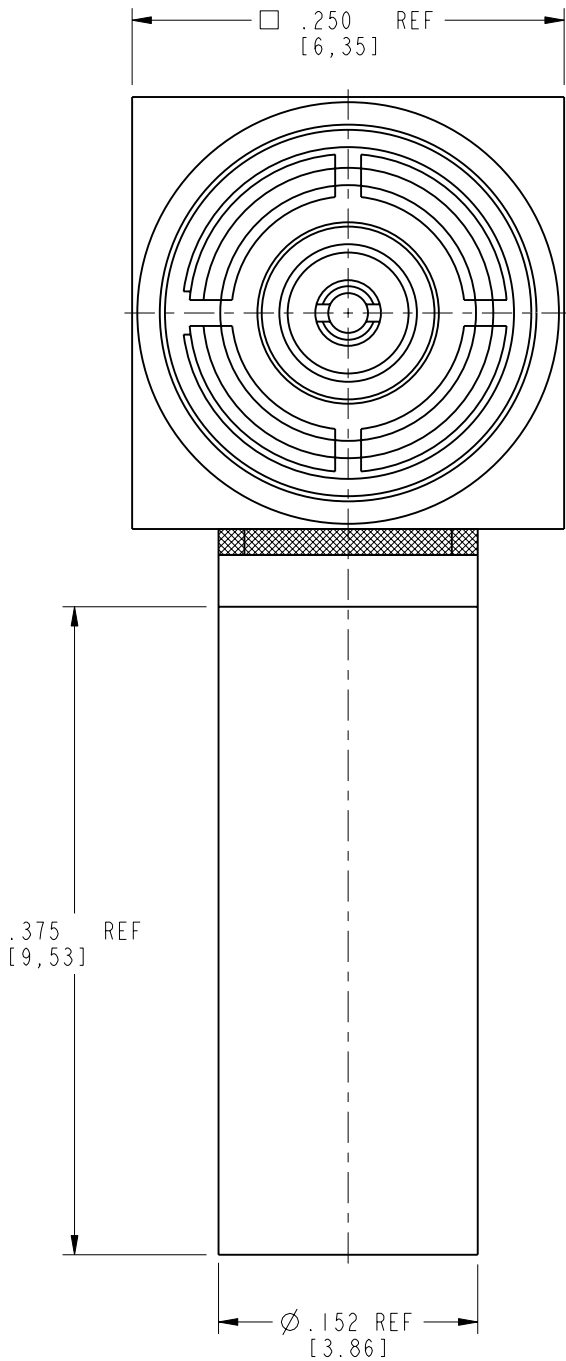
Address: A1208, Overseas Decoration Building, #122 Zhenhua RD., Futian, Shenzhen, China



NOTES:

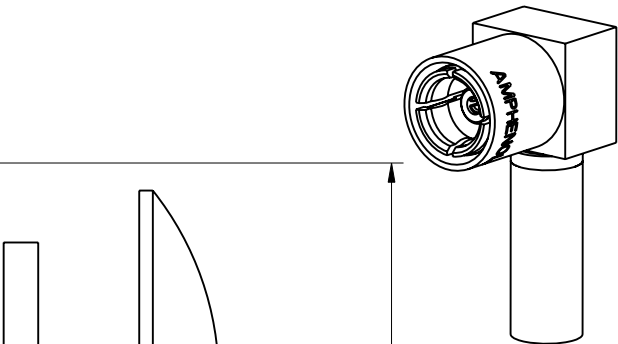
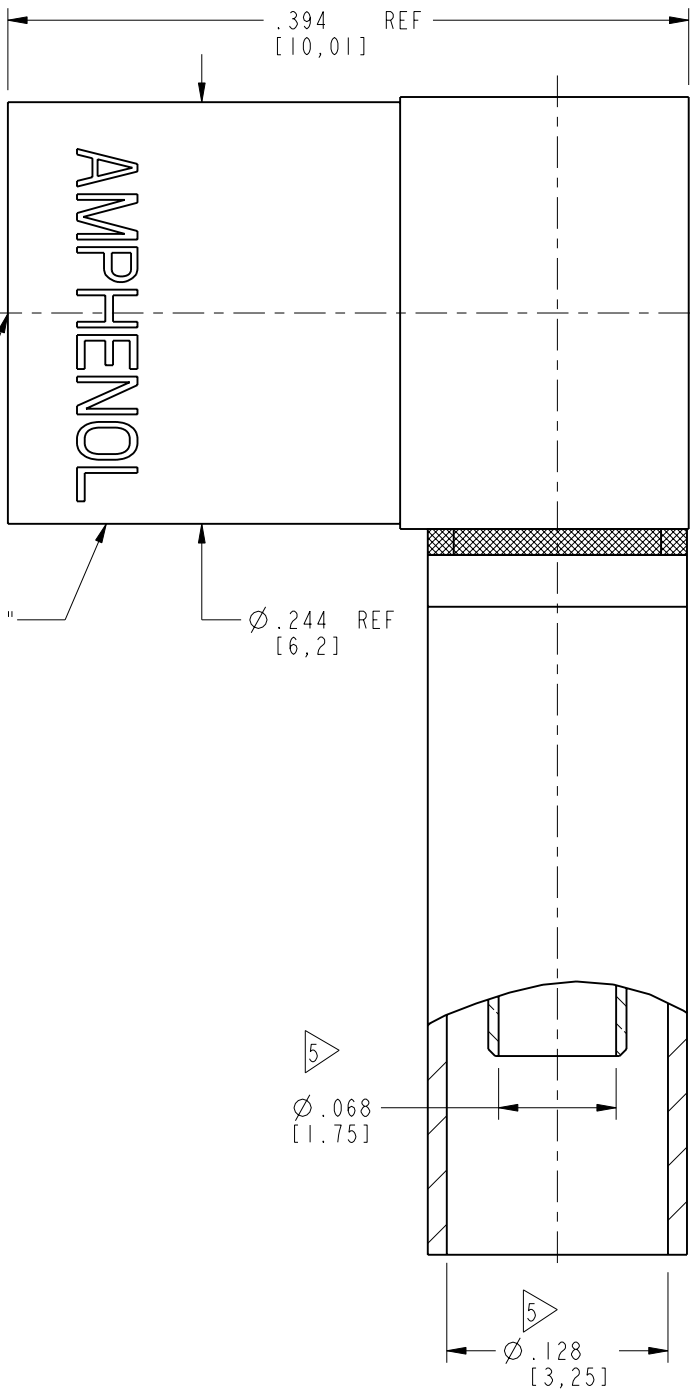
1. MATERIALS AND FINISHES:
BODY - BRASS,GOLD PLATING
CONTACT - BeCu,GOLD PLATING
INSULATORS - PTFE,NATURAL
BODIES & CAP - BRASS,NICKEL PLATING
RETAINING RING - BeCu,NICKEL PLATING
FERRULE - COPPER,NICKEL PLATING
2. MECHANICAL:
A. DURABILITY: 500 CYCLES MIN.
B. TEMPERATURE RANGE: -65° C TO +165° C
3. PACKAGING:
A. QUANTITY: SINGLE PACK
B. MARKING: BAG TO BE MARKED
"AMPHENOL RF, 903-429P-51A, AND DATE CODE"
4. FOR CABLE ASSEMBLY INSTRUCTIONS SEE AMPHENOL SPECIFICATION 349-50521 SHEET 5.

5> SHOWS CABLE ENTRY DIMENSIONS.



INTERFACE PER
MIL-STD-348
SERIES : SMB PLUG
50 OHMS

STAMP "AMPHENOL"



SCALE 2.500

CUSTOMER OUTLINE DRAWING
ALL OTHER SHEETS ARE FOR INTERNAL USE ONLY

UNLESS OTHERWISE SPECIFIED, DIMENSIONS ARE IN METRIC AND TOLERANCES ARE:
<0.5mm 0.5 - 6mm 6 - 30mm 30 - 120mm ANGLES
± 0.05mm ±0.1mm ±0.2mm ± 0.3mm ±1°

NOTICE - These drawings, specifications, or other data (1) are, and remain the property of Amphenol corp. (2) must be returned upon request; and (3) are confidential and not to be disclosed to any person other than those to whom they are given by Amphenol Corp. the furnishing of these drawings, specifications, or other data by Amphenol Corp., or to any other person to anyone for any purpose is not to be regarded by implication or otherwise in any manner licensing, granting rights to permitting such holder or any other person to manufacture, use or sell any product, process or design, patented or otherwise, that may in any way be related to or disclosed by said drawings, specifications, or other data.

MATERIAL

SEE BOM TABLE

REFERENCE

EAR # 111-962530 EAR # 111-963526
615X-1170-100
CONFIGURATION LEVEL: In Work

FINISH

DRAWN
S.DUAN

DATE
30-Apr-15

ENGINEER
RAV

DATE
30-Apr-15

APPROVED
S.HSIEH

DATE
30-Apr-15

CAD FILE

TITLE

SMB RA PLUG CRIMP TYPE
FOR RG 316/U CABLE

SCALE: 9.0:1.0

SHEET 2 OF 2

DWG SIZE
B

REV
E

Amphenol RF

www.amphenolrf.com

DRAWING NO.903-429P-51A

ITEM NO.903-429P-51A

PART NO.903-429P-51A