



Chipsmall Limited consists of a professional team with an average of over 10 year of expertise in the distribution of electronic components. Based in Hongkong, we have already established firm and mutual-benefit business relationships with customers from,Europe,America and south Asia,supplying obsolete and hard-to-find components to meet their specific needs.

With the principle of “Quality Parts,Customers Priority,Honest Operation,and Considerate Service”,our business mainly focus on the distribution of electronic components. Line cards we deal with include Microchip,ALPS,ROHM,Xilinx,Pulse,ON,Everlight and Freescale. Main products comprise IC,Modules,Potentiometer,IC Socket,Relay,Connector.Our parts cover such applications as commercial,industrial, and automotives areas.

We are looking forward to setting up business relationship with you and hope to provide you with the best service and solution. Let us make a better world for our industry!



## Contact us

Tel: +86-755-8981 8866 Fax: +86-755-8427 6832

Email & Skype: [info@chipsmall.com](mailto:info@chipsmall.com) Web: [www.chipsmall.com](http://www.chipsmall.com)

Address: A1208, Overseas Decoration Building, #122 Zhenhua RD., Futian, Shenzhen, China



4

3

2

1

THIS DRAWING IS UNPUBLISHED.

RELEASED FOR PUBLICATION



COPYRIGHT

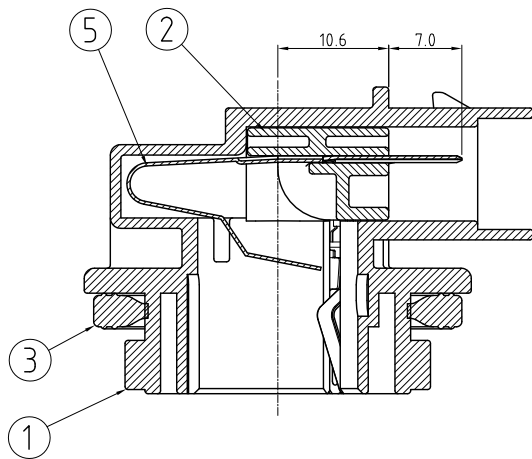
BY TYCO ELECTRONICS CORPORATION. ALL RIGHTS RESERVED.

LOC  
DS

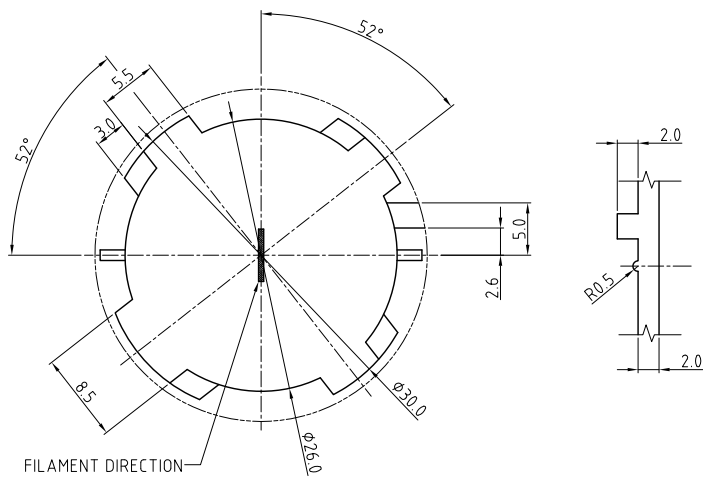
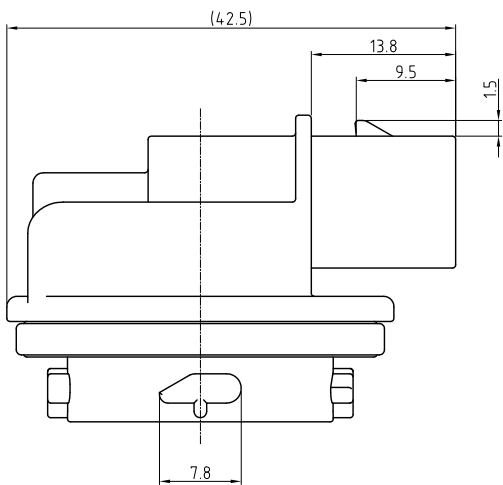
DIST  
—

REVISIONS

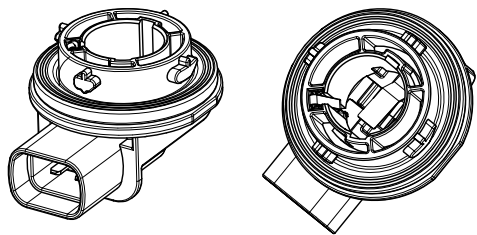
P	LTR	DESCRIPTION	DATE	DWN	APVD
0		RELEASED (FC00-0174-03)	26/DEC/03	YD	CS
A		REVISED (FC00-0055-04)	29/MAR/04	YD	CS
B		REVISED (ECR-12-015233)	28/AUG/12	JM	HG



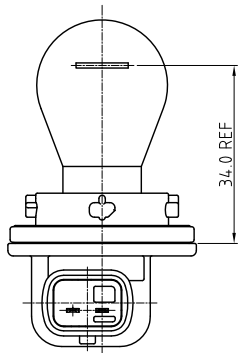
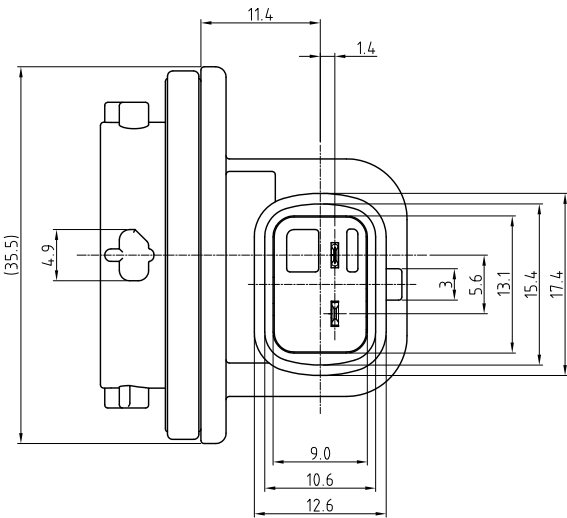
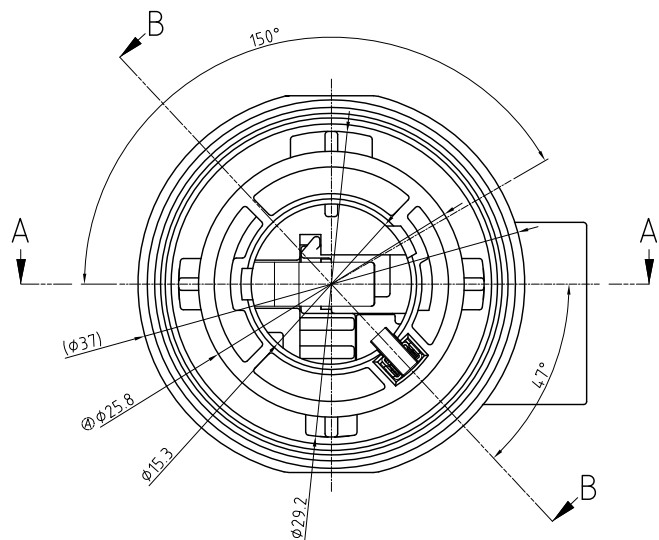
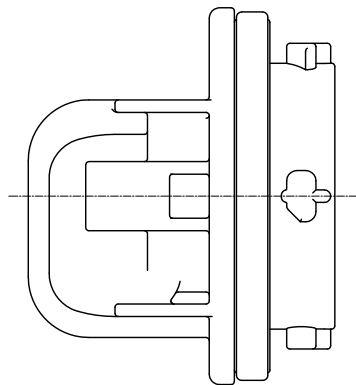
SECTION B-B



BULB POCKET LAYOUT  
(SCALE 2/1)



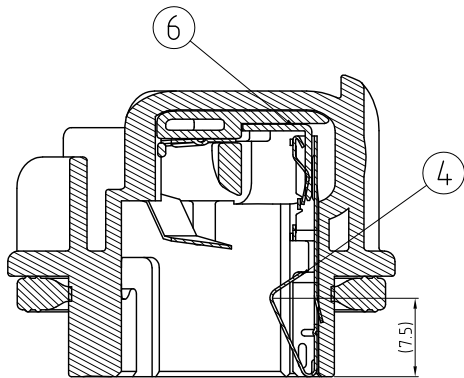
3D-VIEW  
SCALE 1/1



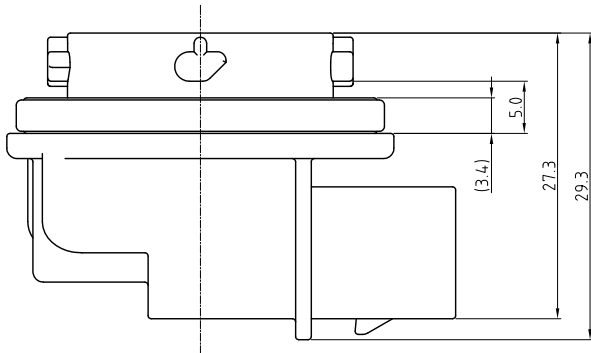
ASSEMBLY VIEW(WITH BULB)  
(SCALE 1/1)

NOTE;


- 0.3 MAX. WARPAGE AND 0.3 MAX. FLASH ARE PERMISSIBLE
- SURFACE DEFECTS ARE NOT ACCEPTABLE AS FOLLOW:  
SINK, WELD LINES, HAIRCRACKS, STAINS & SCORES
- APPLIED PLUG ASSEMBLY P/N: 936184



SECTION A-A



control priority dimension; ■ CRITICAL, ☒ MAJOR, □ MINOR <small>THIS DRAWING IS A CONTROLLED DOCUMENT FOR TYCO ELECTRONICS CORPORATION IT IS SUBJECT TO CHANGE AND THE CONTROLLING ENGINEERING ORGANIZATION SHOULD BE CONTACTED FOR THE LATEST REVISION.</small>	
DIMENSIONS: MM	TOLERANCES UNLESS OTHERWISE SPECIFIED:  DECIMALS: ± 0.3 ANGLES: ± 3°
3rd ANGLE PROJECTION	FINISH

					ASSY P/N	0-936716-1	0-936716-3
6	EARTH TML FOR BULB HODER 2P	0-936920-1	CuNiSi Alloy	-		1	1
5	SOCKET TERMINAL	0-936919-1	Ⓢ C5210R	-		1	1
4	RECP. TERMINAL	0-936918-1	CuNiSi Alloy	-		1	1
3	O-RING	0-936817-1	SILICONE(LSR)	GRAY(RAL 7004)		1	1
2	BLOCK HSG FOR BULB HOLDER 2P	0-936718-2	PBT+GF10	BLACK(RAL 9011)		1	1
1	BULB HOLDER 2POS HSG	0-936717-3	PBT	GRAY(RAL 7036)		-	1
	BULB HOLDER 2POS HSG	0-936717-1	PBT	IVORY(RAL 1015)		1	-
NO.	DESCRIPTION	P/N	MATERIAL	COLOR	Q'TY		
DWN : JM JEON		<div> TE Connectivity</div> <div>NAME</div> <div>BULB HOLDER 2P ASS'Y RIGHT ANGLE TYPE FOR AMBER BULB</div> <div>SIZE    CAGE CODE    DRAWING NO</div> <div>A2    00779    Ⓒ= 936716</div> <div>RESTRICTED TO</div>					
CHK : JW JUNG							
APVD : HG CHO							
PRODUCT SPEC							
APPLICATION SPEC							
WEIGHT							
				SCALE	2/1	SHEET	1 OF 1
				REV B			