



Chipsmall Limited consists of a professional team with an average of over 10 year of expertise in the distribution of electronic components. Based in Hongkong, we have already established firm and mutual-benefit business relationships with customers from,Europe,America and south Asia,supplying obsolete and hard-to-find components to meet their specific needs.

With the principle of “Quality Parts,Customers Priority,Honest Operation,and Considerate Service”,our business mainly focus on the distribution of electronic components. Line cards we deal with include Microchip,ALPS,ROHM,Xilinx,Pulse,ON,Everlight and Freescale. Main products comprise IC,Modules,Potentiometer,IC Socket,Relay,Connector.Our parts cover such applications as commercial,industrial, and automotives areas.

We are looking forward to setting up business relationship with you and hope to provide you with the best service and solution. Let us make a better world for our industry!



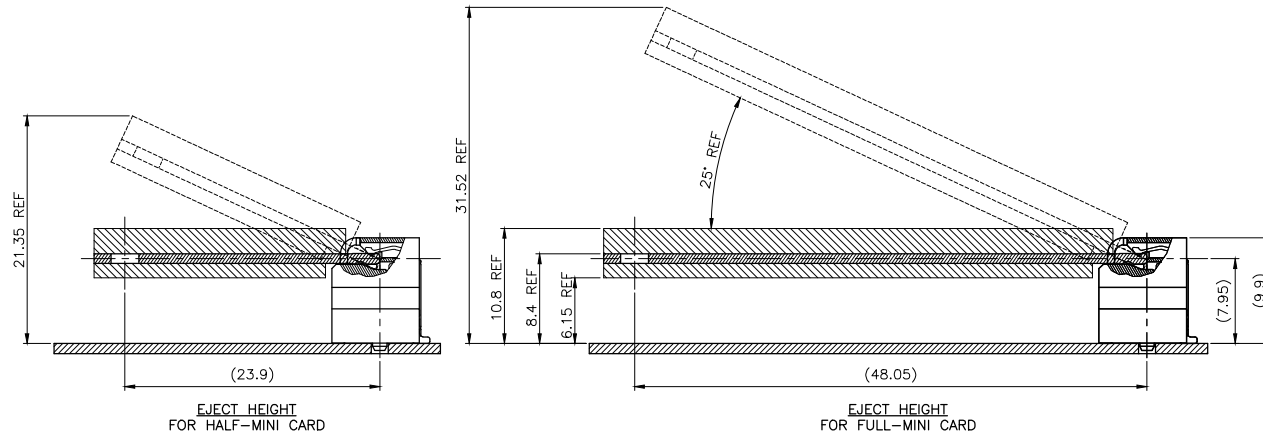
Contact us

Tel: +86-755-8981 8866 Fax: +86-755-8427 6832

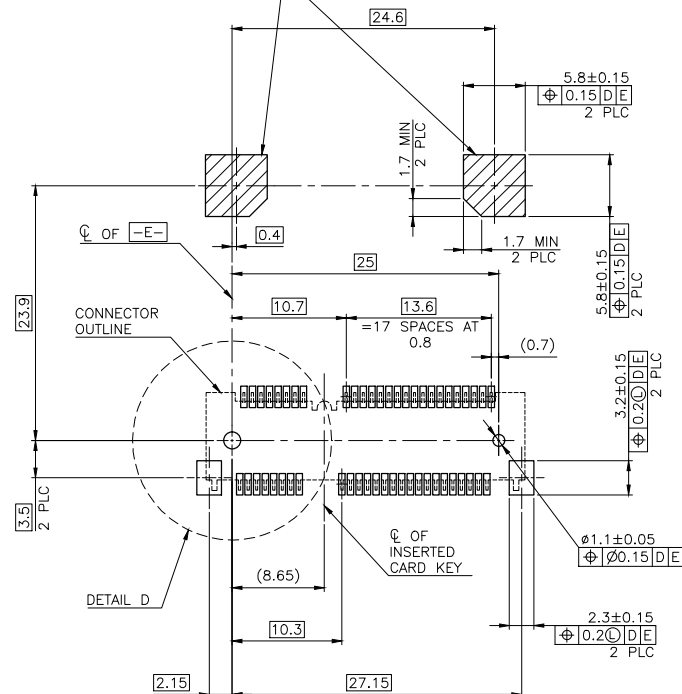
Email & Skype: info@chipsmall.com Web: www.chipsmall.com

Address: A1208, Overseas Decoration Building, #122 Zhenhua RD., Futian, Shenzhen, China

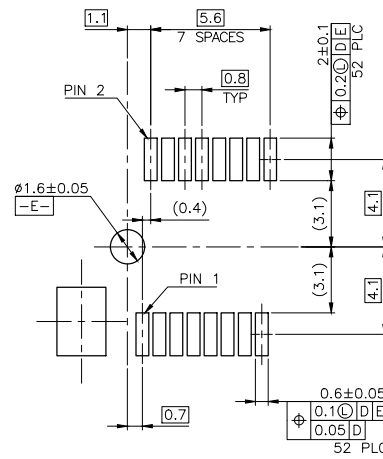




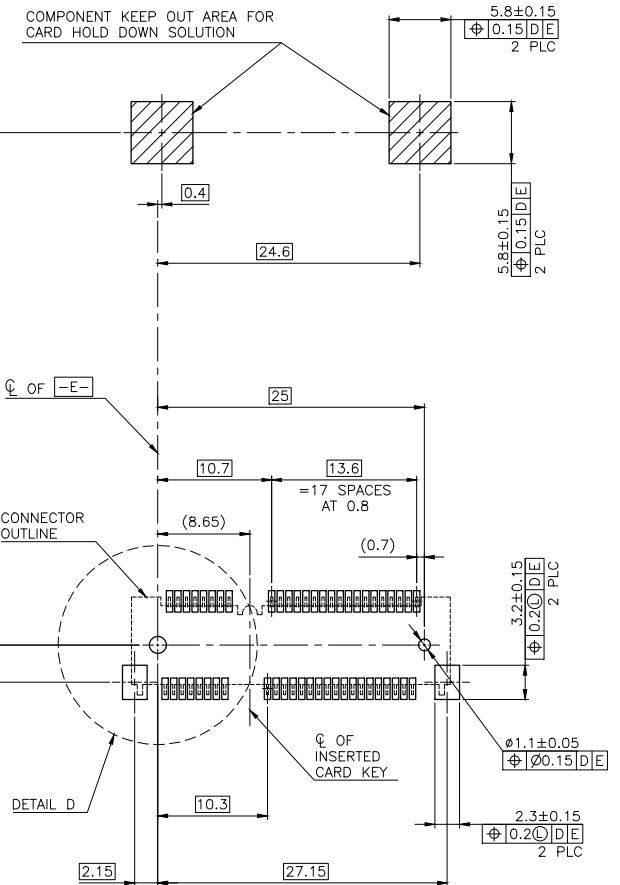
COMPONENT KEEP OUT AREA FOR CARD HOLD DOWN SOLUTION



—D— IS THE TOP SURFACE OF PCB.
 RECOMMENDED P.C. BOARD PATTERN LAYOUT
 FOR HALF-MINI-ONLY CONNECTOR
 (TOP VIEW)

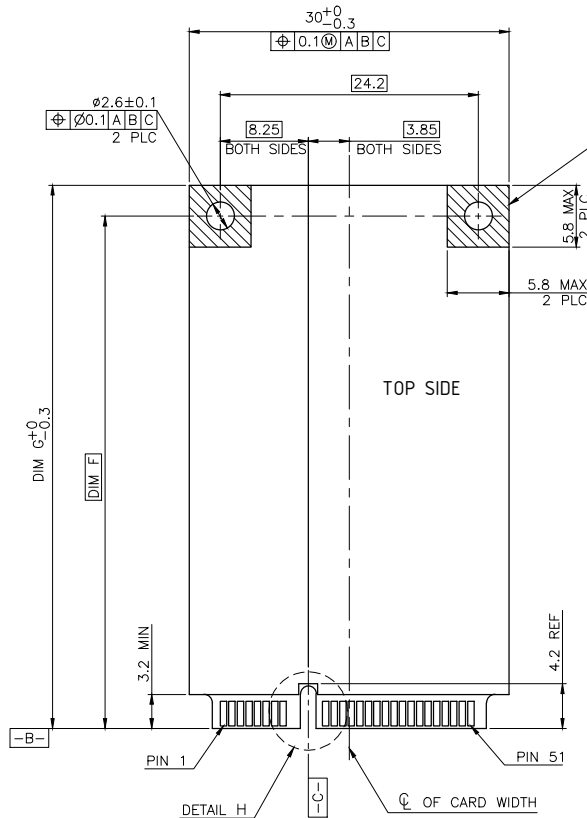


DETAIL D
 SCALE 2:1

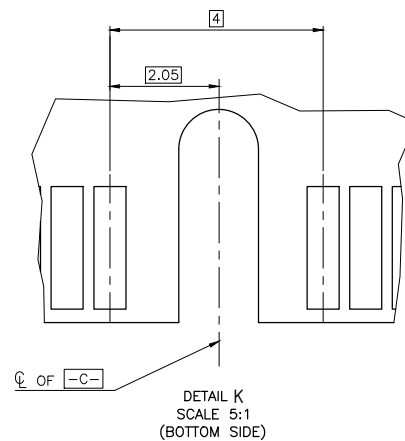
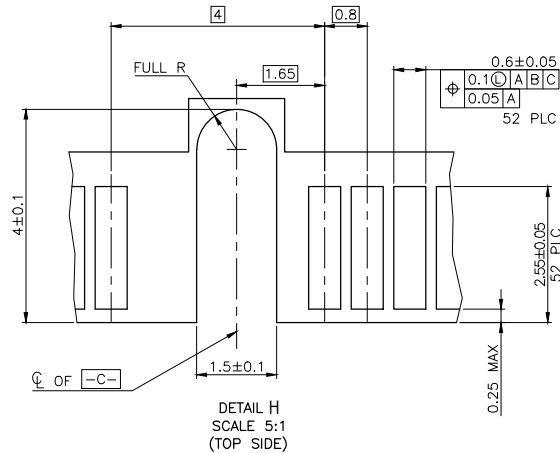


—D— IS THE TOP SURFACE OF PCB.
 RECOMMENDED P.C. BOARD PATTERN LAYOUT
 FOR FULL-MINI-ONLY CONNECTOR
 (TOP VIEW)

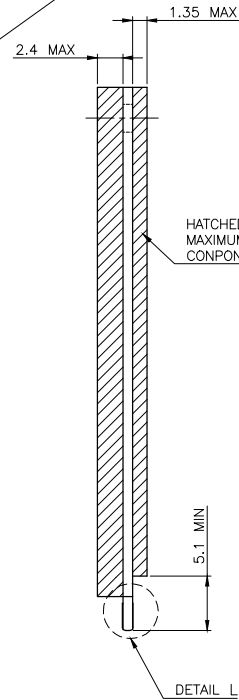
THIS DRAWING IS A CONTROLLED DOCUMENT.		OWN		TE Connectivity	
DIMENSIONS: MM		CHK		NAME	
TOLERANCES UNLESS OTHERWISE SPECIFIED:		APVD		PCI EXPRESS MINI CARD CONNECTOR, 9.9 MM HEIGHT	
0 PLC ±		PRODUCT SPEC		SIZE	
1 PLC ±		APPLICATION SPEC		CAGE CODE	
2 PLC ±		WEIGHT		DRAWING NO	
3 PLC ±		CUSTOMER DRAWING		A200779	
4 PLC ±		SCALE		2 of 4	
ANGLES ±		SHEET		REV C1	



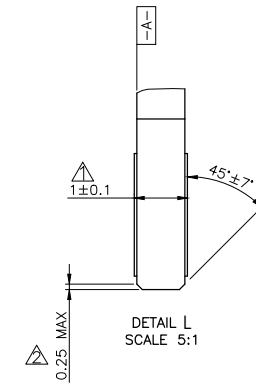
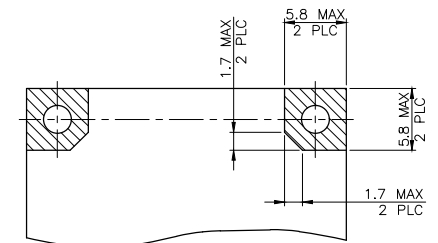
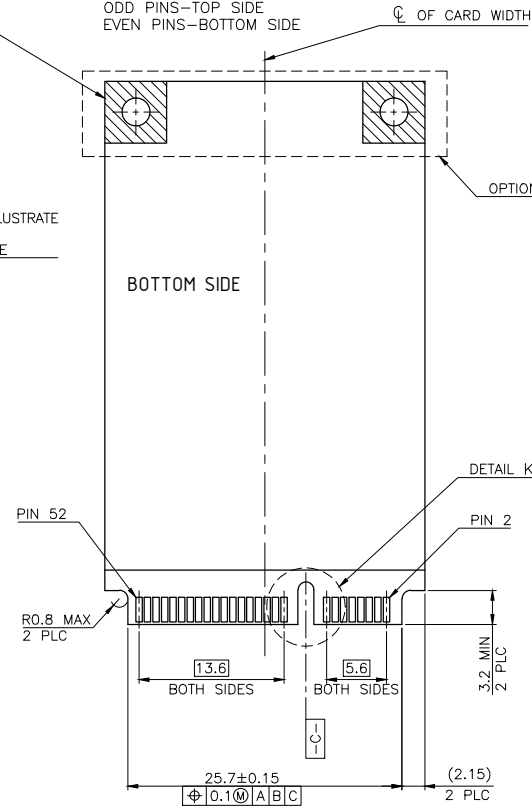
DIM F	DIM G	
48.05	50.95	FULL-MINI CARD
23.9	26.8	HALF-MINI CARD



COMPONENT AND ROUTING (ALL LAYERS)
 KEEP OUT AREA FOR HOLD DOWN SOLUTIONS



PIN NUMBERING REFERENCE:
 ODD PINS—TOP SIDE
 EVEN PINS—BOTTOM SIDE



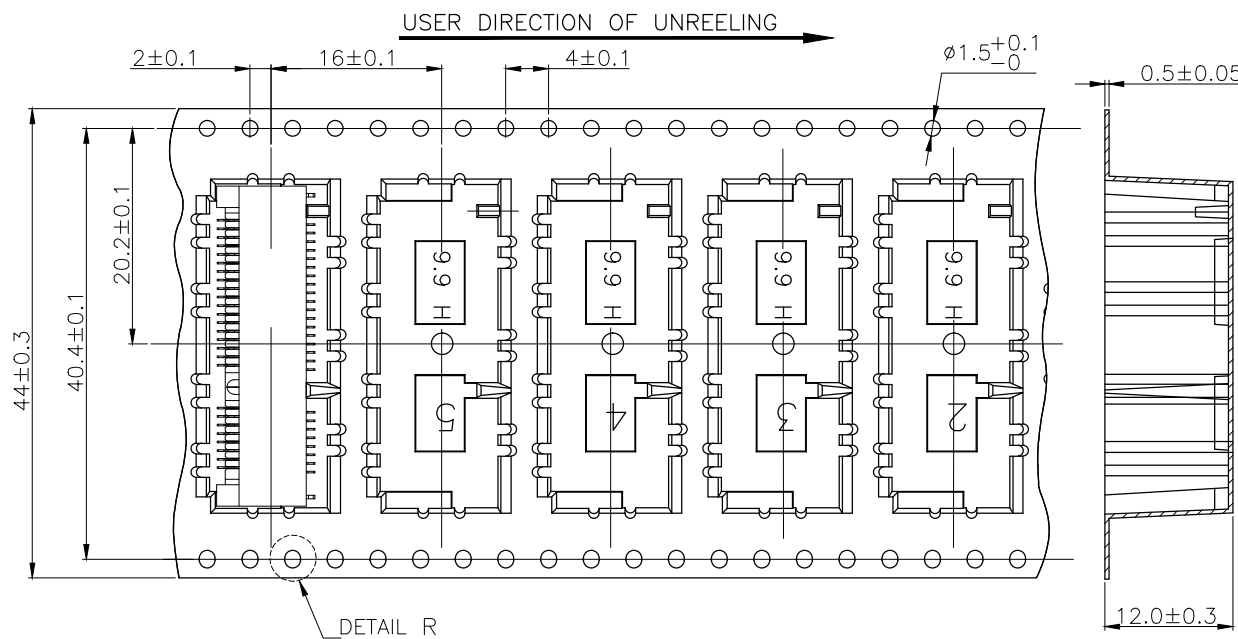
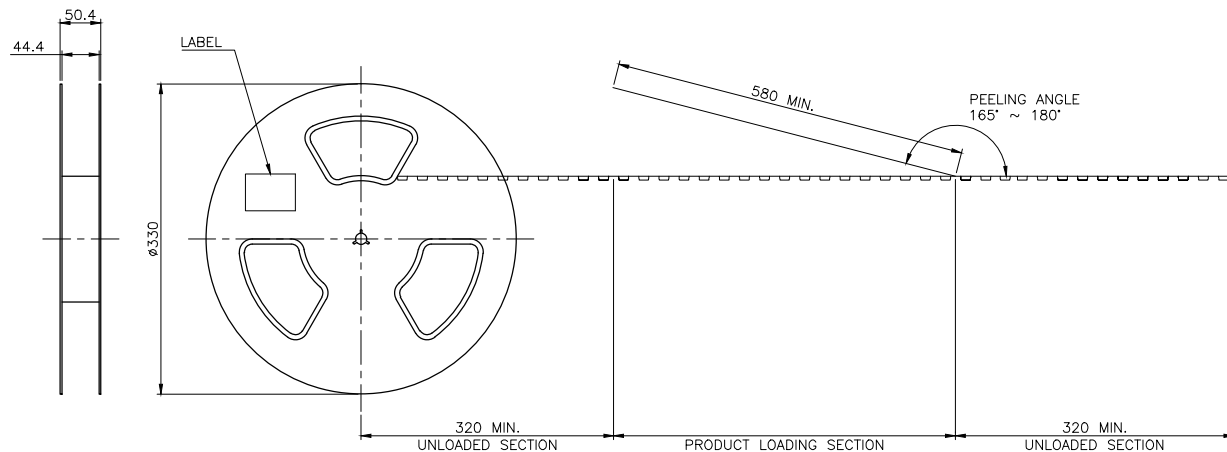
NOTES:

- △ CARD THICKNESS APPLIES ACROSS TABS AND INCLUDES PLATING AND/OR METALLIZATION.
- △ EDGE BEVEL MUST BE PRESENT AND FREE OF CUTTING BURRS FROM PCB AND CONTACT MATERIALS.

THIS DRAWING IS A CONTROLLED DOCUMENT.		DWN		CHK		APVD		NAME	
DIMENSIONS: MM		TOLERANCES UNLESS OTHERWISE SPECIFIED:		PRODUCT SPEC		APPLICATION SPEC		WEIGHT	
		0 PLC ± 1 PLC ± 2 PLC ± 3 PLC ± 4 PLC ± ANGLES ±		—		—		—	
MATERIAL		FINISH		—		—		—	
CUSTOMER DRAWING				SCALE		SHEET		REV	
A2 00779 C= 2041216				—		3 of 4		C1	

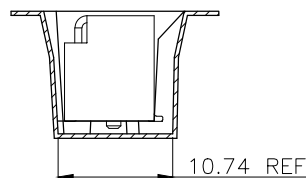
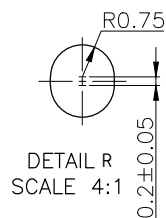
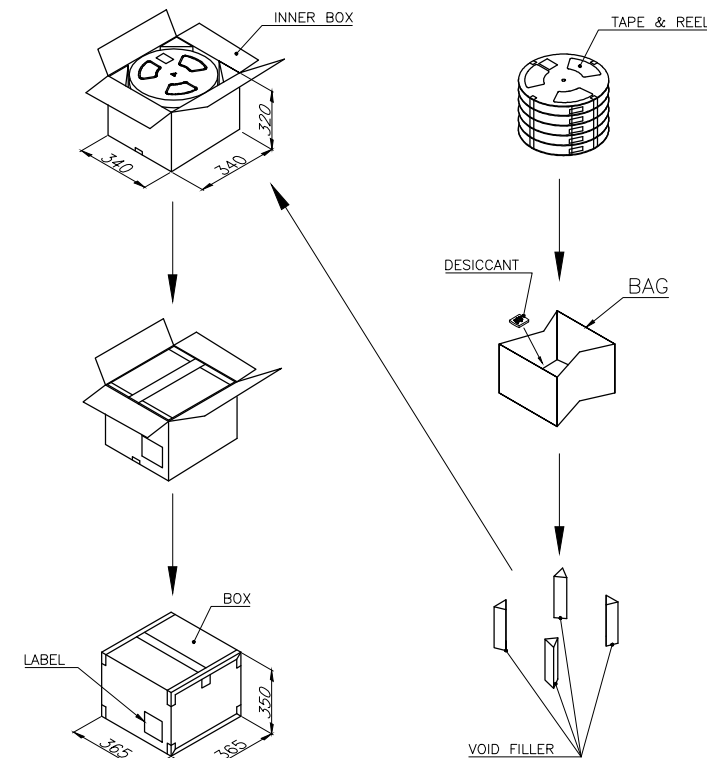
TE TE Connectivity

PCI EXPRESS MINI CARD CONNECTOR,
 9.9 MM HEIGHT



NOTES:

1. MATERIAL:
 BOX: FIBREBOARD, CORRUGATED, DOUBLE WALL.
 COVER TAPE: POLYSTYRENES, 120°C HEAT-RESISTANT TEMPERATURE, TRANSPARENT COLOR.
 CARRIER TAPE: POLYSTYRENES, 120°C HEAT-RESISTANT TEMPERATURE, TRANSPARENT COLOR.
 REEL: HIPS, 70°C HEAT-RESISTANT TEMPERATURE, BLUE COLOR.
 BAG: POLYETHYLENES, 100°C HEAT-RESISTANT TEMPERATURE, TRANSPARENT COLOR.
2. EACH BAG SHALL BE INCLUDED DESICCANT.
3. PEELING STRENGTH: 0.1 ~ 1.3 N (10 ~ 130 GRAMS).
4. PEELING SPEED: 300 mm/min.



THIS DRAWING IS A CONTROLLED DOCUMENT.				DWN	CHK
DIMENSIONS: MM				APVD	
TOLERANCES UNLESS OTHERWISE SPECIFIED:				PRODUCT SPEC	
0 PLC ±				APPLICATION SPEC	
1 PLC ±				WEIGHT	
2 PLC ±					
3 PLC ±					
4 PLC ±					
MATERIAL					
FINISH					
CUSTOMER DRAWING					

8.54 Kg	4.8 Kg	300	5	1500
GROSS WEIGHT	NET WEIGHT	PCS/TAPE	REELS/BOX	PCS/BOX

NAME			
PCI EXPRESS MINI CARD CONNECTOR, 9.9 MM HEIGHT			
SIZE	CAGE CODE	DRAWING NO	RESTRICTED TO
A2	00779	C-2041216	
SCALE		SHEET	REV
—		4 of 4	C1