



Chipsmall Limited consists of a professional team with an average of over 10 year of expertise in the distribution of electronic components. Based in Hongkong, we have already established firm and mutual-benefit business relationships with customers from,Europe,America and south Asia,supplying obsolete and hard-to-find components to meet their specific needs.

With the principle of “Quality Parts,Customers Priority,Honest Operation,and Considerate Service”,our business mainly focus on the distribution of electronic components. Line cards we deal with include Microchip,ALPS,ROHM,Xilinx,Pulse,ON,Everlight and Freescale. Main products comprise IC,Modules,Potentiometer,IC Socket,Relay,Connector.Our parts cover such applications as commercial,industrial, and automotives areas.

We are looking forward to setting up business relationship with you and hope to provide you with the best service and solution. Let us make a better world for our industry!



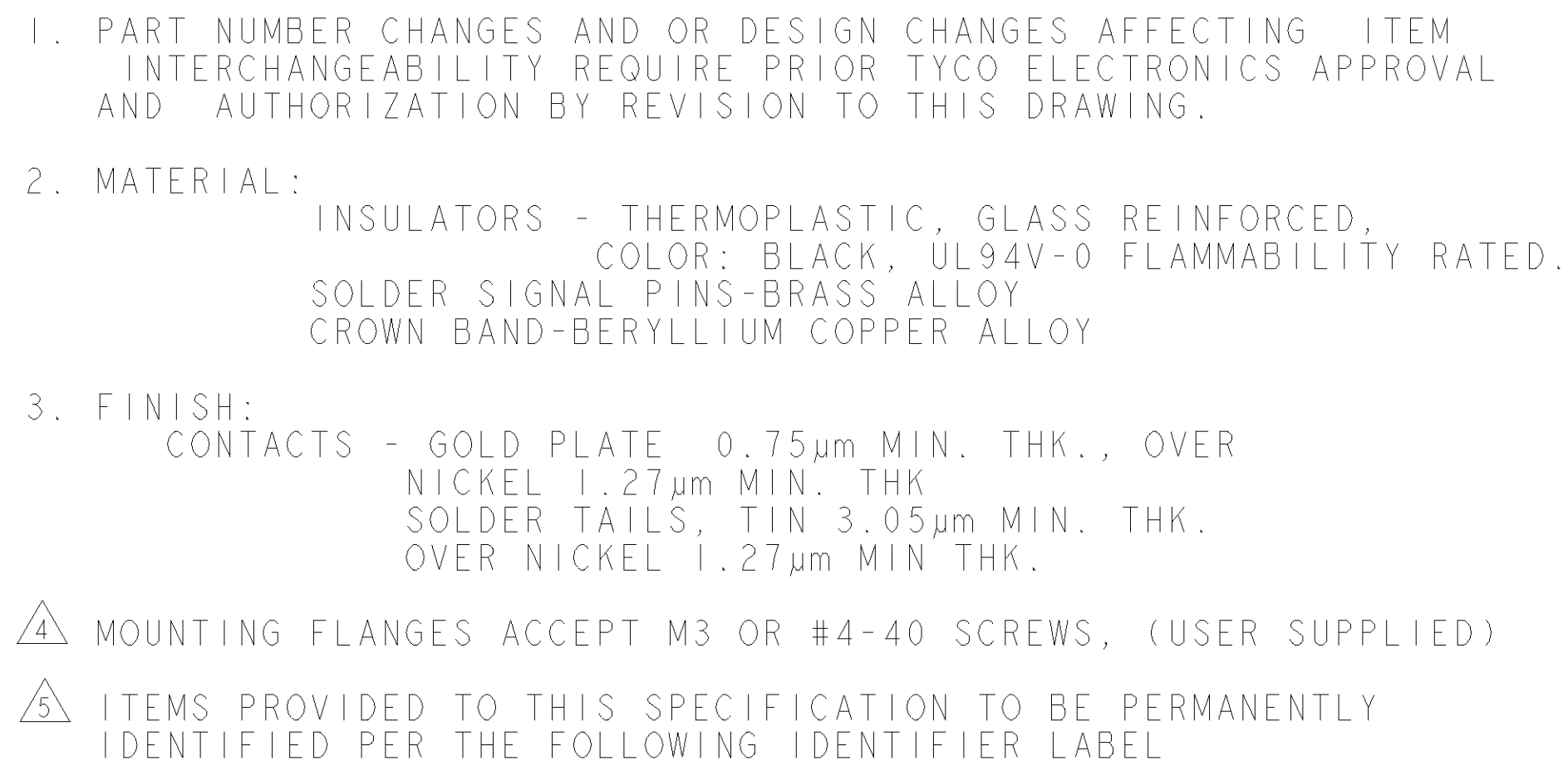
Contact us

Tel: +86-755-8981 8866 Fax: +86-755-8427 6832

Email & Skype: info@chipsmall.com Web: www.chipsmall.com

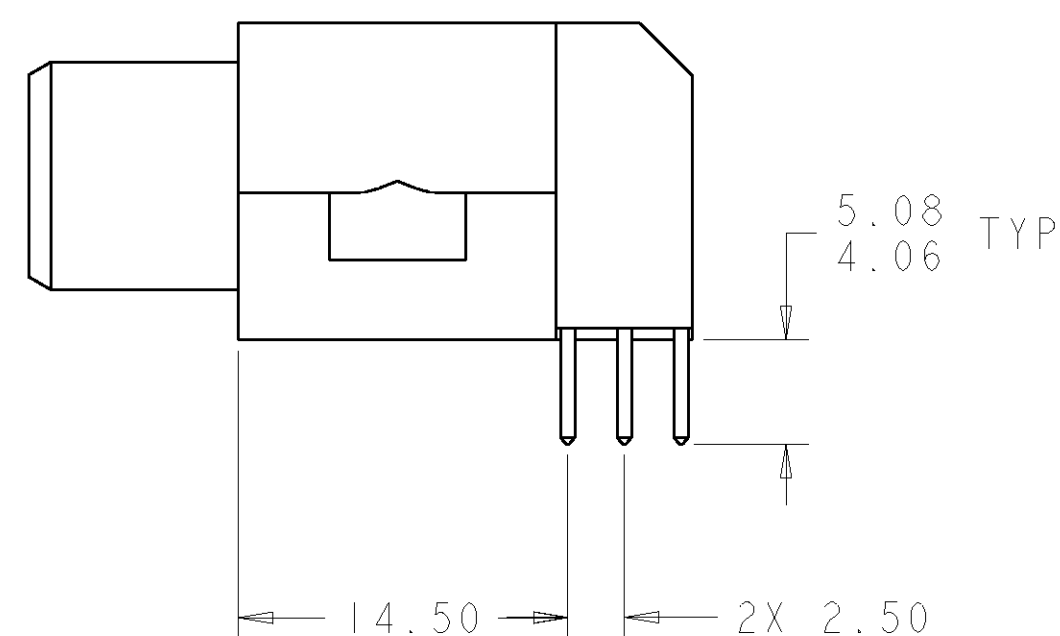
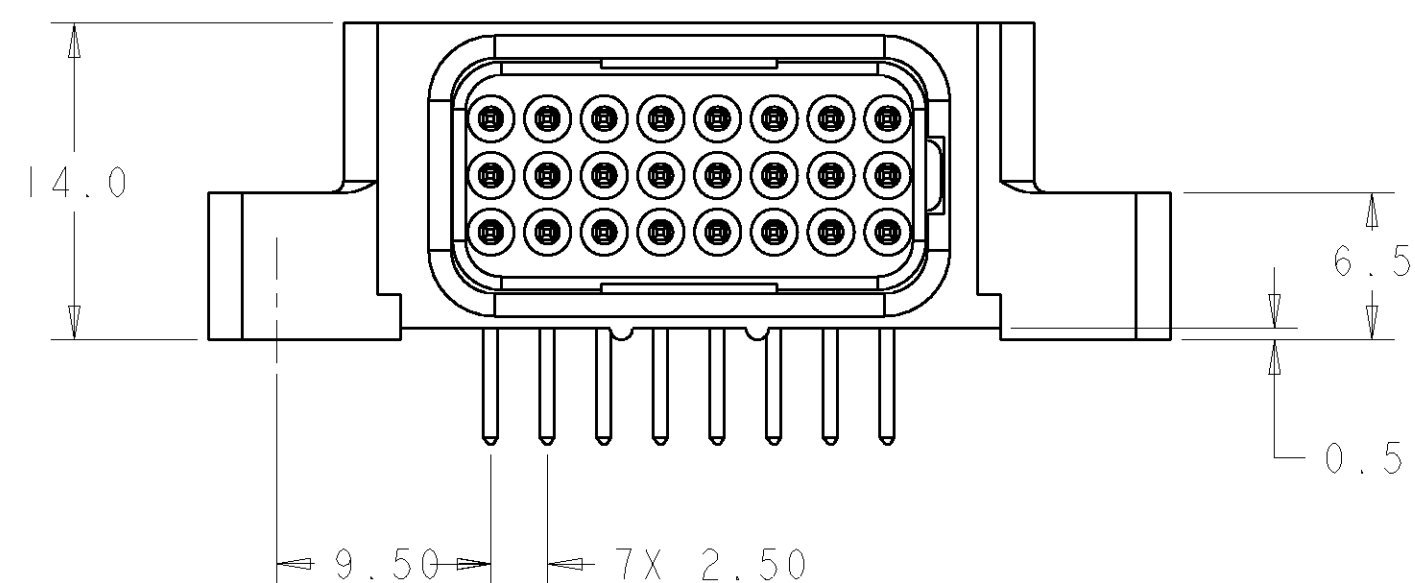
Address: A1208, Overseas Decoration Building, #122 Zhenhua RD., Futian, Shenzhen, China




YEAR WEEK

TYCO ELECTRONICS P/N

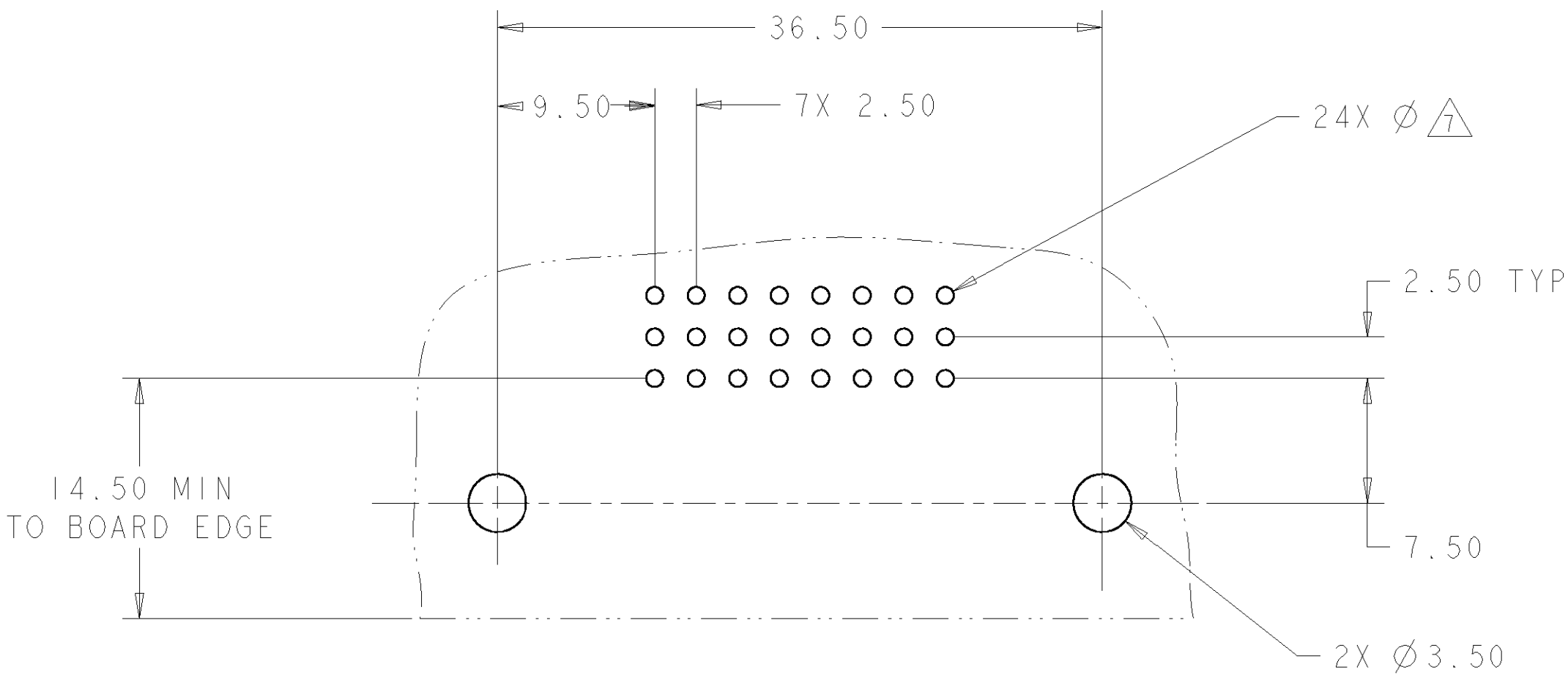
DATE CODE (e.g., 0106)

$$\overbrace{XXXXXX}^{\text{6}} - X$$


AS SHOWN	6646982-1
DESCRIPTION	PART NUMBER

THIS DRAWING IS A CONTROLLED DOCUMENT FOR TYCO ELECTRONICS CORPORATION IT IS SUBJECT TO CHANGE AND THE CONTROLLING ENGINEERING ORGANIZATION SHOULD BE CONTACTED FOR THE LATEST REVISION.		DWN 17SEPT07 R. GRZYBOWSKI		Tyco Electronics		Tyco Electronics	
		CHR 17SEPT07 P. DAMATO		Harrisburg, PA 17105-3608			
DIMENSIONS: mm [INCHES]		TOLERANCES UNLESS OTHERWISE SPECIFIED:		NAME			
		APVD 17SEPT07 S. FLICKINGER		SOCKET CONNECTOR, RIGHT ANGLE SOLDER TAILS FLATPAQ			
		PRODUCT SPEC					
		APPLICATION SPEC					
		-					
MATERIAL		FINISH		SIZE	CAGE CODE	DRAWING NO	RESTRICTED TO
-		-		A2	00779	C-6646982	-
CUSTOMER DRAWING				SCALE	3.1	SHEET	1 OF 3
				REV	A		

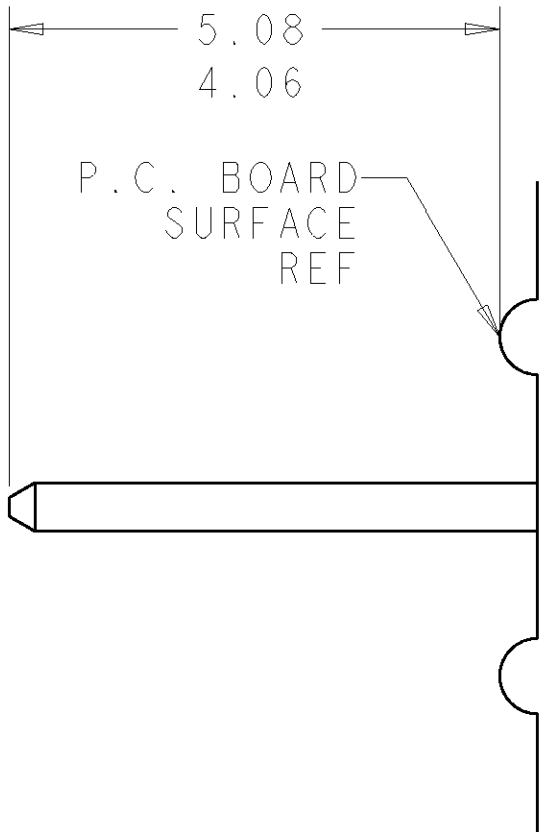
ELCON	FLATPAQ
-------	---------



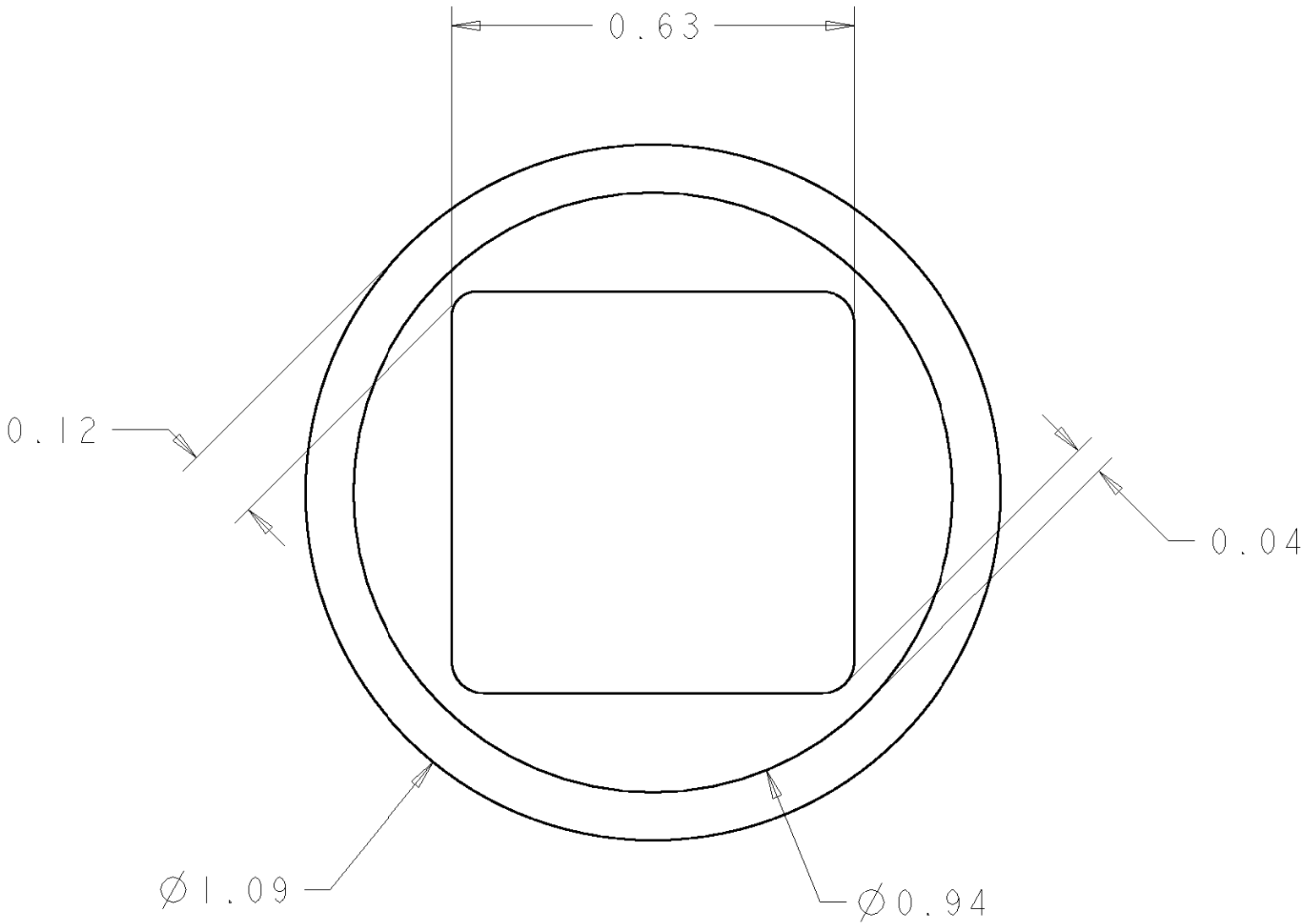
PRINTED CIRCUIT LAYOUT
COMPONENT SIDE


CONNECTOR	EQUIVALENT CATALOG MODULE #	MODULE QTY	CONTACT QTY	SIZE NO.	MATING PIN	MAX. CURRENT (PER CONTACT)	CONTACT SPACING	VOLTAGE RATING
SOCKET	FP303	1	24	22	.64 [.025] SQ.	3 amps	2.50 [.0984]	125 VOLTS
	FP500	1	-	LEFT MOUNTING FLANGE				
	FP501	1	-	RIGHT MOUNTING FLANGE				

LOC	DIST	REVISIONS			
GP	00	P	LTR	DESCRIPTION	DATE



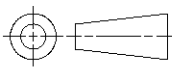
6. SOLDER PIN DETAIL
SCALE 10:1



 SOLDER TERMINATION AREA
SCALE 40:1
RECOMMENDED PRINTED CIRCUIT SOLDER HOLE
FINISHED HOLE: Ø1.02 [.040] ±.08 [.003]
DRILLED HOLE: Ø1.15 [.0453] ±.013 [.0005]
COPPER PLATE: .025 [.0010] MIN.
TIN PLATE: .008 [.0003] MIN. (PER SURFACE)

ELCON

FLATPAQ

THIS DRAWING IS A CONTROLLED DOCUMENT FOR TYCO ELECTRONICS CORPORATION IT IS SUBJECT TO CHANGE AND THE CONTROLLING ENGINEERING ORGANIZATION SHOULD BE CONTACTED FOR THE LATEST REVISION.		DWN R. GRZYBOWSKI 17SEPT07	Tyco Electronics Harrisburg, PA 17105-3608		
DIMENSIONS: mm[INCHES]		CHK P. DAMATO 17SEPT07	NAME SOCKET CONNECTOR, RIGHT ANGLE SOLDER TAILS FLATPAQ		
		APVD S. FLICKINGER 17SEPT07			
TOLERANCES UNLESS OTHERWISE SPECIFIED:		PRODUCT SPEC	SIZE	CAGE CODE	DRAWING NO.
0 PLC ±.5		-	A2	00779	C-6646982
1 PLC ±.5		APPLICATION SPEC	SCALE	3:1	SHEET 3 OF 3
2 PLC ±.25		-	REV	A	
3 PLC ±.5		WEIGHT	RESTRICTED TO		
4 PLC ±.5		-	-		
ANGLES ±.5		CUSTOMER DRAWING			
FINISH		-			
MATERIAL		-			
-		-			