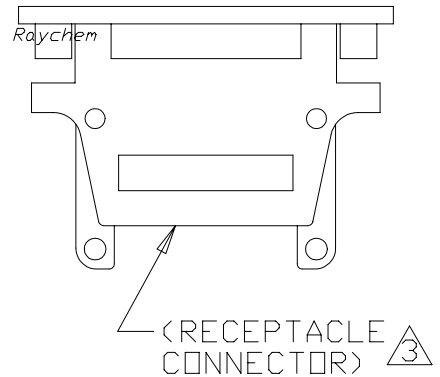
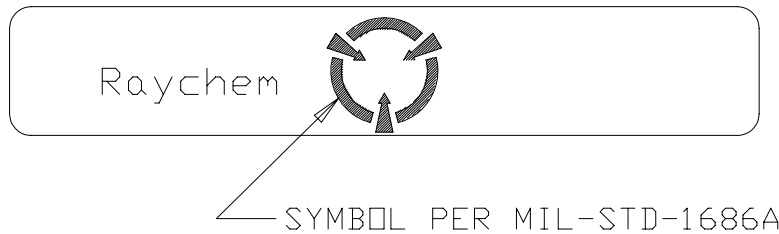
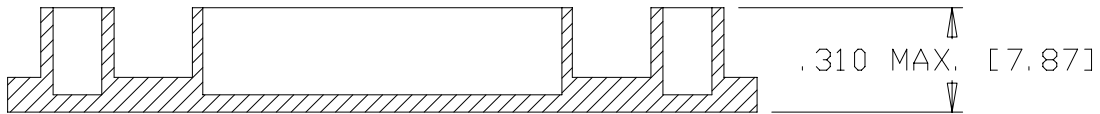
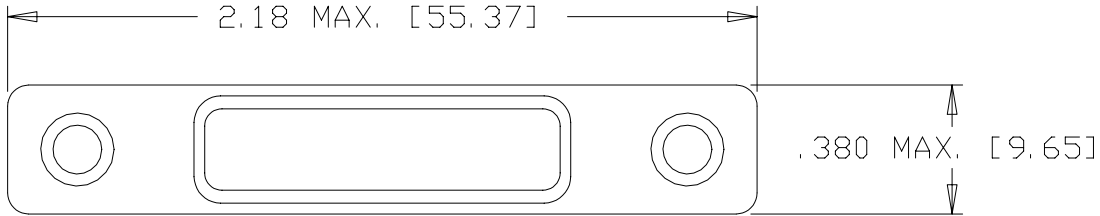


REVISIONS			
LTR	DESCRIPTION	DATE	APPROVED
N/C	INITIAL RELEASE PER ECN# T-		

NOTES:

- MATERIAL: LNP STATKON-FE (VIRGIN) HIGH DENSITY POLYETHYLENE.  
COLOR: BLACK
- RESISTIVITY OF MATERIAL ELECTRICALLY CONDUCTIVE PER MIL-STD-1686
- VIEW SHOWING TYPICAL INSTALLATION (ROTATED 180°).



If this document is printed it becomes uncontrolled.  
Check with the web for latest revision.

Raychem

SPECIFICATION CONTROL DRAWING © Raychem Corporation 1992

UNLESS OTHERWISE SPECIFIED DIMENSIONS ARE IN INCHES. METRIC DIMENSIONS ARE IN BRACKETS.	DRAWN	J. B. K.	92 AUG 31	RAYCHEM CORPORATION 300 CONSTITUTION DRIVE MENLO PARK, CALIFORNIA 94025			
	CHECKED			TITLE			
	APPROVED			CAP, DUST, RECEPTACLE, 1 INCH, CONDUCTIVE, MTC50 SERIES			
	APPROVED			PCN: 396699			
DECIMALS .XXX ± — [ — mm] .XX ± — [ — mm]	CAD NAME 009232-1			SIZE	CODE IDENT. NO.	DWG. NO.	REV
ANGLES .X ± —	THIRD ANGLE PROJECTION			A	06090	CHA-0271	N/C
WEIGHT .0028 lbs [1.270 g]				DO NOT SCALE THIS DRAWING			SHEET 1 OF 1