



Chipsmall Limited consists of a professional team with an average of over 10 year of expertise in the distribution of electronic components. Based in Hongkong, we have already established firm and mutual-benefit business relationships with customers from,Europe,America and south Asia,supplying obsolete and hard-to-find components to meet their specific needs.

With the principle of “Quality Parts,Customers Priority,Honest Operation,and Considerate Service”,our business mainly focus on the distribution of electronic components. Line cards we deal with include Microchip,ALPS,ROHM,Xilinx,Pulse,ON,Everlight and Freescale. Main products comprise IC,Modules,Potentiometer,IC Socket,Relay,Connector.Our parts cover such applications as commercial,industrial, and automotives areas.

We are looking forward to setting up business relationship with you and hope to provide you with the best service and solution. Let us make a better world for our industry!



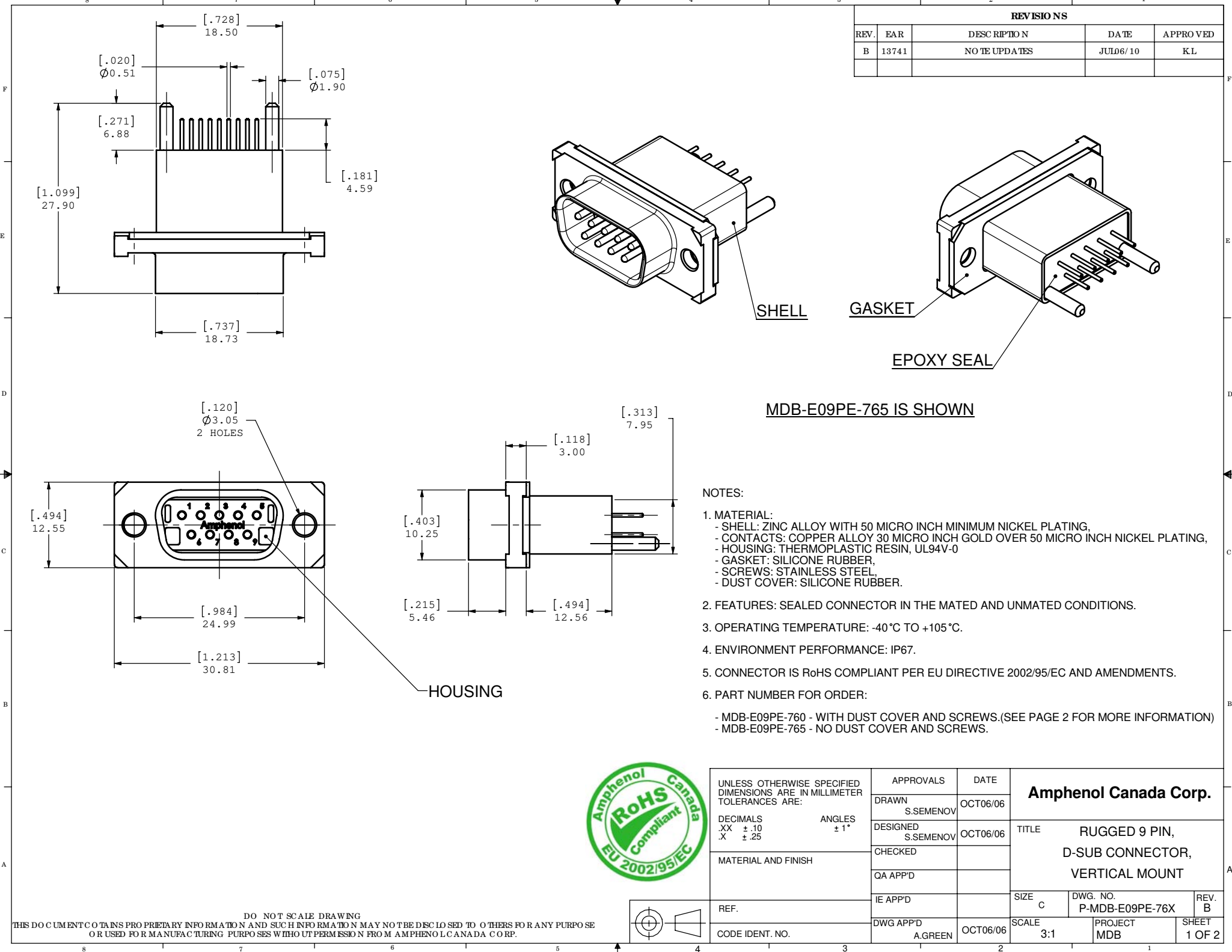
## Contact us

Tel: +86-755-8981 8866 Fax: +86-755-8427 6832

Email & Skype: [info@chipsmall.com](mailto:info@chipsmall.com) Web: [www.chipsmall.com](http://www.chipsmall.com)

Address: A1208, Overseas Decoration Building, #122 Zhenhua RD., Futian, Shenzhen, China





REVISIONS				
REV.	EAR	DESCRIPTION	DATE	APPROVED
B	13741	NOTE UPDATES	JUL06/10	KL

MDB-E09PE-765 IS SHOWN

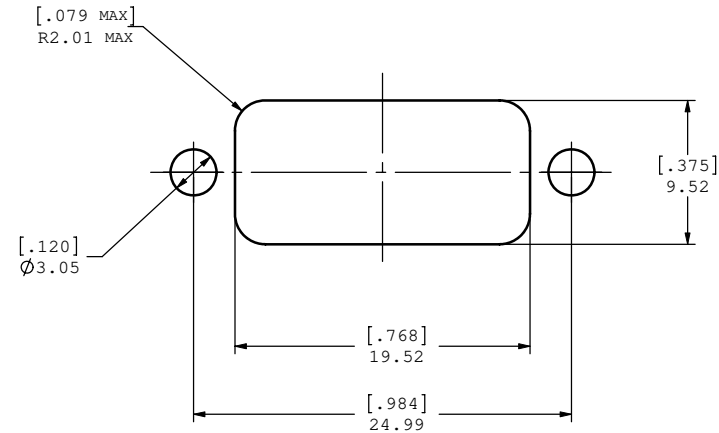
- NOTES:
- MATERIAL:
    - SHELL: ZINC ALLOY WITH 50 MICRO INCH MINIMUM NICKEL PLATING,
    - CONTACTS: COPPER ALLOY 30 MICRO INCH GOLD OVER 50 MICRO INCH NICKEL PLATING,
    - HOUSING: THERMOPLASTIC RESIN, UL94V-0
    - GASKET: SILICONE RUBBER,
    - SCREWS: STAINLESS STEEL,
    - DUST COVER: SILICONE RUBBER.
  - FEATURES: SEALED CONNECTOR IN THE MATED AND UNMATED CONDITIONS.
  - OPERATING TEMPERATURE: -40°C TO +105°C.
  - ENVIRONMENT PERFORMANCE: IP67.
  - CONNECTOR IS RoHS COMPLIANT PER EU DIRECTIVE 2002/95/EC AND AMENDMENTS.
  - PART NUMBER FOR ORDER:
    - MDB-E09PE-760 - WITH DUST COVER AND SCREWS.(SEE PAGE 2 FOR MORE INFORMATION)
    - MDB-E09PE-765 - NO DUST COVER AND SCREWS.



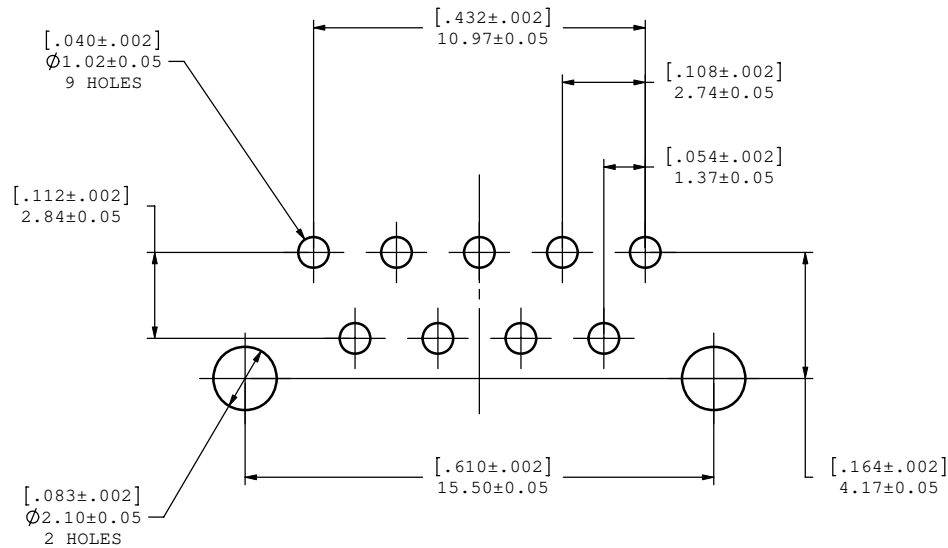
UNLESS OTHERWISE SPECIFIED DIMENSIONS ARE IN MILLIMETER TOLERANCES ARE:		APPROVALS		DATE		Amphenol Canada Corp.									
		DRAWN S.SEMENOV		OCT06/06											
DECIMALS .XX ±.10 .X ±.25		ANGLES ± 1°		DESIGNED S.SEMENOV		OCT06/06		TITLE RUGGED 9 PIN, D-SUB CONNECTOR, VERTICAL MOUNT							
				CHECKED											
MATERIAL AND FINISH		QA APP'D				SIZE C					DWG. NO. P-MDB-E09PE-76X		REV. B		
		IE APP'D													
REF.		DWG APP'D A.GREEN		OCT06/06		SCALE 3:1		PROJECT MDB		SHEET 1 OF 2					

DO NOT SCALE DRAWING  
THIS DOCUMENT CONTAINS PROPRIETARY INFORMATION AND SUCH INFORMATION MAY NOT BE DISCLOSED TO OTHERS FOR ANY PURPOSE OR USED FOR MANUFACTURING PURPOSES WITHOUT PERMISSION FROM AMPHENOL CANADA CORP.

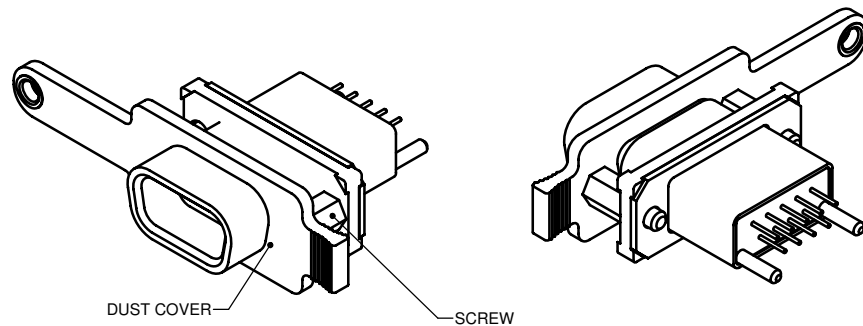
REVISIONS				
REV.	EAR	DESCRIPTION	DATE	APPROVED
B	13741	NOTE UPDATES	JUL06/10	KL



RECOMMENDED PANEL CUTOUT  
DIMENSIONS FOR REFERENCE ONLY



RECOMMENDED P.C.B. LAYOUT



MDB-E09PE-760 IS SHOWN

FOR MORE INFORMATION ABOUT DUST COVER,  
SEE DRAWING P-MDB-227-093-205BP



UNLESS OTHERWISE SPECIFIED DIMENSIONS ARE IN MILLIMETER TOLERANCES ARE:		APPROVALS	DATE	Amphenol Canada Corp.		
		DRAWN S.SEMENOV	OCT06/06			
DECIMALS .XX ±.10 .X ±.25	ANGLES ± 1°	DESIGNED S.SEMENOV	OCT06/06	TITLE RUGGED 9 PIN, D-SUB CONNECTOR, VERTICAL MOUNT		
MATERIAL AND FINISH		CHECKED				
		QA APP'D		SIZE C	DWG. NO. P-MDB-E09PE-76X	REV. B
REF.		IE APP'D		SCALE 3:1	PROJECT MDB	SHEET 2 OF 2
CODE IDENT. NO.		DWG APP'D A.GREEN	OCT06/06			

