



Chipsmall Limited consists of a professional team with an average of over 10 year of expertise in the distribution of electronic components. Based in Hongkong, we have already established firm and mutual-benefit business relationships with customers from,Europe,America and south Asia,supplying obsolete and hard-to-find components to meet their specific needs.

With the principle of “Quality Parts,Customers Priority,Honest Operation,and Considerate Service”,our business mainly focus on the distribution of electronic components. Line cards we deal with include Microchip,ALPS,ROHM,Xilinx,Pulse,ON,Everlight and Freescale. Main products comprise IC,Modules,Potentiometer,IC Socket,Relay,Connector.Our parts cover such applications as commercial,industrial, and automotives areas.

We are looking forward to setting up business relationship with you and hope to provide you with the best service and solution. Let us make a better world for our industry!



## Contact us

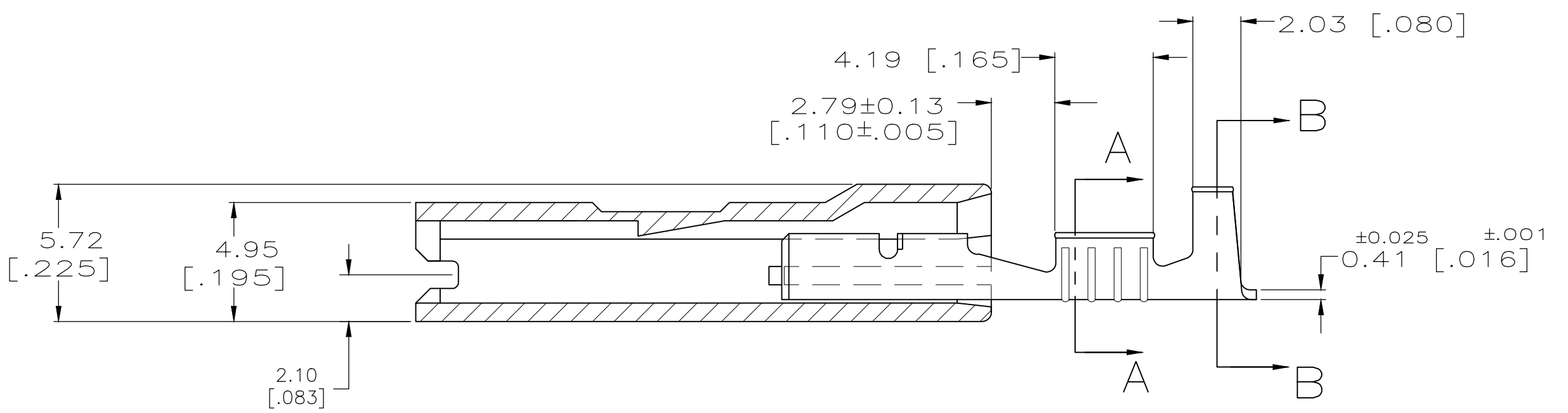
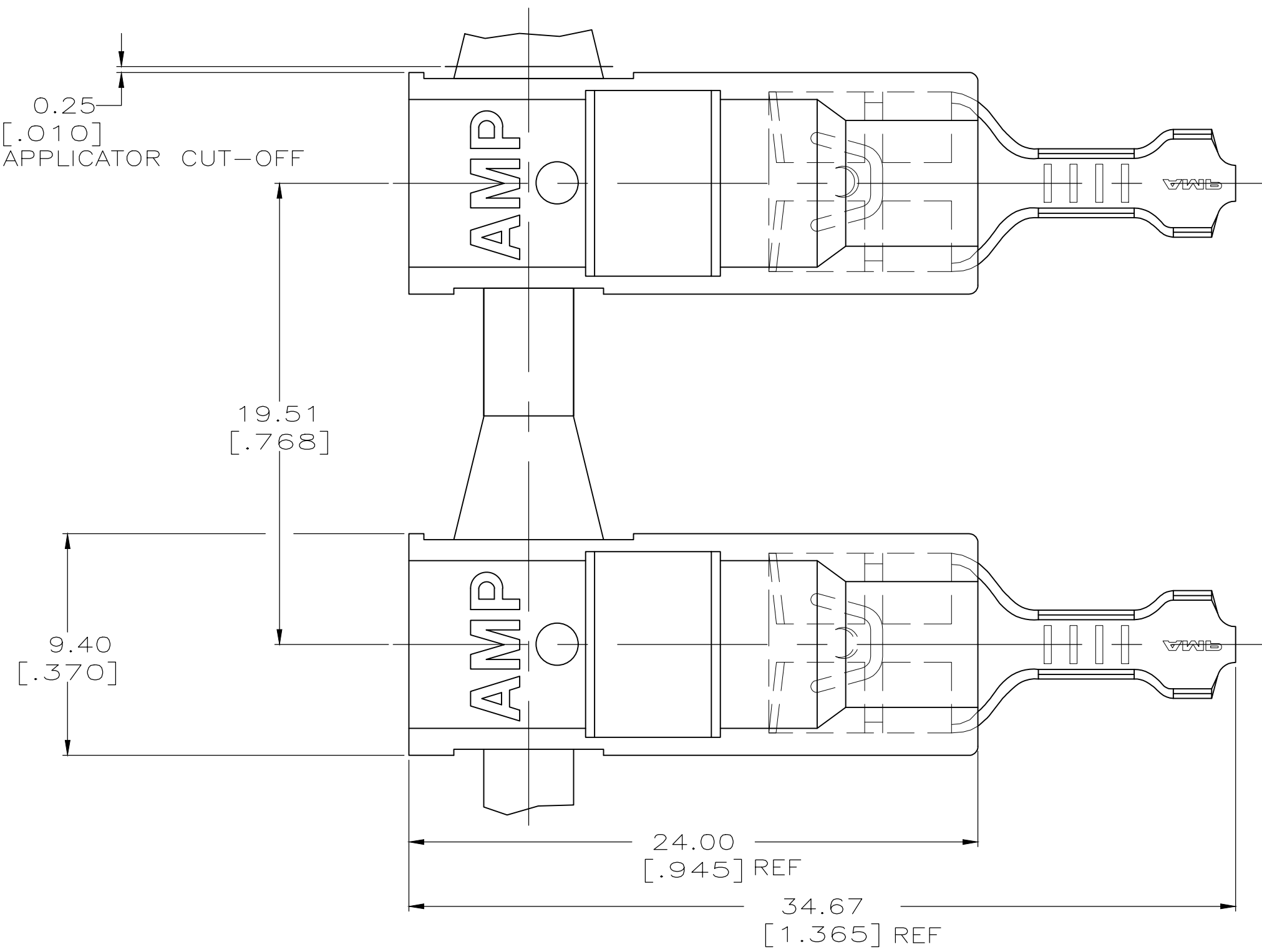
Tel: +86-755-8981 8866 Fax: +86-755-8427 6832

Email & Skype: [info@chipsmall.com](mailto:info@chipsmall.com) Web: [www.chipsmall.com](http://www.chipsmall.com)

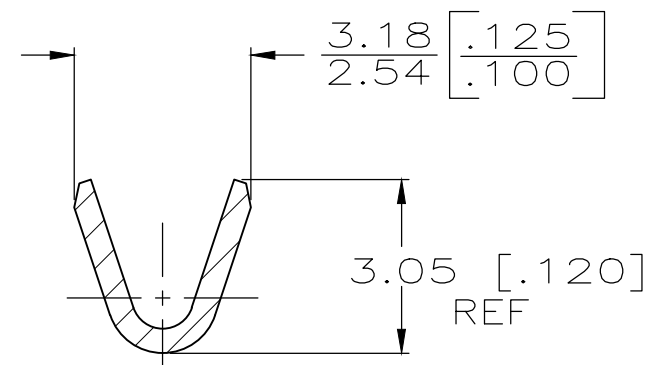
Address: A1208, Overseas Decoration Building, #122 Zhenhua RD., Futian, Shenzhen, China



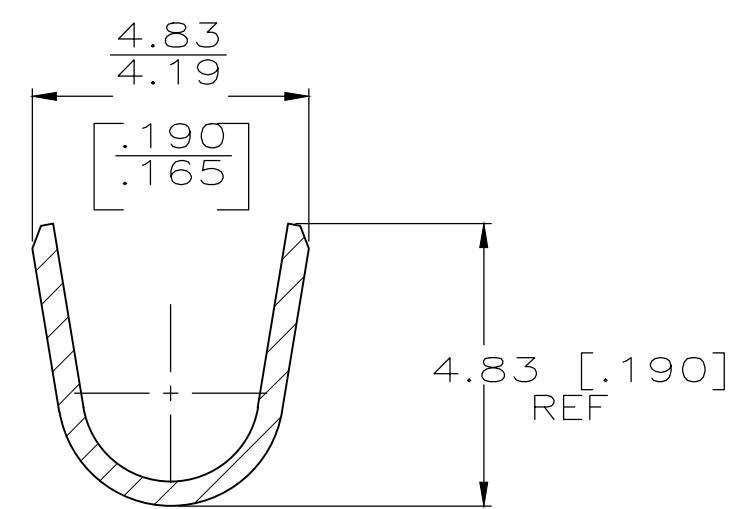
REVISIONS					
P	LTR	DESCRIPTION	DATE	DWN	APVD
	C	REVISED PER ECO-18-007270	30MAY2018	RS	DS



- 1 LOW-INSERTION FASTON TERMINALS, BASE PART NUMBER 2238027, ARE USED IN THIS PRODUCT.
- 2 OFFERED FOR CONSIDERATION IN APPLICATIONS REQUIRING "NON-DRIP" HOUSING MATERIAL.
- 3 PRE-PRODUCTION FASR REQUIRED.
- 4 WIRE SIZE: 0.3-0.8 MM<sup>2</sup> [22-18]
- 5 INSULATION RANGE: 2.29-3.30 [.090-.130]
- 6 MATING TAB THICK: 0.81±0.025[.032#.001]
- 7 GLOW WIRE APPROVED: CONTACT TE ENGINEERING FOR SPECIFICATION ( ALL WALL THICKNESS ARE BETWEEN 0.4 - 3.0 [.015-.118 ].
- 8 OBSOLETE PARTS
- 9 AGENCY APPROVAL IS PENDING.



SECTION A-A  
SCALE 8:1



SECTION B-B  
SCALE 8:1

SUPERCEDED BY 1969161-5	9	TIN PLATE	66 NYLON V0 NATURAL	1969161-5
		TIN PLATE	NATURAL, V2, WHITE	7 3 1969161-3
		TIN PLATE	NYLON 66, V0	3 1969161-2
		PLAIN	NATURAL ( WHITE)	8 3 1969161-4
		TERMINAL FINISH	HOUSING	PART NO

THIS DRAWING IS A CONTROLLED DOCUMENT.

DIMENSIONS:  
mm [INCHES]

MATERIAL

BRASS

TOLERANCES UNLESS OTHERWISE SPECIFIED:

0 PLC	± -
1 PLC	± -
2 PLC	± 0.25 [.010]
3 PLC	± -
4 PLC	± -
ANGLES	± -

FINISH

SEE TABLE

DWN RAGHAVENDRA 13OCT09

CHK G PORTA 13OCT09

APVD G PORTA 13OCT09

PRODUCT SPEC 108-1285

APPLICATION SPEC 114-2124

WEIGHT 0.000000

CUSTOMER DRAWING

TE Connectivity Ltd.

ASSEMBLY, HOUSING & RECEPTACLE, 6.35 [.250] SERIES ULTRA-POD

SIZE A2

CAGE CODE 00779

DRAWING NO C=1969161

RESTRICTED TO -

SCALE 5:1

SHEET 1 OF 1

REV C