



Chipsmall Limited consists of a professional team with an average of over 10 year of expertise in the distribution of electronic components. Based in Hongkong, we have already established firm and mutual-benefit business relationships with customers from,Europe,America and south Asia,supplying obsolete and hard-to-find components to meet their specific needs.

With the principle of “Quality Parts,Customers Priority,Honest Operation,and Considerate Service”,our business mainly focus on the distribution of electronic components. Line cards we deal with include Microchip,ALPS,ROHM,Xilinx,Pulse,ON,Everlight and Freescale. Main products comprise IC,Modules,Potentiometer,IC Socket,Relay,Connector.Our parts cover such applications as commercial,industrial, and automotives areas.

We are looking forward to setting up business relationship with you and hope to provide you with the best service and solution. Let us make a better world for our industry!



## Contact us

Tel: +86-755-8981 8866 Fax: +86-755-8427 6832

Email & Skype: [info@chipsmall.com](mailto:info@chipsmall.com) Web: [www.chipsmall.com](http://www.chipsmall.com)

Address: A1208, Overseas Decoration Building, #122 Zhenhua RD., Futian, Shenzhen, China



20 19 18 17 16 15 14 13 12 11 10 9 8 7 6 5 4 3 2 1

NOTES: VALID UNLESS OTHERWISE SPECIFIED

1. GENERAL:

- a. APPLICATION SPECIFICATION: AS-31386-200  
b. PRODUCT SPECIFICATION: PS-31387-200  
c. PACKAGING SPECIFICATION: PK-31301-916  
d. PARTS MUST BE IN COMPLIANCE TO MOLEX CHEMICAL SUBSTANCES FOR PRODUCTS AND PACKAGING SPECIFICATION: ES-40000-5016  
e. DATA MUST BE SUBMITTED UNDER THE MOLEX PART NUMBER TO IMDS (COMPANY ID#13255)  
f. DIMENSIONS AND TOLERANCES ARE VALID FOR AS SHIPPED SHROUD ASSEMBLY  
g. REFERENCE GM INTERFACE CONTROL DRAWINGS (ICD)  
1. 12582682 (Au)  
2. 12642695 (Ag)

2. DESIGN - MATERIALS:

- a. PLASTIC PBT 30% GF - SEE CHART FOR COLOR  
b. SIGNAL PIN PLATING:  
- UNDERPLATE: NICKEL 1.27-2.54  $\mu$ m  
- SELECT GOLD OPTION: 0.76  $\mu$ m MIN.  
- SELECT SILVER OPTION: 1.90-3.30  $\mu$ m MIN  
- SOLDER TAIL SELECT TIN: 5.08-10.16  $\mu$ m BRIGHT FINISH  
c. GROUND PIN PLATING:  
- UNDERPLATE: NICKEL 1.27-2.54  $\mu$ m  
- OVERPLATE: SELECT TIN 2.54-4.06  $\mu$ m, MATTE FINISH

3. DESIGN - GEOMETRY:

- a. THIS IS A 100% CAD GENERATED PART. THE CAD MATHEMATICAL DATA IS THE MASTER FOR ALL NON-DIMENSIONAL FEATURES. DRAWING DIMENSIONS SHALL BE MET WHEN DIFFERENCES EXIST BETWEEN THE DRAWING AND THE CAD MODEL. UNDERLINED DIMENSIONS OR DIMENSIONS INDICATED AS 'EDITED' MAY BE DIFFERENT FROM THE 3D MODEL GEOMETRY. FOR DIMENSIONAL OR ANY INFORMATION NOT SHOWN ON THIS DRAWING, ANALYZE THE CAD MODEL.  
b. PRODUCT DESIGN MODEL NUMBER(S): SEE BOM TABLE  
c. GEOMETRIC DIMENSIONS AND TOLERANCES PER ASME Y14.5M-1994  
d. GENERAL TOLERANCES - SEE TABLE

4. DESIGN - MANUFACTURING:

- a. HUMAN READABLE LASER MARKING  
1. INFORMATION TO BE PRINTED:  
DDD - 4 DIGIT JULIAN DATE CODE  
S\_HH - STITCHER NUMBER\_HOUR NUMBER (24 HOUR CLOCK)  
MMM - LAST FOUR DIGITS OF MOLEX MATERIAL NUMBER  
2. SIZE: HUMAN LEGIBLE  
b. PIN MATE SIDE AND PCB SIDE TRUE POSITION TO BE VERIFIED ONLINE WITH A GO/NO-GO FUNCTIONAL GAGE.  
c. ANTI-TARNISH FOR Ag PLATING ONLY: SYNTHETIC HYDROCARBON CONTACT SURFACE FINISH OR EQUIVALENT APPLIED WITHOUT VOID TO CONTACT AREA (MIN. 3.7mm FROM PIN TIP).  
d. VISUAL DEFECTS SHALL MEET COSMETIC STANDARD PS-45499-002 (CLASS B)  
e. THERE SHALL BE NO PERMISSIBLE DEFECTS THAT COULD POTENTIALLY PROHIBIT THE FUNCTIONALITY WITHIN THE SEALING SURFACE/ZONE SUCH AS PARTING LINES, MISMATCHES, SINK, TEXTURE VARIATIONS, SCRATCHES/GOUGES, SHORT FILL, PROTRUSIONS, PITS, DENTS/NICKS, BLISTERS OR EJECTOR MARKS.

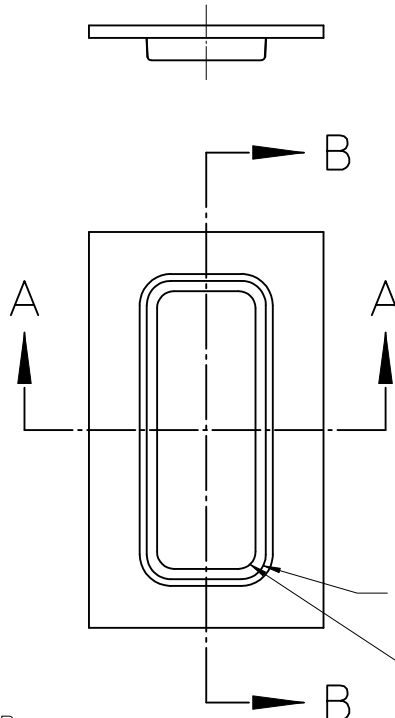
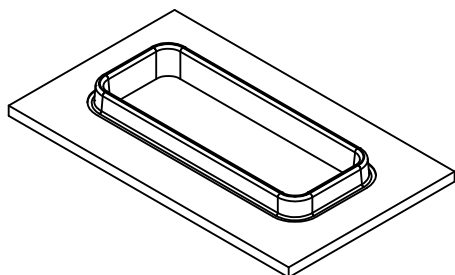
B13	CORRECTED REVISION COLUMN
B12	CORRECTED PCB KEY DIM A & DIM B FOR B & C KEYS
B11	UPDATED PCB KEY DIM A & DIM B FOR ALL KEYS UPDATE STATUS TO SALEABLE
B10	UPDATED NOTE 1c (Au & Ag PACKAGING ARE THE SAME) SAP# 10607192
B9	UPDATED NOTE 1c SAP# 10595870
B8	ADDED NOTE 4d, e & SEALING ZONE DIMS ON PG 2 SAP# 10586362
B7	MODIFIED HIGH RETENTION CAVITY FOR 2.8 GROUND PIN SAP# 10584227
B6	ADDED BALLOONS 1.2,6-15,19,20, 24-47, DELETED BALLOONS 3-5,17, 18,21-23 EDITED ALL NOTES, STATUS & MATING HARNESS PART NUMBER SAP# 10580347
REV.	DESCRIPTION

INSPECTION BALLOON LOG									
PER DRAWING REVISION: B8 LAST INSPECTION BALLOON: 47 ADDED BALLOON NUMBERS: 1 2 6 7 8 9 10 11 12 13 14 15 19 20 24 25 26 27 28 29 30 31 32 33 34 35 36 37 38 39 40 41 42 43 44 45 46 47 REMOVED BALLOON NUMBERS: 3 4 5 16 17 18 21 22 23									
SEE REV COLUMN SEC NO: UAU2015-0314 DRAWNDOWN CHKD: APPR:DKR/MZTK REV B13	QUALITY SYMBOLS ▽=0 ▽=0 ▽=0	GENERAL TOLERANCES (UNLESS SPECIFIED)		DIMENSION STYLE MM ONLY		SCALE 2:1	DESIGN UNITS METRIC	THIRD ANGLE PROJECTION	
		mm INCH		DRAWN BY DATE FJAKLIC 04/30/08		TITLE 73 CKT SHROUD ASSEMBLY 0.64 SQ. PINS MX123			
		4 PLACES ± --- ± ---		CHECKED BY DATE FJAKLIC 04/30/08		molex			
		3 PLACES ± --- ± ---		APPROVED BY DATE GPRATT 05/05/08					
		2 PLACES ± 0.13 ± ---		MATERIAL NO. DOCUMENT NO. SD-31387-073					
1 PLACE ± 0.25 ± ---		DRAFT WHERE APPLICABLE MUST REMAIN WITHIN DIMENSIONS		SIZE D		SHEET NO. 1 OF 3			
THIS DRAWING CONTAINS INFORMATION THAT IS PROPRIETARY TO MOLEX INCORPORATED AND SHOULD NOT BE USED WITHOUT WRITTEN PERMISSION									

19 18 17 16 15 14 13 12 11 10 9 8 7 6 5 4 3 2 1

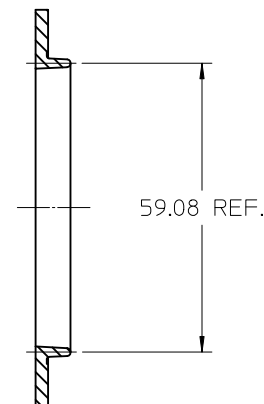




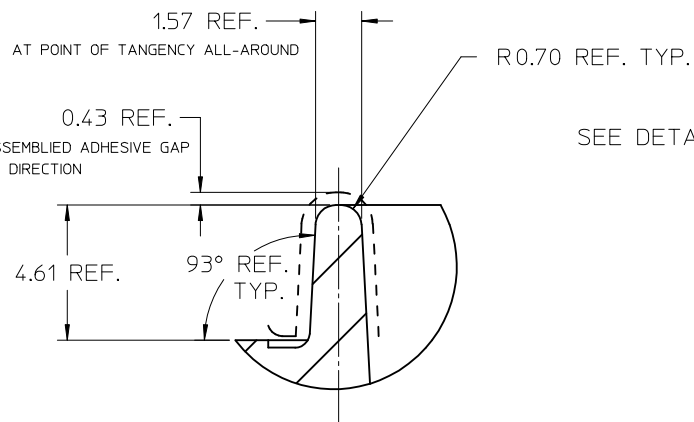


R. 5.00 REF. TYP.

R. 3.50 REF. TYP.

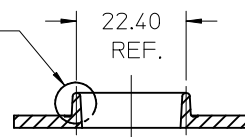


SECTION B-B



DETAIL 6:1

SEE DETAIL



SECTION A-A

ENTER DESCRIPTION EC NO: UAU2012-1624 DRAWN: JOUNN 2013/01/30 CHKD: JOUNAJ 2013/02/07 APPR: DKRAWCZYK 2013/02/19 B	QUALITY SYMBOLS  ▽=0 ▽=0	DESCRIPTION	GENERAL TOLERANCES (UNLESS SPECIFIED)		DIMENSION STYLE MM ONLY		SCALE 1:1	DESIGN UNITS METRIC	THIRD ANGLE PROJECTION							
				mm	INCH	DRAWN BY F JAKLIC	DATE 11/21/2008	TITLE LARGE FOOTPRINT ADHESIVE TONGUE GEOMETRY								
			4 PLACES	± ---	± ---	CHECKED BY G PRATT	DATE 11/21/2008									
			3 PLACES	± ---	± ---	APPROVED BY DKRAWCZYK	DATE 2013/02/19	MOLEX MOLEX INCORPORATED								
			2 PLACES	± ---	± ---	MATERIAL NO.							DOCUMENT NO.		SHEET NO. 1 OF 1	
			1 PLACE	± ---	± ---											
			ANGULAR ± ---°			DRAFT WHERE APPLICABLE MUST REMAIN WITHIN DIMENSIONS							SD-31387-173			
			SIZE B	THIS DRAWING CONTAINS INFORMATION THAT IS PROPRIETARY TO MOLEX INCORPORATED AND SHOULD NOT BE USED WITHOUT WRITTEN PERMISSION												