



Chipsmall Limited consists of a professional team with an average of over 10 year of expertise in the distribution of electronic components. Based in Hongkong, we have already established firm and mutual-benefit business relationships with customers from,Europe,America and south Asia,supplying obsolete and hard-to-find components to meet their specific needs.

With the principle of “Quality Parts,Customers Priority,Honest Operation,and Considerate Service”,our business mainly focus on the distribution of electronic components. Line cards we deal with include Microchip,ALPS,ROHM,Xilinx,Pulse,ON,Everlight and Freescale. Main products comprise IC,Modules,Potentiometer,IC Socket,Relay,Connector.Our parts cover such applications as commercial,industrial, and automotives areas.

We are looking forward to setting up business relationship with you and hope to provide you with the best service and solution. Let us make a better world for our industry!



## Contact us

Tel: +86-755-8981 8866 Fax: +86-755-8427 6832

Email & Skype: [info@chipsmall.com](mailto:info@chipsmall.com) Web: [www.chipsmall.com](http://www.chipsmall.com)

Address: A1208, Overseas Decoration Building, #122 Zhenhua RD., Futian, Shenzhen, China



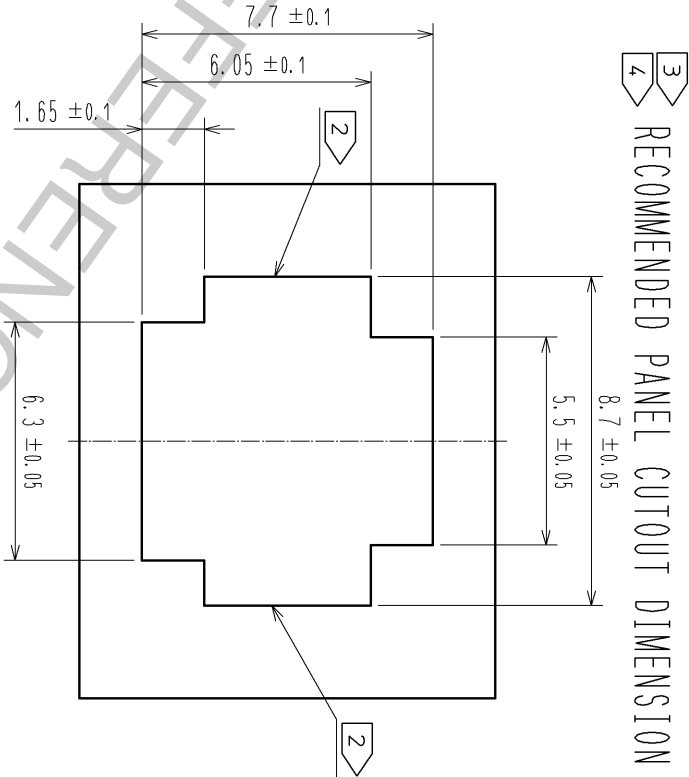
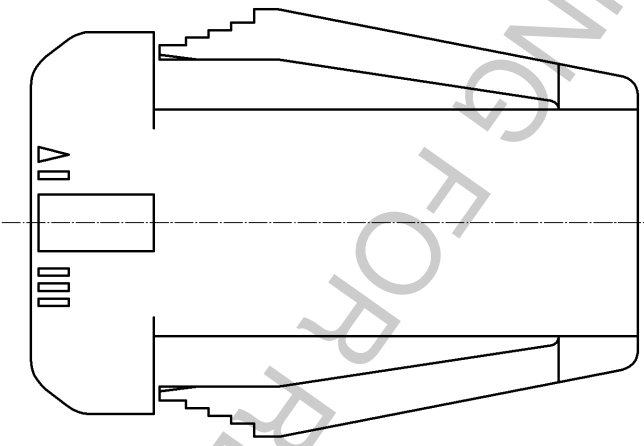
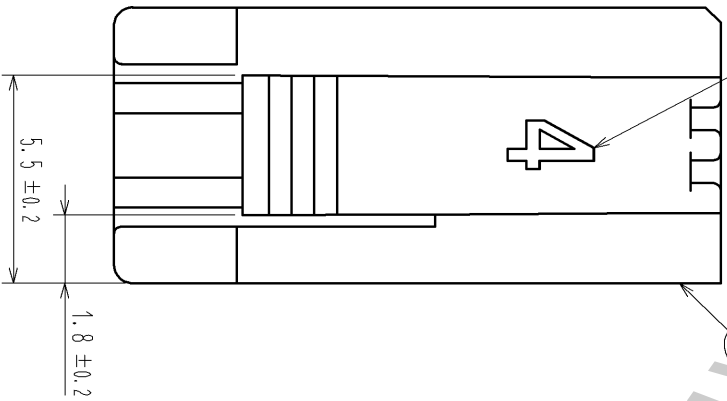
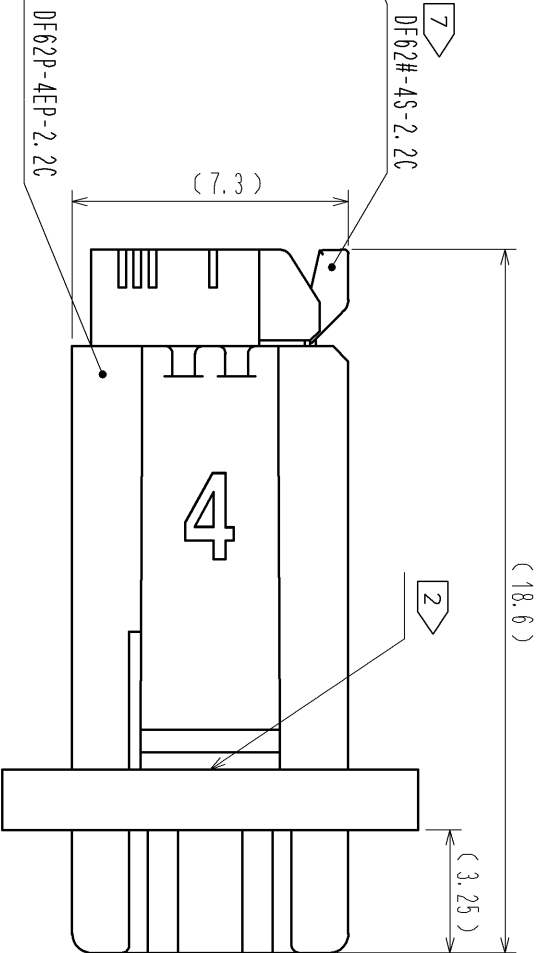
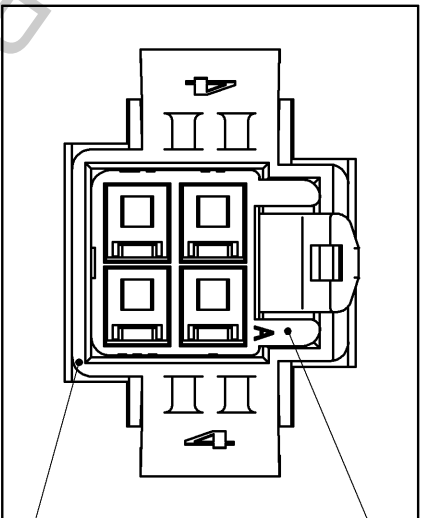
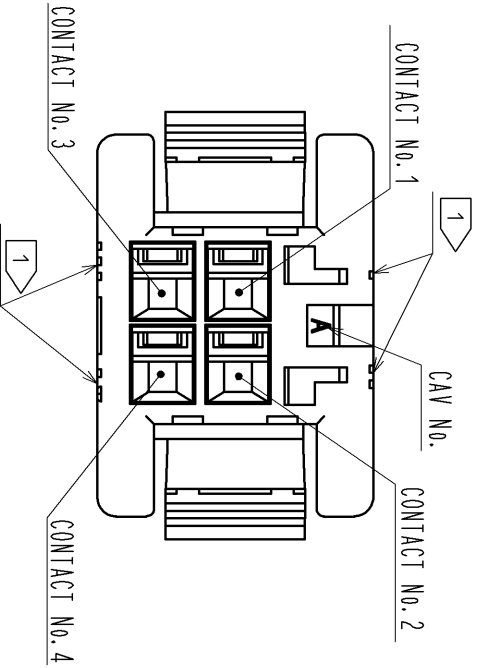
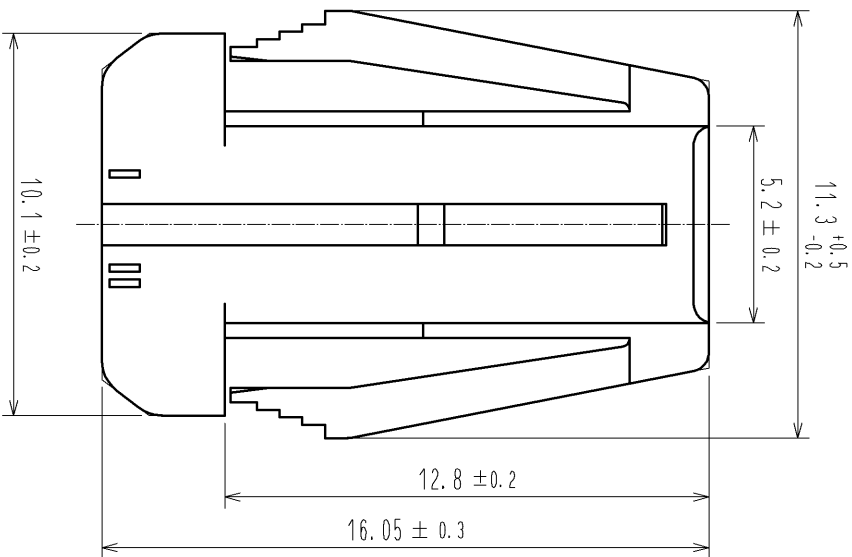
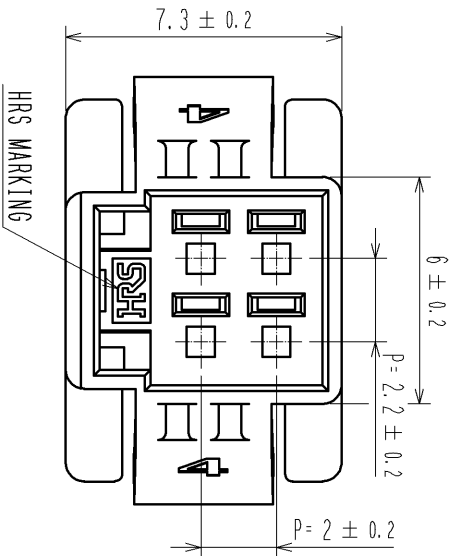
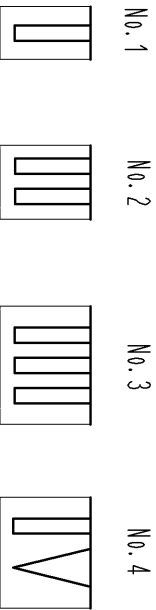


FIGURE-1 CONTACT NO. MARKING (10:1)



MATING FIGURE ( PANEL MOUNTED )

NOTE. 1 MARKINGS AT THE INDICATED POSITIONS ARE CONTACT NO. MARKING, AND SHAPES ARE SHOWN IN FIGURE-1.

2 PLEASE USE THE NON-RADIUS SIDE FOR THE PANEL HOOKING AREA.


3 APPLICABLE PANEL THICKNESSING IS 2.3 TO 0.5mm.

4 CONSULT HIROSE FOR THE OTHER PANEL CUTOUT DESIGNS THAN THE RECOMMENDED ONE.

5. PER PACK : 100 PIECES.

6. THE DIMENSIONS IN PARENTHESIS ARE FOR REFERENCE.

7 THIS FIGURE SHOWS THE MATED CONDITION WITH DF62B-4S-2.2C.

NO.		MATERIAL		FINISH , REMARKS		1		PBT		UL94V-0(BLACK)					
UNITS		SCALE		COUNT		DESCRIPTION OF REVISIONS		DESIGNED		CHECKED		DATE			
mm		5 : 1													
															
APPROVED : KI. AKIYAMA				13.12.26				DRAWING NO.				EDC3-349137-00			
CHECKED : OM. MIYAMOTO				13.12.26				PART NO.				DF62P-4EP-2.2C			
DESIGNED : TH. YOSHIZAWA				13.12.26				CODE				CL544-0545-7-00			
DRAWN : MI. SAKIMURA				13.12.25				NO.							
H I R O S E E L E C T R I C C O . , L T D .		