



Chipsmall Limited consists of a professional team with an average of over 10 year of expertise in the distribution of electronic components. Based in Hongkong, we have already established firm and mutual-benefit business relationships with customers from,Europe,America and south Asia,supplying obsolete and hard-to-find components to meet their specific needs.

With the principle of “Quality Parts,Customers Priority,Honest Operation,and Considerate Service”,our business mainly focus on the distribution of electronic components. Line cards we deal with include Microchip,ALPS,ROHM,Xilinx,Pulse,ON,Everlight and Freescale. Main products comprise IC,Modules,Potentiometer,IC Socket,Relay,Connector.Our parts cover such applications as commercial,industrial, and automotives areas.

We are looking forward to setting up business relationship with you and hope to provide you with the best service and solution. Let us make a better world for our industry!



## Contact us

Tel: +86-755-8981 8866 Fax: +86-755-8427 6832

Email & Skype: [info@chipsmall.com](mailto:info@chipsmall.com) Web: [www.chipsmall.com](http://www.chipsmall.com)

Address: A1208, Overseas Decoration Building, #122 Zhenhua RD., Futian, Shenzhen, China



2

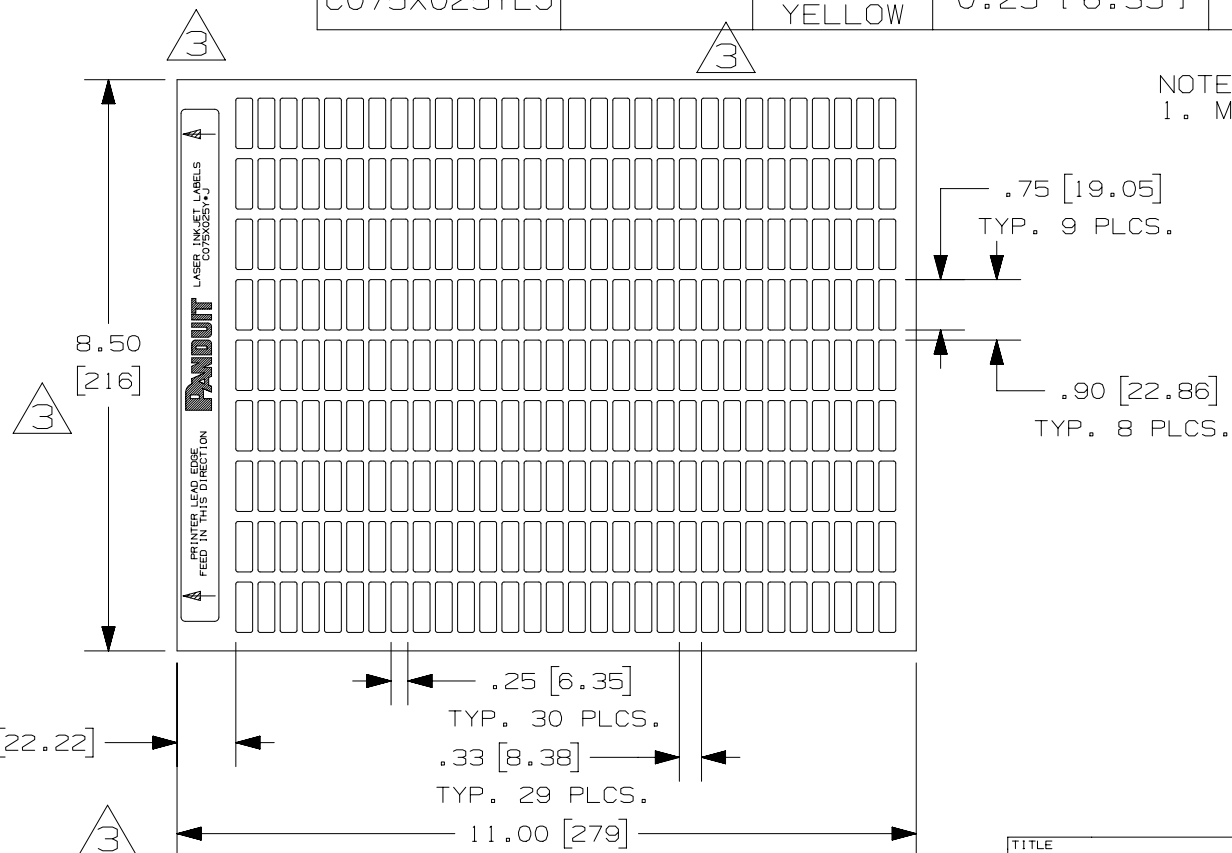
1

THIS COPY IS PROVIDED ON A RESTRICTED BASIS AND IS NOT TO BE USED IN ANY WAY DETRIMENTAL TO THE INTERESTS OF PANDUIT CORP.

PART NO.	MATERIAL	COLOR	MARKER SIZE	LABELS PER SHEET	SHEET PER PKG.	STANDARD PKG. QTY.
C075X025YJJ	GMY5	WHITE	0.75 [ 19.05 ]	270	38	10000
C075X025YLJ		SAFETY YELLOW	0.25 [ 6.35 ]			

## NOTES:

1. MILLIMETERS ARE IN [ ].



TITLE				C075X025YJJ and C075X025YLJ LASER/INKJET LABELS	
				CUSTOMER DRAWING	
ITEM REVISION NAME				100472DM/03	
DATASET FILE NAME				100472DM_DC_C10243/03D	
UNLESS OTHERWISE SPECIFIED, DIMENSIONAL TOLERANCES ARE: IN [ mm ]				MATERIAL:	
.x ± .12 [ 3.05 ]      .xxx ± .025 [ .635 ]				SEE TABLE	
.xx ± .062 [ 1.57 ]      ANGLES ±					
				THIRD ANGLE PROJECTION	
				DRAWING NUMBER:	
				C10243	
DRAWN BY	DATE	CHK	SCALE	SIZE	
RVU	9/29/04	JHAC	NTS	SHT 1 OF 1	
				A	

2

1