



Chipsmall Limited consists of a professional team with an average of over 10 year of expertise in the distribution of electronic components. Based in Hongkong, we have already established firm and mutual-benefit business relationships with customers from,Europe,America and south Asia,supplying obsolete and hard-to-find components to meet their specific needs.

With the principle of “Quality Parts,Customers Priority,Honest Operation,and Considerate Service”,our business mainly focus on the distribution of electronic components. Line cards we deal with include Microchip,ALPS,ROHM,Xilinx,Pulse,ON,Everlight and Freescale. Main products comprise IC,Modules,Potentiometer,IC Socket,Relay,Connector.Our parts cover such applications as commercial,industrial, and automotives areas.

We are looking forward to setting up business relationship with you and hope to provide you with the best service and solution. Let us make a better world for our industry!



## Contact us

Tel: +86-755-8981 8866 Fax: +86-755-8427 6832

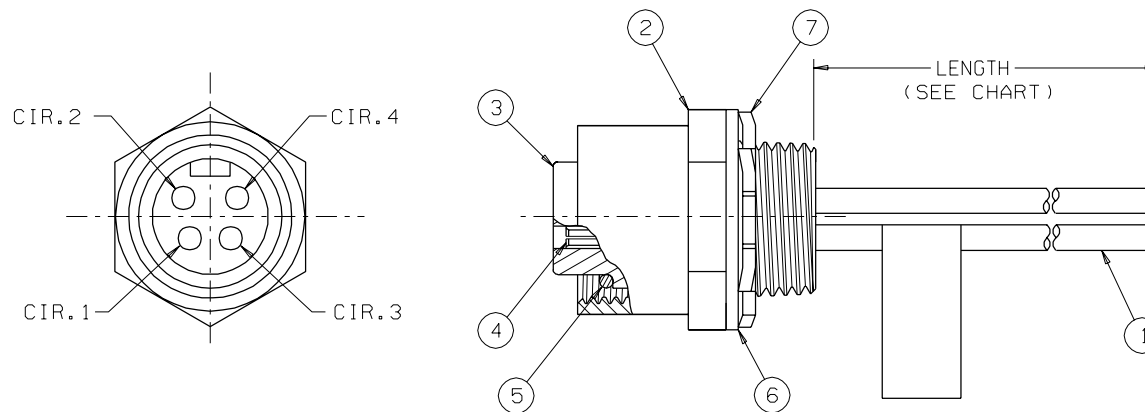
Email & Skype: [info@chipsmall.com](mailto:info@chipsmall.com) Web: [www.chipsmall.com](http://www.chipsmall.com)

Address: A1208, Overseas Decoration Building, #122 Zhenhua RD., Futian, Shenzhen, China



IO	
PART NO.	LENGTH
849150069	2M
849150070	3M
849150071	4M
849150072	5M



3		2		SD-84915-0070	
REV	DATE	ECN NO.		APPVD BY	REL BY
A	2-17-00	UM2000-0441 PROD. REL.		DW	
B	10-25-00	UM2001-0125			



P1	
1	BRN
2	WHT
3	BLU
4	BLK

## WIRING DIAGRAM

7	1	LOCKNUT	STEEL/ZINC PLATED
6	1	GASKET	NEOPRENE
5	1	O-RING	BUNA-N/COLOR:BLACK
4	4	CONTACT, SOCKET	CU ALLOY/GOLD PLATED
3	1	INSERT, SOCKET, 4/C	PVC/COLOR:YELLOW
2	1	RCPT. SHELL, INT. THD.	ALUMINUM/BLACK ANODIZED
1	SEE CHART	WIRE, 16 AWG.	PVC INSULATED
ITEM	QTY	DESCRIPTION	MATERIAL/FINISH

<div>QUALITY SYMBOLS</div> <div>MAJOR</div> <div>CRITICAL</div> <div>SPC</div>	UNLESS SPECIFIED:  ALL DIMENSIONS IN INCHES  GENERAL TOLERANCES:  3 PLACE ±.005 2 PLACE ±.01 ANGULAR ±.2°	SCALE ---	DWG SIZE B	 THIRD ANGLE PROJECTION	REVISE ON CAD ONLY
	Util-Mate CAGE CODE  58967	DRAWN BY & DATE GF 2-17-00	TITLE: MINI-C, RECEPTACLE, FEMALE, 4 POLE, 16 AWG., EURO		
		CHECKED BY & DATE SU 2-24-00			
		APPROVED BY & DATE DW 2-24-00	 MOLEX INCORPORATED Orange, CA 92668	PART NO. SEE CHART	DRAWING NO. SD-84915-0070
THIS DRAWING CONTAINS INFORMATION THAT IS PROPRIETARY TO MOLEX INCORPORATED AND SHOULD NOT BE USED WITHOUT WRITTEN PERMISSION.					REV B