



Chipsmall Limited consists of a professional team with an average of over 10 year of expertise in the distribution of electronic components. Based in Hongkong, we have already established firm and mutual-benefit business relationships with customers from,Europe,America and south Asia,supplying obsolete and hard-to-find components to meet their specific needs.

With the principle of "Quality Parts,Customers Priority,Honest Operation,and Considerate Service",our business mainly focus on the distribution of electronic components. Line cards we deal with include Microchip,ALPS,ROHM,Xilinx,Pulse,ON,Everlight and Freescale. Main products comprise IC,Modules,Potentiometer,IC Socket,Relay,Connector.Our parts cover such applications as commercial,industrial, and automotives areas.

We are looking forward to setting up business relationship with you and hope to provide you with the best service and solution. Let us make a better world for our industry!



## Contact us

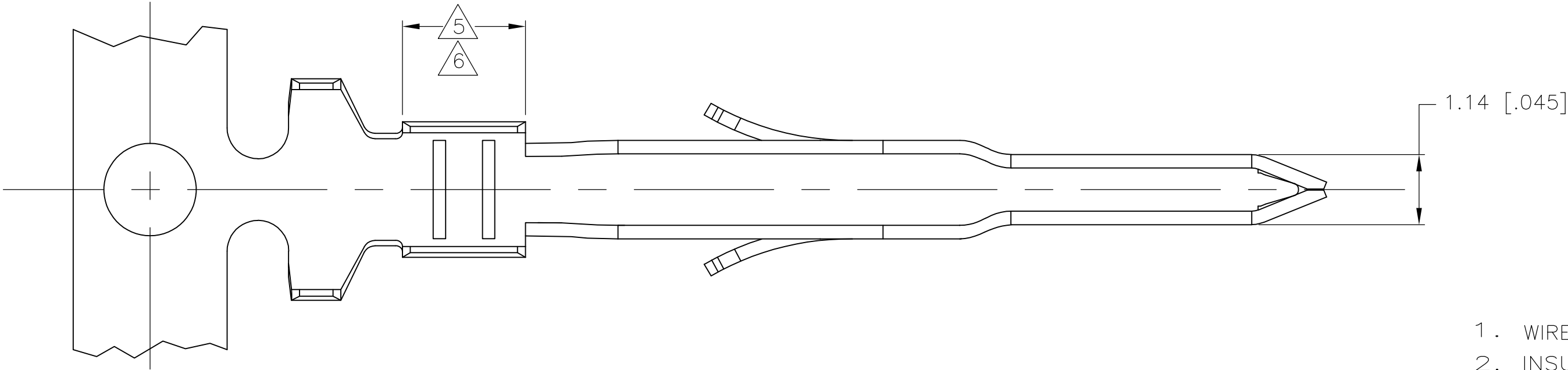
Tel: +86-755-8981 8866 Fax: +86-755-8427 6832

Email & Skype: [info@chipsmall.com](mailto:info@chipsmall.com) Web: [www.chipsmall.com](http://www.chipsmall.com)

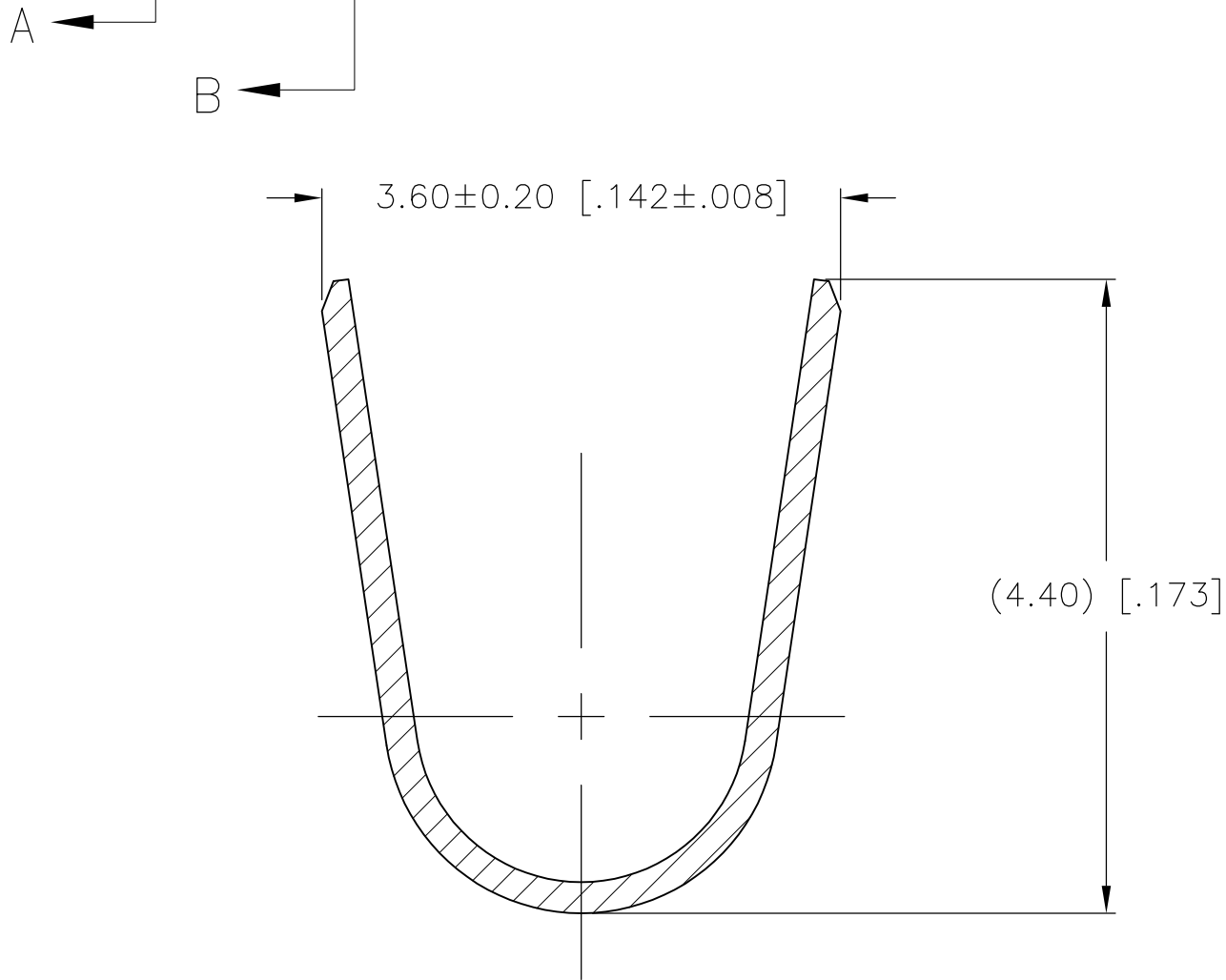
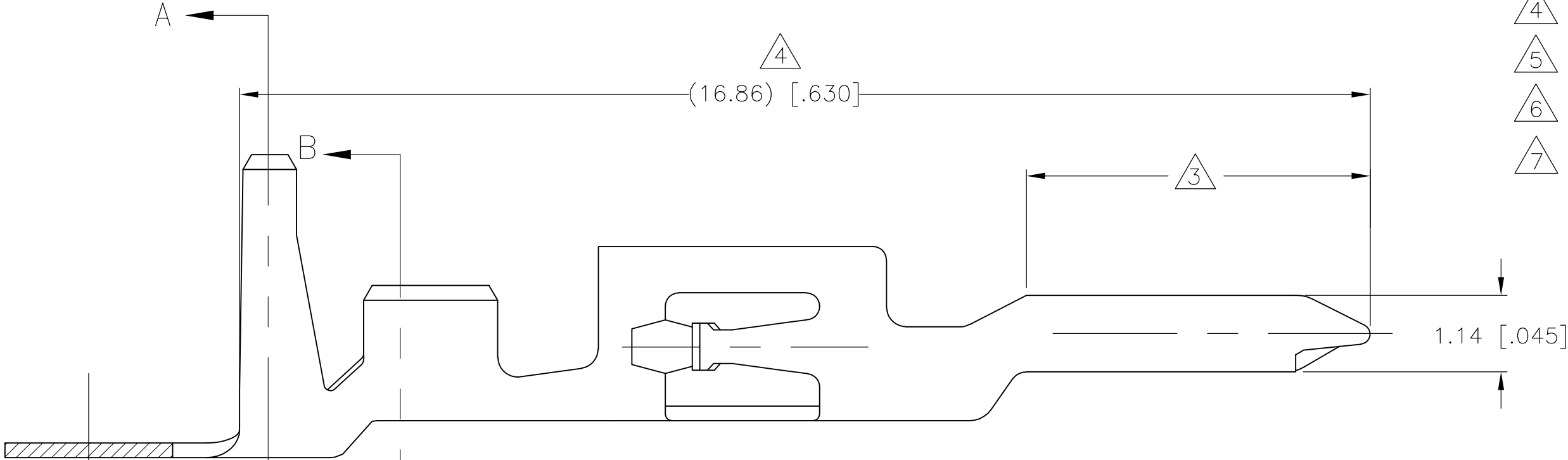
Address: A1208, Overseas Decoration Building, #122 Zhenhua RD., Futian, Shenzhen, China



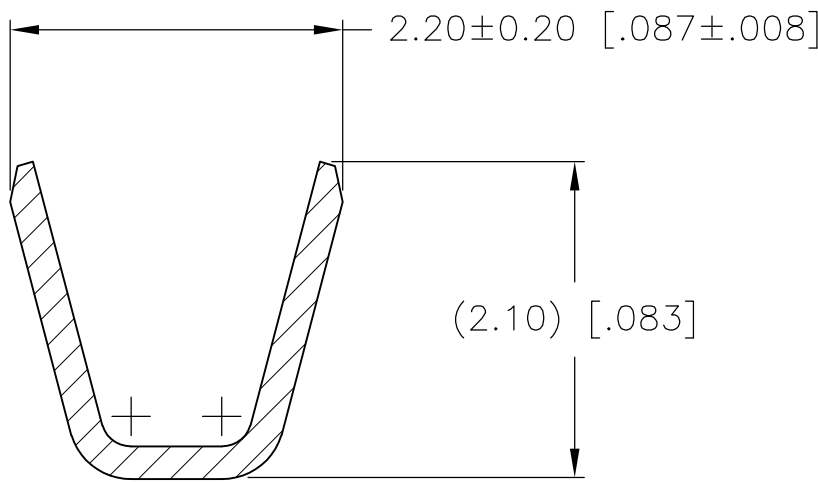
| LOC | DIST | REVISIONS |     |                           |          |             |
|-----|------|-----------|-----|---------------------------|----------|-------------|
|     |      | P         | LTR | DESCRIPTION               | DATE     | DWN<br>APVD |
| CM  | 00   |           | D   | REVISED PER 0G3B-1115-04  | 23JUNE05 | KW<br>DC    |
|     |      |           | D1  | REVISED PER ECO-09-023313 | 09OCT09  | KK<br>AEG   |



1. WIRE RANGE: 0.30-0.87mm<sup>2</sup> (22-18 AWG).
2. INSULATION RANGE: 1.50-2.40 DIA.
- 3 FINISH: 0.76μm MINIMUM GOLD OVER 1.27μm MINIMUM NICKEL REQUIRED
- 4 FINISH: NICKEL BASE PLATE ON ALL SURFACES IN THIS AREA.
- 5 FINISH: 2.54μm MINIMUM TIN-LEAD ON ALL SURFACES IN THIS AREA.
- 6 FINISH: 2.54μm MINIMUM TIN ON ALL SURFACES IN THIS AREA.
- 7 OBSOLETE PARTS: OBSOLETE CIS STREAMLINING PER D.RENAUD/D.SINISI



SECTION A-A  
SCALE 20:1



SECTION B-B  
SCALE 20:1

|   |         |   |   |                        |             |
|---|---------|---|---|------------------------|-------------|
| 7 | 3       | 4 | 6 | 0.22[.009] PHOS BRONZE | 794576-4    |
|   | 3       | 4 | 5 | 0.22[.009] PHOS BRONZE | 794576-2    |
|   | PRE-TIN |   |   | 0.22[.009] PHOS BRONZE | 794576-1    |
|   | FINISH  |   |   | MATERIAL               | PART NUMBER |

THIS DRAWING IS A CONTROLLED DOCUMENT.

DIMENSIONS:  
mm [INCHES]

MATERIAL  
0.22 [.009]PH BRZ

TOLERANCES UNLESS OTHERWISE SPECIFIED:

0 PLC ±  
1 PLC ±  
2 PLC ± 0.10 [.004]  
3 PLC ±  
4 PLC ±  
ANGLES ±  
FINISH SEE TABLE

DWN  
S. HOOVER  
07-FEB-2003

CHK  
D. COLEY  
07-FEB-2003

APVD  
D. COLEY  
07-FEB-2003

PRODUCT SPEC  
108-1646

APPLICATION SPEC  
114-6067

WEIGHT

CUSTOMER DRAWING

Tyco Electronics Corporation  
Harrisburg, Pa 17105-3608

NAME  
CONTACT, MALE,  
AMP-DUAC(TM)

SIZE  
A2

CAGE CODE  
00779

DRAWING NO  
C=794576

RESTRICTED TO  
-

SCALE  
14:1

SHEET  
1

OF  
1

REV  
D1