



Chipsmall Limited consists of a professional team with an average of over 10 year of expertise in the distribution of electronic components. Based in Hongkong, we have already established firm and mutual-benefit business relationships with customers from,Europe,America and south Asia,supplying obsolete and hard-to-find components to meet their specific needs.

With the principle of “Quality Parts,Customers Priority,Honest Operation,and Considerate Service”,our business mainly focus on the distribution of electronic components. Line cards we deal with include Microchip,ALPS,ROHM,Xilinx,Pulse,ON,Everlight and Freescale. Main products comprise IC,Modules,Potentiometer,IC Socket,Relay,Connector.Our parts cover such applications as commercial,industrial, and automotives areas.

We are looking forward to setting up business relationship with you and hope to provide you with the best service and solution. Let us make a better world for our industry!



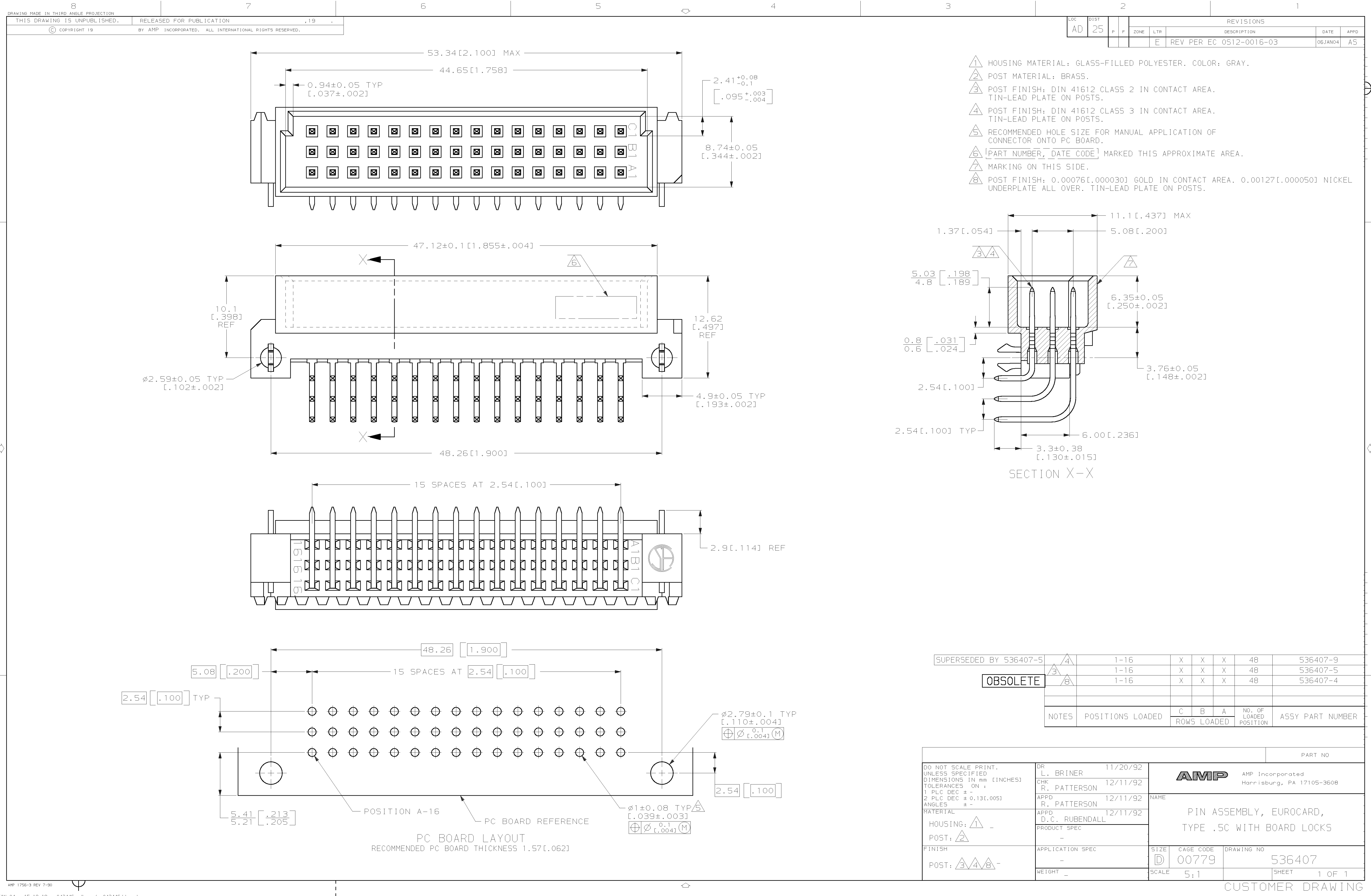
## Contact us

Tel: +86-755-8981 8866 Fax: +86-755-8427 6832

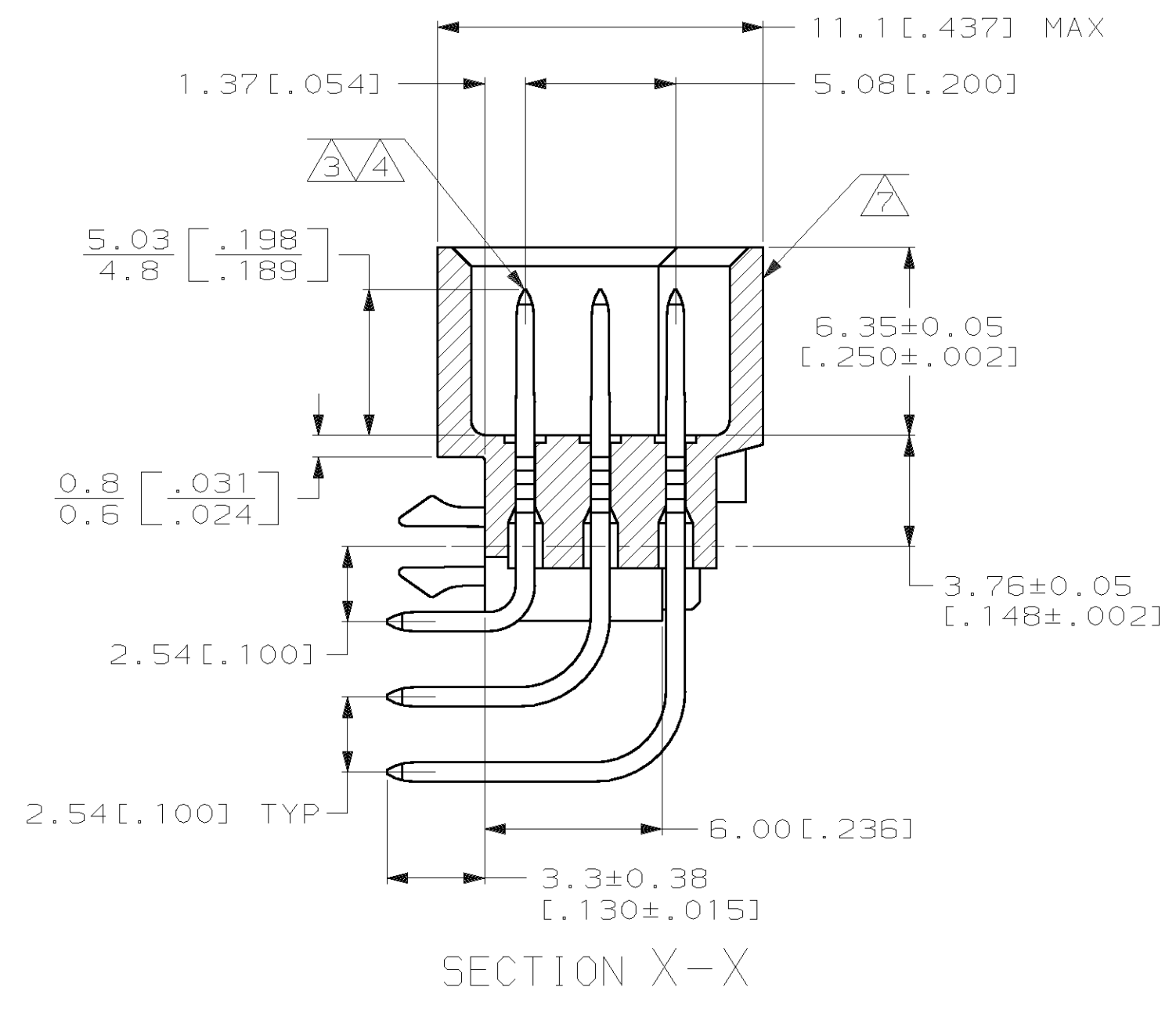
Email & Skype: [info@chipsmall.com](mailto:info@chipsmall.com) Web: [www.chipsmall.com](http://www.chipsmall.com)

Address: A1208, Overseas Decoration Building, #122 Zhenhua RD., Futian, Shenzhen, China











- 1 HOUSING MATERIAL: GLASS-FILLED POLYESTER. COLOR: GRAY.
- 2 POST MATERIAL: BRASS.
- 3 POST FINISH: DIN 41612 CLASS 2 IN CONTACT AREA. TIN-LEAD PLATE ON POSTS.
- 4 POST FINISH: DIN 41612 CLASS 3 IN CONTACT AREA. TIN-LEAD PLATE ON POSTS.
- 5 RECOMMENDED HOLE SIZE FOR MANUAL APPLICATION OF CONNECTOR ONTO PC BOARD.
- 6 [PART NUMBER, DATE CODE] MARKED THIS APPROXIMATE AREA.
- 7 MARKING ON THIS SIDE.
- 8 POST FINISH: 0.00076[0.000030] GOLD IN CONTACT AREA. 0.00127[0.000050] NICKEL UNDERPLATE ALL OVER. TIN-LEAD PLATE ON POSTS.



SUPERSEDED BY 536407-5		4	1-16	X	X	X	48	536407-9
		3	1-16	X	X	X	48	536407-5
OBSOLETE		8	1-16	X	X	X	48	536407-4
NOTES		POSITIONS LOADED		C	B	A	NO. OF LOADED POSITION	ASSY PART NUMBER

				PART NO			
DO NOT SCALE PRINT. UNLESS SPECIFIED DIMENSIONS IN mm [INCHES] TOLERANCES ON : 1 PLC DEC ± - 2 PLC DEC ± 0.131(.005) ANGLES ± -		DR L. BRINER 11/20/92		<div>AMP</div> <div>AMP Incorporated Harrisburg, PA 17105-3608</div>			
		CHK R. PATTERSON 12/11/92					
		APPD R. PATTERSON 12/11/92		NAME  PIN ASSEMBLY, EUROCARD, TYPE .5C WITH BOARD LOCKS			
		APPD D.C. RUBENDALL 12/11/92					
MATERIAL		PRODUCT SPEC					
HOUSING:  -		-					
POST:  -		-					
FINISH		APPLICATION SPEC		SIZE	CAGE CODE	DRAWING NO	
POST:    -		-			00779	536407	
		WEIGHT -		SCALE	5:1	SHEET 1 OF 1	

CUSTOMER DRAWING