



Chipsmall Limited consists of a professional team with an average of over 10 year of expertise in the distribution of electronic components. Based in Hongkong, we have already established firm and mutual-benefit business relationships with customers from,Europe,America and south Asia,supplying obsolete and hard-to-find components to meet their specific needs.

With the principle of “Quality Parts,Customers Priority,Honest Operation,and Considerate Service”,our business mainly focus on the distribution of electronic components. Line cards we deal with include Microchip,ALPS,ROHM,Xilinx,Pulse,ON,Everlight and Freescale. Main products comprise IC,Modules,Potentiometer,IC Socket,Relay,Connector.Our parts cover such applications as commercial,industrial, and automotives areas.

We are looking forward to setting up business relationship with you and hope to provide you with the best service and solution. Let us make a better world for our industry!



Contact us

Tel: +86-755-8981 8866 Fax: +86-755-8427 6832

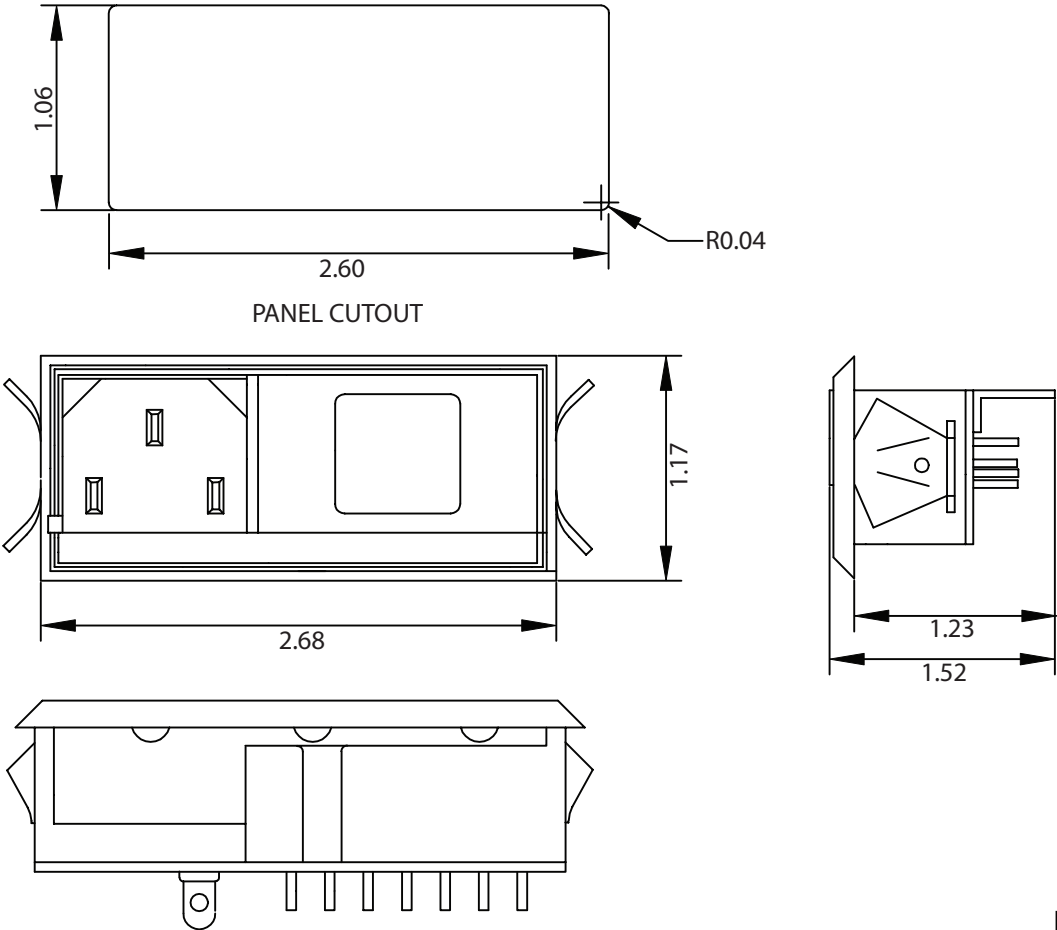
Email & Skype: info@chipsmall.com Web: www.chipsmall.com

Address: A1208, Overseas Decoration Building, #122 Zhenhua RD., Futian, Shenzhen, China

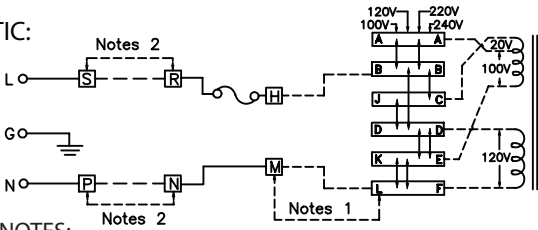


THESE DRAWINGS ARE THE PROPERTY OF QUALTEK ELECTRONICS AND NOT TO BE REPRODUCED FOR OR COMMUNICATED TO A THIRD PARTY WITHOUT THE EXPRESS WRITTEN PERMISSION OF AN OFFICER OF QUALTEK ELECTRONICS.

PHYSICAL DIMENSIONS:



ELECTRICAL SCHEMATIC:



NOTES:
1. JUMPER REQUIRED IF ONLY SPST POWER SWITCH IS USED.
2. JUMPER REQUIRED IF NO INPUT FILTER IS USED.

REVISION			
REV.	DESCRIPTION	DATE	APPROVED
B	RoHS Compliance	06-01-06	DP

ELECTRICAL CHARACTERISTICS:

- 1-1. VOLTAGE RATING.....115/250VAC
- 1-2. CURRENT RATING
 - A. @ 115 VAC15 A RMS MAX
 - B. @ 250 VAC5 A RMS MAX
- 1-3. OPERATING FREQUENCY..... 50-60Hz
- 1-4. LEAKAGE CURRENT EACH LINE TO GROUND
 - A. AT 115VAC 60Hz..... 2uA MAX.
 - B. AT 250VAC 50Hz..... 5uA MAX.
- 1-5. HIPOT RATING (FOR ONE MINUTE)
 - A. LINE TO GROUND.....2250 VDC
 - B. LINE TO LINE.....1450 VDC
- 1-6. MINIMUM INSULATION RESISTANCE: @ 500VDC
 - A. LINE & NEUTRAL TO GROUND.....10M OHM
 - B. LINE TO NEUTRAL.....10M OHM
- 1-7. VOLTAGE SELECTOR CARD: 100, 120, 220 OR 240 VAC INPUT VOLTAGE
- 1-8. RoHS COMPLIANT

PLASTIC CASE
SNAP-IN PANEL THICKNESS: 0.04~0.063IN
PANEL THICKNESS: 0.06~0.09IN
FLAMMABILITY CLASS UL94V-0

CONTROLLED

Dim range (mm)	Tolerance +/- (mm)	Qualtek Electronics Corp. PPC DIVISION		
		Part Number: 760-16/001	RoHS Compliant	
0-1	0.15	Description: MULTI-FUNCTION MODULE		
1-6	0.20			
6-18	0.30		UNIT: in	REV.B
18-50	0.50			
50-120	0.70	Drawn / Date	Checked / Date	Approved / Date
120-250	0.90	B.ZHANG 09-15-04	09-15-04	JJH / 09-15-04
250-500	1.20			