



Chipsmall Limited consists of a professional team with an average of over 10 year of expertise in the distribution of electronic components. Based in Hongkong, we have already established firm and mutual-benefit business relationships with customers from,Europe,America and south Asia,supplying obsolete and hard-to-find components to meet their specific needs.

With the principle of “Quality Parts,Customers Priority,Honest Operation,and Considerate Service”,our business mainly focus on the distribution of electronic components. Line cards we deal with include Microchip,ALPS,ROHM,Xilinx,Pulse,ON,Everlight and Freescale. Main products comprise IC,Modules,Potentiometer,IC Socket,Relay,Connector.Our parts cover such applications as commercial,industrial, and automotives areas.

We are looking forward to setting up business relationship with you and hope to provide you with the best service and solution. Let us make a better world for our industry!



## Contact us

Tel: +86-755-8981 8866 Fax: +86-755-8427 6832

Email & Skype: [info@chipsmall.com](mailto:info@chipsmall.com) Web: [www.chipsmall.com](http://www.chipsmall.com)

Address: A1208, Overseas Decoration Building, #122 Zhenhua RD., Futian, Shenzhen, China



## XWM-2406-GD-3 Wall Mount Enclosures - Wall Mount Enclosure



For more Information  
please call

1-800-793-2954

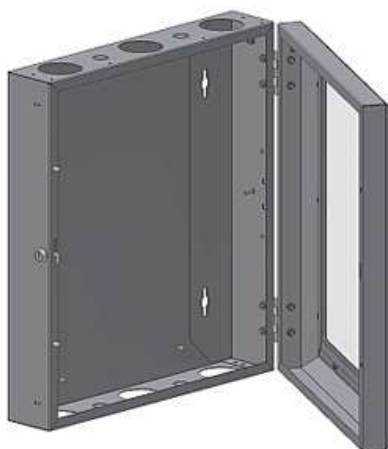


### General Description:

24" Wall Mount Enclosure, 6" Depth with Glass Door with Lock.

### Image

Image:



### Physical Characteristics (Encl-CM)

#### Color

Color: Black

#### Dimensions

Length/Height: 24 inches  
Depth: 6 inches  
Rack Unit: 12U  
Width: 21.25 inches

#### Material

Material: Steel  
Door: Glass

### Applicable Specifications and Agency Compliance (Overall)

#### Applicable Standards & Environmental Programs

UL Listing: UL & c-UL Listed 60950-1  
EU Directive 2002/95/EC (RoHS): Yes  
EU RoHS Compliance Date (mm/dd/yyyy): 06/01/2006

### Notes (Overall)

**Notes:** Cabinet is symmetrical; door swing direction reversible in the field.

### Product Accessories

#### Product Accessories:

Description	24 inches High Part Number
Plywood Backboard	XWM-2401
Mounting Screws - Bag of 50	8911-0100

### Put Ups and Colors:

Item #	Putup	Ship Weight	Color	Notes	Item Desc
--------	-------	-------------	-------	-------	-----------

## XWM-2406-GD-3 Wall Mount Enclosures - Wall Mount Enclosure

Revision Number: 1    Revision Date: 01-27-2010

© 2017 Belden, Inc.  
All Rights Reserved.

Although Belden makes every reasonable effort to ensure their accuracy at the time of this publication, information and specifications described herein are subject to error or omission and to change without notice, and the listing of such information and specifications does not ensure product availability. Belden provides the information and specifications herein on an "AS IS" basis, with no representations or warranties, whether express, statutory or implied. In no event will Belden be liable for any damages (including consequential, indirect, incidental, special, punitive, or exemplary damages) whatsoever, even if Belden has been advised of the possibility of such damages, whether in an action under contract, negligence or any other theory, arising out of or in connection with the use, or inability to use, the information or specifications described herein. All sales of Belden products are subject to Belden's standard terms and conditions of sale.

Belden believes this product to be in compliance with EU RoHS (Directive 2002/95/EC, 27-Jan-2003). Material manufactured prior to the compliance date may be in stock at Belden facilities and in our Distributor's inventory. The information provided in this Product Disclosure, and the identification of materials listed as reportable or restricted within the Product Disclosure, is correct to the best of Belden's knowledge, information, and belief at the date of its publication. The information provided in this Product Disclosure is designed only as a general guide for the safe handling, storage, and any other operation of the product itself or the one that it becomes a part of. This Product Disclosure is not to be considered a warranty or quality specification. Regulatory information is for guidance purposes only. Product users are responsible for determining the applicability of legislation and regulations based on their individual usage of the product.