



Chipsmall Limited consists of a professional team with an average of over 10 year of expertise in the distribution of electronic components. Based in Hongkong, we have already established firm and mutual-benefit business relationships with customers from,Europe,America and south Asia,supplying obsolete and hard-to-find components to meet their specific needs.

With the principle of “Quality Parts,Customers Priority,Honest Operation,and Considerate Service”,our business mainly focus on the distribution of electronic components. Line cards we deal with include Microchip,ALPS,ROHM,Xilinx,Pulse,ON,Everlight and Freescale. Main products comprise IC,Modules,Potentiometer,IC Socket,Relay,Connector.Our parts cover such applications as commercial,industrial, and automotives areas.

We are looking forward to setting up business relationship with you and hope to provide you with the best service and solution. Let us make a better world for our industry!



Contact us

Tel: +86-755-8981 8866 Fax: +86-755-8427 6832

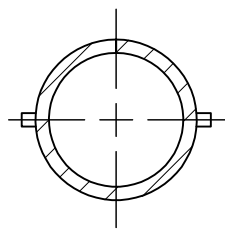
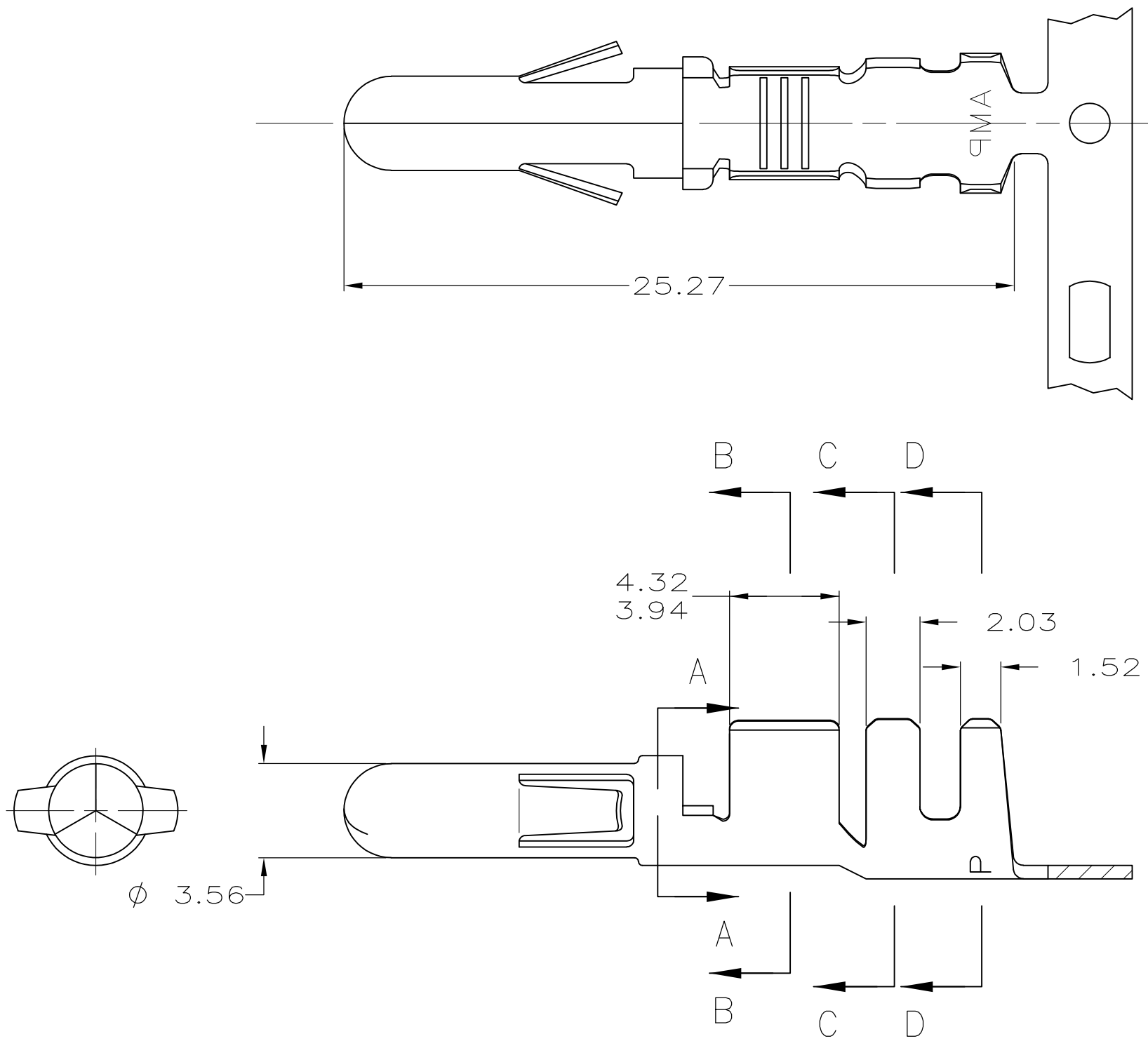
Email & Skype: info@chipsmall.com Web: www.chipsmall.com

Address: A1208, Overseas Decoration Building, #122 Zhenhua RD., Futian, Shenzhen, China

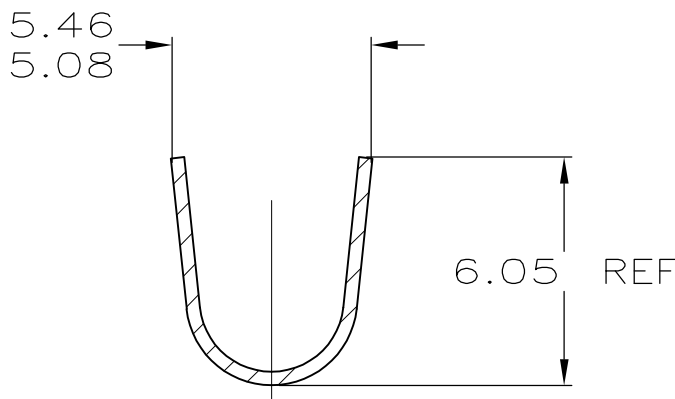


LOC	DIST	REVISIONS				
CM	53	P	LTR	DESCRIPTION	DATE	APVD
		E1		REVISED PER ECO-11-004917	11MAR11	RK HMR

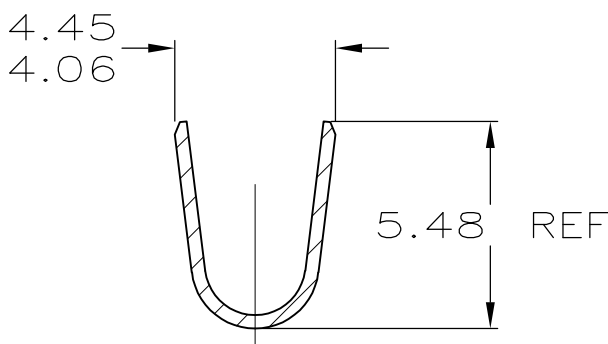
1. WIRE RANGE: 2 – 6 mm² (14 – 10 AWG)
2. INSULATION RANGE: 2.54 – 4.57



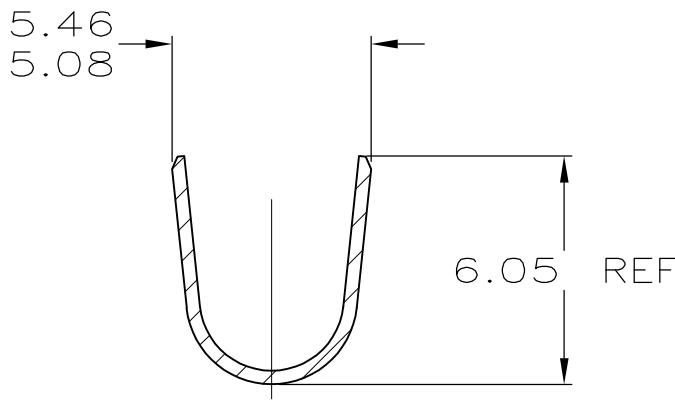
SECTION A—A



SECTION C—C

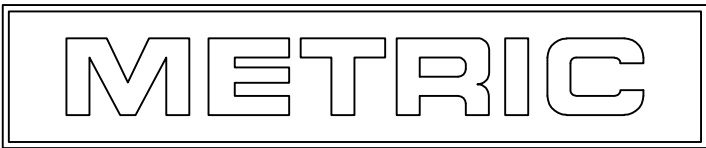


SECTION B—B



SECTION D—D

2.03	.080	4.32	.170	5.48	.216	—	—
1.52	.060	4.06	.160	5.46	.215	—	—
0.36	.014	3.94	.155	5.08	.200	—	—
0.35	.014	3.56	.140	4.57	.180	25.27	.995
0.13	.005	2.54	.100	4.45	.175	6.05	.238
MM	IN	MM	IN	MM	IN	MM	IN
CONVERSION TABLE							



PRE TIN	0.36 PH BRZ	350201-2
PRE TIN	0.35 BRASS	350201-1
FINISH	MATERIAL	PART NUMBER

THIS DRAWING IS A CONTROLLED DOCUMENT.		DWN T. BECK 29OCT1998	TE Connectivity			
DIMENSIONS: mm		CHK R. SWING 29OCT1998				
		APVD C. MARTIN 16NOV1998	NAME PIN, .140 PIN & SOCKET CONNECTOR			
		PRODUCT SPEC				
TOLERANCES UNLESS OTHERWISE SPECIFIED:		—				
0 PLC ± -		—				
1 PLC ± -		—				
2 PLC ± 0.13		—				
3 PLC ± -		—				
4 PLC ± -		—				
ANGLES ± -		—				
FINISH		—				
MATERIAL SEE TABLE		WEIGHT —	SIZE A2	CAGE CODE 00779	DRAWING NO C-350201	RESTRICTED TO —
SEE TABLE		CUSTOMER DRAWING	SCALE 5:1	SHEET 1 of 1	REV E1	