



Chipsmall Limited consists of a professional team with an average of over 10 year of expertise in the distribution of electronic components. Based in Hongkong, we have already established firm and mutual-benefit business relationships with customers from,Europe,America and south Asia,supplying obsolete and hard-to-find components to meet their specific needs.

With the principle of “Quality Parts,Customers Priority,Honest Operation,and Considerate Service”,our business mainly focus on the distribution of electronic components. Line cards we deal with include Microchip,ALPS,ROHM,Xilinx,Pulse,ON,Everlight and Freescale. Main products comprise IC,Modules,Potentiometer,IC Socket,Relay,Connector.Our parts cover such applications as commercial,industrial, and automotives areas.

We are looking forward to setting up business relationship with you and hope to provide you with the best service and solution. Let us make a better world for our industry!



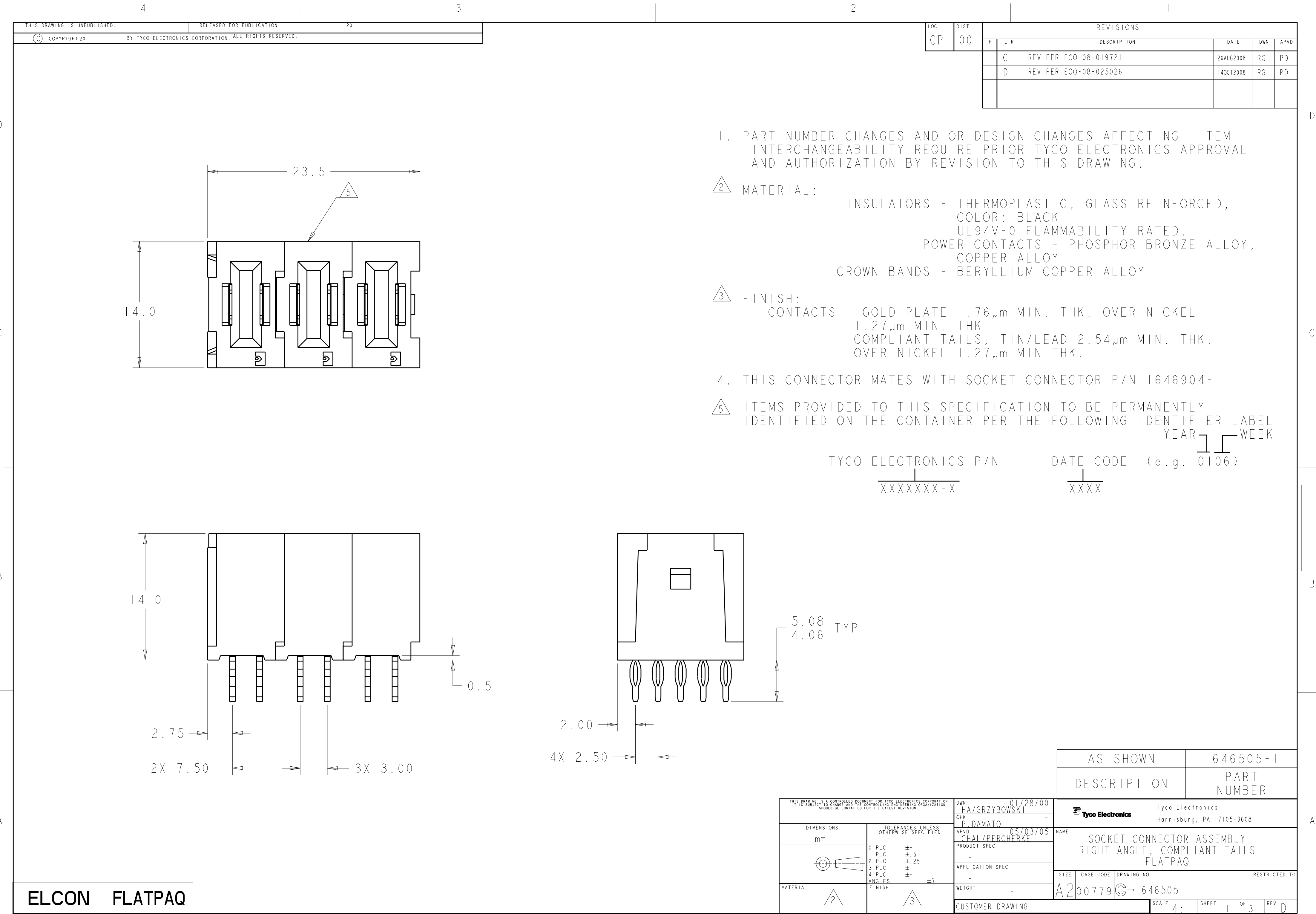
Contact us

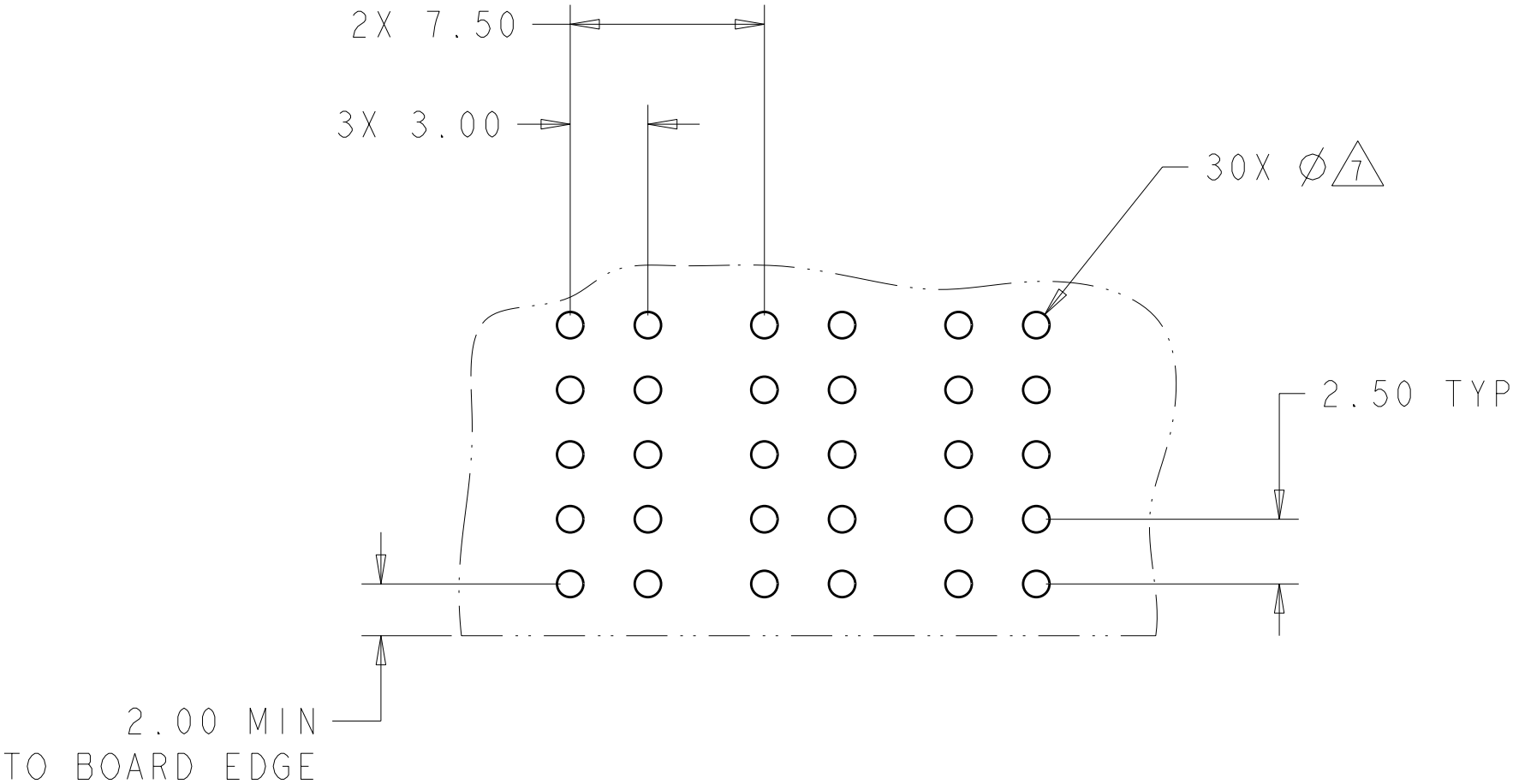
Tel: +86-755-8981 8866 Fax: +86-755-8427 6832

Email & Skype: info@chipsmall.com Web: www.chipsmall.com

Address: A1208, Overseas Decoration Building, #122 Zhenhua RD., Futian, Shenzhen, China







PRINTED CIRCUIT LAYOUT
COMPONENT SIDE

CONNECTOR	CATALOG MODULE #	QTY	SIZE NO.	CONTACT QTY	MATING PIN	MAX. CURRENT (PER CONTACT)	CONTACT SPACING	VOLTAGE RATING
SOCKET	FP200	3	8	3	1.25 X 7.00 [.049 X .276]	35 amps	7.50 [.2953]	250 VOLTS

ELCON FLATPAQ

THIS DRAWING IS A CONTROLLED DOCUMENT FOR TYCO ELECTRONICS CORPORATION
IT IS SUBJECT TO CHANGE AND THE CONTROLLING ENGINEERING ORGANIZATION
SHOULD BE CONTACTED FOR THE LATEST REVISION.

DIMENSIONS:

mm

MATERIAL

-

TOLERANCES UNLESS
OTHERWISE SPECIFIED:

0 PLC ±.5
1 PLC ±.5
2 PLC ±.25
3 PLC ±.
4 PLC ±.
ANGLES ±5
FINISH

-

DWN
HA/GRZYBOWSKI
CHK
P.DAMATO
APVD
CHAU/PERCHERKE

01/28/00
-
05/03/05

PRODUCT SPEC
-
APPLICATION SPEC
-
WEIGHT
-
CUSTOMER DRAWING

Tyco Electronics
Harrisburg, PA 17105-3608

NAME
SOCKET CONNECTOR ASSEMBLY
RIGHT ANGLE, COMPLIANT TAILS
FLATPAQ

SIZE
A2

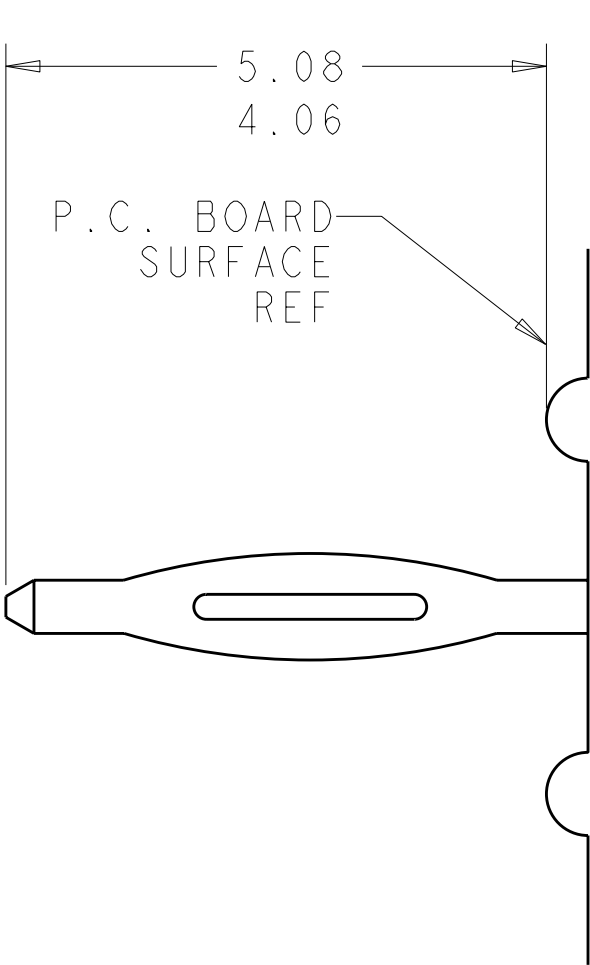
CAGE CODE
00779

DRAWING NO
C-1646505

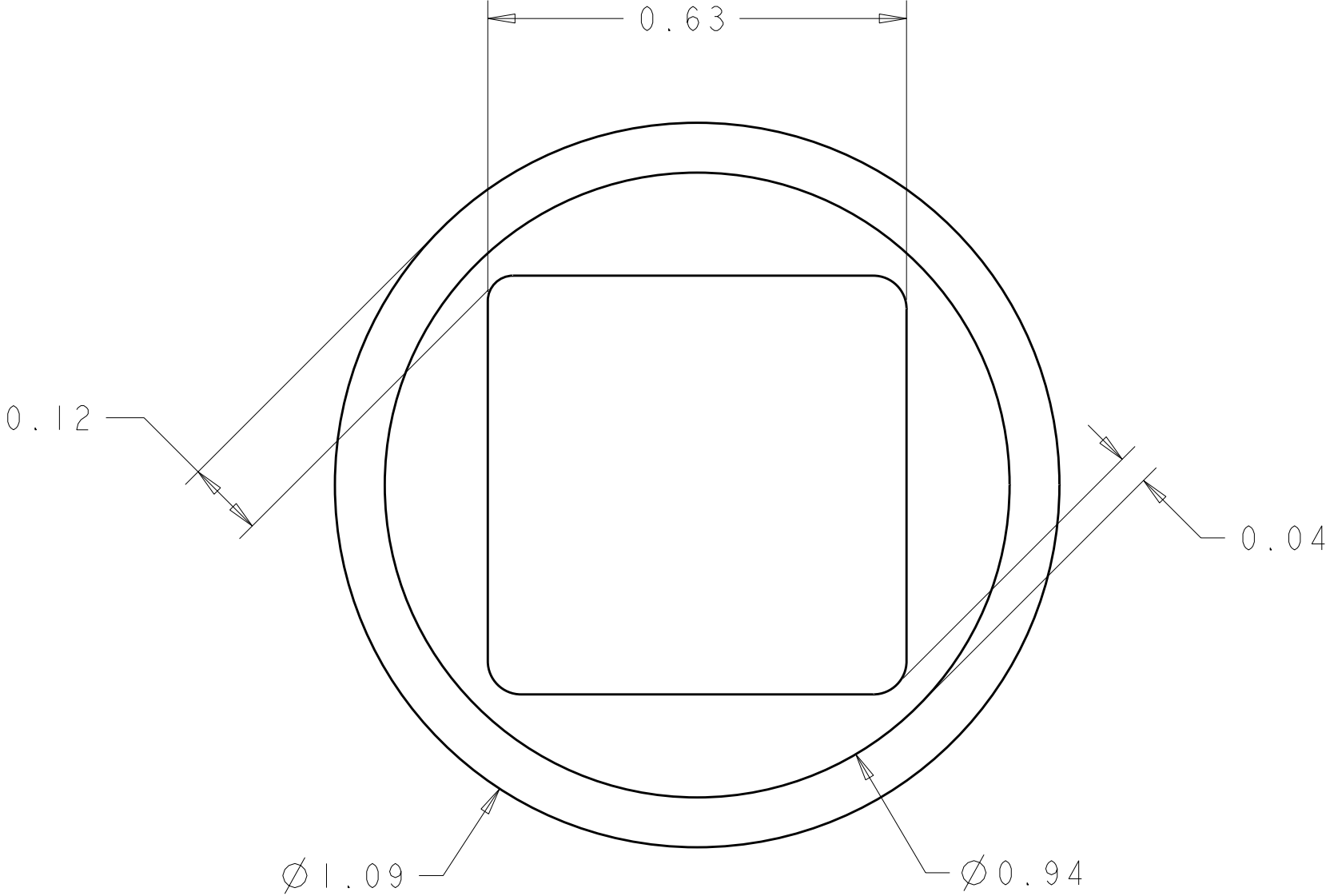
RESTRICTED TO
-

SCALE 4:1 SHEET 2 OF 3 REV D

LOC	DIST	REVISIONS					
GP	00	P	LTR	DESCRIPTION	DATE	DWN	APVD
			-	SEE SHEET 1	-	-	-



6. COMPLIANT PIN DETAIL
SCALE 10 : 1
INSERTION/EXTRACTION FORCES
MAXIMUM PUSH IN: 133.3N PER PIN
[30 LBS]
MINIMUM PUSH OU: 44.4N PER PIN
[10 LBS]



7. SOLDER TERMNIATION AREA
SCALE 40:1
RECOMMENDED PRINTED CIRCUIT HOLE
COMPLIANT PRESS FIT
DRILLED HOLE: Ø1.15 [.0453] ±.013 [.0005]
COPPER PLATE: .025 [.0010] TO .050 [.0020]
TIN PLATE: .0005 [.000020] MIN. (PER SURFACE)