



Chipsmall Limited consists of a professional team with an average of over 10 year of expertise in the distribution of electronic components. Based in Hongkong, we have already established firm and mutual-benefit business relationships with customers from,Europe,America and south Asia,supplying obsolete and hard-to-find components to meet their specific needs.

With the principle of “Quality Parts,Customers Priority,Honest Operation,and Considerate Service”,our business mainly focus on the distribution of electronic components. Line cards we deal with include Microchip,ALPS,ROHM,Xilinx,Pulse,ON,Everlight and Freescale. Main products comprise IC,Modules,Potentiometer,IC Socket,Relay,Connector.Our parts cover such applications as commercial,industrial, and automotives areas.

We are looking forward to setting up business relationship with you and hope to provide you with the best service and solution. Let us make a better world for our industry!



## Contact us

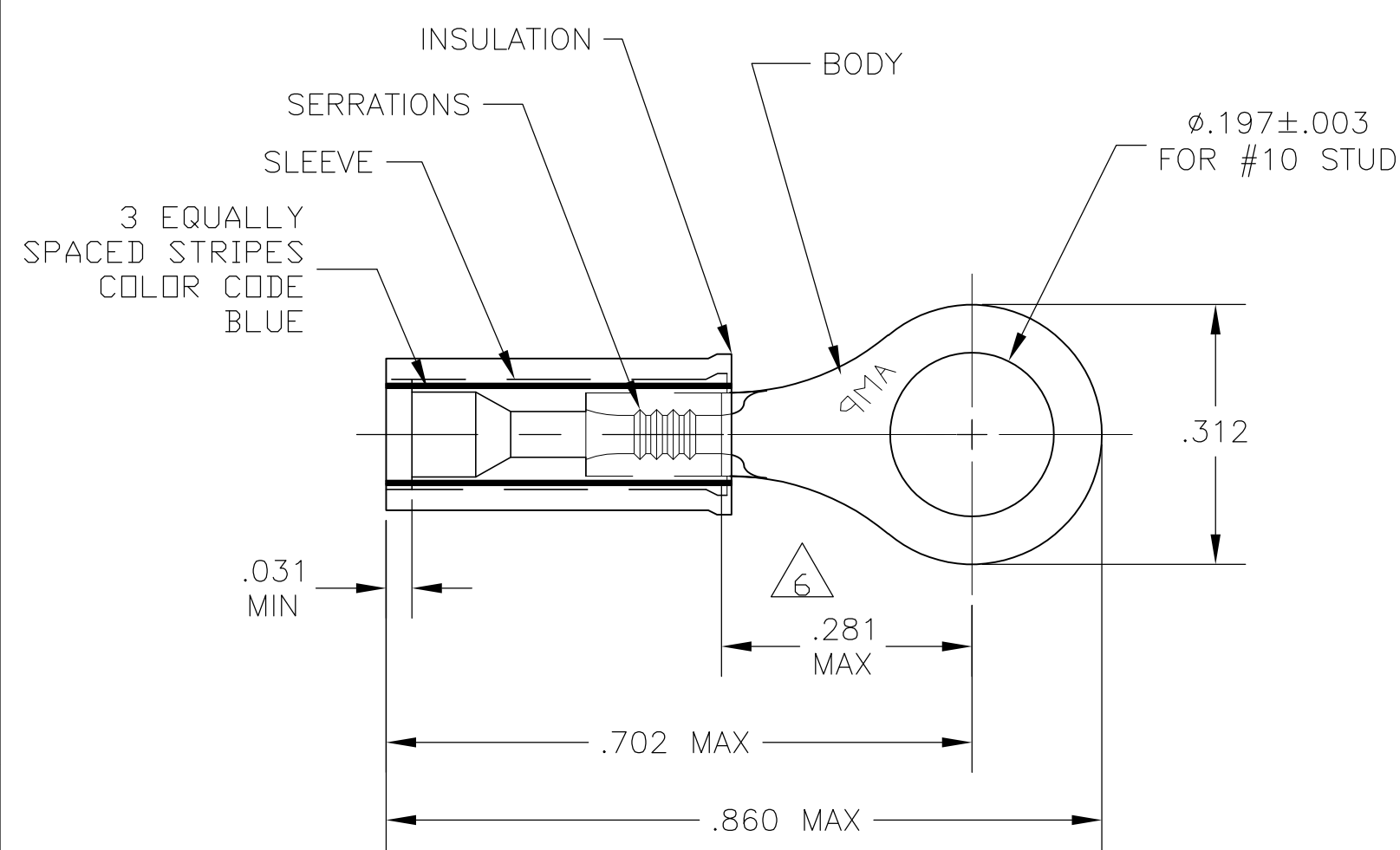
Tel: +86-755-8981 8866 Fax: +86-755-8427 6832

Email & Skype: [info@chipsmall.com](mailto:info@chipsmall.com) Web: [www.chipsmall.com](http://www.chipsmall.com)

Address: A1208, Overseas Decoration Building, #122 Zhenhua RD., Futian, Shenzhen, China




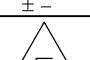


2		1				
LOC	DIST	REVISIONS				
G	14	P	LTR	DESCRIPTION	DATE	APVD
			F1	REV PER ECR 10-000950	14JAN10	JR TM



- 1 MUST BE CRIMPED WITH A 22-18 OR 22-16 PIDG ( RED ) TOOL.
- 2 WIRE INSULATION DIA: .031-.055
- 3 TONGUE MATERIAL THK: .027±.002
- 4 BODY & SLEEVE: TIN .000100 MIN THK PER ASTM B545.
- 5 MATERIAL: BODY & SLEEVE- CU PER ASTM B152 INSULATION - NYLON PER ASTM D4066 COLOR - YELLOW
- 6 APPLIES FROM EDGE OF METAL BBL TO THE CENTER OF STUD HOLE.
- 7 MEETS M7928/1-10, CLASS 1 & 2

5000	ON TAPE, REEL	53057-1
1000	LOOSE PIECE	7 53057
QTY	PACKAGE TYPE	PART NO.

CUSTOMER SERVICE SYSTEMS			MAX RECOMMENDED OPERATING TEMPERATURE:  150°C MAX		THIS DRAWING IS A CONTROLLED DOCUMENT.			DWN JR RUTH 14JAN10		 Tyco Electronics Corporation Harrisburg, Pa 17105-3608															
FOR ADDITIONAL PRODUCT INFORMATION OR COPIES OF DRAWINGS AND TECHNICAL DOCUMENTS		PRODUCT INFORMATION CENTER  1-800-522-6752		VOLTAGE RATING: 300 V MAX		DIMENSIONS:		TOLERANCES UNLESS OTHERWISE SPECIFIED:		CHK T MICHIELUTTI 15JAN10		NAME  TERMINAL, RING TONGUE, PIDG, INSULATION RESTRICTING WIRE SIZE: 24 AWG													
						INCHES																			
FOR APPLICATION		TOOLING ASSISTANCE CENTER		CIRCULAR MIL AREA:  0.10-0.26mm² [202-509] STRANDED				APVD T MICHIELUTTI 15JAN10		SIZE A3					CAGE CODE 00779		DRAWING NO C-53057		RESTRICTED TO  —						
TOOLING INFORMATION		1-800-722-1111						PRODUCT SPEC  — —													APPLICATION SPEC  — —		WEIGHT  —		
FOR ORDER ENTRY		1-800-526-5142						THIS DRAWING IS A CONTROLLED DOCUMENT FOR AMP INCORPORATED. IT IS SUBJECT TO CHANGE AND THE CONTROLLING ENGINEERING ORGANIZATION SHOULD BE CONTACTED FOR THE LATEST REVISION.													MATERIAL  — 		FINISH  — 		CUSTOMER DRAWING