



Chipsmall Limited consists of a professional team with an average of over 10 year of expertise in the distribution of electronic components. Based in Hongkong, we have already established firm and mutual-benefit business relationships with customers from,Europe,America and south Asia,supplying obsolete and hard-to-find components to meet their specific needs.

With the principle of “Quality Parts,Customers Priority,Honest Operation,and Considerate Service”,our business mainly focus on the distribution of electronic components. Line cards we deal with include Microchip,ALPS,ROHM,Xilinx,Pulse,ON,Everlight and Freescale. Main products comprise IC,Modules,Potentiometer,IC Socket,Relay,Connector.Our parts cover such applications as commercial,industrial, and automotives areas.

We are looking forward to setting up business relationship with you and hope to provide you with the best service and solution. Let us make a better world for our industry!



## Contact us

Tel: +86-755-8981 8866 Fax: +86-755-8427 6832

Email & Skype: [info@chipsmall.com](mailto:info@chipsmall.com) Web: [www.chipsmall.com](http://www.chipsmall.com)

Address: A1208, Overseas Decoration Building, #122 Zhenhua RD., Futian, Shenzhen, China



4

3

2

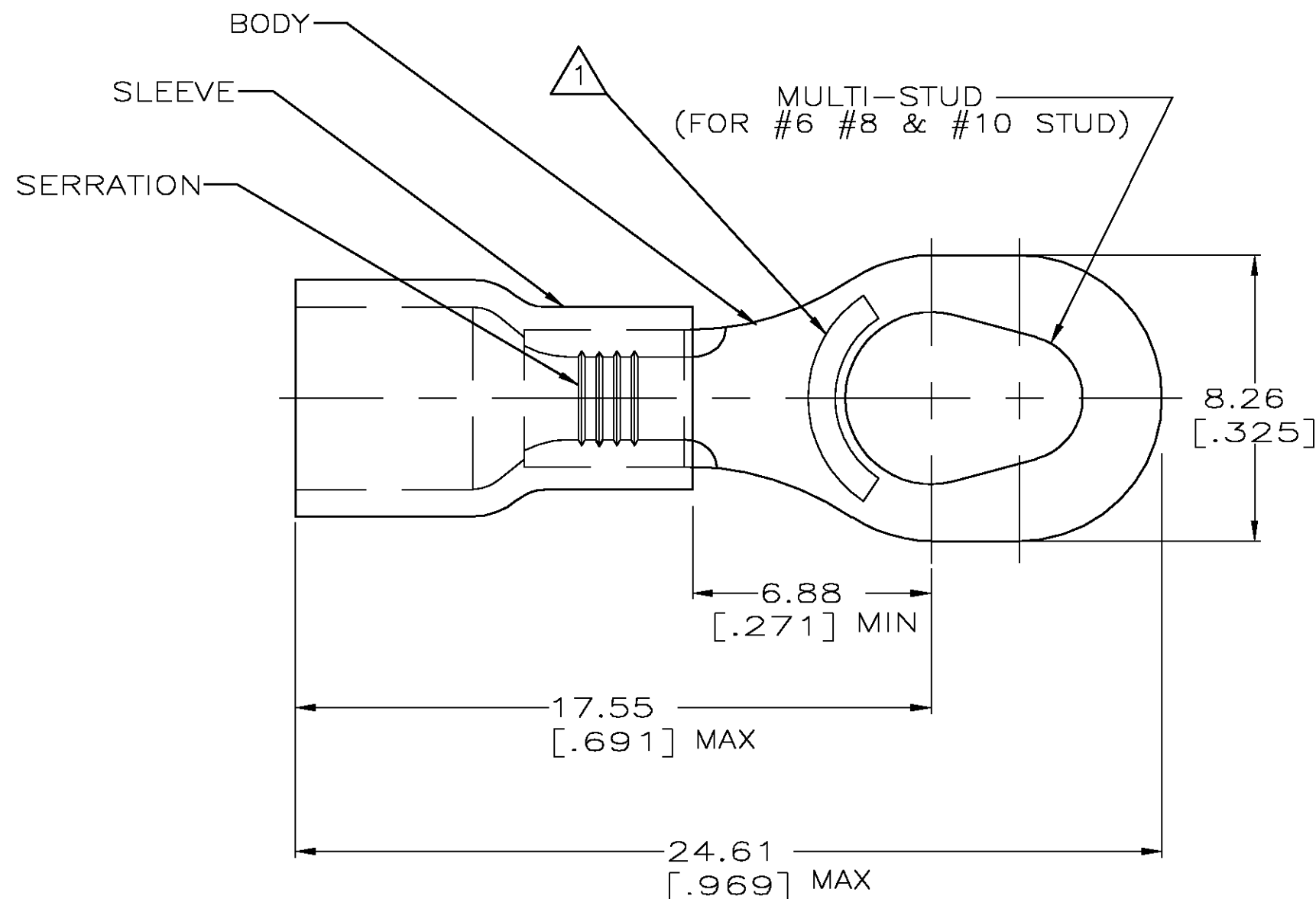
1

THIS DRAWING IS UNPUBLISHED.

RELEASED FOR PUBLICATION

© COPYRIGHT - BY TYCO ELECTRONICS CORPORATION. ALL RIGHTS RESERVED.

LOC	DIST	REVISIONS				
P	LTR	DESCRIPTION	DATE	DWN	APVD	
G	14	B	REDRAWN PER 60720-0540-95	24AUG04	JR	TM



<b>AMP</b> WIRE RANGE	Listed FILE E13288	LR7189 Certified
22-16 AWG SOLID OR STRANDED	22-16 AWG SOLID OR STRANDED	22-16 AWG SOLID OR STRANDED

- 1 STAMP AMP 22-18\* 1-2 APPROX AS SHOWN  
22-16 TERMINALS ARE STAMPED 22-18 IN  
ACCORDANCE WITH MILITARY SPEC MIL-T-7928  
COMMERCIAL WIRE RANGE IS 22-16
2. WIRE INSUL DIA, 2.03-3.18 [.080-.125]
3. TONGUE MATL THK, 0.79±0.05 [.031±.002]
- 4 MATERIAL: BODY - CU PER ASTM B152  
SLEEVE - PVC, COLOR - RED

-	-	-
5000	ON TAPE, REEL	54774-2
1000	LOOSE PIECE	54774-1
QTY	PACKAGE TYPE	PART NO

## AMP INCORPORATED CUSTOMER SERVICE SYSTEMS

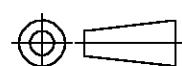
FOR ADDITIONAL  
PRODUCT INFORMATION OR  
COPIES OF DRAWINGS  
AND TECHNICAL DOCUMENTSPRODUCT INFORMATION CENTER  
1-800-522-6752FOR APPLICATION  
TOOLING INFORMATIONTOOLING ASSISTANCE CENTER  
1-800-722-1111

FOR ORDER ENTRY

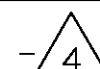
1-800-526-5142

THIS DRAWING IS A CONTROLLED DOCUMENT FOR  
AMP INCORPORATED. IT IS SUBJECT TO CHANGE  
AND THE CONTROLLING ENGINEERING ORGANIZATION  
SHOULD BE CONTACTED FOR THE LATEST REVISION.MAX RECOMMENDED OPERATING  
TEMPERATURE:  
105°C [221°F]VOLTAGE RATING:  
600V MAX  
(1000V FIXTURE OR SIGN)CIRCULAR MIL AREA:  
0.26-1.65mm² [509-3260]  
SOLID OR STRANDED

THIS DRAWING IS A CONTROLLED DOCUMENT.

DIMENSIONS:  
mm [INCHES]

MATERIAL

TOLERANCES UNLESS  
OTHERWISE SPECIFIED:0 PLC ± -  
1 PLC ± -  
2 PLC ± 0.20 [.008]  
3 PLC ± -  
4 PLC ± -  
ANGLES ± -FINISH  
TIN PER ASTM B545

DWN L OLMEDA 05SEP95

CHK M ELLIS 05SEP95

APVD G NGO 05SEP95

PRODUCT SPEC

UL 486A

APPLICATION SPEC

WEIGHT -

CUSTOMER DRAWING

**tyco**  
**Electronics**Tyco Electronics Corporation  
Harrisburg, Pa 17105-3608NAME  
TERMINAL, RING, MULTI-STUD,  
PLASTI-GRIP  
WIRE SIZE: 22-16

SIZE A3 CAGE CODE 00779 DRAWING NO C-54774 RESTRICTED TO -

SCALE 6:1 SHEET 1 OF 1 REV B