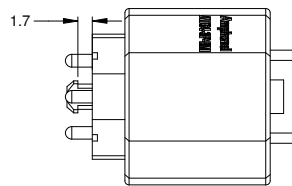
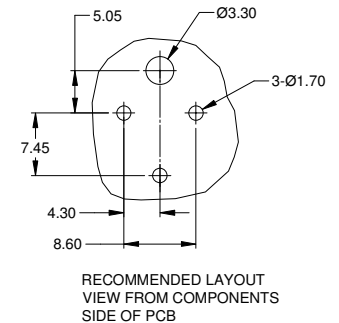
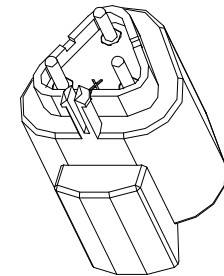
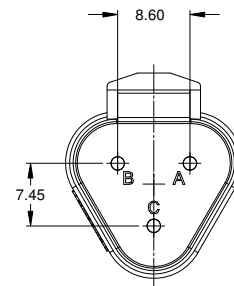
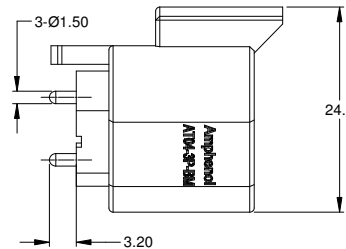
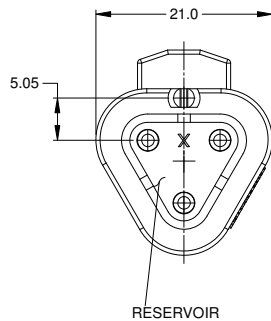
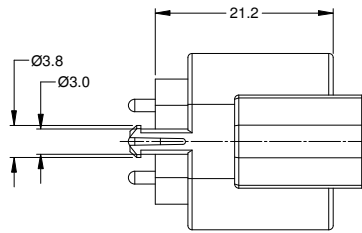


REVISIONS					
REV	ECO	DESCRIPTION	DATE	BY	APPR
A1	-	RELEASE NEW DWG FORMAT	NOV/07/15	SULLEN	TOMMY



NOTES: UNLESS OTHERWISE SPECIFIED

- MATERIAL:
HOUSING: THERMOPLASTIC; COLOR: BLACK
CONTACT: COPPER ALLOY
- MODIFICATIONS: PCB MOUNT
- SPECIFICATIONS:
 - CURRENT RATING: 13 AMPS
 - OPERATING TEMPERATURE: -55°C TO +125°C
 - DIELECTRIC WITHSTANDING VOLTAGE: LESS THAN 2 MILLIAMPS CURRENT LEAKAGE @ 1500 VOLTS AC.
 - INSULATION RESISTANCE: 1000 MEGOHMS MIN @ 25°C.
 - MOISTURE RESISTANCE: IP67 (MATED CONDITION)
 - MATING CYCLE DURABILITY: 100 CYCLES
 - RoHS COMPLIANT
- MATING PART: AT06-3S* PLUG
(* = MODIFICATIONS AND COLORS)
- ALL DIMENSIONS ARE FOR REFERENCE USE ONLY.

AT04-3P-BMXX VARIANTS		
CONTACT PLATING	POTTING OR NOT IN RESERVOIR	PART NUMBER
GOLD	NO POTTING	AT04-3P-BM01
GOLD	POTTING	AT04-3P-BM02
NICKEL	NO POTTING	AT04-3P-BM03
NICKEL	POTTING	AT04-3P-BM04

SEE PART NUMBER		CHART		DESCRIPTION		ITEM	
QUANTITY	PART NUMBER	MATERIALS LIST					
UNLESS OTHERWISE SPECIFIED							
1) All dimensions are in metric (mm).							
2) Tolerances are as follows:							
1 PL DEC ±0.30 Fractions ±1/64							
2 PL DEC ±0.15 Angles ±1°							
3 PL DEC ±0.08							
3) Note reference =							
SIGNATURES		DATE		 Sine Systems - www.amphenol-sine.com 44724 Morley Drive Clinton Township, MI 48036			
DRAWN: SULLEN,ZHANG		07/NOV/15					
CHECKED: ORION,LI		07/NOV/15					
ENGINEER:							
APPROVAL: TOMMY,XIE		07/NOV/15		RECEPTACLE, 3 PIN, PCB, BOARD MOUNT			
MATERIAL SPECIFICATIONS:		CUSTOMER:		SCALE: NONE			
PROCESS SPECIFICATIONS:		THIS DRAWING IS SUPPLIED FOR INFORMATION ONLY. DESIGN FEATURES, SPECIFICATIONS AND PERFORMANCE DATA SHOWN HEREON ARE THE PROPERTY OF THE AMPHENOL CORPORATION. NO RIGHTS OF REPRODUCTION ARE IMPLIED. ALL DIMENSIONS ARE SUBJECT TO NORMAL MANUFACTURING VARIATIONS.		SIZE: B C-	TYPE: NONE	DWG NO: AT04-3P-BMXX	REVISION: A1
NEXT ASSY:				SHEET 1 OF 1			

TITLE: RECEPTACLE, 3 PIN,PCB,BOARD MOUNT
DWG NO.: AT04-3P-BMXX
REV: A1
SH: 1
OF: 1