



Chipsmall Limited consists of a professional team with an average of over 10 year of expertise in the distribution of electronic components. Based in Hongkong, we have already established firm and mutual-benefit business relationships with customers from,Europe,America and south Asia,supplying obsolete and hard-to-find components to meet their specific needs.

With the principle of “Quality Parts,Customers Priority,Honest Operation,and Considerate Service”,our business mainly focus on the distribution of electronic components. Line cards we deal with include Microchip,ALPS,ROHM,Xilinx,Pulse,ON,Everlight and Freescale. Main products comprise IC,Modules,Potentiometer,IC Socket,Relay,Connector.Our parts cover such applications as commercial,industrial, and automotives areas.

We are looking forward to setting up business relationship with you and hope to provide you with the best service and solution. Let us make a better world for our industry!



## Contact us

Tel: +86-755-8981 8866 Fax: +86-755-8427 6832

Email & Skype: [info@chipsmall.com](mailto:info@chipsmall.com) Web: [www.chipsmall.com](http://www.chipsmall.com)

Address: A1208, Overseas Decoration Building, #122 Zhenhua RD., Futian, Shenzhen, China



THIS DRAWING IS UNPUBLISHED.

RELEASED FOR PUBLICATION

, 19

© COPYRIGHT 19

BY AMP INCORPORATED. ALL RIGHTS RESERVED.

LOC

DIST

REVISIONS

G

14

P

LTR

DESCRIPTION

DATE

DWN

APVD

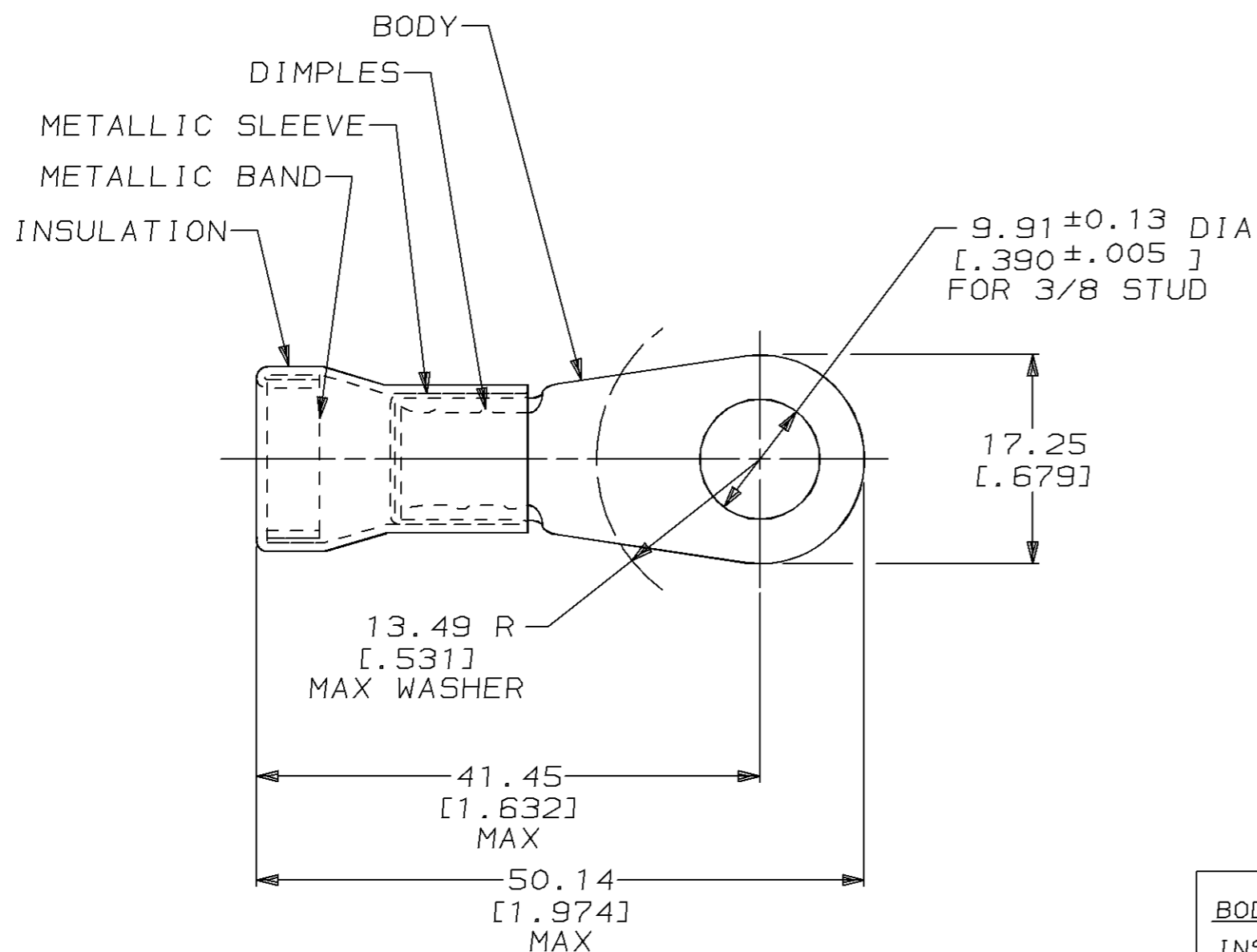
L

REVISED &amp; REDRAWN PER 0L20-0086-96

29OCT96

DKS

DMS



- 1 TIN PL 0.00254[.000100] MIN THK PER MIL-T-10727
- 2 SILVER PL 0.00508[.000200] MIN EXT THK PER QQ-S-365
- 3 GOLD PL 0.00127[.000050] MIN EXT THK PER MIL-G-45204 OVER NICKEL PL 0.00762[.000030] MIN EXT THK PER QQ-N-290
- 4 TAPE MOUNTED
- 5 WIRE INSULATION: 11.07[.436] MAX DIA
- 6 MATERIAL THK: 1.22 ± 0.08 [1.048 ± 0.003]

BODY: COPPER PER ASTM B-152 ANNEALEDINSULATION: PVC COLOR: YELLOWMETALLIC SLEEVE: COPPER PER ASTM B-152 ANNEALEDMETALLIC BAND: STEEL PER ASTM A-109

TIN PL 0.00254[.000100] MIN

THK PER MIL-T-10727

2-322011-5 1

2-322011-2 3  
OBSOLETE2-322011-1 2  
OBSOLETE

322011 1

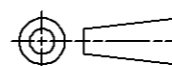
MATERIAL &amp; FINISH

AMP  
PART NUMBERAMP INCORPORATED  
CUSTOMER SERVICE SYSTEMSFOR ADDITIONAL PRODUCT  
INFORMATION OR COPIES  
OF DRAWINGS AND  
TECHNICAL DOCUMENTSPRODUCT INFORMATION CENTER  
1-800-522-6752RECOMMENDED OPERATING TEMPERATURE:  
105°C MAXVOLTAGE RATING:  
NOT APPLICABLEFOR APPLICATION  
TOOLING INFORMATIONTOOLING ASSISTANCE CENTER  
1-800-722-1111WIRE CROSS SECTIONAL AREA RANGE:  
16.8-26.7mm<sup>2</sup> [33,100-52,600] CIR MILS  
SOLID OR STRANDED

FOR ORDER ENTRY

1-800-526-5142

THIS DRAWING IS A CONTROLLED DOCUMENT.

DIMENSIONS:  
mm [INCHES]TOLERANCES UNLESS  
OTHERWISE SPECIFIED:0 PLC ±-  
1 PLC ±-  
2 PLC ±0.20[.008]  
3 PLC ±-  
4 PLC ±-  
ANGLES ±-

MATERIAL

SEE TABLE

FINISH

SEE TABLE

DWN

DK SCHRUM

28OCT96

CHK

DM SWARTZ

29OCT96

APVD

JL MECKLEY

29OCT96

PRODUCT SPEC

APPLICATION SPEC

WEIGHT

-

CUSTOMER DRAWING

**AMP**AMP Incorporated  
Harrisburg, PA 17105-3608

NAME

TERMINAL ASSEMBLY,  
RING TONGUE, AMPLI-BOND™,  
WIRE SIZE: 4 AWG

SIZE

CAGE CODE

DRAWING NO

A3

00779

C-322011

SCALE 2:1

SHEET

1 OF 1

REV L