



Chipsmall Limited consists of a professional team with an average of over 10 year of expertise in the distribution of electronic components. Based in Hongkong, we have already established firm and mutual-benefit business relationships with customers from,Europe,America and south Asia,supplying obsolete and hard-to-find components to meet their specific needs.

With the principle of “Quality Parts,Customers Priority,Honest Operation,and Considerate Service”,our business mainly focus on the distribution of electronic components. Line cards we deal with include Microchip,ALPS,ROHM,Xilinx,Pulse,ON,Everlight and Freescale. Main products comprise IC,Modules,Potentiometer,IC Socket,Relay,Connector.Our parts cover such applications as commercial,industrial, and automotives areas.

We are looking forward to setting up business relationship with you and hope to provide you with the best service and solution. Let us make a better world for our industry!



## Contact us

Tel: +86-755-8981 8866 Fax: +86-755-8427 6832

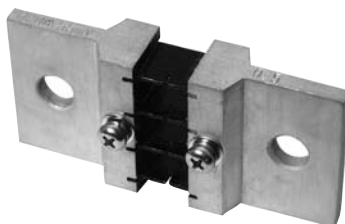
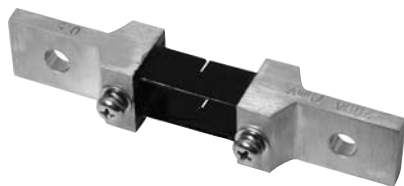
Email & Skype: [info@chipsmall.com](mailto:info@chipsmall.com) Web: [www.chipsmall.com](http://www.chipsmall.com)

Address: A1208, Overseas Decoration Building, #122 Zhenhua RD., Futian, Shenzhen, China



# S Series

## High Current Shunts



### FEATURES

- 100-1200A ratings
- 60mv and 75mv versions
- 0.5% accuracy class
- Manganin (6J13) plate resistive element construction
- T, L, and DIN type terminals
- H59-1 (UNS 37700) Brass Terminal Construction

### SERIES SPECIFICATIONS

Series	Terminal Type	Construction	Rated Current	Voltage (mV)	Accuracy Class
SHD1-100C060DE	DIN	Plate	100	60	0.50%
SHT1-250C060DE	T	Plate	250	60	0.50%
SHL1-600C060DE	L	Plate	600	60	0.50%
SHL1-1K2C060DE	L	Plate	1200	60	0.50%
SHD1-100C075DE	DIN	Plate	100	75	0.50%
SHT1-200C075DE	T	Plate	200	75	0.50%
SHT1-500C075DE	T	Plate	500	75	0.50%
SHL1-1K0C075DE	L	Plate	1000	75	0.50%
SHT1-500C100DE	T	Plate	500	100	0.50%

### CHARACTERISTICS

**Terminal Surface Coating** Acid Wash and Passivation

**Resistor plate surface coating** Acid Wash and Passivation

**Method of measurement** Null Balance Resistance Bridge

**National standard** GB/T7676-1998 (Direct acting indicating analog electrical measuring instruments and their accessories)

**Safety standard** IEC610101-1: 1890 (Safety requirements for electrical equipment for measurement, control, and laboratory use-Part I: General requirements)

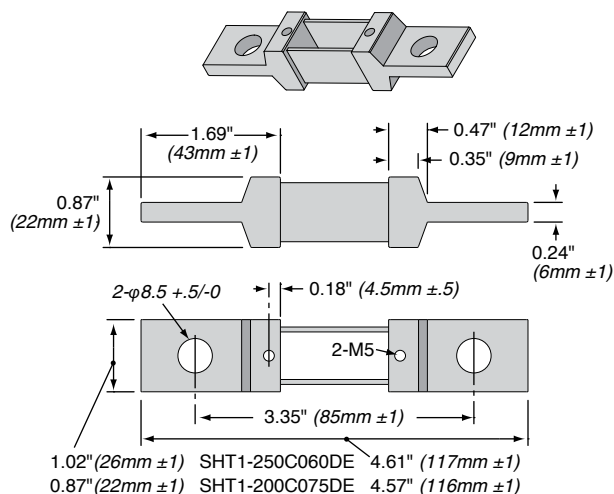
**Environmental standard** SJ/T11363-2006 (Requirements for concentration limits for certain hazardous substances in electronic information products)

**Derating** linearly from 25°C to 85°C

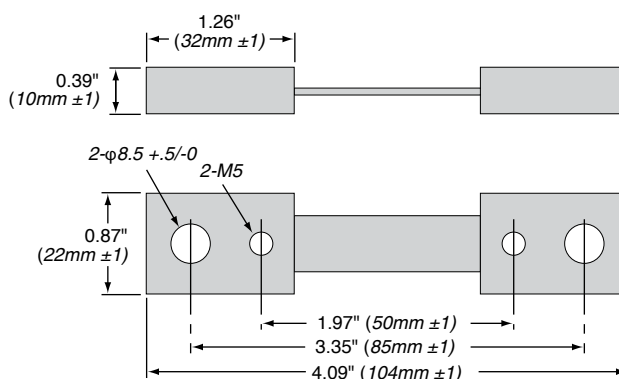
### DIMENSIONS

in./mm

SHT1-250C060DE  
SHT1-200C075DE



SHD1-100C060DE  
SHD1-100C075DE



(continued)

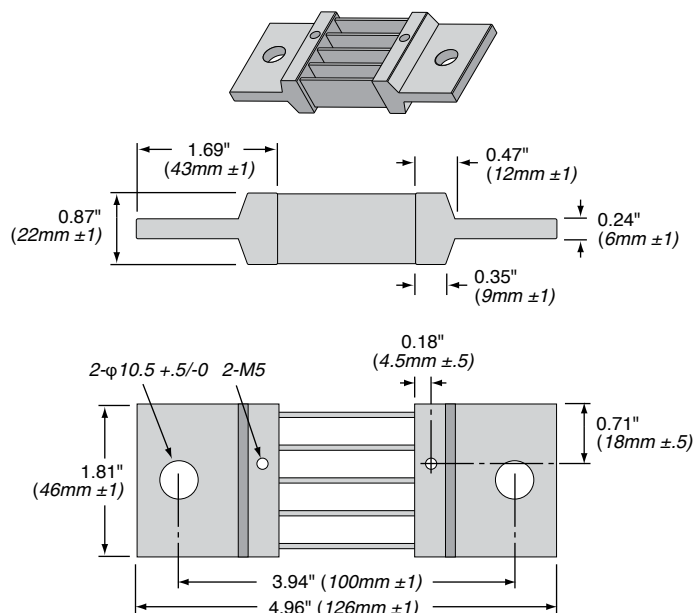
# S Series

## High Current Laboratory Shunts

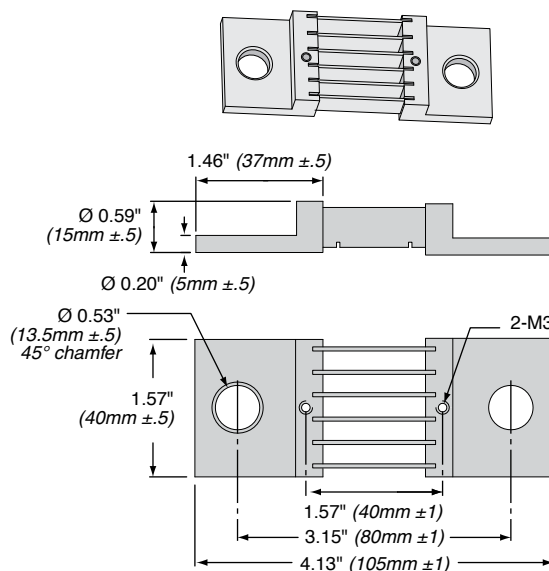
### DIMENSIONS

(continued) in./mm

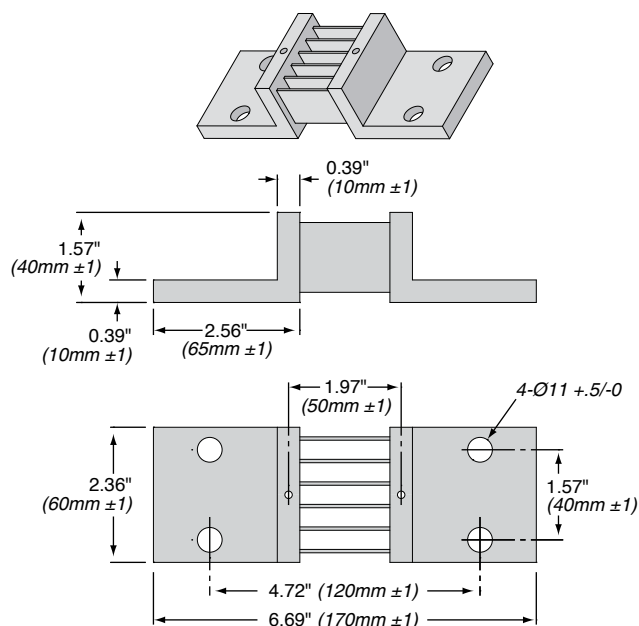
#### SHT1-500C075DE



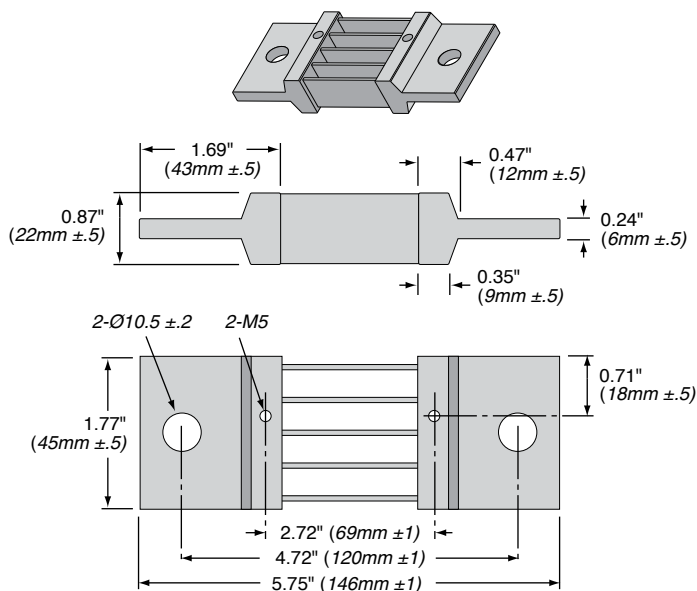
#### SHL1-600C060DE



#### SHL1-1K2C060DE SHL1-1K0C075DE



#### SHT1-500C100DE



### HOW TO ORDER

Current				
1K0 = 1000 amps				
500 = 500 amps				
200 = 200 amps				
100 = 100 amps				
RoHS Compliant				
SHL1-1K0C075DE				
Series	Terminal Type	Terminal Material	mV	Tolerance
T	T-type	C = copper surface treatment (std.)	075 = 75mV	D = ±0.5%
D	DIN-type	N = nickel plating	025 = 25mV	F = ±1%
L	L-type		050 = 50mV	
			060 = 60mV	