



Chipsmall Limited consists of a professional team with an average of over 10 year of expertise in the distribution of electronic components. Based in Hongkong, we have already established firm and mutual-benefit business relationships with customers from,Europe,America and south Asia,supplying obsolete and hard-to-find components to meet their specific needs.

With the principle of "Quality Parts,Customers Priority,Honest Operation,and Considerate Service",our business mainly focus on the distribution of electronic components. Line cards we deal with include Microchip,ALPS,ROHM,Xilinx,Pulse,ON,Everlight and Freescale. Main products comprise IC,Modules,Potentiometer,IC Socket,Relay,Connector.Our parts cover such applications as commercial,industrial, and automotives areas.

We are looking forward to setting up business relationship with you and hope to provide you with the best service and solution. Let us make a better world for our industry!



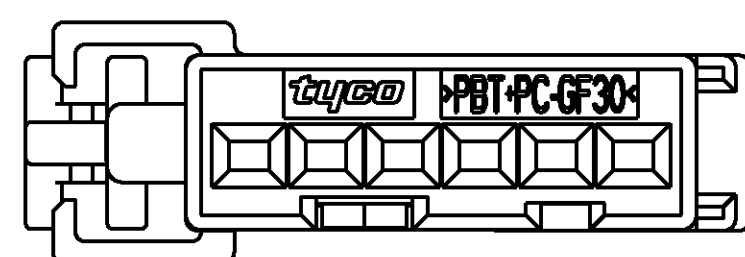
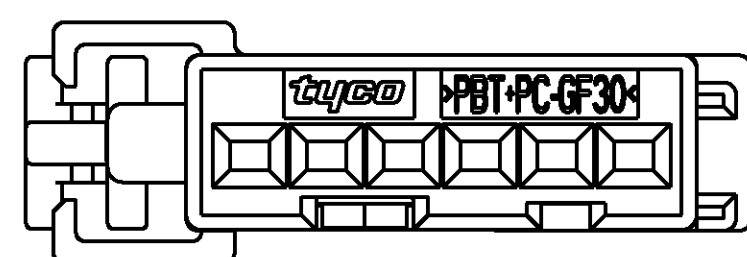
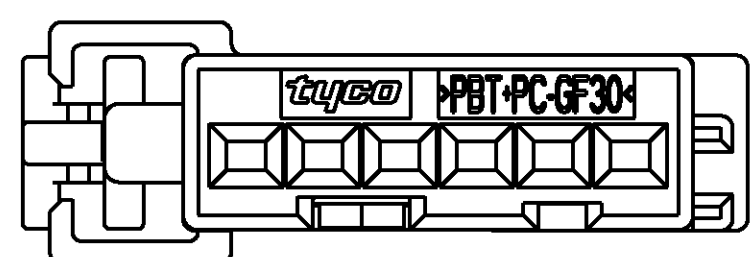
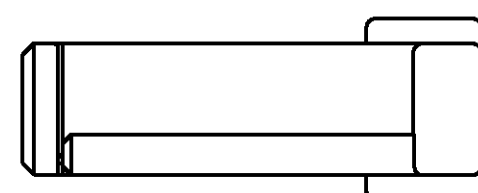
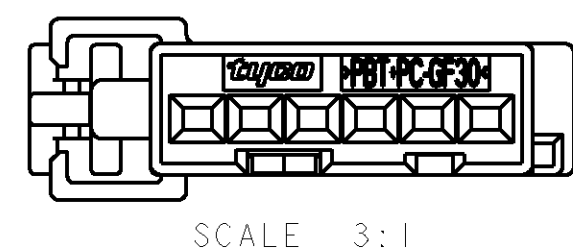
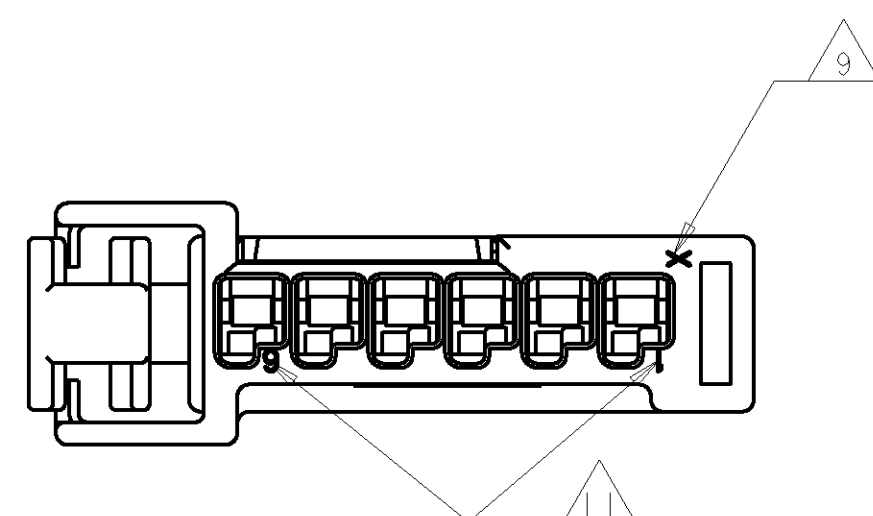
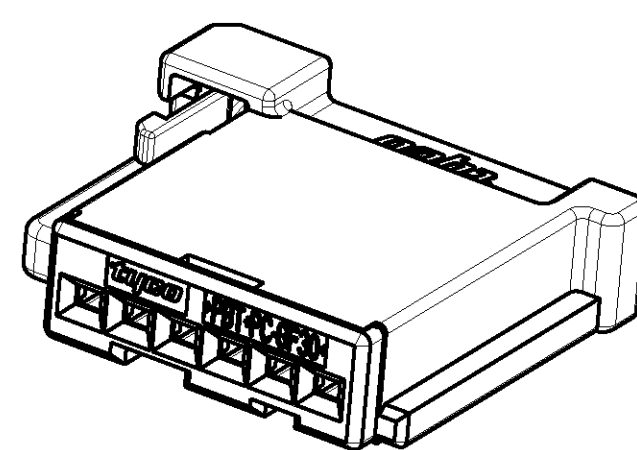
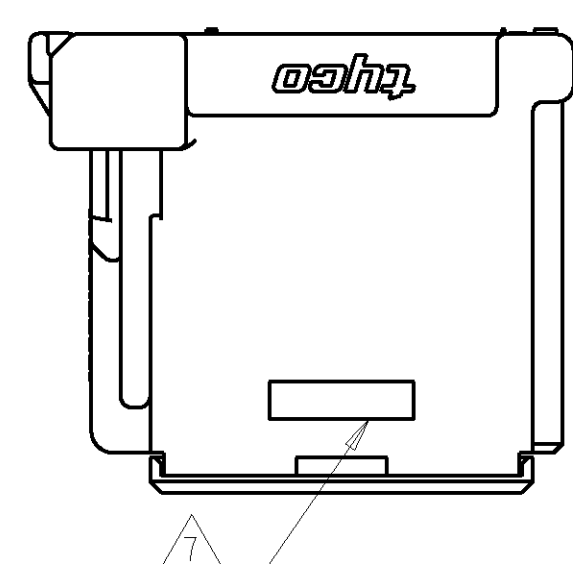
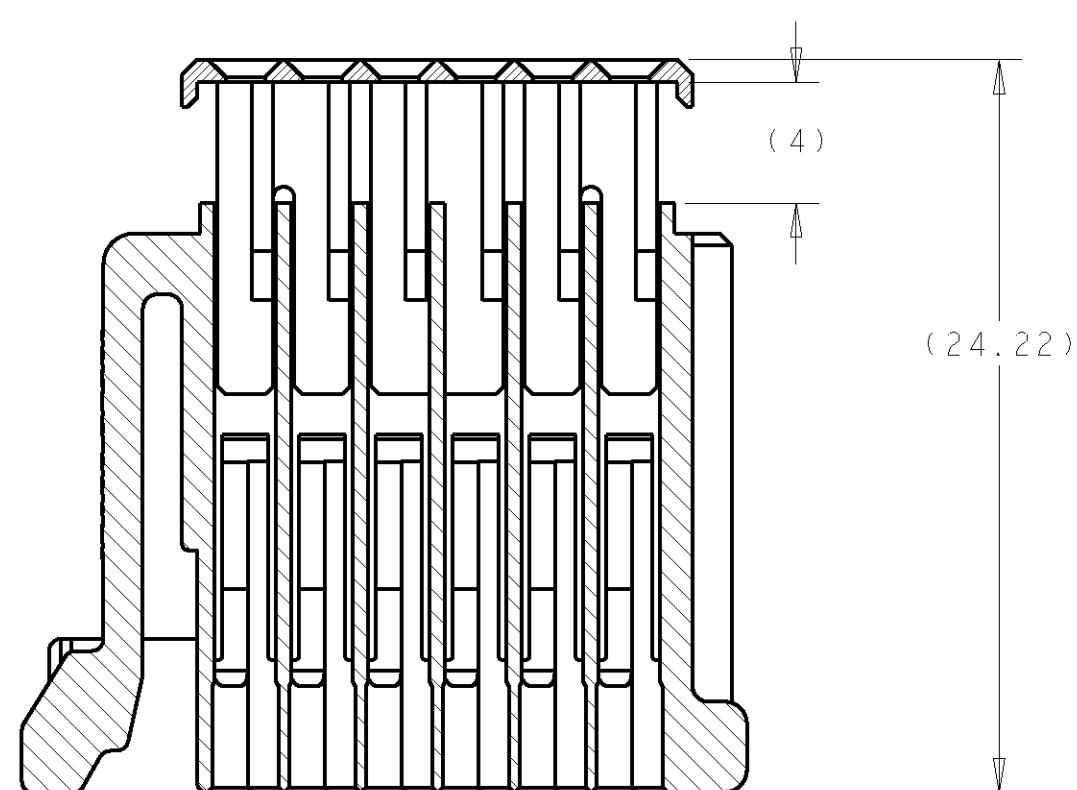
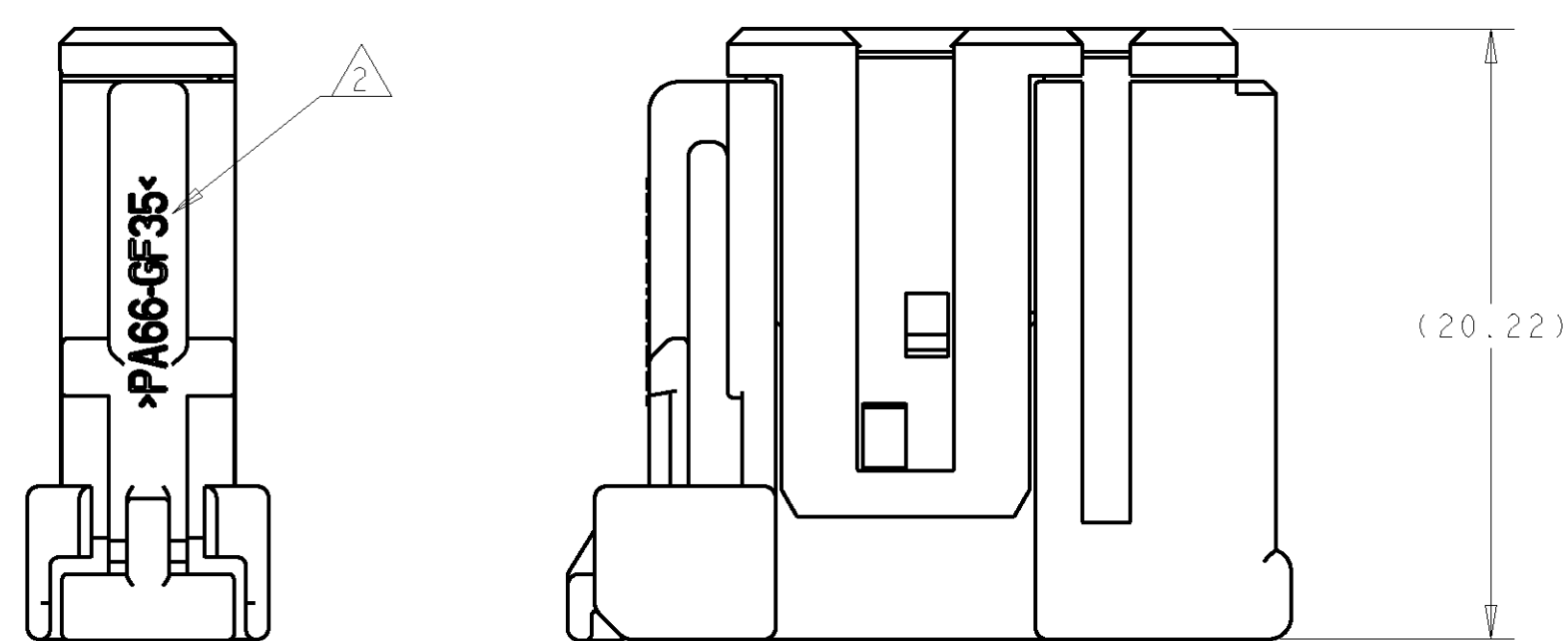
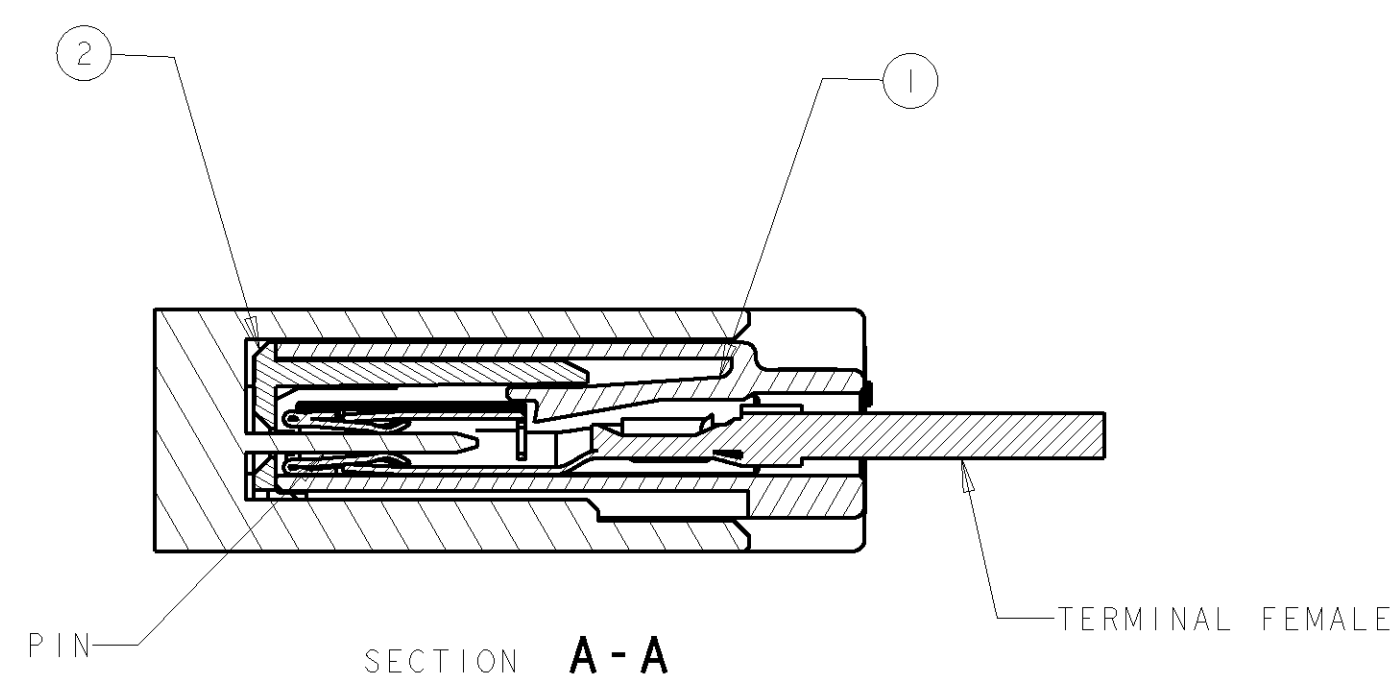
Contact us

Tel: +86-755-8981 8866 Fax: +86-755-8427 6832

Email & Skype: info@chipsmall.com Web: www.chipsmall.com

Address: A1208, Overseas Decoration Building, #122 Zhenhua RD., Futian, Shenzhen, China





| 438 | 56 - |

| 438 | 56 - 2

| 438 | 56 - 3

1 4 3 8 | 5 6 - 4

KEYING OPTION "A"

KEYING OPTION "B"

KEYING OPTION "C"

KEYING OPTION "D"

1. MAXIMUM INSERTION FORCE FULLY POPULATED WITH
TIN TERMINALS= 39(N)
GOLD TERMINALS= 27 (N)

 MATERIAL IDENTIFICATION SYMBOLS.

3. 0.2 mm MAXIMUM RADIUS PERMISSIBLE ON EDGES AND FILLETS SHOWN AS SHARP FOR PLASTIC PARTS.

4. N/A

5. N/A

6. N/A

7 PRODUCTION DATE CODE (YY-DDD-HH)& ASSEMBLY
PART NO. APPLIED IN APPROXIMATE LOCATION.

8. N/A

9 TOOL CAVITY #


 COMPANY LOGO

 TERMINAL CAVITY IDENTIFICATION NUMBER.

12. INTERFACE DRAWING IS AVAILABLE UPON REQUEST FROM ENGINEERING.

1438156-4	1438156-3	1438156-2	1438156-1	LIST OF PARTS					
				MAX. TEMP. (AMBIENT + RISE) 120° C (CLASS #2)					
				ITEM	COLOR	DESCRIPTION	TYCO PART NUMBER	RECYCLING CODE	WEIGHT (GRAM)
				2	RED	SPACER	1438155-1	>PBT+PC-GF30<	N/A
				1	BLACK	HARNESS-KEY D	1438154-4	>PA66-GF35<	
				1		HARNESS-KEY C	1438154-3		
				1		HARNESS-KEY B	1438154-2		
				1		HARNESS-KEY A	1438154-1		

APPLICABLE COMPONENTS					
DESCRIPTION	NOMINAL TERMINAL SIZE	COLOR	TYCO PART NUMBER	MATERIAL / SPECIFICATION NUMBER	APPLICABLE WIRE SIZES
TERMINAL FEMALE	0.64 (CAT. 0)	N/A	1393366-1	COPPER ALLOY/TIN PLATE	18-20AWG OR METRIC EQUIVALENT
TERMINAL FEMALE	0.64 (CAT. 0)	N/A	1393367-1	COPPER ALLOY/TIN PLATE	22-24AWG OR METRIC EQUIVALENT
TERMINAL FEMALE	0.64 (CAT. 0)	N/A	1393365-1	COPPER ALLOY/GOLD PLATE	18-20AWG OR METRIC EQUIVALENT
TERMINAL FEMALE	0.64 (CAT. 0)	N/A	1393364-1	COPPER ALLOY/GOLD PLATE	22-24AWG OR METRIC EQUIVALENT

THIS DRAWING IS A CONTROLLED DOCUMENT AND ITS RELEASE OR DISSEMINATION TO ANY OTHER PARTY WITHOUT THE AUTHORIZATION OF THE ISSUING ORGANIZATION SHOULD BE LIMITED TO THE LATEST EDITION.		DWN. M. HITCHCOCK 11JUL2002 CHK. A. SHUMAN 11JUL2002 APP'D. A. VALASEK 11JUL2002		Tyco Electronics Tyco Electronics Harrisburg, PA 17105-3608			
DIMENSIONS: mm 		TOLERANCES UNLESS OTHERWISE SPECIFIED: 0 PLC ± 1 PLC ± 2 PLC ± 3 PLC ± 4 PLC ± 5 PLC ± 6 PLC ± 7 PLC ± 8 PLC ± 9 PLC ± 10 PLC ± 11 PLC ± 12 PLC ± 13 PLC ± 14 PLC ± 15 PLC ± 16 PLC ± 17 PLC ± 18 PLC ± 19 PLC ± 20 PLC ± 21 PLC ± 22 PLC ± 23 PLC ± 24 PLC ± 25 PLC ± 26 PLC ± 27 PLC ± 28 PLC ± 29 PLC ± 30 PLC ± 31 PLC ± 32 PLC ± 33 PLC ± 34 PLC ± 35 PLC ± 36 PLC ± 37 PLC ± 38 PLC ± 39 PLC ± 40 PLC ± 41 PLC ± 42 PLC ± 43 PLC ± 44 PLC ± 45 PLC ± 46 PLC ± 47 PLC ± 48 PLC ± 49 PLC ± 50 PLC ± 51 PLC ± 52 PLC ± 53 PLC ± 54 PLC ± 55 PLC ± 56 PLC ± 57 PLC ± 58 PLC ± 59 PLC ± 60 PLC ± 61 PLC ± 62 PLC ± 63 PLC ± 64 PLC ± 65 PLC ± 66 PLC ± 67 PLC ± 68 PLC ± 69 PLC ± 70 PLC ± 71 PLC ± 72 PLC ± 73 PLC ± 74 PLC ± 75 PLC ± 76 PLC ± 77 PLC ± 78 PLC ± 79 PLC ± 80 PLC ± 81 PLC ± 82 PLC ± 83 PLC ± 84 PLC ± 85 PLC ± 86 PLC ± 87 PLC ± 88 PLC ± 89 PLC ± 90 PLC ± 91 PLC ± 92 PLC ± 93 PLC ± 94 PLC ± 95 PLC ± 96 PLC ± 97 PLC ± 98 PLC ± 99 PLC ± 100 PLC ± 101 PLC ± 102 PLC ± 103 PLC ± 104 PLC ± 105 PLC ± 106 PLC ± 107 PLC ± 108 PLC ± 109 PLC ± 110 PLC ± 111 PLC ± 112 PLC ± 113 PLC ± 114 PLC ± 115 PLC ± 116 PLC ± 117 PLC ± 118 PLC ± 119 PLC ± 120 PLC ± 121 PLC ± 122 PLC ± 123 PLC ± 124 PLC ± 125 PLC ± 126 PLC ± 127 PLC ± 128 PLC ± 129 PLC ± 130 PLC ± 131 PLC ± 132 PLC ± 133 PLC ± 134 PLC ± 135 PLC ± 136 PLC ± 137 PLC ± 138 PLC ± 139 PLC ± 140 PLC ± 141 PLC ± 142 PLC ± 143 PLC ± 144 PLC ± 145 PLC ± 146 PLC ± 147 PLC ± 148 PLC ± 149 PLC ± 150 PLC ± 151 PLC ± 152 PLC ± 153 PLC ± 154 PLC ± 155 PLC ± 156 PLC ± 157 PLC ± 158 PLC ± 159 PLC ± 160 PLC ± 161 PLC ± 162 PLC ± 163 PLC ± 164 PLC ± 165 PLC ± 166 PLC ± 167 PLC ± 168 PLC ± 169 PLC ± 170 PLC ± 171 PLC ± 172 PLC ± 173 PLC ± 174 PLC ± 175 PLC ± 176 PLC ± 177 PLC ± 178 PLC ± 179 PLC ± 180 PLC ± 181 PLC ± 182 PLC ± 183 PLC ± 184 PLC ± 185 PLC ± 186 PLC ± 187 PLC ± 188 PLC ± 189 PLC ± 190 PLC ± 191 PLC ± 192 PLC ± 193 PLC ± 194 PLC ± 195 PLC ± 196 PLC ± 197 PLC ± 198 PLC ± 199 PLC ± 200 PLC ± 201 PLC ± 202 PLC ± 203 PLC ± 204 PLC ± 205 PLC ± 206 PLC ± 207 PLC ± 208 PLC ± 209 PLC ± 210 PLC ± 211 PLC ± 212 PLC ± 213 PLC ± 214 PLC ± 215 PLC ± 216 PLC ± 217 PLC ± 218 PLC ± 219 PLC ± 220 PLC ± 221 PLC ± 222 PLC ± 223 PLC ± 224 PLC ± 225 PLC ± 226 PLC ± 227 PLC ± 228 PLC ± 229 PLC ± 230 PLC ± 231 PLC ± 232 PLC ± 233 PLC ± 234 PLC ± 235 PLC ± 236 PLC ± 237 PLC ± 238 PLC ± 239 PLC ± 240 PLC ± 241 PLC ± 242 PLC ± 243 PLC ± 244 PLC ± 245 PLC ± 246 PLC ± 247 PLC ± 248 PLC ± 249 PLC ± 250 PLC ± 251 PLC ± 252 PLC ± 253 PLC ± 254 PLC ± 255 PLC ± 256 PLC ± 257 PLC ± 258 PLC ± 259 PLC ± 260 PLC ± 261 PLC ± 262 PLC ± 263 PLC ± 264 PLC ± 265 PLC ± 266 PLC ± 267 PLC ± 268 PLC ± 269 PLC ± 270 PLC ± 271 PLC ± 272 PLC ± 273 PLC ± 274 PLC ± 275 PLC ± 276 PLC ± 277 PLC ± 278 PLC ± 279 PLC ± 280 PLC ± 281 PLC ± 282 PLC ± 283 PLC ± 284 PLC ± 285 PLC ± 286 PLC ± 287 PLC ± 288 PLC ± 289 PLC ± 290 PLC ± 291 PLC ± 292 PLC ± 293 PLC ± 294 PLC ± 295 PLC ± 296 PLC ± 297 PLC ± 298 PLC ± 299 PLC ± 300 PLC ± 301 PLC ± 302 PLC ± 303 PLC ± 304 PLC ± 305 PLC ± 306 PLC ± 307 PLC ± 308 PLC ± 309 PLC ± 310 PLC ± 311 PLC ± 312 PLC ± 313 PLC ± 314 PLC ± 315 PLC ± 316 PLC ± 317 PLC ± 318 PLC ± 319 PLC ± 320 PLC ± 321 PLC ± 322 PLC ± 323 PLC ± 324 PLC ± 325 PLC ± 326 PLC ± 327 PLC ± 328 PLC ± 329 PLC ± 330 PLC ± 331 PLC ± 332 PLC ± 333 PLC ± 334 PLC ± 335 PLC ± 336 PLC ± 337 PLC ± 338 PLC ± 339 PLC ± 340 PLC ± 341 PLC ± 342 PLC ± 343 PLC ± 344 PLC ± 345 PLC ± 346 PLC ± 347 PLC ± 348 PLC ± 349 PLC ± 350 PLC ± 351 PLC ± 352 PLC ± 353 PLC ± 354 PLC ±		NAME 1X6 UNSEALED LOW PROFILE, HARNESS, PLUG ASSEMBLY		SIZE CASE CODE DRAWING NO A I 00779 C 1438156	
MATERIAL - FINISH -		WEIGHT -		RESTRICTED TO -			
		CUSTOMER DRAWING		SCALE 4:1 SHEET 1 OF 1 REV A			