



Chipsmall Limited consists of a professional team with an average of over 10 year of expertise in the distribution of electronic components. Based in Hongkong, we have already established firm and mutual-benefit business relationships with customers from,Europe,America and south Asia,supplying obsolete and hard-to-find components to meet their specific needs.

With the principle of “Quality Parts,Customers Priority,Honest Operation,and Considerate Service”,our business mainly focus on the distribution of electronic components. Line cards we deal with include Microchip,ALPS,ROHM,Xilinx,Pulse,ON,Everlight and Freescale. Main products comprise IC,Modules,Potentiometer,IC Socket,Relay,Connector.Our parts cover such applications as commercial,industrial, and automotives areas.

We are looking forward to setting up business relationship with you and hope to provide you with the best service and solution. Let us make a better world for our industry!



Contact us

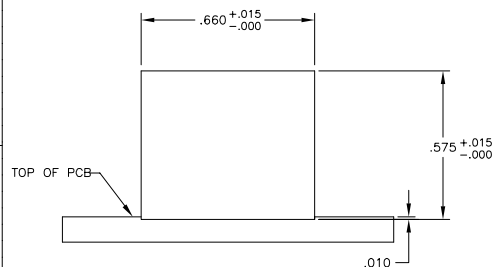
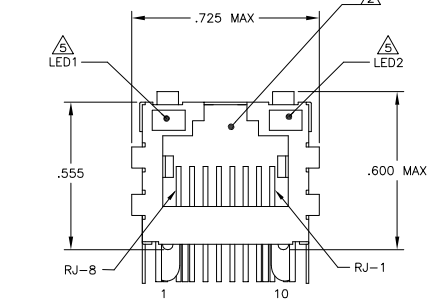
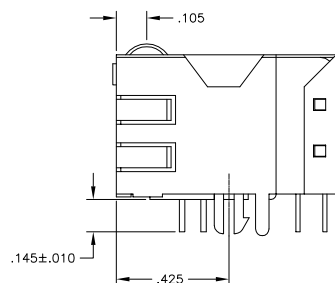
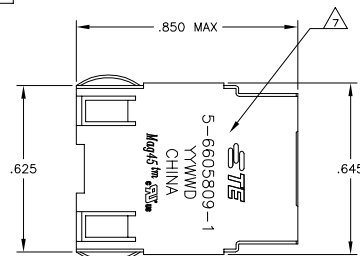
Tel: +86-755-8981 8866 Fax: +86-755-8427 6832

Email & Skype: info@chipsmall.com Web: www.chipsmall.com

Address: A1208, Overseas Decoration Building, #122 Zhenhua RD., Futian, Shenzhen, China

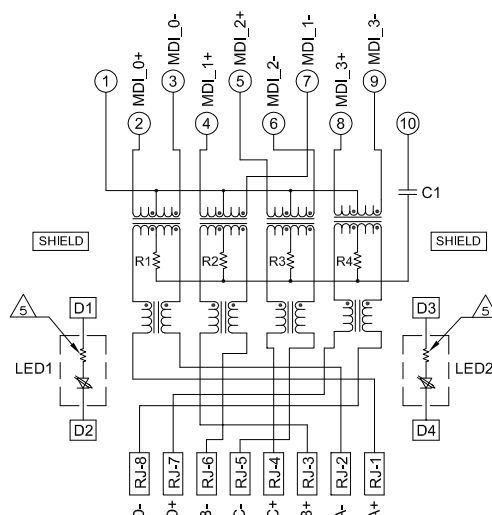


MECHANICAL:

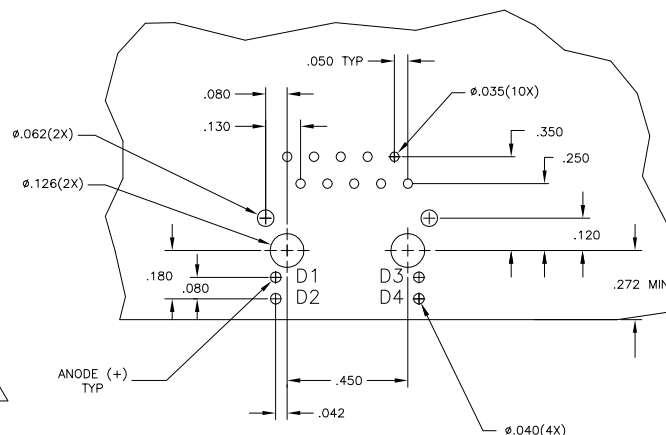
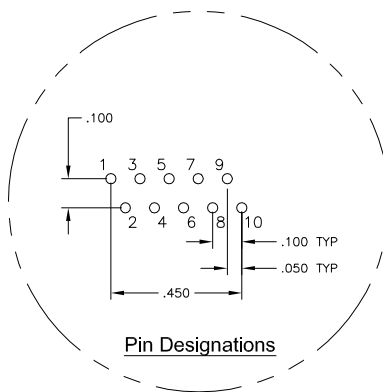


7G01 GIGABIT MAGNETIC CIRCUIT

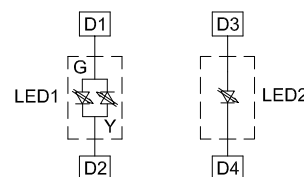
Suggested Panel Cutout



C1=1000pF, 2kV CAPACITOR
R1-R4 = 75 OHMS, 1/16 W RESISTORS



Suggested PCB Layout
(Component Side)



LED CONFIGURATION
FOR 5-6605809-5 ONLY

LOC	DIST	REVISIONS	DATE	BY	APP
AA	22				
B2	REVISED PER ECO-11-005140	25MAR11	RK	HMR	
C	ECO-11-015766	30MAY2011	EL	LR	

- MATERIALS:
- HOUSING - THERMOPLASTIC PET POLYESTER FLAMMABILITY RATING UL 94V-0.
 - SHIELD - .010" THICK, C26800 BRASS PREPLATED WITH 30μINCH MIN SEMI-BRIGHT NICKEL, SOLDER TABS POST DIPPED WITH 100μINCH MIN SAC SOLDER.
 - MOD JACK CONTACTS - 0.0157" x 0.018" PHOSPHOR BRONZE, 50μINCH MIN OVERALL NICKEL UNDERPLATE, WITH SELECT 50μINCH MIN HARD GOLD FINISH PLATE.
 - SOLDERTAILS WITH 100μINCH MIN MATT TIN AND/OR SAC SOLDER DIP.
 - LIGHT EMITTING DIODE(LED) - DIFFUSED EPOXY LENS, .020" x .020" CARBON STEEL WIREFRAME LEADS PRE-PLATED WITH 80μINCH SILVER OVER 40μINCH NICKEL UNDERPLATE OVER 40μINCH COPPER UNDERPLATE, POST-PLATED WITH 100μINCH MIN MATT TIN AND/OR SAC SOLDER DIP OR PURE TIN SOLDER DIP.

RJ45 JACK CAVITY CONFORMS TO FCC RULES AND REGULATIONS PART 68, SUB PART F.

- MAGNETICS
- IMPEDANCE: 100 OHMS
 - TURNS RATIO (CHIP- CABLE): 1:1 ALL FOUR PAIRS
 - OPEN CIRCUIT INDUCTANCE (OCL): 350μH MIN @100kHz, 0.1VRMS, 8mADC BIAS FROM 0°C TO 70°C, ALL FOUR PAIRS
 - ALL FOUR PAIRS BI-DIRECTIONAL
 - PERFORMANCE @ 25°C:
 - INSERTION LOSS (IL): 1.1dB MAX FROM 0.5MHz TO 100MHz
 - RETURN LOSS (RL): 18dB MIN FROM 0.5MHz TO 40MHz
 - 12-20LOG(f/80)dB MIN FROM 4.01MHz TO 100MHz
 - CROSSTALK ATTENUATION: 35dB MIN FROM 0.5MHz TO 40MHz
 - 33-20xLOG(f/50)dB MIN FROM 4.01MHz TO 100MHz
 - COMMON MODE REJECTION RATIO (CMRR): 30dB MIN FROM 0.5MHz TO 100MHz
 - ISOLATION VOLTAGE: 2250VDC (MAX) FOR 60 SECONDS WITH A RISE TIME OF 500V/SEC.

4. OPERATING TEMPERATURE: FROM 0°C - +70°C.

- THE 250 OHM LED RESISTORS ARE OPTIONAL, PLEASE SEE CHART FOR PRESENCE OR ABSENCE OF LED RESISTORS. IF THE LED WITHOUT 250 OHM RESISTORS, LED IS DRIVEN WITH CONSTANT CURRENT AT APPROX 20mA.
- LED COLOR: DOMINANT WAVELENGTH (AD): GREEN 568 nm TYP @ IF=20mA
FORWARD VOLTAGE (VF): GREEN 2.2V TYP @ IF=20mA
DOMINANT WAVELENGTH (AD): YELLOW 588 nm TYP @ IF=20mA
FORWARD VOLTAGE (VF): YELLOW 2.1V TYP @ IF=20mA
- IF THE LED WITH 250 OHM RESISTORS, LED IS DRIVEN WITH 5V VOLTAGE AND THE MAX OPERATING CURRENT IS 20mA.
- LED COLOR : DOMINANT WAVELENGTH (AD): GREEN 568 nm TYP @ VF=5V
FORWARD CURRENT (IF): GREEN 12 mA TYP @ VF=5V
DOMINANT WAVELENGTH (AD): YELLOW 588 nm TYP @ VF=5V
FORWARD CURRENT (IF): YELLOW 13 mA TYP @ VF=5V

THE MAGNETICS ARE SYMMETRICAL, AND THEREFORE ARE AUTO-MDI/MDIX CAPABLE.

TE CONNECTIVITY LOGO, TE CONNECTIVITY PART NUMBER, DATE CODE, COUNTRY OF ORIGIN AND AGENCY APPROVAL MARKING IN APPROXIMATE LOCATION SHOWN.

8. THESE PARTS ARE RECOMMENDED FOR WAVE SOLDERING PROCESS, PREHEAT TEMPERATURE IS 120°C TO 160°C, 120 SECONDS TO 180 SECONDS, PEAK SOLDERING TEMPERATURE IS 260 °C MAX, 10 SECONDS MAX.

9. OBSOLETE PARTS: OBSOLETE CIS STREAMLINING PER D.RENAUD/D.SINISI

GREEN	YES	GREEN	YES	6-6605809-1
YELLOW	NO	GREEN	NO	5-6605809-9
GREEN/YELLOW	NO	GREEN	NO	5-6605809-7
YELLOW	YES	GREEN	YES	5-6605809-2
GREEN	YES	YELLOW	YES	5-6605809-1
LED1	250 OHMS RESISTOR	LED2	250 OHMS RESISTOR	PART NUMBER

THIS DRAWING IS A CONTROLLED DOCUMENT.

DIMENSIONS: INCHES

0 P.L.C. ± .010

1 P.L.C. ± .010

2 P.L.C. ± .010

3 P.L.C. ± .010

4 P.L.C. ± .010

5 P.L.C. ± .010

6 P.L.C. ± .010

7 P.L.C. ± .010

8 P.L.C. ± .010

9 P.L.C. ± .010

10 P.L.C. ± .010

11 P.L.C. ± .010

12 P.L.C. ± .010

13 P.L.C. ± .010

14 P.L.C. ± .010

15 P.L.C. ± .010

16 P.L.C. ± .010

17 P.L.C. ± .010

18 P.L.C. ± .010

19 P.L.C. ± .010

20 P.L.C. ± .010

21 P.L.C. ± .010

22 P.L.C. ± .010

23 P.L.C. ± .010

24 P.L.C. ± .010

25 P.L.C. ± .010

26 P.L.C. ± .010

27 P.L.C. ± .010

28 P.L.C. ± .010

29 P.L.C. ± .010

30 P.L.C. ± .010

31 P.L.C. ± .010

32 P.L.C. ± .010

33 P.L.C. ± .010

34 P.L.C. ± .010

35 P.L.C. ± .010

36 P.L.C. ± .010

37 P.L.C. ± .010

38 P.L.C. ± .010

39 P.L.C. ± .010

40 P.L.C. ± .010

41 P.L.C. ± .010

42 P.L.C. ± .010

43 P.L.C. ± .010

44 P.L.C. ± .010

45 P.L.C. ± .010

46 P.L.C. ± .010

47 P.L.C. ± .010

48 P.L.C. ± .010

49 P.L.C. ± .010

50 P.L.C. ± .010

51 P.L.C. ± .010

52 P.L.C. ± .010

53 P.L.C. ± .010

54 P.L.C. ± .010

55 P.L.C. ± .010

56 P.L.C. ± .010

57 P.L.C. ± .010

58 P.L.C. ± .010

59 P.L.C. ± .010

60 P.L.C. ± .010

61 P.L.C. ± .010

62 P.L.C. ± .010

63 P.L.C. ± .010

64 P.L.C. ± .010

65 P.L.C. ± .010

66 P.L.C. ± .010

67 P.L.C. ± .010

68 P.L.C. ± .010

69 P.L.C. ± .010

70 P.L.C. ± .010

71 P.L.C. ± .010

72 P.L.C. ± .010

73 P.L.C. ± .010

74 P.L.C. ± .010

75 P.L.C. ± .010

76 P.L.C. ± .010

77 P.L.C. ± .010

78 P.L.C. ± .010

79 P.L.C. ± .010

80 P.L.C. ± .010

81 P.L.C. ± .010

82 P.L.C. ± .010

83 P.L.C. ± .010

84 P.L.C. ± .010

85 P.L.C. ± .010

86 P.L.C. ± .010

87 P.L.C. ± .010

88 P.L.C. ± .010

89 P.L.C. ± .010

90 P.L.C. ± .010

91 P.L.C. ± .010

92 P.L.C. ± .010

93 P.L.C. ± .010

94 P.L.C. ± .010

95 P.L.C. ± .010

96 P.L.C. ± .010

97 P.L.C. ± .010

98 P.L.C. ± .010

99 P.L.C. ± .010

100 P.L.C. ± .010

101 P.L.C. ± .010

102 P.L.C. ± .010

103 P.L.C. ± .010

104 P.L.C. ± .010

105 P.L.C. ± .010

106 P.L.C. ± .010

107 P.L.C. ± .010

108 P.L.C. ± .010

109 P.L.C. ± .010

110 P.L.C. ± .010

111 P.L.C. ± .010

112 P.L.C. ± .010

113 P.L.C. ± .010

114 P.L.C. ± .010

115 P.L.C. ± .010

116 P.L.C. ± .010

117 P.L.C. ± .010

118 P.L.C. ± .010

119 P.L.C. ± .010

120 P.L.C. ± .010

121 P.L.C. ± .010

122 P.L.C. ± .010

123 P.L.C. ± .010

124 P.L.C. ± .010

125 P.L.C. ± .010

126 P.L.C. ± .010

127 P.L.C. ± .010

128 P.L.C. ± .010

129 P.L.C. ± .010

130 P.L.C. ± .010

131 P.L.C. ± .010

132 P.L.C. ± .010

133 P.L.C. ± .010

134 P.L.C. ± .010

135 P.L.C. ± .010

136 P.L.C. ± .010

137 P.L.C. ± .010

138 P.L.C. ± .010

139 P.L.C. ± .010

140 P.L.C. ± .010

141 P.L.C. ± .010

142 P.L.C. ± .010

143 P.L.C. ± .010

144 P.L.C. ± .010

145 P.L.C. ± .010

146 P.L.C. ± .010

147 P.L.C. ± .010

148 P.L.C. ± .010

149 P.L.C. ± .010

150 P.L.C. ± .010

151 P.L.C. ± .010

152 P.L.C. ± .010

153 P.L.C. ± .010

154 P.L.C. ± .010

155 P.L.C. ± .010

156 P.L.C. ± .010

157 P.L.C. ± .010

158 P.L.C. ± .010

159 P.L.C. ± .010

160 P.L.C. ± .010

161 P.L.C. ± .010

162 P.L.C. ± .010

163 P.L.C. ± .010

164 P.L.C. ± .010

165 P.L.C. ± .010

166 P.L.C. ± .010

167 P.L.C. ± .010

168 P.L.C. ± .010

169 P.L.C. ± .010

170 P.L.C. ± .010

171 P.L.C. ± .010

172 P.L.C. ± .010

173 P.L.C. ± .010

174 P.L.C. ± .010

175 P.L.C. ± .010

176 P.L.C. ± .010

177 P.L.C. ± .010

178 P.L.C. ± .010

179 P.L.C. ± .010

180 P.L.C. ± .010

181 P.L.C. ± .010

182 P.L.C. ± .010

183 P.L.C. ± .010

184 P.L.C. ± .010

185 P.L.C. ± .010

186 P.L.C. ± .010

187 P.L.C. ± .010

188 P.L.C. ± .010

189 P.L.C. ± .010

190 P.L.C. ± .010

191 P.L.C. ± .010

192 P.L.C. ± .010

193 P.L.C. ± .010

194 P.L.C. ± .010

195 P.L.C. ± .010

196 P.L.C. ± .010

197 P.L.C. ± .010

198 P.L.C. ± .010

199 P.L.C. ± .010

200 P.L.C. ± .010

201 P.L.C. ± .010

202 P.L.C. ± .010

203 P.L.C. ± .010

204 P.L.C. ± .010

205 P.L.C. ± .010

206 P.L.C. ± .010

207 P.L.C. ± .010

208 P.L.C. ± .010

209 P.L.C. ± .010

210 P.L.C. ± .010

211 P.L.C. ± .010

212 P.L.C. ± .010

213 P.L.C. ± .010

214 P.L.C. ± .010

215 P.L.C. ± .010

216 P.L.C. ± .010

217 P.L.C. ± .010

218 P.L.C. ± .010

219 P.L.C. ± .010

220 P.L.C. ± .010

221 P.L.C. ± .010

222 P.L.C. ± .010

223 P.L.C. ± .010

224 P.L.C. ± .010

225 P.L.C. ± .010

226 P.L.C. ± .010

227 P.L.C. ± .010

228 P.L.C. ± .010

229 P.L.C. ± .010

230 P.L.C. ± .010

231 P.L.C. ± .010

232 P.L.C. ± .010

233 P.L.C. ± .010

234 P.L.C. ± .010

235 P.L.C. ± .010

236 P.L.C. ± .010

237 P.L.C. ± .010

238 P.L.C. ± .010

239 P.L.C. ± .010

240 P.L.C. ± .010

241 P.L.C. ± .010

242 P.L.C. ± .010

243 P.L.C. ± .010

244 P.L.C. ± .010

245 P.L.C. ± .010

246 P.L.C. ± .010

247 P.L.C. ± .010

248 P.L.C. ± .010

249 P.L.C. ± .010

250 P.L.C. ± .010

251 P.L.C. ± .010

252 P.L.C. ± .010

253 P.L.C. ± .010

254 P.L.C. ± .010

255 P.L.C. ± .010

256 P.L.C. ± .010

257 P.L.C. ± .010

258 P.L.C. ± .010

259 P.L.C. ± .010

260 P.L.C. ± .010

261 P.L.C. ± .010

262 P.L.C. ± .010

263 P.L.C. ± .010

264 P.L.C. ± .010

265 P.L.C. ± .010

266 P.L.C. ± .010

267 P.L.C. ± .010

268 P.L.C. ± .010

269 P.L.C. ± .010

270 P.L.C. ± .010

271 P.L.C. ± .010

272 P.L.C. ± .010

273 P.L.C. ± .010

274 P.L.C. ± .010

275 P.L.C. ± .010

276 P.L.C. ± .010

277 P.L.C. ± .010

278 P.L.C. ± .010

279 P.L.C. ± .010

280 P.L.C. ± .010

281 P.L.C. ± .010

282 P.L.C. ± .010

283 P.L.C. ± .010

284 P.L.C. ± .010

285 P.L.C. ± .010

286 P.L.C. ± .010

287 P.L.C. ± .010

288 P.L.C. ± .010

289 P.L.C. ± .010

290 P.L.C. ± .010

291 P.L.C. ± .010

292 P.L.C. ± .010

293 P.L.C. ± .010

294 P.L.C. ± .010

295 P.L.C. ± .010

296 P.L.C. ± .010

297 P.L.C. ± .010

298 P.L.C. ± .010

299 P.L.C. ± .010

300 P.L.C. ± .010

301 P.L.C. ± .010

302 P.L.C. ± .010

303 P.L.C. ± .010

304 P.L.C. ± .010

305 P.L.C. ± .010

306 P.L.C. ± .010

307 P.L.C. ± .010

308 P.L.C. ± .010

309 P.L.C. ± .010

310 P.L.C. ± .010

311 P.L.C. ± .010

312 P.L.C. ± .010

313 P.L.C. ± .010

314 P.L.C. ± .010

315 P.L.C. ± .010

316 P.L.C. ± .010

317 P.L.C. ± .010

318 P.L.C. ± .010

319 P.L.C. ± .010

320 P.L.C. ± .010

321 P.L.C. ± .010

322 P.L.C. ± .010

323 P.L.C. ± .010

324 P.L.C. ± .010

325 P.L.C. ± .010

326 P.L.C. ± .010

327 P.L.C. ± .010

328 P.L.C. ± .010

329 P.L.C. ± .010

330 P.L.C. ± .010

331 P.L.C. ± .010

332 P.L.C. ± .010

333 P.L.C. ± .010

334 P.L.C. ± .010

335 P.L.C. ± .010

336 P.L.C. ± .010

337 P.L.C. ± .010

338 P.L.C. ± .010

339 P.L.C. ± .010

340 P.L.C. ± .010

341 P.L.C. ± .010

342 P.L.C. ± .010

343 P.L.C. ± .010

344 P.L.C. ± .010

345 P.L.C. ± .010

346 P.L.C. ± .010

347 P.L.C. ± .010

348 P.L.C. ± .010

349 P.L.C. ± .010

350 P.L.C. ± .010

351 P.L.C. ± .010

352 P.L.C. ± .010

353 P.L.C. ± .010

354 P.L.C. ± .010

355 P.L.C. ± .010

356 P.L.C. ± .010

357 P.L.C. ± .010

358 P.L.C. ± .010

359 P.L.C. ± .010

360 P.L.C. ± .010

361 P.L.C. ± .010

362 P.L.C. ± .010

363 P.L.C. ± .010

364 P.L.C. ± .010

365 P.L.C. ± .010

366 P.L.C. ± .010

367 P.L.C. ± .010

368 P.L.C. ± .010

369 P.L.C. ± .010

370 P.L.C. ± .010

371 P.L.C. ± .010

372 P.L.C. ± .010

373 P.L.C. ± .010

374 P.L.C. ± .010

375 P.L.C. ± .010

376 P.L.C. ± .010

377 P.L.C. ± .010

378 P.L.C. ± .010

379 P.L.C. ± .010

380 P.L.C. ± .010

381 P.L.C. ± .010

382 P.L.C. ± .010

383 P.L.C. ± .010

384 P.L.C. ± .010

385 P.L.C. ± .010

386 P.L.C. ± .010

387 P.L.C. ± .010

388 P.L.C. ± .010

389 P.L.C. ± .010

390 P.L.C. ± .010

391 P.L.C. ± .010

392 P.L.C. ± .010

393 P.L.C. ± .010

394 P.L.C. ± .010

395 P.L.C. ± .010

396 P.L.C. ± .010

397 P.L.C. ± .010

398 P.L.C. ± .010

399 P.L.C. ± .010

400 P.L.C. ± .010

401 P.L.C. ± .010

402 P.L.C. ± .010

403 P.L.C. ± .010

404 P.L.C. ± .010

405 P.L.C. ± .010

406 P.L.C. ± .010

407 P.L.C. ± .010

408 P.L.C. ± .010

409 P.L.C. ± .010

410 P.L.C. ± .010

411 P.L.C. ± .010

412 P.L.C. ± .010

413 P.L.C. ± .010

414 P.L.C. ± .010

415 P.L.C. ± .010

416 P.L.C. ± .010

417 P.L.C. ± .010

418 P.L.C. ± .010

419 P.L.C. ± .010

420 P.L.C. ± .010

421 P.L.C. ± .010

422 P.L.C. ± .010

423 P.L.C. ± .010

424 P.L.C. ± .010

425 P.L.C. ± .010

426 P.L.C. ± .010

427 P.L.C. ± .010

428 P.L.C. ± .010

429 P.L.C. ± .010

430 P.L.C. ± .010

431 P.L.C. ± .010

432 P.L.C. ± .010

433 P.L.C. ± .010

434 P.L.C. ± .010

435 P.L.C. ± .010

436 P.L.C. ± .010

437 P.L.C. ± .010

438 P.L.C. ± .010

439 P.L.C. ± .010

440 P.L.C. ± .010

441 P.L.C. ± .010

442 P.L.C. ± .010

443 P.L.C. ± .010

444 P.L.C. ± .010

445 P.L.C. ± .010

446 P.L.C. ± .010

447 P.L.C. ± .010

448 P.L.C. ± .010

449 P.L.C. ± .010

450 P.L.C. ± .010

451 P.L.C. ± .010

452 P.L.C. ± .010

453 P.L.C. ± .010

454 P.L.C. ± .010

455 P.L.C. ± .010

456 P.L.C. ± .010

457 P.L.C. ± .010

458 P.L.C. ± .010

459 P.L.C. ± .010

460 P.L.C. ± .010

461 P.L.C. ± .010

462 P.L.C. ± .010

463 P.L.C. ± .010

464 P.L.C. ± .010

465 P.L.C. ± .010

466 P.L.C. ± .010

467 P.L.C. ± .010

468 P.L.C. ± .010

469 P.L.C. ± .010

470 P.L.C. ± .010

471 P.L.C. ± .010

472 P.L.C. ± .010

473 P.L.C. ± .010

474 P.L.C. ± .010

475 P.L.C. ± .010

476 P.L.C. ± .010

477 P.L.C. ± .010

478 P.L.C. ± .010

479 P.L.C. ± .010

480 P.L.C. ± .010

481 P.L.C. ± .010

482 P.L.C. ± .010

483 P.L.C. ± .010

484 P.L.C. ± .010

485 P.L.C. ± .010

486 P.L.C. ± .010

487 P.L.C. ± .010

488 P.L.C. ± .010

489 P.L.C. ± .010

490 P.L.C. ± .010

491 P.L.C. ± .010

492 P.L.C. ± .010

493 P.L.C. ± .010

494 P.L.C. ± .010

495 P.L.C. ± .010

496 P.L.C. ± .010

497 P.L.C. ± .010

498 P.L.C. ± .010

499 P.L.C. ± .010

500 P.L.C. ± .010

501 P.L.C. ± .010

502 P.L.C. ± .010

503 P.L.C. ± .010

504 P.L.C. ± .010

505 P.L.C. ± .010

506 P.L.C. ± .010

507 P.L.C. ± .010

508 P.L.C. ± .010

509 P.L.C. ± .010

510 P.L.C. ± .010

511 P.L.C. ± .010

512 P.L.C. ± .010

513 P.L.C. ± .010

514 P.L.C. ± .010

515 P.L.C. ± .010

516 P.L.C. ± .010

517 P.L.C. ± .010

518 P.L.C. ± .010

519 P.L.C. ± .010

520 P.L.C. ± .010

521 P.L.C. ± .010

522 P.L.C. ± .010

523 P.L.C. ± .010

524 P.L.C. ± .010

525 P.L.C. ± .010

526 P.L.C. ± .010

527 P.L.C. ± .010

528 P.L.C. ± .010

529 P.L.C. ± .010

530 P.L.C. ± .010

531 P.L.C. ± .010

532 P.L.C. ± .010

533 P.L.C. ± .010

534 P.L.C. ± .010

535 P.L.C. ± .010

536 P.L.C. ± .010

537 P.L.C. ± .010

538 P.L.C. ± .010

539 P.L.C. ± .010

540 P.L.C. ± .010

541 P.L.C. ± .010

542 P.L.C. ± .010

543 P.L.C. ± .010

544 P.L.C. ± .010

545 P.L.C. ± .010

546 P.L.C. ± .010

547 P.L.C. ± .010

548 P.L.C. ± .010

549 P.L.C. ± .010

550 P.L.C. ± .010

551 P.L.C. ± .010

552 P.L.C. ± .010

553 P.L.C. ± .010

554 P.L.C. ± .010

555 P.L.C. ± .010

556 P.L.C. ± .010

557 P.L.C. ± .010

558 P.L.C. ± .010

559 P.L.C. ± .010

560 P.L.C. ± .010

561 P.L.C. ± .010

562 P.L.C. ± .010

563 P.L.C. ± .010

564 P.L.C. ± .010

565 P.L.C. ± .010

566 P.L.C. ± .010

567 P.L.C. ± .010

568 P.L.C. ± .010

569 P.L.C. ± .010

570 P.L.C. ± .010

571 P.L.C. ± .010

572 P.L.C. ± .010

573 P.L.C. ± .010

574 P.L.C. ± .010

575 P.L.C. ± .010

576 P.L.C. ± .010

577 P.L.C. ± .010

578 P.L.C. ± .010

579 P.L.C. ± .010

580 P.L.C. ± .010

581 P.L.C. ± .010

582 P.L.C. ± .010

583 P.L.C. ± .010

584 P.L.C. ± .010

585 P.L.C. ± .010

586 P.L.C. ± .010

587 P.L.C. ± .010

588 P.L.C. ± .010

589 P.L.C. ± .010

590 P.L.C. ± .010

591 P.L.C. ± .010

592 P.L.C. ± .010

593 P.L.C. ± .010

594 P.L.C. ± .010

595 P.L.C. ± .010

596 P.L.C. ± .010

597 P.L.C. ± .010

598 P.L.C. ± .010

599 P.L.C. ± .010

600 P.L.C. ± .010

601 P.L.C. ± .010

602 P.L.C. ± .010

603 P.L.C. ± .010

604 P.L.C. ± .010

605 P.L.C. ± .010

606 P.L.C. ± .010

607 P.L.C. ± .010

608 P.L.C. ± .010

609 P.L.C. ± .010

610 P.L.C. ± .010

611 P.L.C. ± .010

612 P.L.C. ± .010

613 P.L.C. ± .010

614 P.L.C. ± .010

615 P.L.C. ± .010

616 P.L.C. ± .010

617 P.L.C. ± .010

618 P.L.C. ± .010

619 P.L.C. ± .010

620 P.L.C. ± .010

621 P.L.C. ± .010

622 P.L.C. ± .010

623 P.L.C. ± .010

624 P.L.C. ± .010

625 P.L.C. ± .010

626 P.L.C. ± .010

627 P.L.C. ± .010

628 P.L.C. ± .010

629 P.L.C. ± .010

630 P.L.C. ± .010

631 P.L.C. ± .010

632 P.L.C. ± .010

633 P.L.C. ± .010

634 P.L.C. ± .010

635 P.L.C. ± .010

636 P.L.C. ± .010

637 P.L.C. ± .010

638 P.L.C. ± .010

639 P.L.C. ± .010

640 P.L.C. ± .010

641 P.L.C. ± .010

642 P.L.C. ± .010

643 P.L.C. ± .010

644 P.L.C. ± .010

645 P.L.C. ± .010

646 P.L.C. ± .010

647 P.L.C. ± .010

648 P.L.C. ± .010

649 P.L.C. ± .010

650 P.L.C. ± .010

651 P.L.C. ± .010

652 P.L.C. ± .010

653 P.L.C. ± .010

654 P.L.C. ± .010

655 P.L.C. ± .010

656 P.L.C. ± .010

657 P.L.C. ± .010

658 P.L.C. ± .010

659 P.L.C. ± .010

660 P.L.C. ± .010

661 P.L.C. ± .010

662 P.L.C. ± .010

663 P.L.C. ± .010

664 P.L.C. ± .010

665 P.L.C. ± .010

666 P.L.C. ± .010

667 P.L.C. ± .010

668 P.L.C. ± .010

669 P.L.C. ± .010

670 P.L.C. ± .010

671 P.L.C. ± .010

672 P.L.C. ± .010

673 P.L.C. ± .010

674 P.L.C. ± .010

675 P.L.C. ± .010

676 P.L.C. ± .010

677 P.L.C. ± .010

678 P.L.C. ± .010

679 P.L.C. ± .010

680 P.L.C. ± .010

681 P.L.C. ± .010

682 P.L.C. ± .010

683 P.L.C. ± .010

684 P.L.C. ± .010

685 P.L.C. ± .010

686 P.L.C. ± .010

687 P.L.C. ± .010

688 P.L.C. ± .010

689 P.L.C. ± .010

690 P.L.C. ± .010

691 P.L.C. ± .010

692 P.L.C. ± .010

693 P.L.C. ± .010

694 P.L.C. ± .010

695 P.L.C. ± .010

696 P.L.C. ± .010

697 P.L.C. ± .010

698 P.L.C. ± .010

699 P.L.C. ± .010

700 P.L.C. ± .010

701 P.L.C. ± .010

702 P.L.C. ± .010

703 P.L.C. ± .010

704 P.L.C. ± .010

705 P.L.C. ± .010

706 P.L.C. ± .010

707 P.L.C. ± .010

708 P.L.C. ± .010

709 P.L.C. ± .010

710 P.L.C. ± .010

711 P.L.C. ± .010

712 P.L.C. ± .010

713 P.L.C. ± .010

714 P.L.C. ± .010

715 P.L.C. ± .010

716 P.L.C. ± .